



ARES  
INDUSTRIAL  
MANAGEMENT

AVAILABLE  
4 | Q  
2 0 2 5

# 421 MASON ROAD

LA VERGNE, TN, 37086

FOR LEASE | 42,641 & 79,789 SQ FT | Class A Warehouse Facility



**GRIFFIN FARRISS**

griffin.farriss@streamrealty.com  
561.676.2601

**BRADLEY WORTHINGTON**

bradley.worthington@streamrealty.com  
615.517.1386

**OWNED BY**



ARES  
INDUSTRIAL  
MANAGEMENT

# Property FEATURES

## BUILDING

- 32' Clear Height
- 64 Car Parking Spaces
- 54' X 50' Typical Column Spacing with 60' Speed Bay

## SUITE 100

- 79,789 SF
- Available December 2025
- 2,693 SF Office
- 11 Dock Doors with Mechanical Levelers and Dock Seals
- 1 Drive-In Door (12'x14')
- 13 Trailer Parking Stalls

## SUITE 300

- 42,641 SF
- Available February 2026
- 2,270 SF Office
- 7 Dock High Doors with Mechanical Levelers and Dock Seals
- 1 Drive-in Door (12' x 14')
- Secured Truck Court with 10 Trailer Parking Stalls



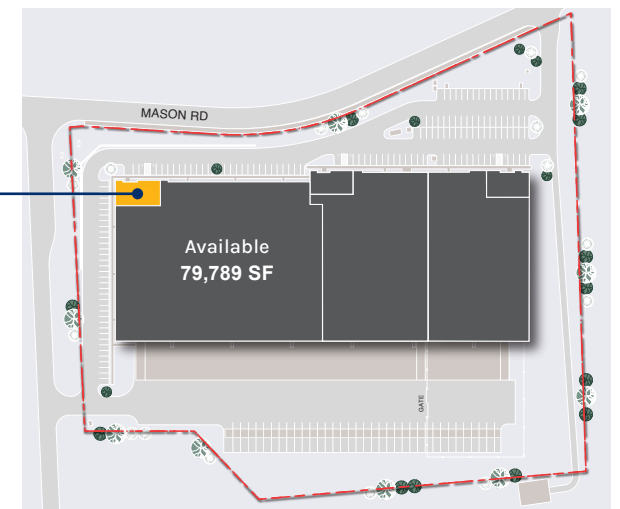
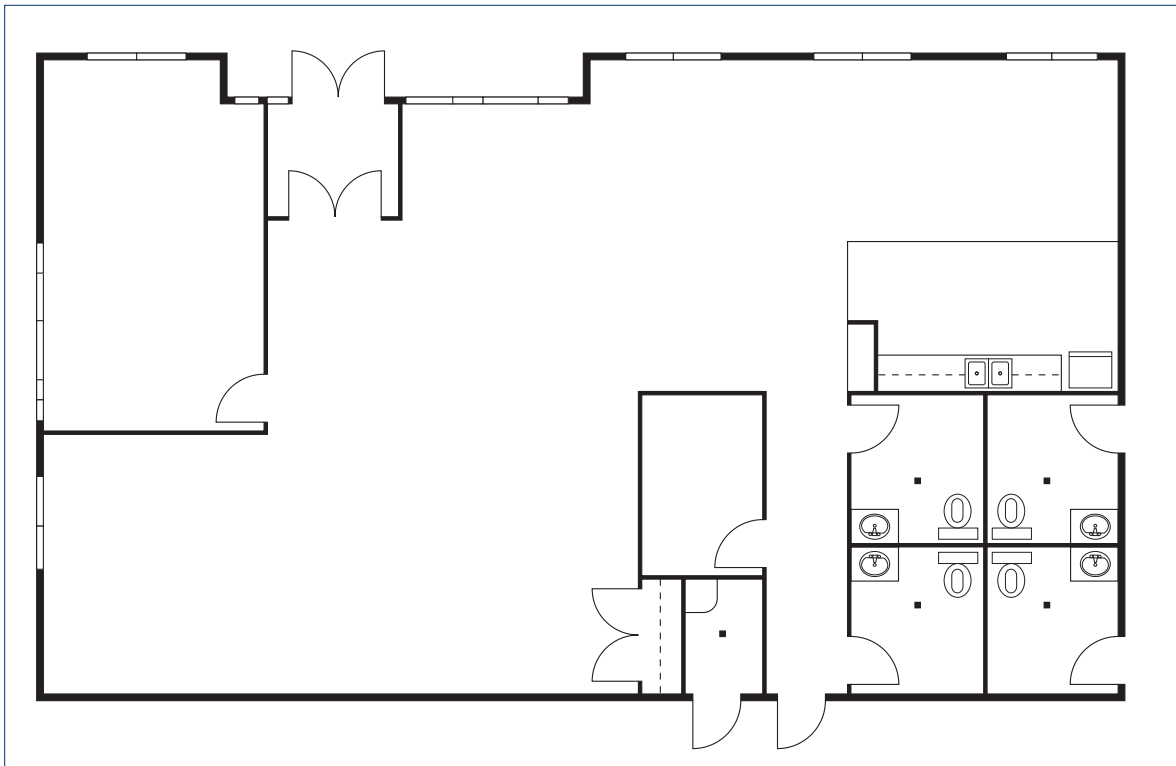
### LEGEND

- Office
- Warehouse
- △ Drive-In Doors

# Floor Plan

## SUITE 100 OFFICE

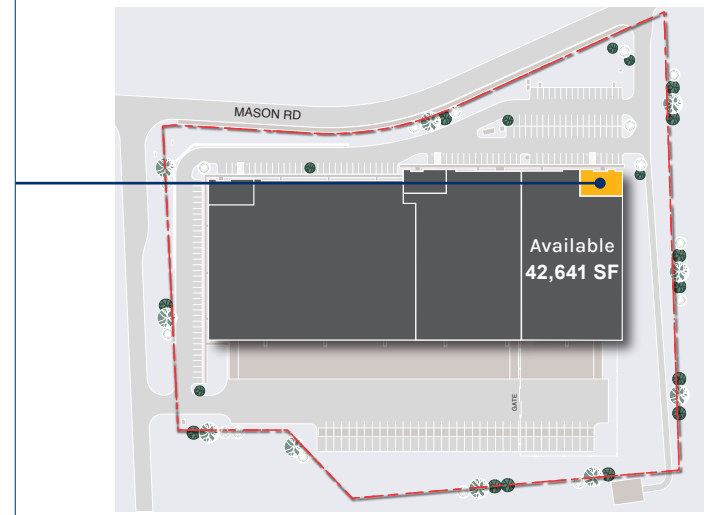
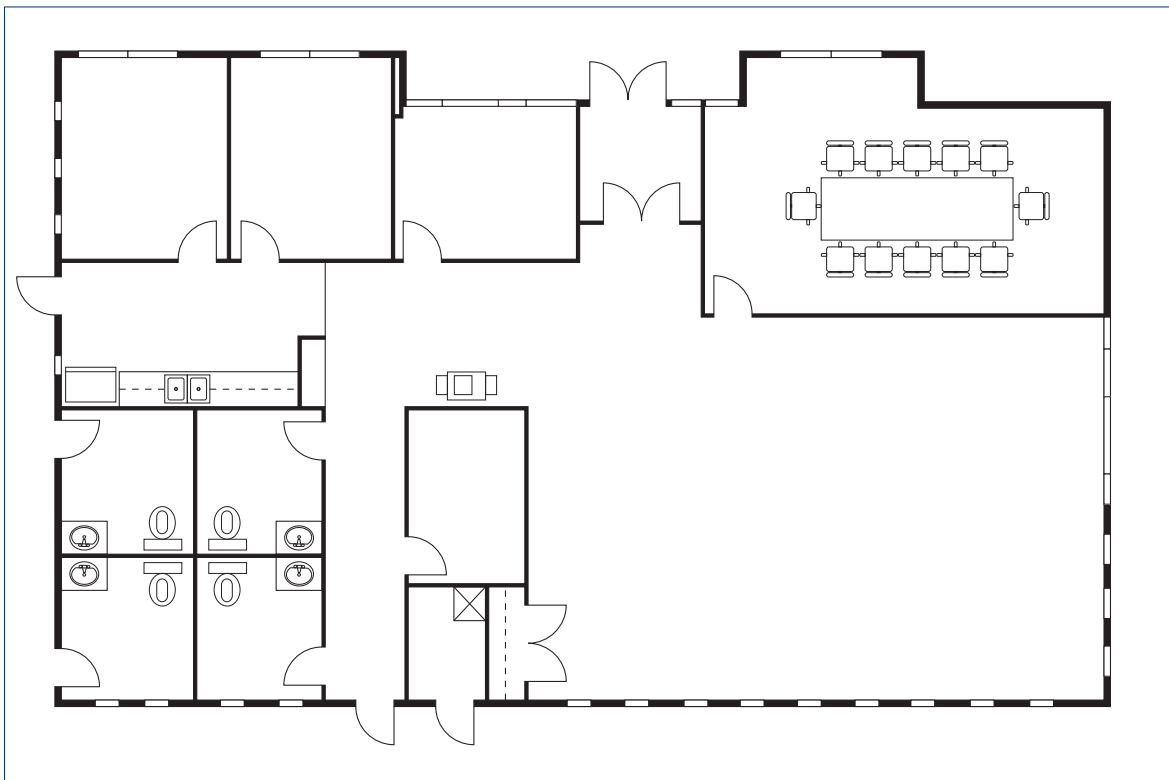
- 2,693 SF
- Available Dec 2025



# Floor Plan

## SUITE 300 OFFICE

- 2,270 SF
- Available Feb 2026



# Location HIGHLIGHTS

- 5 Minutes to I-24
- 20 Minutes to I-840
- 22 Minutes to Nashville International Airport (BNA)
- Corporate Neighbors include JB Hunt, Shorr Packaging, Amazon, Essendant, and Cardinal Health



ARES  
INDUSTRIAL  
MANAGEMENT

## ABOUT ARES MANAGEMENT CORPORATION

Ares Management Corporation (NYSE: ARES) is a leading global alternative investment manager offering clients complementary primary and secondary investment solutions across the credit, private equity, real estate and infrastructure asset classes. We seek to provide flexible capital to support businesses and create value for our stakeholders and within our communities. By collaborating across our investment groups, we aim to generate consistent and attractive investment returns throughout market cycles. For more information, please visit [www.aresmgmt.com](http://www.aresmgmt.com).



501 Commerce Street  
Suite 1120  
Nashville, TN 37203  
615.795.0000

**GRIFFIN FARRISS**

griffin.farriss@streamrealty.com  
561.676.2601

**BRADLEY WORTHINGTON**

bradley.worthington@streamrealty.com  
615.517.1386



**ARES  
INDUSTRIAL  
MANAGEMENT**