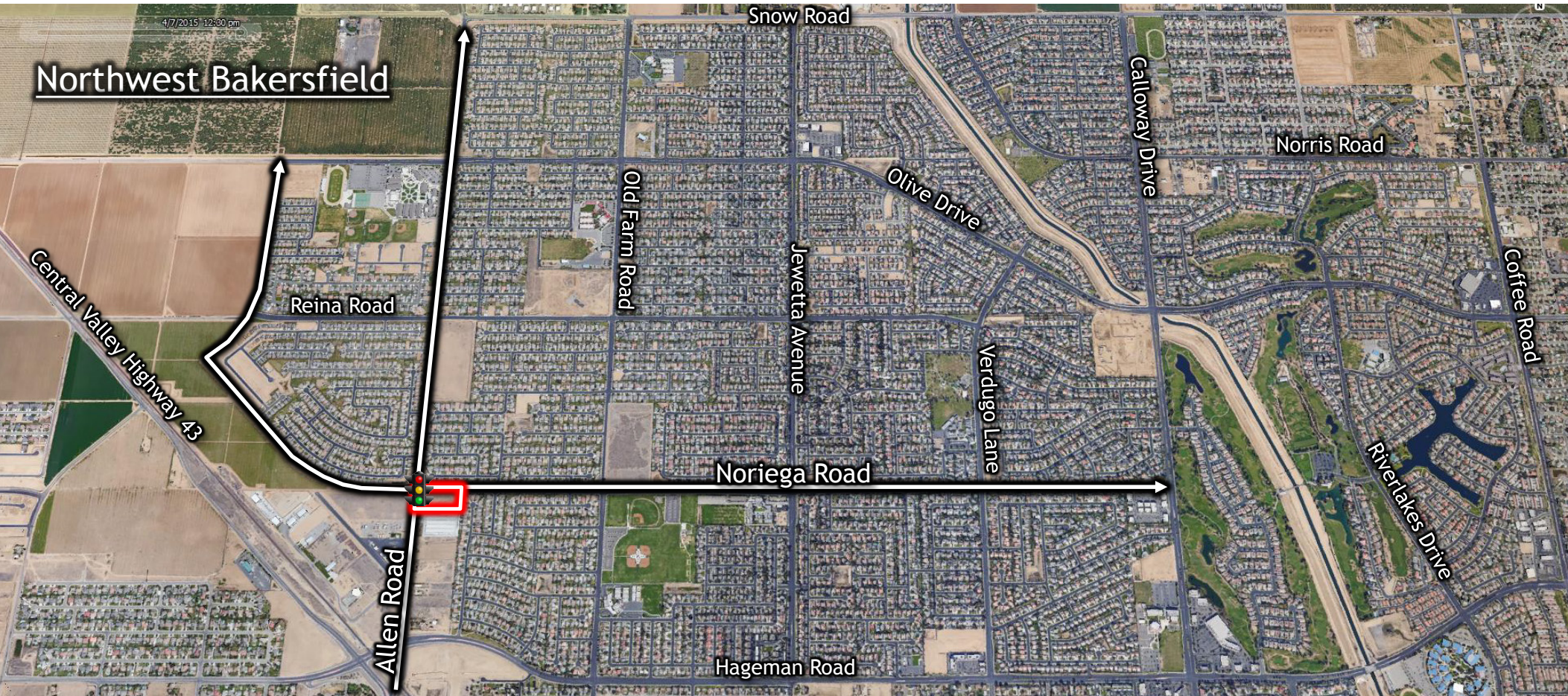




# Available

NW Bakersfield Retail Land  
4 Acres - Zoned C-2 PD  
Bakersfield, CA 93312



## Finished Shopping Center Land at Allen Road and Noriega Road SEC Allen Road & Noriega Road, Bakersfield, CA 93312

### Property Summary:

- Lot 1- 2.01 Net Acres (Sold), Lot 2- 1.95 Net Acres
- General Commercial (C-2 PD) zoning
- County of Kern Jurisdiction
- Signalized Intersection
- Sewer, Water, Cable, Telephone, Electric, Gas
- Streets, Curb, Gutter, Driveways and Sidewalk
- Project Reciprocal Access and Parking
- Approved Precise Development Plan
- Master Planned Project with CC&R
- Pylon and Shared Project Monument Signage

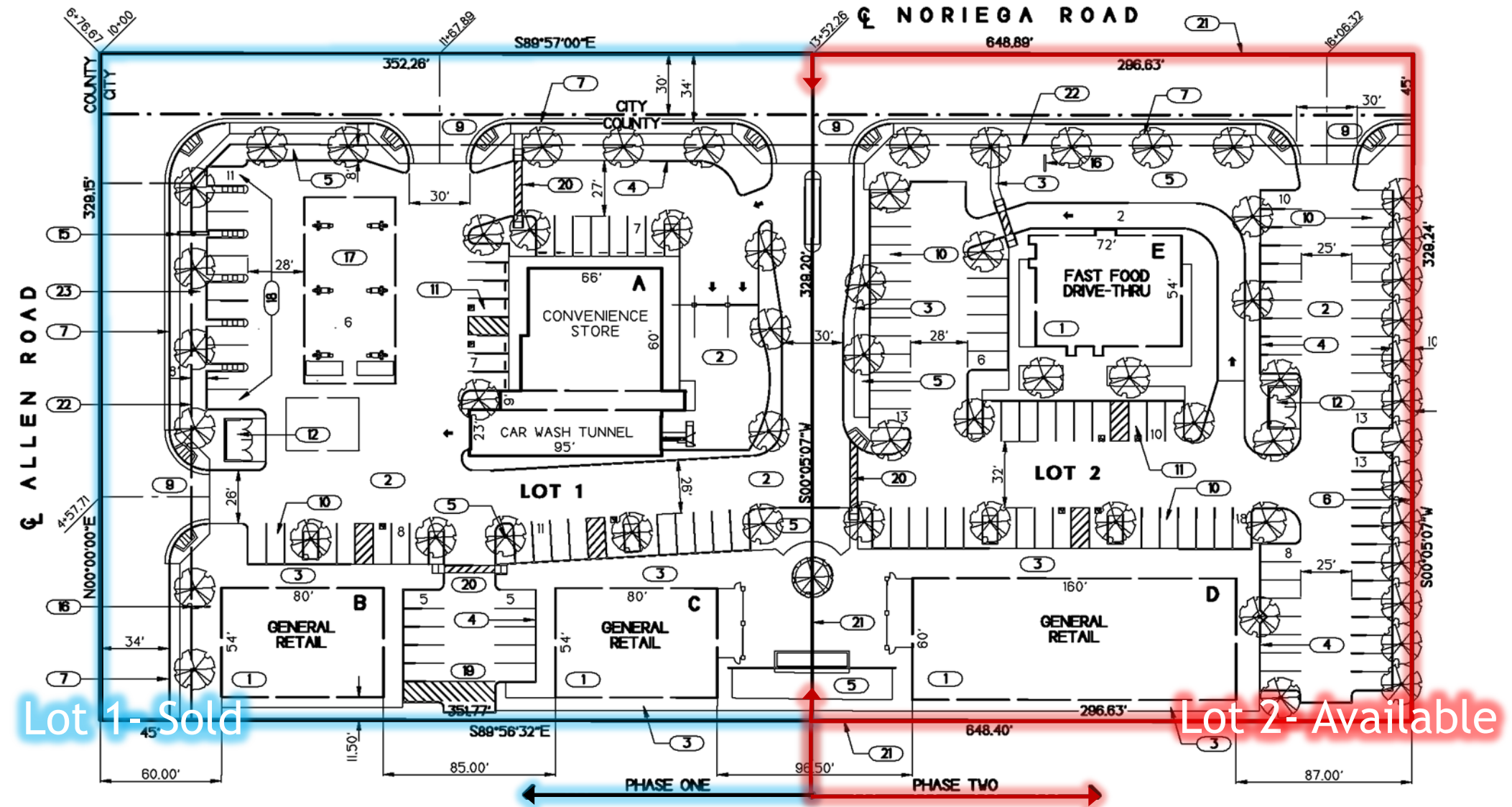
MACA Organization  
1925 G Street,  
Bakersfield, CA 93301  
[www.macaorg.com](http://www.macaorg.com)

NO WARRANTY OR REPRESENTATION, EXPRESS OR IMPLIED, IS MADE AS TO THE ACCURACY OF THE INFORMATION CONTAINED HEREIN, AND THE SAME IS SUBMITTED SUBJECT TO ERRORS, OMISSIONS, CHANGE OF PRICE, RENTAL OR OTHER CONDITIONS, PRIOR SALE, LEASE OR FINANCING, OR WITHDRAWAL WITHOUT NOTICE, AND OF ANY SPECIAL LISTING CONDITIONS IMPOSED BY OUR PRINCIPALS NO WARRANTIES OR REPRESENTATIONS ARE MADE AS TO THE CONDITION OF THE PROPERTY OR ANY HAZARDS CONTAINED THEREIN ARE ANY TO BE IMPLIED. CALBRE 01703264



# Available

NW Bakersfield Retail Land  
4 Acres - Zoned C-2 PD  
Bakersfield, CA 93312



For further information please contact:

**Mark K. Alexander**

President | Principal

Main: +1 661 474 6333 | Direct: +1 661 474 6330 | Email: [malexander@macaorg.com](mailto:malexander@macaorg.com)

MACA Organization

1925 G Street,

Bakersfield, CA 93301

[www.macaorg.com](http://www.macaorg.com)

NO WARRANTY OR REPRESENTATION, EXPRESS OR IMPLIED, IS MADE AS TO THE ACCURACY OF THE INFORMATION CONTAINED HEREIN, AND THE SAME IS SUBMITTED SUBJECT TO ERRORS, OMISSIONS, CHANGE OF PRICE, RENTAL OR OTHER CONDITIONS, PRIOR SALE, LEASE OR FINANCING, OR WITHDRAWAL WITHOUT NOTICE, AND OF ANY SPECIAL LISTING CONDITIONS IMPOSED BY OUR PRINCIPALS NO WARRANTIES OR REPRESENTATIONS ARE MADE AS TO THE CONDITION OF THE PROPERTY OR ANY HAZARDS CONTAINED THEREIN ARE ANY TO BE IMPLIED. CALBRE 01703264