

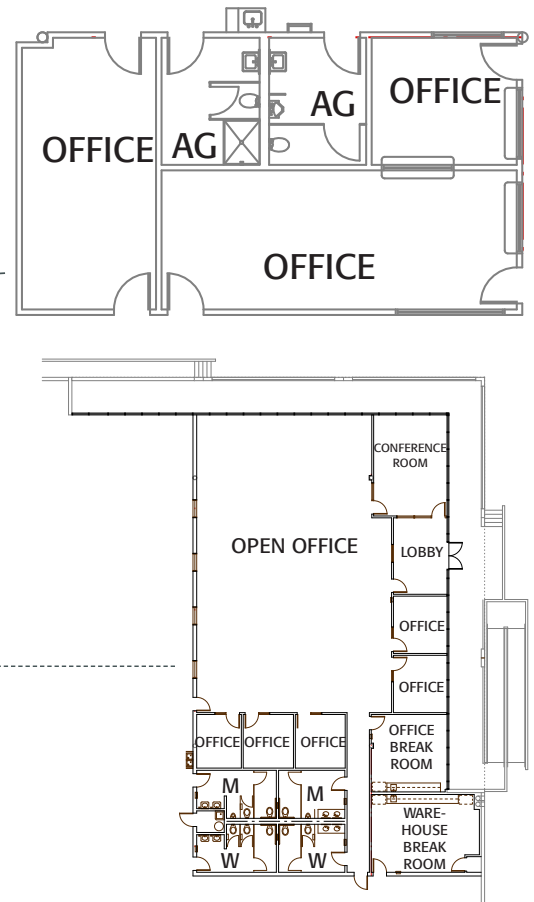
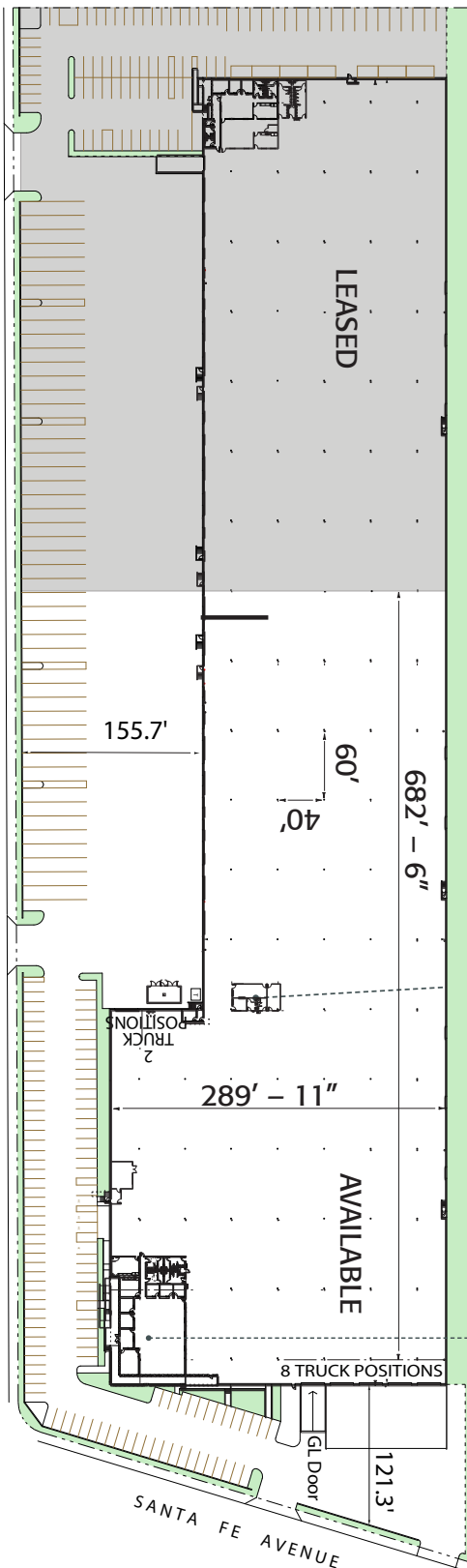
# 2751 E Dominguez St | ±168,952 SF

CARSON, CA

## FOR LEASE

### PROPERTY FEATURES

- Building Size: 168,952 SF
- ±6,016 SF of Office
- 27 Dock High Doors
- 1 Ground Level Doors
- 24' Clear Height
- 600 Amps, 480/277 volts (expandable to 4,000 Amps)
- ESRF K-17 @ 35 PSI
- LED Lighting
- 103 Parking Spaces
- 20 Trailer Positions
- New Concrete Yards
- Close Proximity to 405, 91 and 110 Freeways



OWNED AND OPERATED BY:

**EASTGROUP**  
PROPERTIES

[www.eastgroup.net](http://www.eastgroup.net)

For more information, please contact:

**BRET QUINLAN**  
LIC. 01144338  
310 363 4962  
[bret.quinlan@cbre.com](mailto:bret.quinlan@cbre.com)

**JAMES HOOKS**  
LIC. 01813302  
310 897 1789  
[james.hooks@cbre.com](mailto:james.hooks@cbre.com)

**JENNY EDWARDS**  
LIC. 02217120  
310 745 7506  
[jenny.edwards@cbre.com](mailto:jenny.edwards@cbre.com)

**CBRE**

© 2025 CBRE, Inc. All rights reserved. This information has been obtained from sources believed reliable but has not been verified for accuracy or completeness. CBRE, Inc. makes no guarantee, representation or warranty and accepts no responsibility or liability as to the accuracy, completeness, or reliability of the information contained herein. You should conduct a careful, independent investigation of the property and verify all information. Any reliance on this information is solely at your own risk. CBRE and the CBRE logo are service marks of CBRE, Inc. All other marks displayed on this document are the property of their respective owners, and the use of such marks does not imply any affiliation with or endorsement of CBRE. Photos herein are the property of their respective owners. Use of these images without the express written consent of the owner is prohibited.