

ALBERT HOUSE

Quay Place, 92 Edward St, Birmingham B1 2RA



**FULLY FITTED, CITY CENTRE, CANALSIDE OFFICE SPACE
from 3,600 – 8,640 SQ FT TO LET**



DESCRIPTION

Albert House is situated in Birmingham City Centre, adjacent to the National Indoor Arena and Brindleyplace mixed use scheme. With easy road links to Birmingham's ring road and onwards to the M6, M5 and M42 motorways. A 10 minute walk from Birmingham New Street, Snowhill and Five Ways Train Stations.

Albert House comprises a 3 storey office building and within this building the 1st or 2nd floors are currently available to let. The suite is fully fitted to include kitchens, meeting rooms and furniture. See next page for specification and terms.

ACCOMMODATION

Floor	Sq Ft	Sq Mt
2nd	8,640	803
1st	3,600	334



CONTACT US

LIZ BAILEY

ASSOCIATE DIRECTOR
+44 121 616 5596
+44 7572 532 717
liz.bailey@cbre.com

ALBERT HOUSE

Quay Place, 92 Edward St, Birmingham B1 2RA



Specification

The specification includes:

- Suspended ceilings
- Recessed Lighting
- Air conditioning
- Carpet covered raised access floors
- Window blinds
- Desks and chairs for c 80 staff
- Cabling
- Reception
- Kitchen
- Male and Female toilets
- 17 Car Parking Spaces



Terms

Rent

£17.50 psf

Service Charge

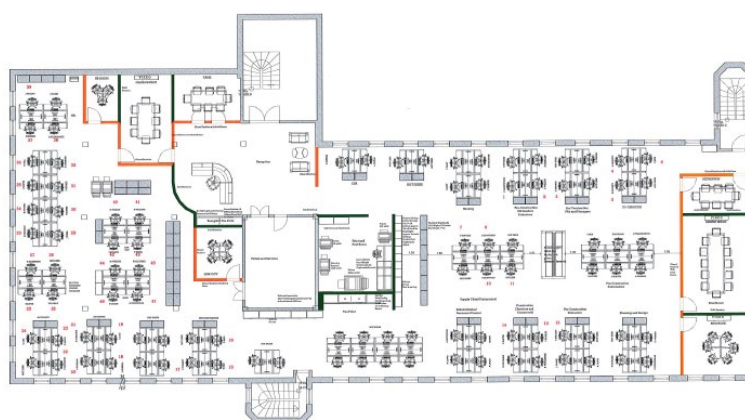
£TBC

Rates

The in-going tenant will be responsible for the payment of Local Authority rates.

Lease Terms

Available as a flexible sublease until July 2021.



Second Floor Layout

© July 2019 CBRE, Inc. This information has been obtained from sources believed reliable. We have not verified it and make no guarantee, warranty or representation about it. Any projections, opinions, assumptions or estimates used are for example only and do not represent the current or future performance of the property. You and your advisors should conduct a careful, independent investigation of the property to determine to your satisfaction the suitability of the property for your needs.

Photos herein are the property of their respective owners and use of these images without the express written consent of the owner is prohibited.