

REMAINDER
LOT 109

MAINTAINED
RIGHT-OF-WAY LINE
PER MB 4, PAGES
223-228.

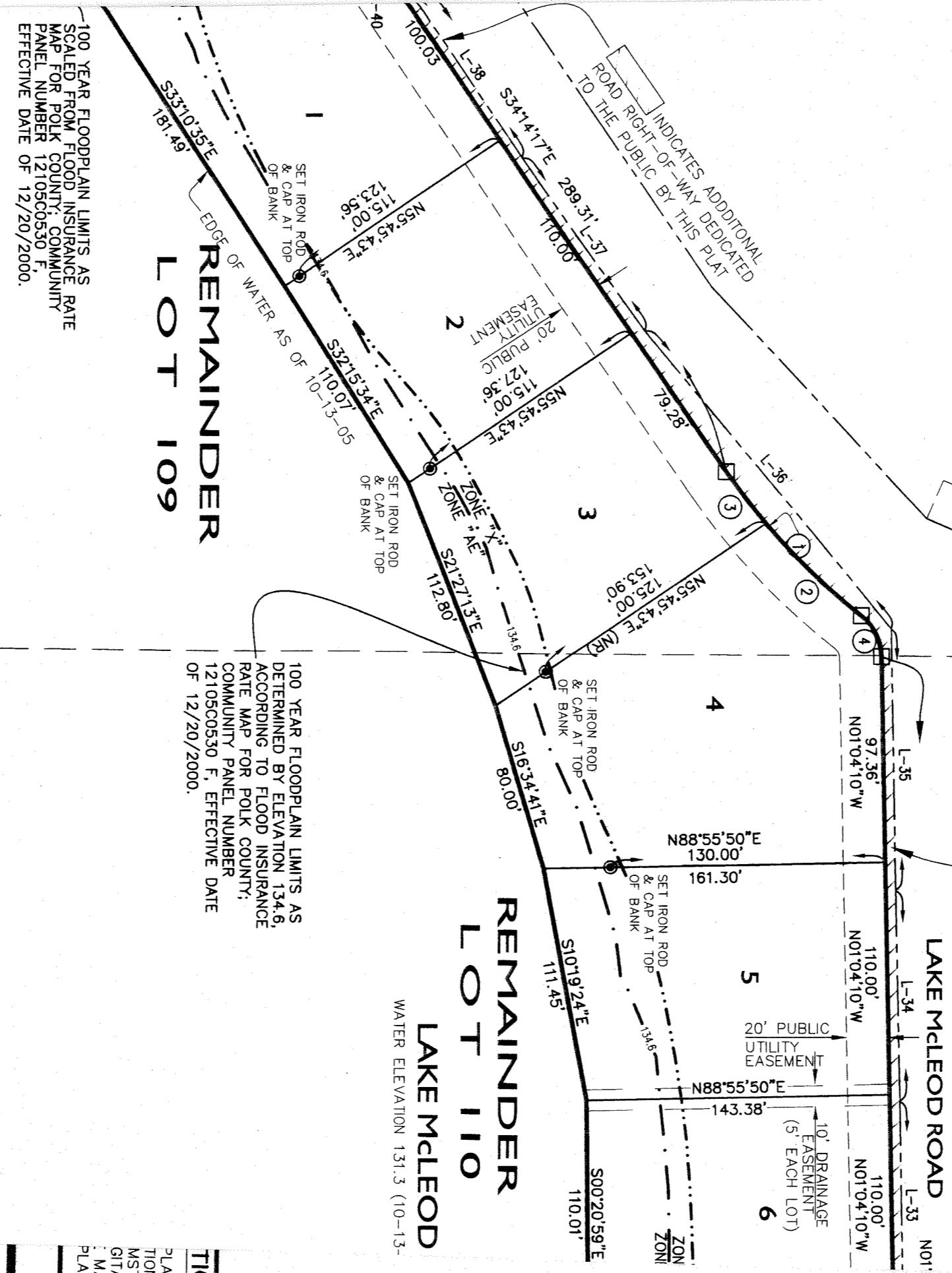
EAGLE LAK

MAINTAINED RIGHT-OF-WAY
LINE PER MB 4, PAGES
223-228.

REMAINDER
LOT 110

20'X20' PUBLIC UTILITY
EASEMENT
(O.R. 5544, PAGE 348)

INDICATES ADDITIONAL
ROAD RIGHT-OF-WAY DEDICATED
TO THE PUBLIC BY THIS PLAT



100 YEAR FLOODPLAIN LIMITS AS
SCALED FROM FLOOD INSURANCE RATE
MAP FOR POLK COUNTY, COMMUNITY
PANEL NUMBER 12105C0530 F,
EFFECTIVE DATE OF 12/20/2000.

100 YEAR FLOODPLAIN LIMITS AS
DETERMINED BY ELEVATION 134.6,
ACCORDING TO FLOOD INSURANCE
RATE MAP FOR POLK COUNTY;
COMMUNITY PANEL NUMBER
12105C0530 F, EFFECTIVE DATE
OF 12/20/2000.

TICE:
PLAT, AS RE
TION OF THE
MSTANCES B
GITAL FORM
MAY BE AC
PLAT THAT N