

FOR SALE OR LEASE

# OFFICE BUILDING

1803 W. MARCH LANE STOCKTON, CA

**PRICE: \$1,186,835**  
**RATE: \$1.15 MG PSF**

## AMENITIES:

- + Situated along West March Lane, Stockton's primary office corridor
- + Close proximity to many restaurants, retail, banking and other professional businesses
- + Near San Joaquin Delta College and University of the Pacific
- + Located along public transportation route
- + Convenient access to Interstate 5 via West March Ln



## CONTACT US

### BRIAN PETERSON

Senior Vice President  
Lic. 01718738  
+1 209 476 2907  
brian.peterson@cbre.com

### STEVE WHITE

Vice President  
Lic. 01781200  
+1 209 476 2906  
steve.white@cbre.com

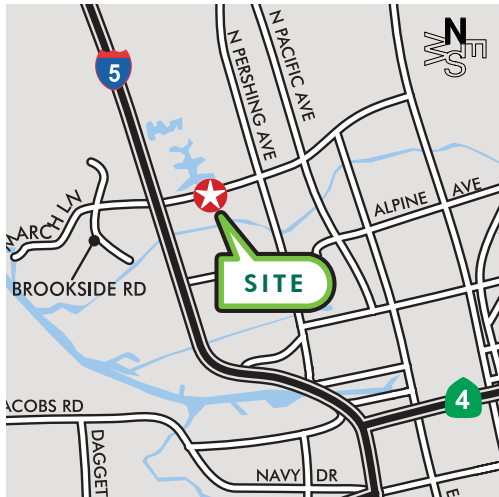
CBRE  
3247 W March Ln,  
Suite 100  
Stockton, CA 95219  
+1 209 473 7800

[www.cbre.us/cacentralvalley](http://www.cbre.us/cacentralvalley)

**CBRE**

## OFFICE BUILDING FOR SALE OR LEASE

# 1803 W. MARCH LANE STOCKTON, CA



**TOTAL BUILDING: ±12,493 SF**

**TOTAL AVAILABLE: ±6,590 RSF**

- + Suite A: ±1,472 SF
- + Suite G: ±1,240 SF
- + Suite H: ±1,468 SF
- + Suite M&N: ±2,410 SF

(Tenant shall pay utilities and janitorial)

### TENANT MIX

- + Adleberg Associates Medical Group
- + Turning Point Community Programs



©2019 CBRE, Inc. CBRE and the CBRE logo are service marks of CBRE, Inc. and/or its affiliated or related companies in the United States and other countries. We obtained the information herein from sources we believe to be reliable. However, we have not verified its accuracy and make no guarantee, warranty or representation about it. It is submitted subject to the possibility of errors, omissions, change of price, rental or other conditions, prior sale, lease or financing, or withdrawal without notice. We include projections, opinions, assumptions or estimates for example only, and they may not represent current or future performance of the property. You and your tax and legal advisors should conduct your own investigation of the property and transaction.

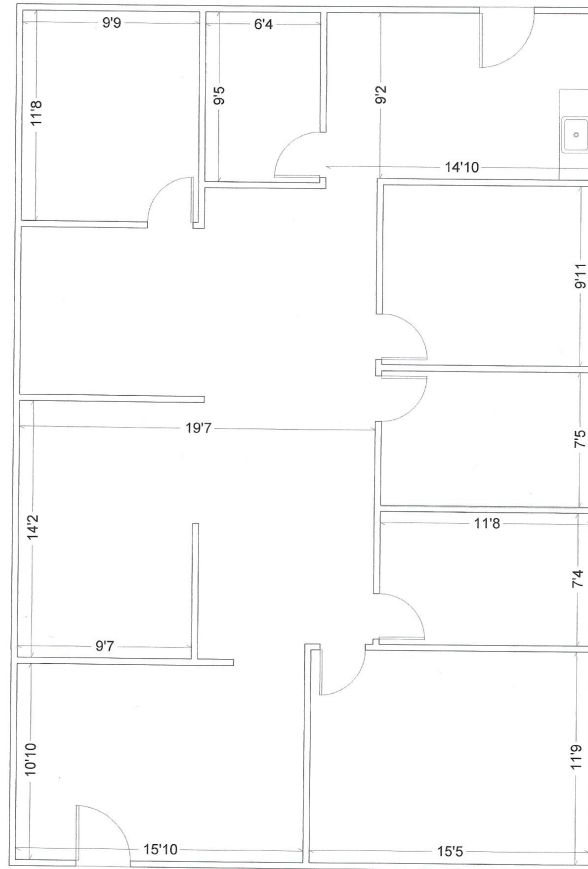
Photos herein are the property of their respective owners and use of these images without the express written consent of the owner is prohibited. 80923157-11164

OFFICE BUILDING FOR SALE OR LEASE

# 1803 W. MARCH LANE STOCKTON, CA



## AVAILABLE SPACE FLOOR PLANS



**SUITE A**  
**±1,472 SF**

[www.cbre.us/cacentralvalley](http://www.cbre.us/cacentralvalley)

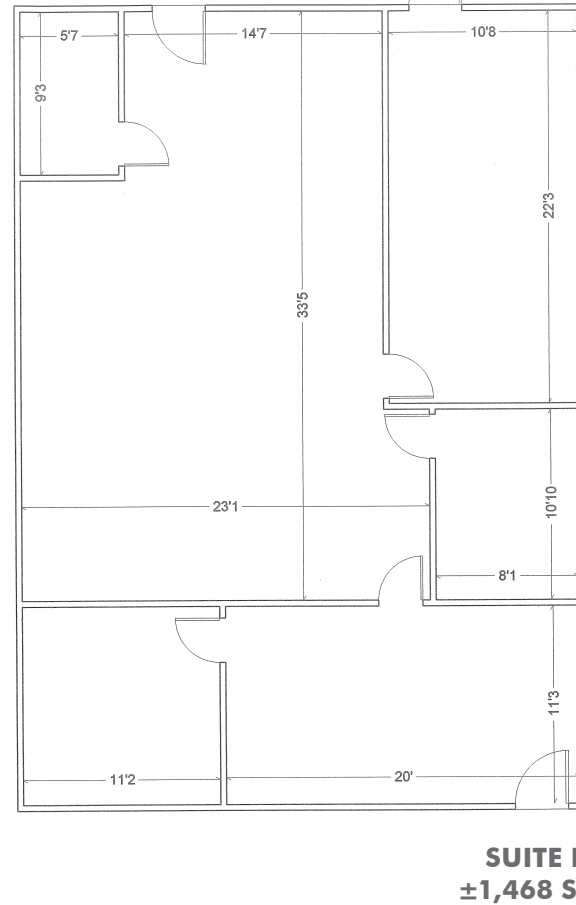
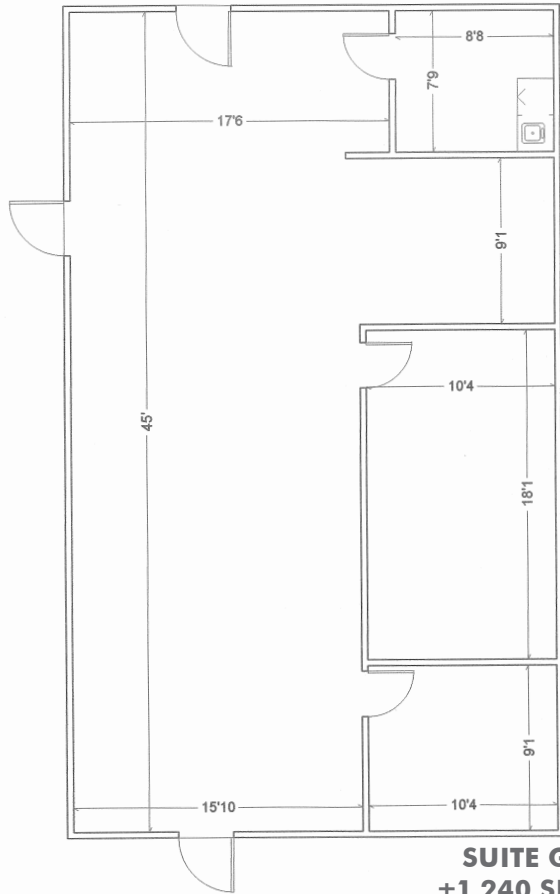
**CBRE**

OFFICE BUILDING FOR SALE OR LEASE

# 1803 W. MARCH LANE STOCKTON, CA



## AVAILABLE SPACE FLOOR PLANS



[www.cbre.us/cacentralvalley](http://www.cbre.us/cacentralvalley)

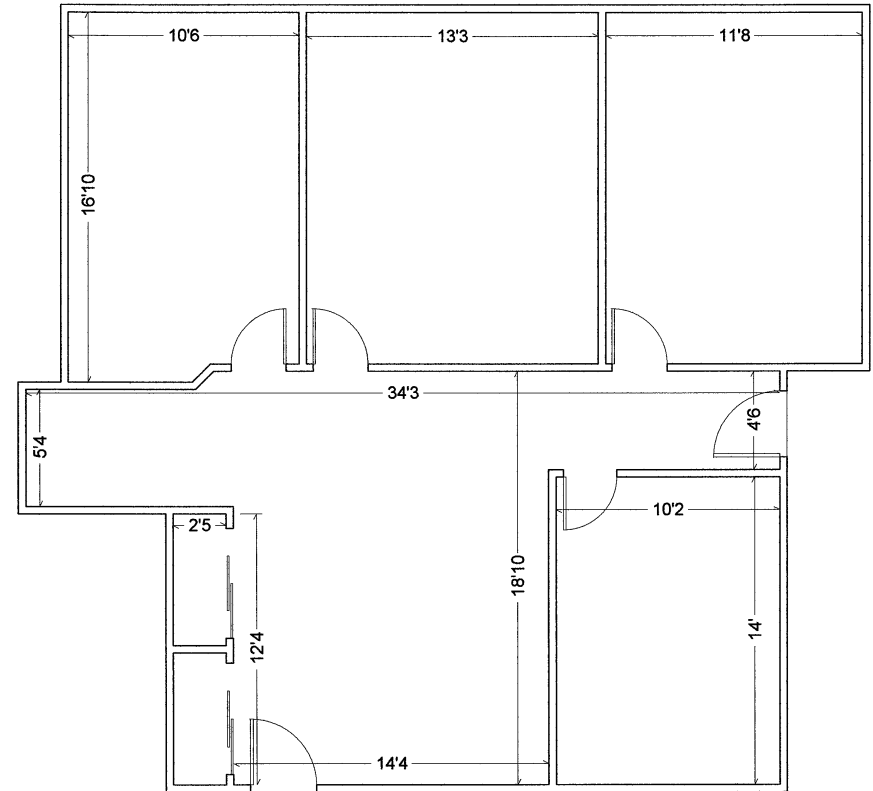
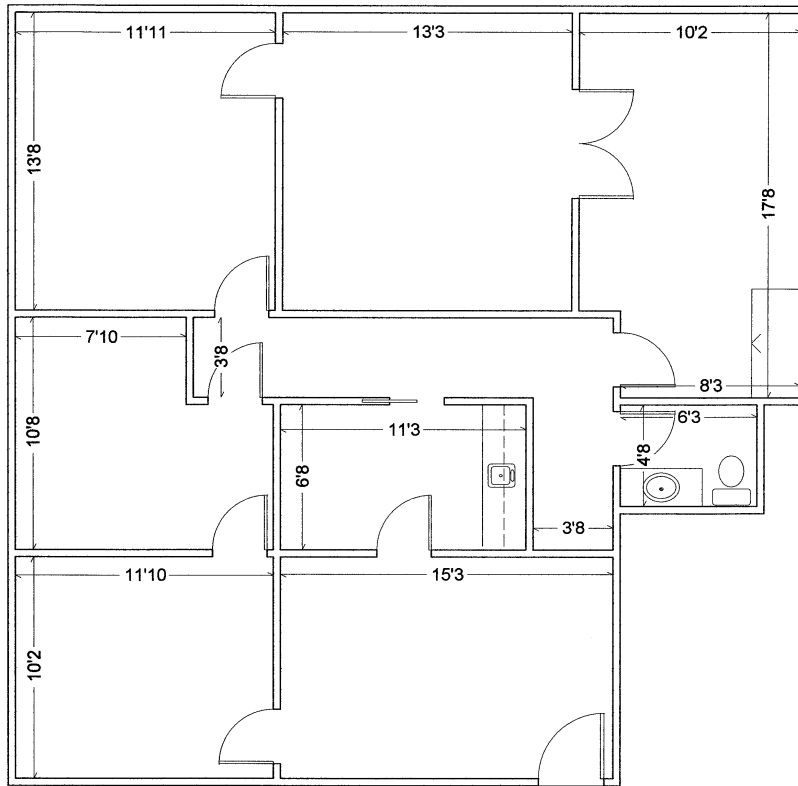
**CBRE**

OFFICE BUILDING FOR SALE OR LEASE

# 1803 W. MARCH LANE STOCKTON, CA



## AVAILABLE SPACE FLOOR PLANS



**SUITES M & N**  
**±2,410 SF**

# OFFICE BUILDING FOR SALE OR LEASE 1803 W. MARCH LANE STOCKTON, CA



[www.cbre.us/cacentralvalley](http://www.cbre.us/cacentralvalley)

**CBRE**

**For additional information, please visit:**  
**[www.cbre.us/cacentralvalley](http://www.cbre.us/cacentralvalley)**

**BRIAN PETERSON**

Senior Vice President  
Lic. 01718738  
+1 209 476 2907  
[brian.peterson@cbre.com](mailto:brian.peterson@cbre.com)

**STEVE WHITE**

Vice President  
Lic. 01781200  
+1 209 476 2906  
[steve.white@cbre.com](mailto:steve.white@cbre.com)

3247 W. March Lane, Suite 100  
Stockton, CA 95219