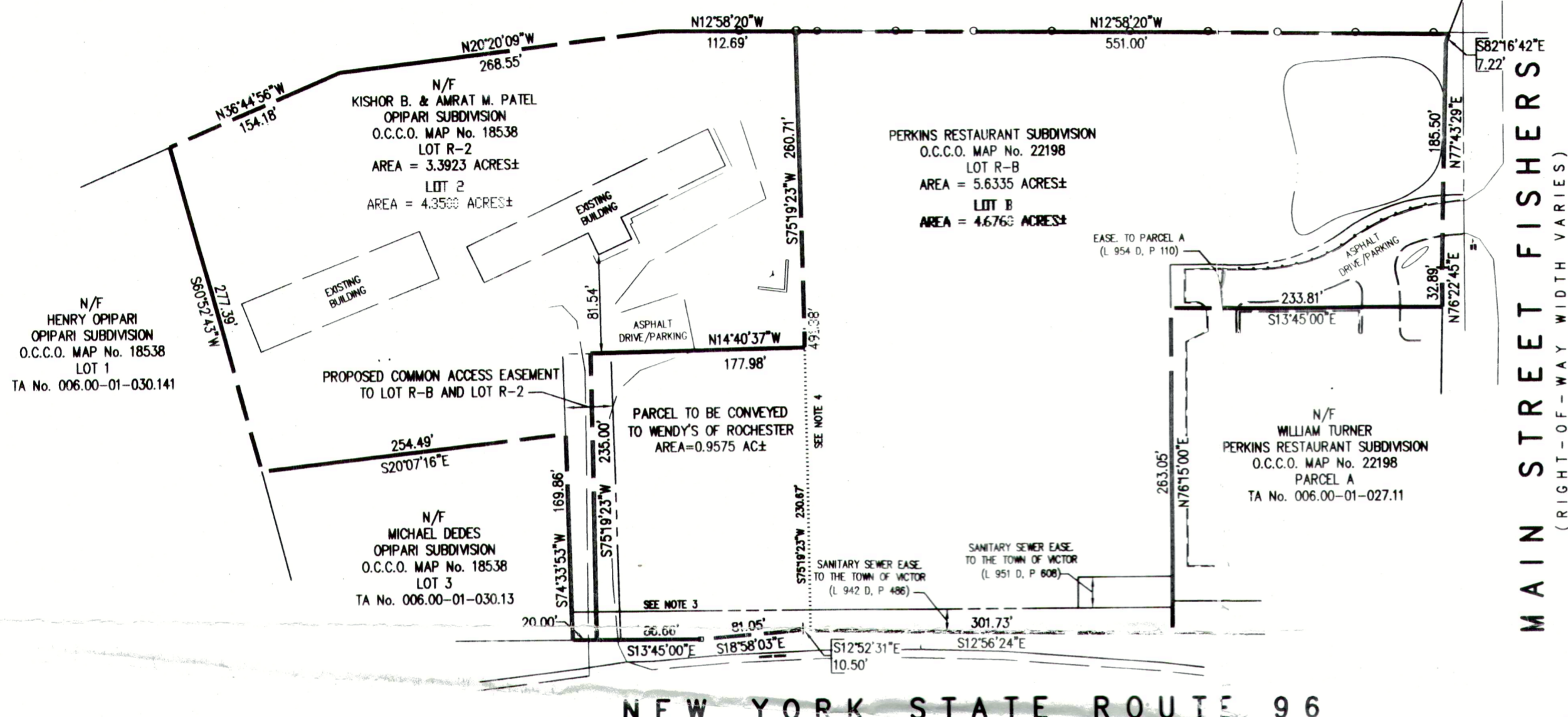
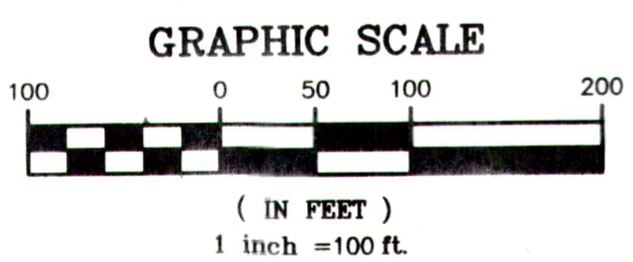


N/F
HIGH TECH FACILITIES GROUP
O.C.C.O. MAP No. 12322
TA No. 006.00-01-023.131



MAIN STREET FISHERS
(RIGHT-OF-WAY WIDTH VARIES)

NEW YORK STATE ROUTE 96



LEGEND

	BOUNDARY LINE
	CENTERLINE
	EXISTING EASEMENT LINE
	PROPOSED EASEMENT LINE
	ADJOINER LINE
	EXISTING CHAIN LINK FENCE
	ORIGINAL LINE/DATA

APPROVALS

BY: _____ DATE: _____
OWNER (WENDY'S OF ROCHESTER)

BY: _____ DATE: _____
OWNER (KISHOR B. & AMRAT PATEL)

BY: _____ DATE: _____
TOWN OF VICTOR BUILDING DEPARTMENT

REFERENCES:

1. A PLAN ENTITLED "MAP OF LANDS OF MIRIAM B. PHILLIPS, PREPARED BY ANDERSON-ROBARTES AND FILED IN THE ONTARIO COUNTY CLERK'S OFFICE AT MAP NO. 4367.
2. A PLAN ENTITLED "LANDS OF THE ESTATE OF MIRIAM PHILLIPS," PREPARED BY PAUL CRANDALL AND FILED IN THE ONTARIO COUNTY CLERK'S OFFICE AT MAP NO. 11762.
3. A PLAN ENTITLED "REDCOM CORPORATE FACILITIES SUBDIVISION PLAN," PREPARED BY SEAR-BROWN ASSOCIATES, AND FILED IN THE ONTARIO COUNTY CLERK'S OFFICE AT MAP NO. 12322.
4. A PLAN ENTITLED "OPIPARI SUBDIVISION," PREPARED BY WARREN MCGRAIL AND FILED IN THE ONTARIO COUNTY CLERK'S OFFICE AT MAP NO. 18538.
5. A PLAN ENTITLED "SUBDIVISION PLAT, LANDS OF THE ESTATE OF MIRIAM B. PHILLIPS," PREPARED BY BRITE ASSOCIATES AND FILED IN THE ONTARIO COUNTY CLERK'S OFFICE AT MAP NO. 19731.
6. A PLAN ENTITLED "BALLANTYNE SUBDIVISION," PREPARED BY MRB GROUP AND FILED IN THE ONTARIO COUNTY CLERK'S OFFICE AT MAP NO. 20638.
7. A PLAN ENTITLED "PERKINS RESTAURANT, SUBDIVISION PLAN," AS FILED IN THE ONTARIO COUNTY CLERK'S OFFICE AT MAP NO. 22198.
8. A SET OF PLANS FOR HIGHWAY ACQUISITION AS FILED IN THE ONTARIO COUNTY CLERK'S OFFICE, BEING MAP No. 37, PARCELS 42 & 43.
9. A SET OF PLANS FOR HIGHWAY ACQUISITION AS FILED IN THE ONTARIO COUNTY CLERK'S OFFICE, BEING MAP No. 38, PARCELS 44 & 45.
10. A SET OF PLANS FOR HIGHWAY ACQUISITION AS FILED IN THE ONTARIO COUNTY CLERK'S OFFICE, BEING MAP No. 39, PARCELS 46.
11. A PLAN ENTITLED "WENDY'S OF ROCHESTER, ALTA/ACSM LAND TITLE SURVEY OF PARCEL "B" OF THE PERKINS SUBDIVISION," PREPARED BY BME ASSOCIATES, DRAWING No. 0904-161.
12. AN ABSTRACT OF TITLE PREPARED BY MONROE TITLE INSURANCE CORPORATION, ABSTRACT NO. 16717, DATED FEBRUARY 10, 1998 FOR THE SURVEY MAPPED IN REFERENCE 11.
13. AN ABSTRACT OF TITLE FOR THE PROPERTY SHOWN HEREON WAS NOT PROVIDED FOR THE COMPLETION OF THIS SURVEY.

NOTES:

1. UNDERGROUND UTILITIES SHOWN WERE PLOTTED FROM RECORD MAP INFORMATION OR OBSERVED ABOVE GROUND EVIDENCE, THEREFOR SAID UTILITIES ARE NOT CERTIFIED TO HEREON.
2. THE BEARING BASE SHOWN HEREON WAS TAKEN FROM THE PLAN NOTED IN REFERENCE 3.
3. PARCEL MAY BE SUBJECT TO AN EASEMENT TO THE TOWN OF VICTOR PER REFERENCE NO. 10.
4. PARCEL MAY BE SUBJECT TO AN UTILITY EASEMENT ALONG THE EXISTING POLELINE.

WE, BME ASSOCIATES, CERTIFY THAT THIS MAP WAS PREPARED FROM THE NOTES OF AN INSTRUMENT SURVEY COMPLETED BY US ON MARCH 28, 2003 AND FROM THE REFERENCES NOTED HEREON.

THIS MAP IS SUBJECT TO ANY FACTS THAT MAY BE REVEALED BY SOURCES OTHER THAN THOSE NOTED HEREON.

BY: DATE: 9/30/03
DAVID N. ZACHARIAS, NYSPLS No. 49940

PHELPS & GORHAM PURCHASE, TOWNSHIP 11, RANGE 4, TOWN LOTS 25, 42 TAX MAP Nos. 006.00-01-062 AND 006.00-01-031.111

DRAWING NO.	02
PROJECT NO.	2095
SCALE	1"=100'
DATE ISSUED	SEPTEMBER 2003
PROJECT MANAGER	DN ZACHARIAS
PROJECT SUPERVISOR	DN ZACHARIAS
DRAWN BY	GD BELL

PROJECT	WENDY'S OF ROCHESTER - VICTOR
LOCATION	TOWN OF VICTOR, ONTARIO COUNTY, NEW YORK
CLIENT	WENDY'S OF ROCHESTER 20 NORTH UNION TOWN OF VICTOR, ONTARIO COUNTY, NEW YORK
DRAWING TITLE	RESUBDIVISION OF PERKINS RESTAURANT SUB., LOT B & RESUBDIVISION OF OPIPARI SUB., LOT 2



BME ASSOCIATES

ENGINEERS, SURVEYORS, PLANNERS
LANDSCAPE ARCHITECTS

10 LIFT BRIDGE LANE EAST
FAIRPORT, NEW YORK 14450
585-377-7360
FAX 585-377-7309

NO.	REVISIONS	DATE	BY
7			
6			
5			
4			
3			
2			
1			

Drawing Attention
The following is an excerpt from the New York State Education Law Article 145 Section 7209 and applies to this drawing:
It is a violation of this law for any person who is not a duly licensed professional engineer or land surveyor to offer any plan in any way, if on them bearing the seal of an engineer or land surveyor is placed, the starting engineer or land surveyor's name, or the name of the firm and the notation "prepared by" followed by his signature and the date of such alteration, and a specific description of the alteration.