



For Lease

Downtown Office Space

Laura Nesmith

Senior Associate
+1 603 860 9359
laura.nesmith@colliers.com

Doug Martin

Vice President
+1 603 493 8784
doug.martin@colliers.com



175 Canal Street, Suite 401
Manchester, NH 03101
+1 603 623 0100
colliersnh.com

15 Capitol Street Concord, NH

Property Highlights

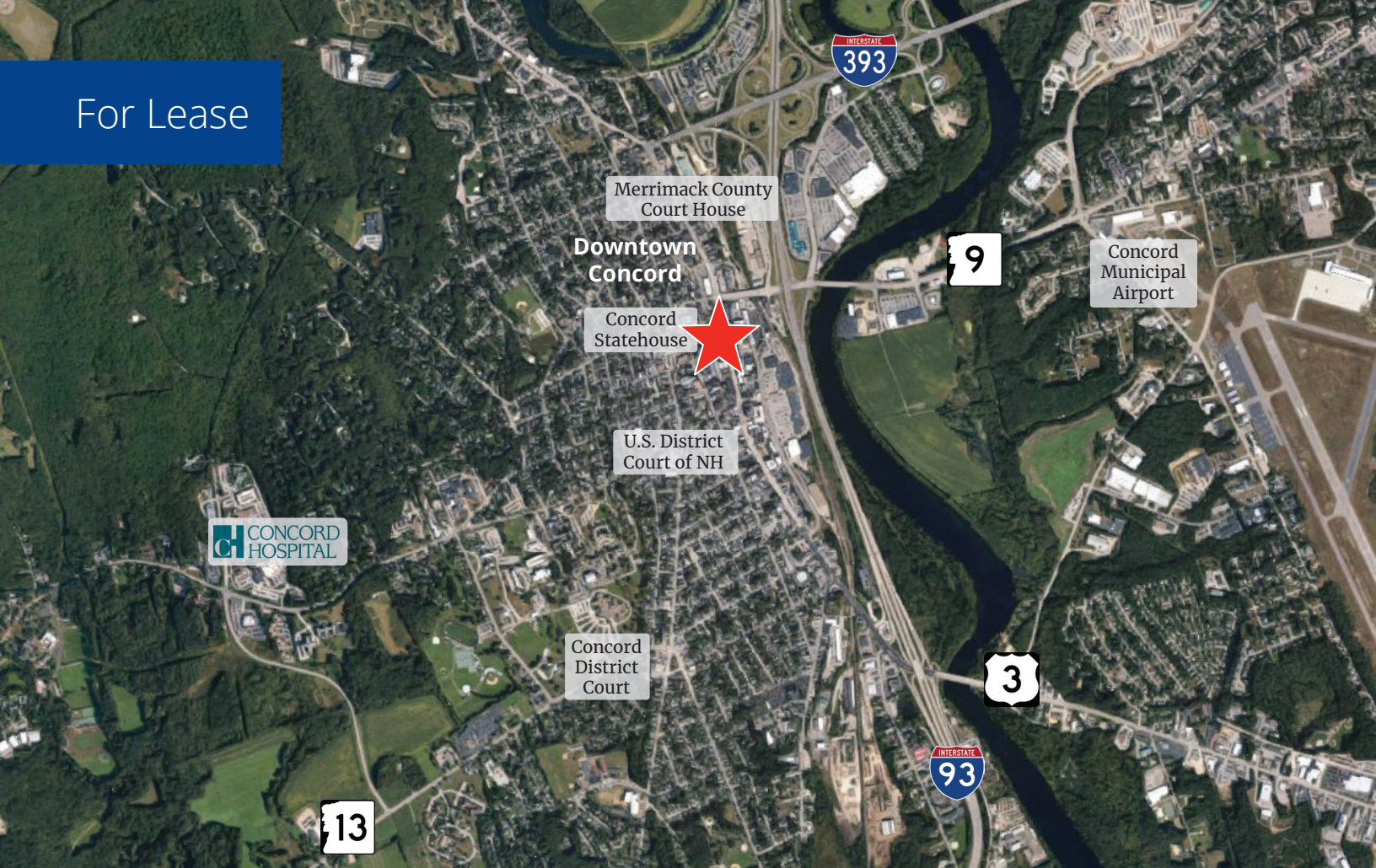
- 2,500± to 5,873± SF available for lease in a 3-story office building
- Located on the 1st floor and consisting of 7 private offices and 2 conference rooms (or 9 offices), open cubicle areas, a kitchen, 2 private restrooms, and a file room; existing furniture is negotiable
- On-street metered parking and the landlord will provide 6 permitted spaces in the nearby School Street Public Parking Garage
- Ideal for non-profits and lobbying groups seeking proximity to state government
- Within walking distance to local shops, restaurants, entertainment, and more

Rent incentive: 3 months free with a 5-year lease*

**Offer good thru 8/31/26.*

Information herein has been obtained from sources deemed reliable, however its accuracy cannot be guaranteed by Colliers International | New Hampshire & Maine. The user is required to conduct their own due diligence and verification. Colliers International | New Hampshire & Maine is independently owned and operated.

For Lease



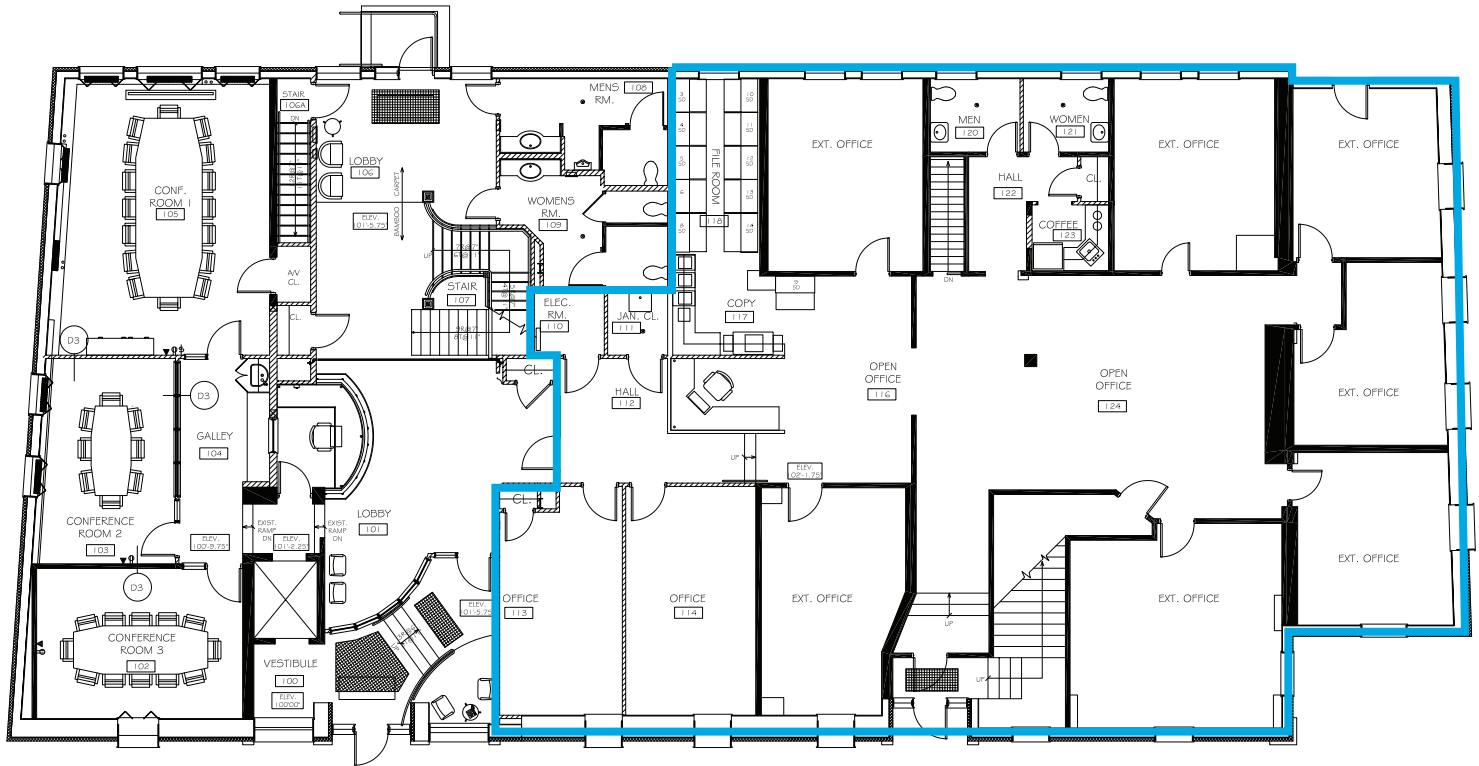
Specifications

Address:	15 Capitol Street
Location:	Concord, NH 03301
Building Type:	Office
Year Built:	1931
Total Building SF:	23,376±
Available SF:	2,500± to 5,873±
Floors:	3
Utilities:	Municipal water & sewer Natural gas
Zoning:	Central Business Performance District (CBP)
Parking:	Metered on-street & 6 permitted spaces in the School Street Parking Garage
Elevator:	Yes
Accessibility:	Easy access to I-93, directly across from State House Plaza, near to Concord Hospital, U.S District Court of NH, Merrimack County Court House, and Concord District Court
Lease Rate:	\$18.00 modified gross



Colliers | 175 Canal Street, Suite 401, Manchester, NH 03101
+1 603 623 0100 | colliersnh.com

Floor Plan



1 - MAIN LEVEL FLOOR PLAN

SULLOWAY & HOLLIS
CAPITOL ST. CONCORD NH
JUNE, 2004



 Available Space