



## **Aldape Professional Bldg**

5511 W Intersate 10, San Antonio, TX 78201



**Todd Hess**  
KW Commercial  
2338 N 1604 W, San Antonio , TX 78248  
[toddhess@kwcommercial.com](mailto:toddhess@kwcommercial.com)  
(830) 660-0999



# Aldape Professional Bldg

\$1.67 - \$1.73 /SF/Month

Space perfect for attorney's, accountants, therapist etc.. Landlord pays for water & trash. Tenant responsible for the rest. Very well maintained business center. 4 space business center. Currently has an attorney and Farmers insurance. 2 parking spaces per space.

- 1997 Year built.

Total Space Available:	1,465 SF
Rental Rate:	\$1.67 - \$1.73 /SF/Month
Min. Divisible:	715 SF
Max. Contiguous:	750 SF
Property Type:	Retail
Property Sub-type:	Neighborhood Center
Building Size:	750 SF
Gross Leasable Area:	750 SF
Year Built:	1997
Anchor Tenant 1:	Attorney

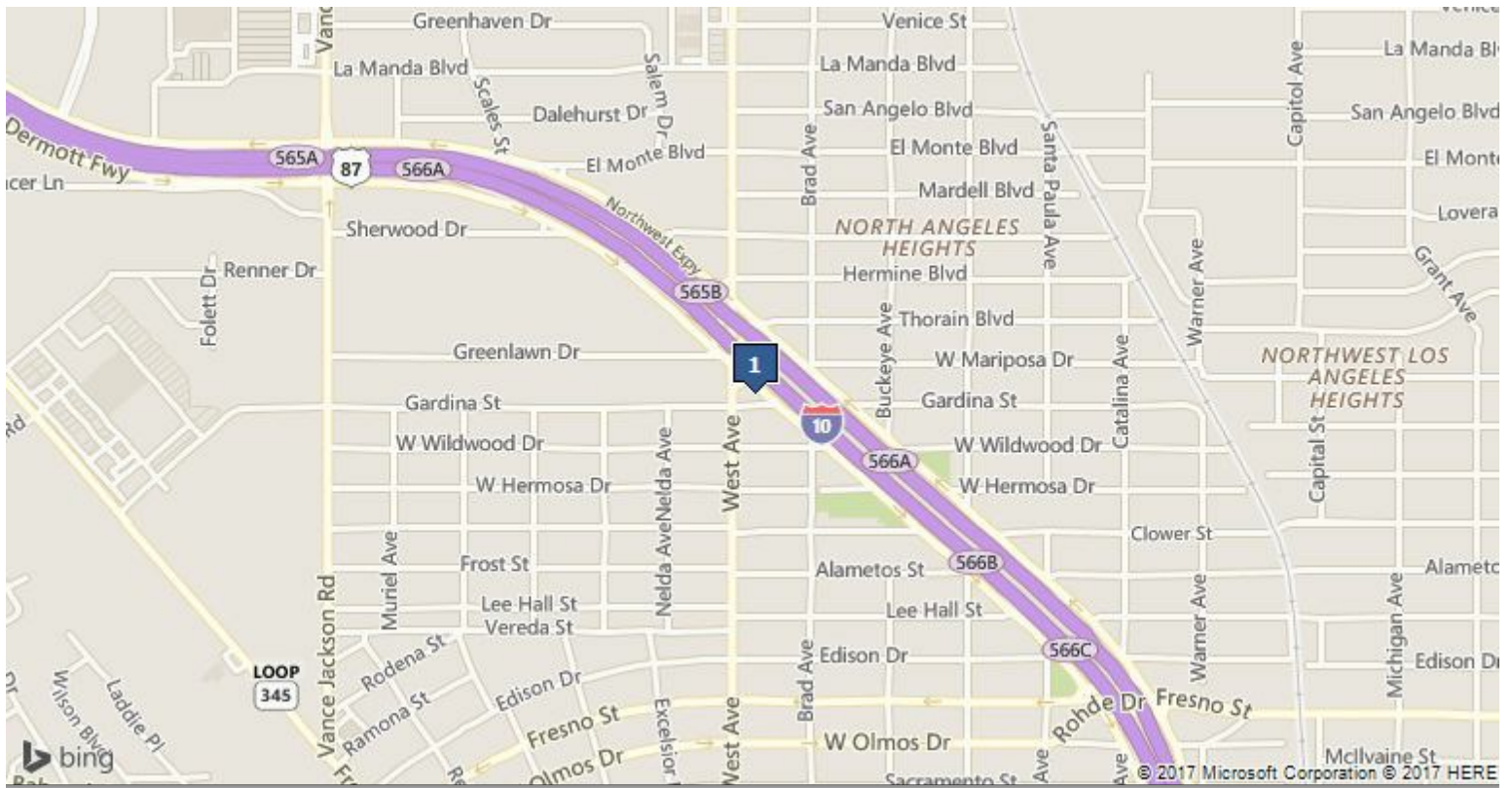


**Sp #2 / 1st floor****1**

Space Available	750 SF
Rental Rate	\$1,300 /Month
Space / Lot Type	Neighborhood Center
Lease Type	Modified Gross
Date Available	Mar 2017
Lease Term	36 Months
No. Parking Spaces	2

**Sp# 4/2nd floor****2**

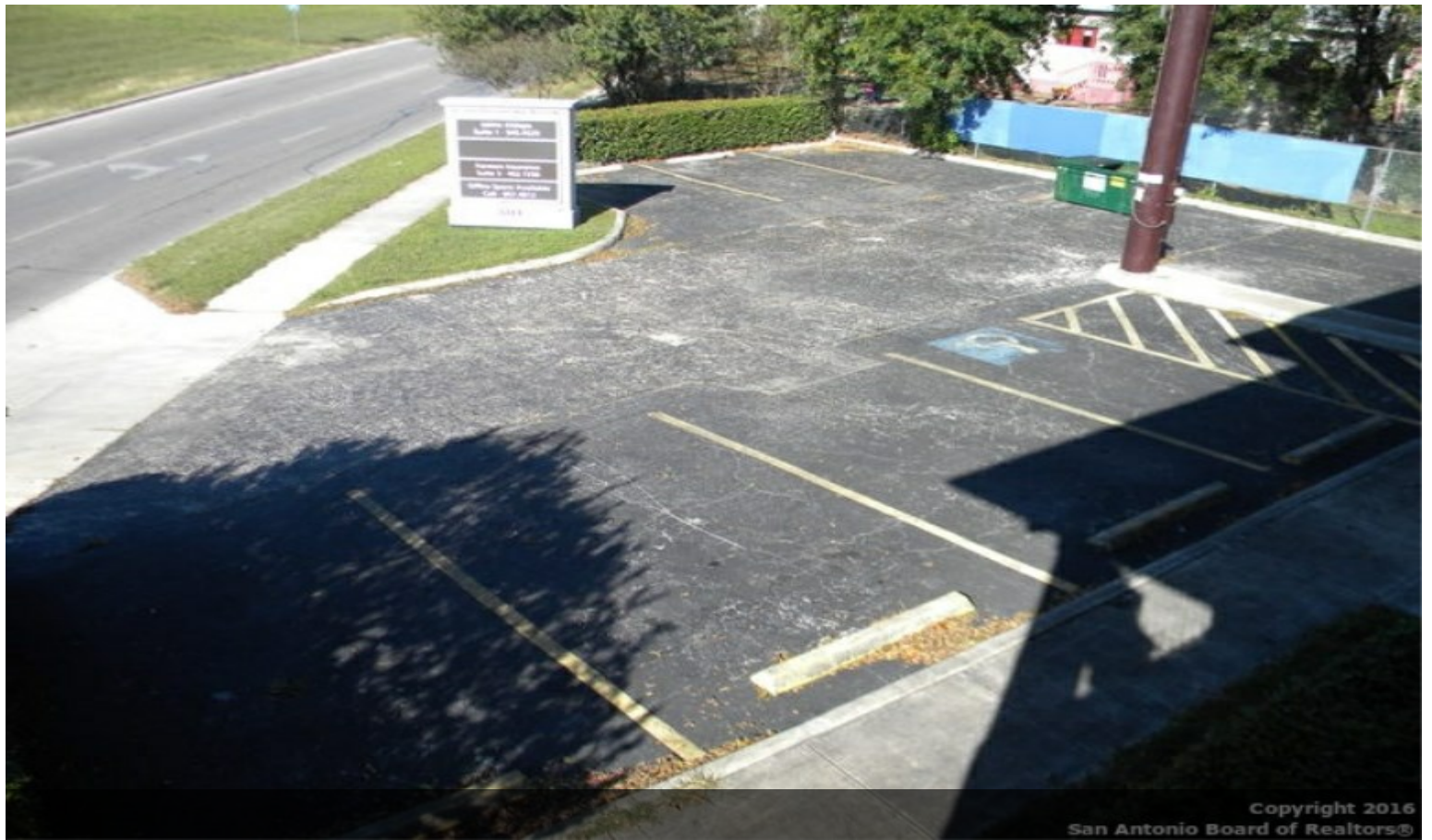
Space Available	715 SF
Rental Rate	\$1,191 /Month
Space / Lot Type	Neighborhood Center
Lease Type	Modified Gross
Date Available	Mar 2017



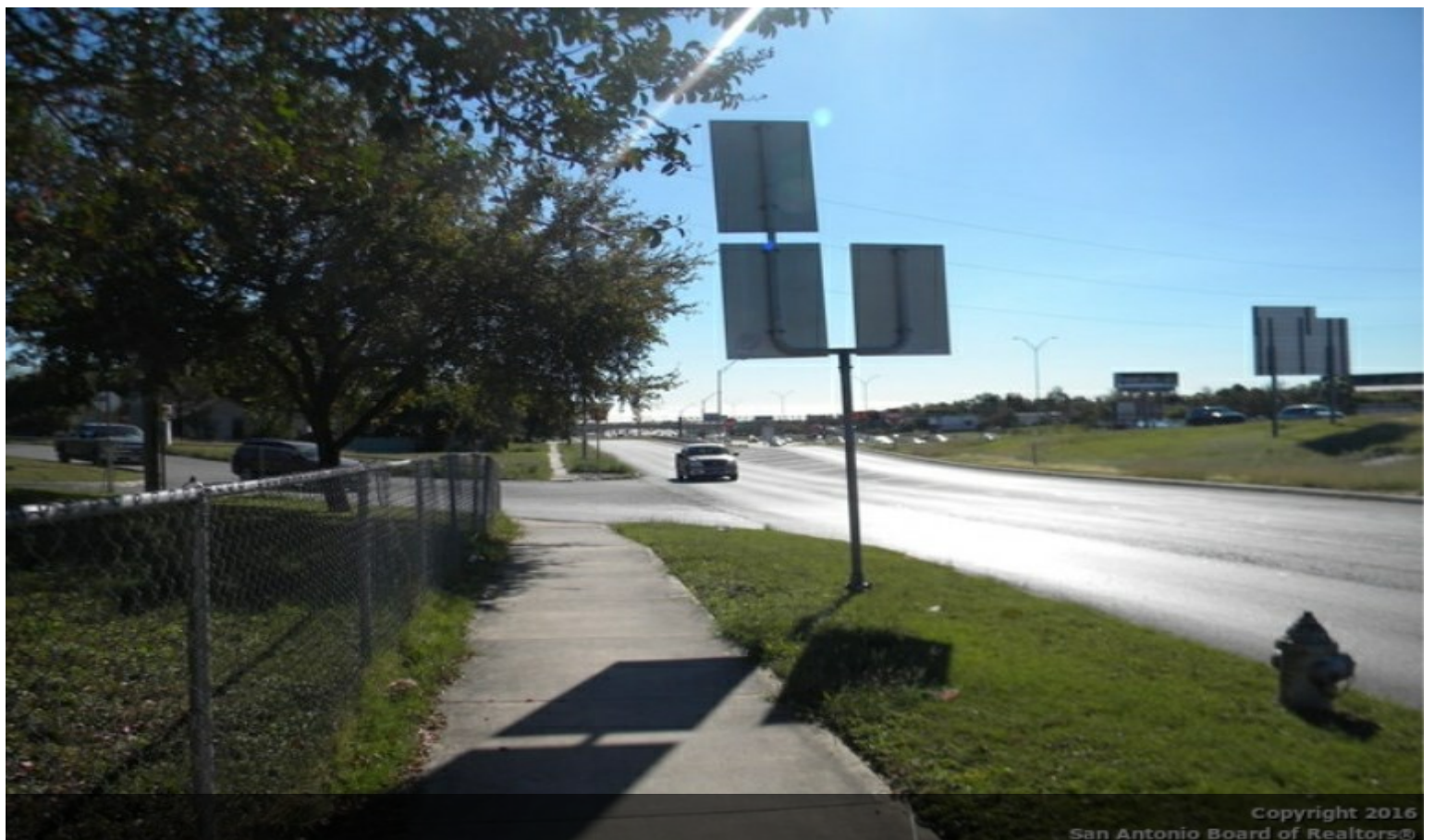
## 5511 W Intersate 10, San Antonio, TX 78201

On I 10 access road. Great visibility for traffic. 5 minutes away from downtown.

# Property Photos



Copyright 2016  
San Antonio Board of Realtors®



Copyright 2016  
San Antonio Board of Realtors®

# Property Photos

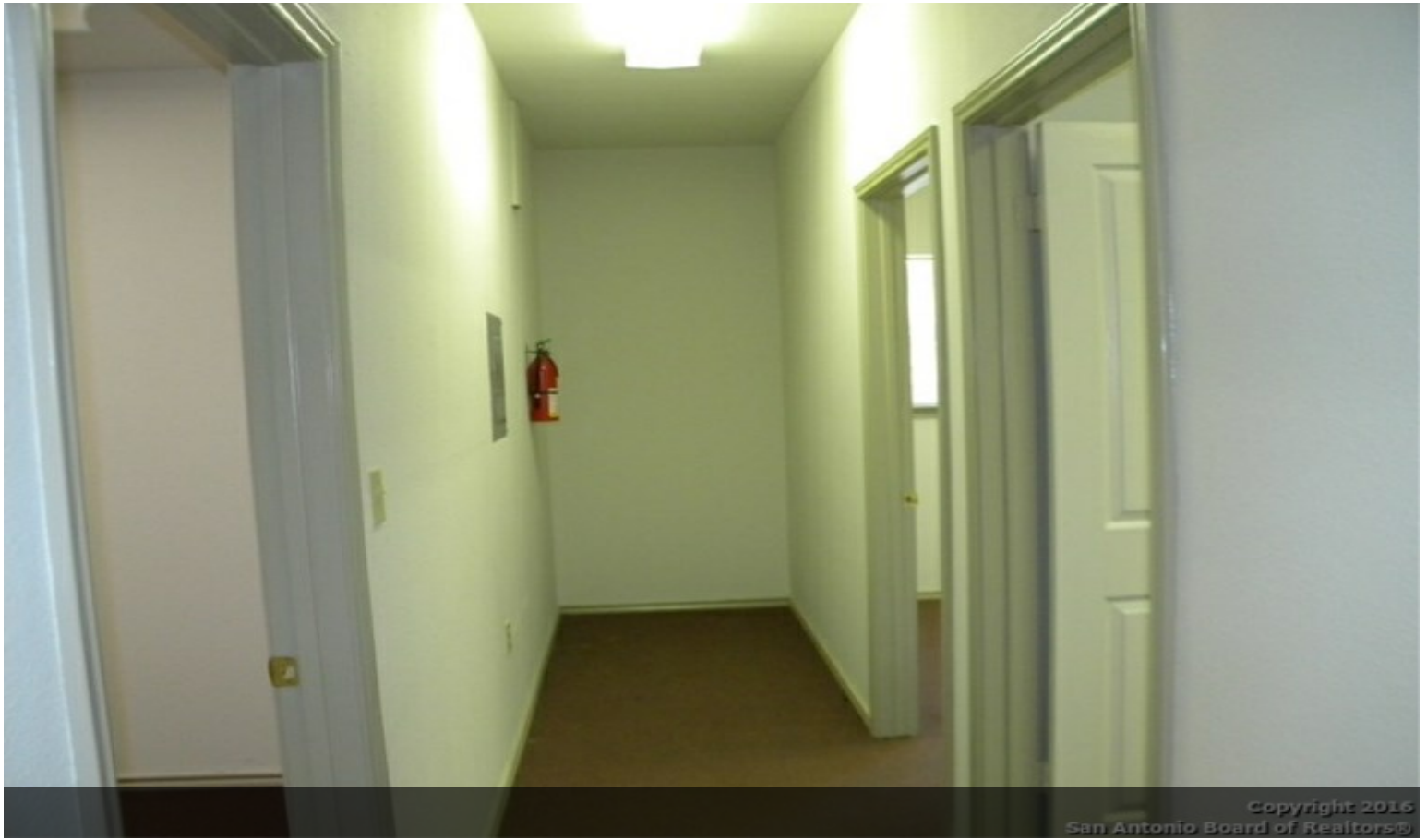


Copyright 2016  
San Antonio Board of Realtors®



Copyright 2016  
San Antonio Board of Realtors®

# Property Photos



Copyright 2016  
San Antonio Board of Realtors®



Copyright 2016  
San Antonio Board of Realtors®

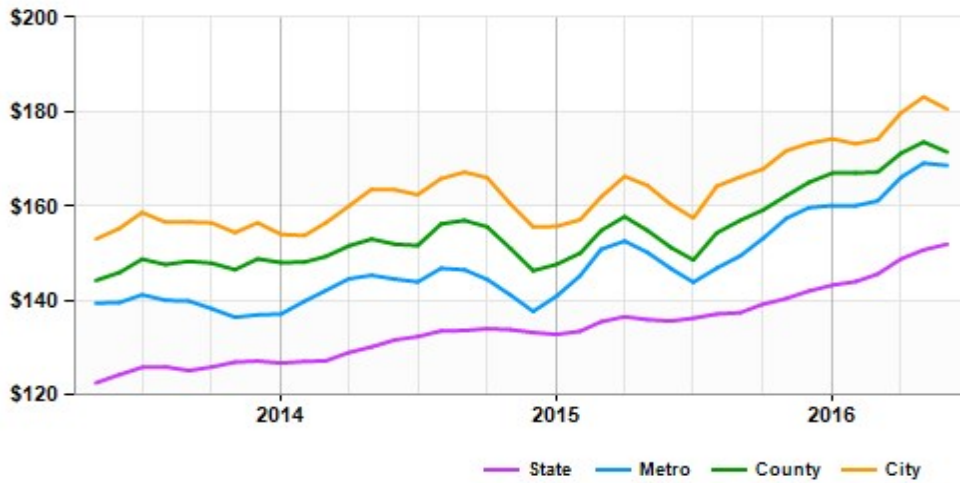
## Property Photos



Copyright 2016  
San Antonio Board of Realtors®

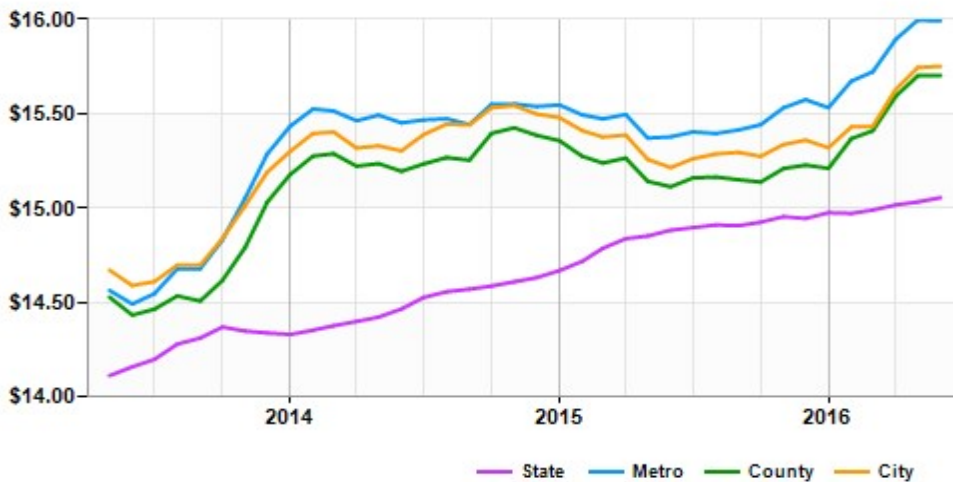
# Market Trends

Asking Prices Retail for Sale San Antonio, TX (\$/SF)



	Jun 16	vs. 3 mo. prior	Y-O-Y
State	\$152	+4.3%	+12.0%
City	\$180	+3.7%	+12.6%
Metro	\$169	+4.7%	+14.9%
County	\$171	+2.6%	+13.4%

Asking Rent Retail for Lease San Antonio, TX (\$/SF/Year)



	Jun 16	vs. 3 mo. prior	Y-O-Y
State	\$15.05	+0.4%	+1.2%
City	\$15.75	+2.1%	+3.5%
Metro	\$15.99	+1.7%	+4.0%
County	\$15.70	+1.9%	+3.9%