

EATON GREEN
ESTATE AGENTS





£18,000.00_{PCM}

Freehold

*Brayards Road,
Peckham,
SE15*

A versatile commercial space located on Brayards Road in the heart of vibrant Peckham, currently configured as office accommodation but offering excellent potential for a variety of alternative uses, subject to the necessary consents. The premises would suit occupiers seeking space for retail, a yoga or Pilates studio, wellness practice, or similar concepts. The property benefits from a flexible internal layout with good natural light, making it easily adaptable to different business needs. It is available on new lease terms, providing an attractive opportunity for both established operators and growing businesses. Situated in one of South East London's most dynamic neighbourhoods, the unit enjoys close proximity to the popular amenities of Peckham, including independent cafés, restaurants, and creative businesses. Peckham Rye Park is just a short walk away, offering a green open space that enhances the appeal for staff and visitors alike. Transport connections are excellent, with Peckham Rye station nearby providing frequent rail and Overground services, ensuring convenient access to Central London and surrounding areas. This is a rare opportunity to secure a flexible and well-located commercial space in a thriving and sought-after location.

FEATURES:

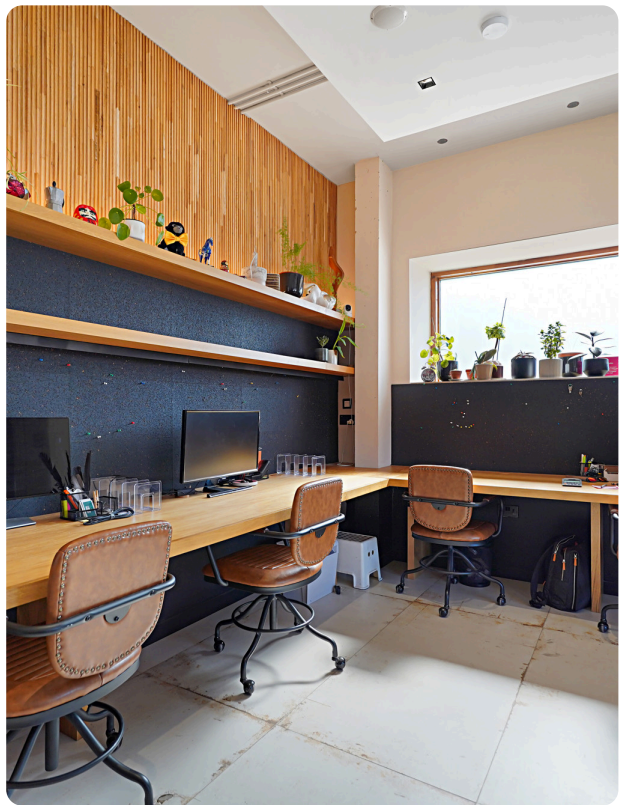
Excellent condition

Suitable for retail

food

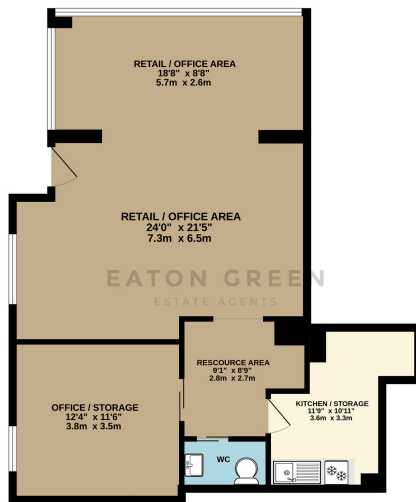
beverage

office etc



Floorplan

GROUND FLOOR
774 sq.ft. (71.9 sq.m.) approx.



RETAIL / OFFICE
TOTAL FLOOR AREA: 774 sq.ft. (71.9 sq.m.) approx.
We warrant every statement made herein to be true and correct to the best of our knowledge and belief at the time of the issue of this document. This plan is for illustrative purposes only and should be used in conjunction with any other documents and plans. The accuracy of the information contained herein is not guaranteed as to their quality or reliability and we do not accept any liability for errors or omissions.

Camberwell Estate Agents

Located in the iconic Hanover Square minutes from Oxford Circus & Bond Street tube stations and just off Regent Street.

📍 112 Denmark Hill Camberwell
SE5 8RX London
Tel: 020 7978 8668

Mayfair Estate Agents

Located in the iconic Hanover Square minutes from Oxford Circus & Bond Street tube stations and just off Regent Street.

📍 17 Hanover Square Mayfair
London W1S 1JB
Tel: 020 7183 8887

ⓘ Under the Property Misdescription Act 1991 we endeavour to make our sales details accurate and reliable but they should not be relied upon as statements or representations of fact and they do not constitute any part of an offer of contract. The seller does not make any representations to give any warranty in relation to the property and we have no authority to do so on behalf of the seller. Services, fittings and equipment referred to in the sales details have not been tested (unless otherwise stated) and no warranty can be given as to their condition. We strongly recommend that all the information which we provide about the property is verified by yourself or your advisers.

Under the Estate Agency Act 1991 you will be required to give us financial information in order to verify your financial position before we can recommend any offer to the vendor.

