



**THE
NORTHERN
TOWER**

RETAIL PARK
RETFORD



PRE LET TO

THE NORTHERN TOWER



SITE PLAN

RETFORD
LONDON ROAD

In addition to the pre-let to Lidl, the scheme provides a range of retail and leisure units from 1,539 sq ft to 14,403 sq ft with planning for A1, A3, A5 and D2 uses.

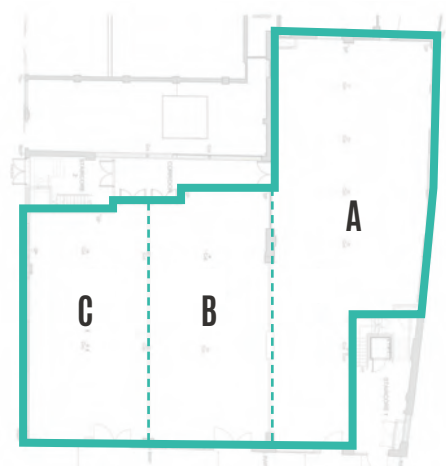
UNIT 5

Unit 5	sqft	sqm
--------	------	-----

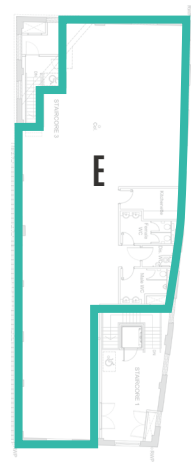
Ground Floor A	2,981	277
Ground Floor B	1,679	156
Ground Floor C	1,539	143
First Floor D	6,243	580
Second Floor E	2,852	265

*Areas are subject to verification on completion of the development.

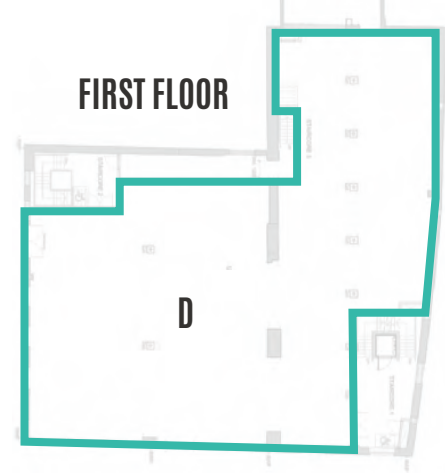
GROUND FLOOR



SECOND FLOOR



FIRST FLOOR



UNIT 6,7,8

Unit 6	sqft	sqm
--------	------	-----

Ground Floor	8,224	764
--------------	-------	-----

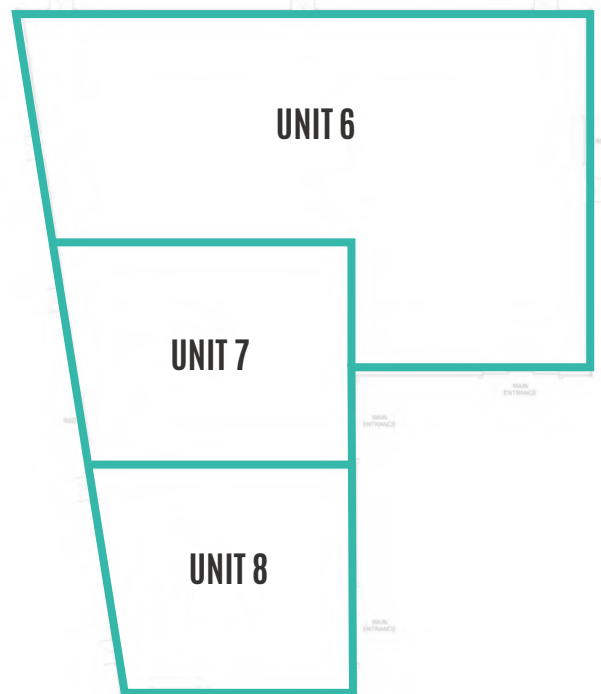
Unit 7	sqft	sqm
--------	------	-----

Ground Floor	3,283	305
--------------	-------	-----

Unit 8	sqft	sqm
--------	------	-----

Ground Floor	2,896	269
--------------	-------	-----

*Areas are subject to verification on completion of the development.





LOCATION

The Northern Tower is a new retail development prominently located on London Road and is just a few minutes walk from Retford town centre.

The Northern Tower is part of a wider regeneration project that will create over 400 jobs to bolster the affluent, vibrant and attractive market town in North Nottinghamshire.

The scheme provides 8 retail units (with further subdivision possible) that totals 50,000 sq ft (4,600 sq m) and 162 car park spaces.



THE NORTHERN TOWER

TERMS & FURTHER INFORMATION

Units are to let on standard FRI terms. Please contact the agents Brown & Co and Space Retail Property Consultants for further information.

BROWN & CO

Contact: Paul White
E. pdwhite@brown-co.com
T. 01777 712 942
M. 07917 761 417
W. brown-co.com



Contact: Ben Taylor
E. ben.taylor@space-rpc.com
T. 0345 900 3911
M. 08780 682 050
W. space-rpc.com

Contact: Susan Harrison
E. susan.harrison@space-rpc.com
T. 0345 900 3909
M. 07850 586 581
W. space-rpc.com



A DEVELOPMENT BY



**STRAWSONS
PROPERTY**