

NCC

NATOMAS COMMERCE CENTER



OFFICE, INDUSTRIAL & FLEX SPACE





NCC

NATOMAS COMMERCE CENTER

OFFICE, INDUSTRIAL & FLEX SPACE

Tommy Ponder, SIOR
Executive Vice President
License #01431506
+1 916 563 3005
tommy.ponder@colliers.com

George Vrame, SIOR
Senior Vice President
License #02028936
+1 916 563 3041
george.vrame@colliers.com

Emily Breece
Associate
License #02147323
+1 916 563 3091
emily.breece@colliers.com

PROPERTY OVERVIEW

[View Interior Photos](#)

PARK SIZE

8 BUILDINGS | ±324,490 SF

MINIMUM SUITE SIZE

±1,520 SF

CLEAR HEIGHT

20' - 24'

SPRINKLER DENSITY

ESFR

ZONING

MP (INDUSTRIAL - OFFICE PARK)

YEAR BUILT

2006-2007

POWER

480V & 208V, 3 PHASE | 200 AMPS MINIMUM PER SUITE

INTERNET/DATA PROVIDER

AT&T (COMCAST AVAILABLE IN SELECT BUILDINGS)

POWER PROVIDER

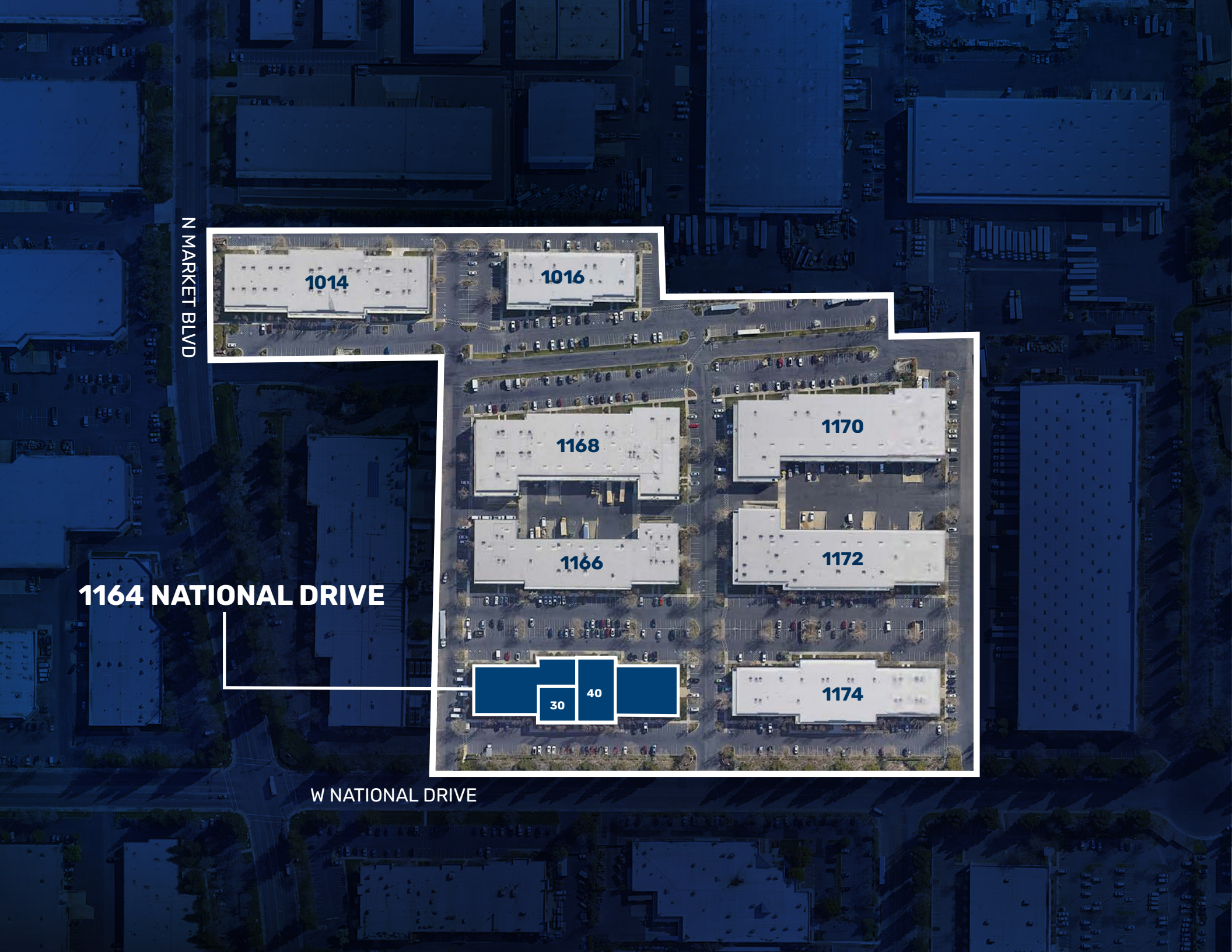
SMUD

DOCK DOORS

YES

GRADE LEVEL DOORS

YES



1164 NATIONAL DRIVE

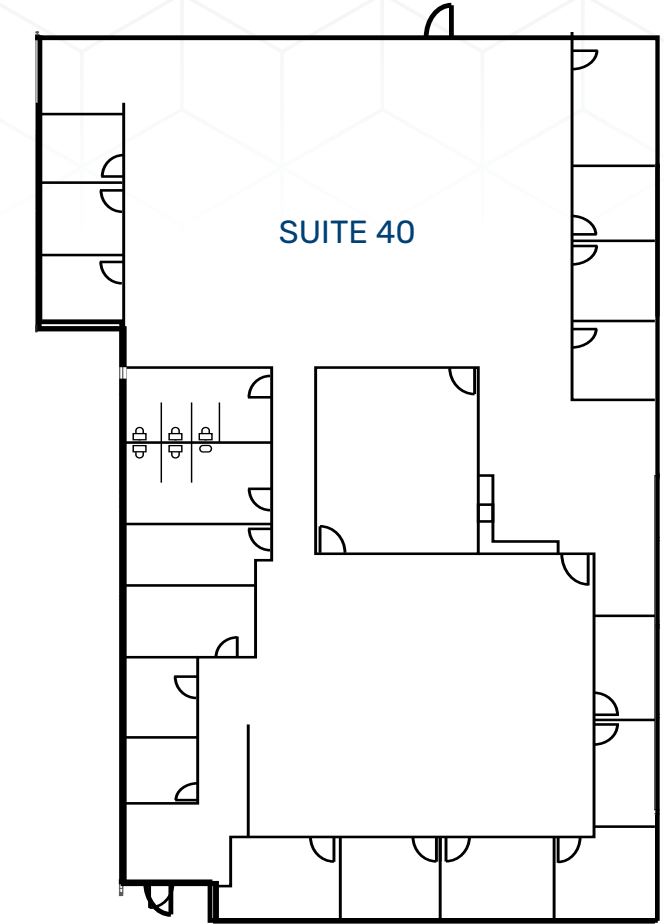
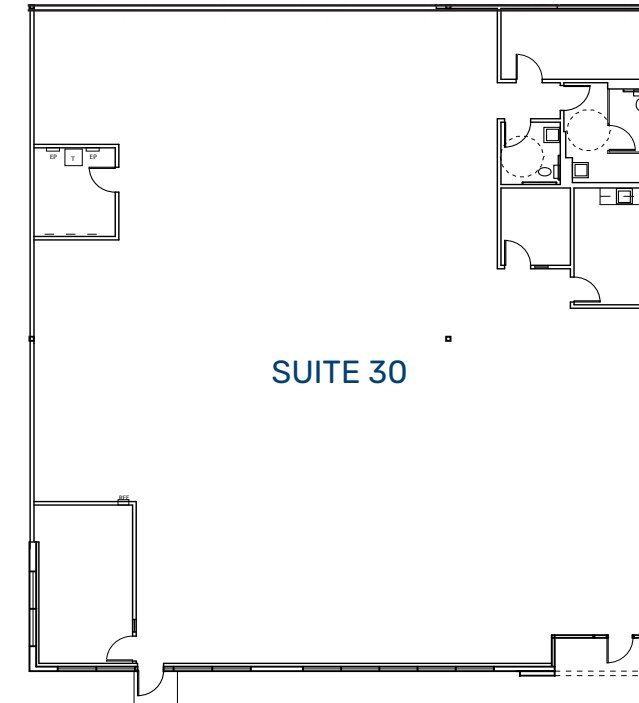
N MARKET BLVD

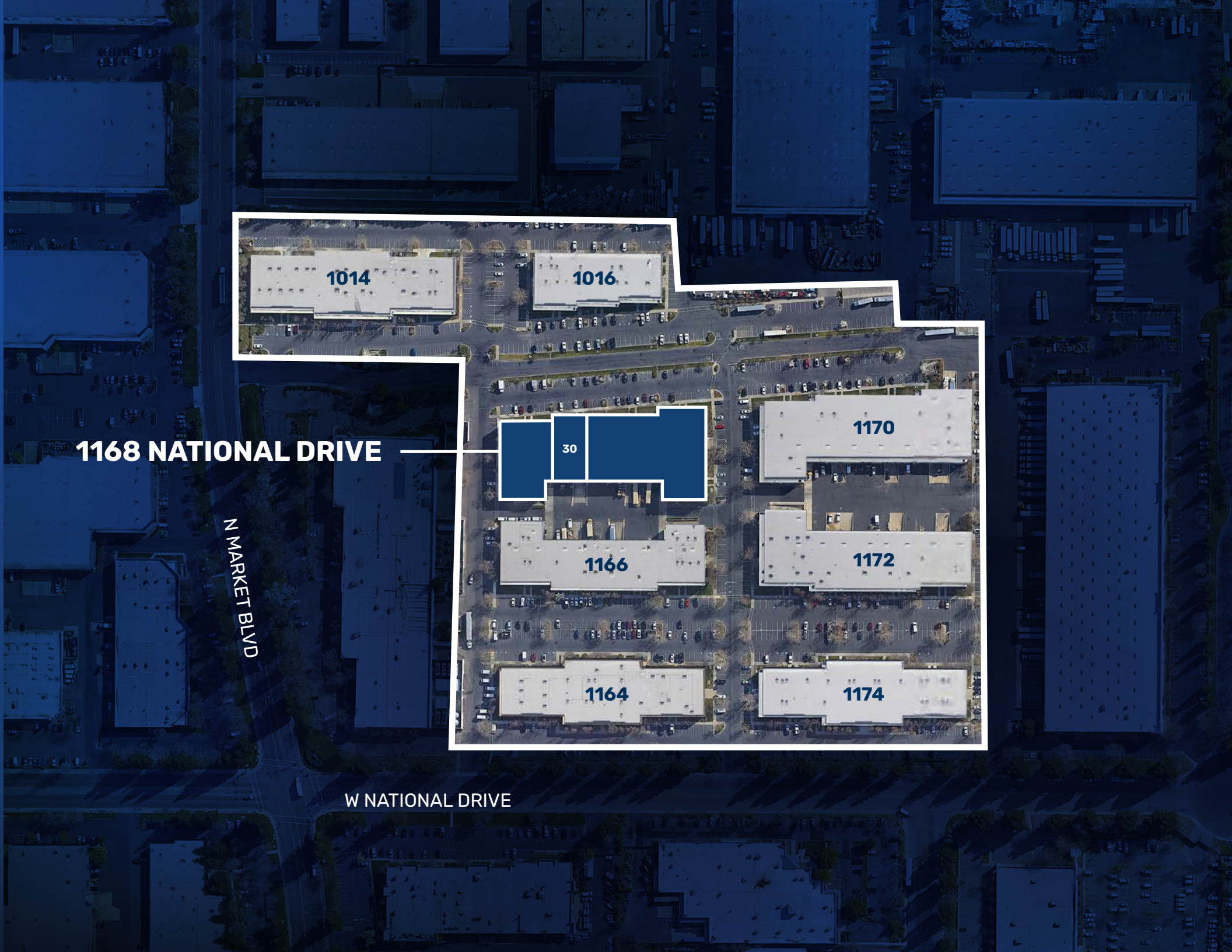
W NATIONAL DRIVE

1164 NATIONAL DRIVE

SUITE 30 | ±5,784 TOTAL SF | ±5,784 SF OFFICE

SUITE 40 | ±9,114 TOTAL SF | ±9,114 SF OFFICE

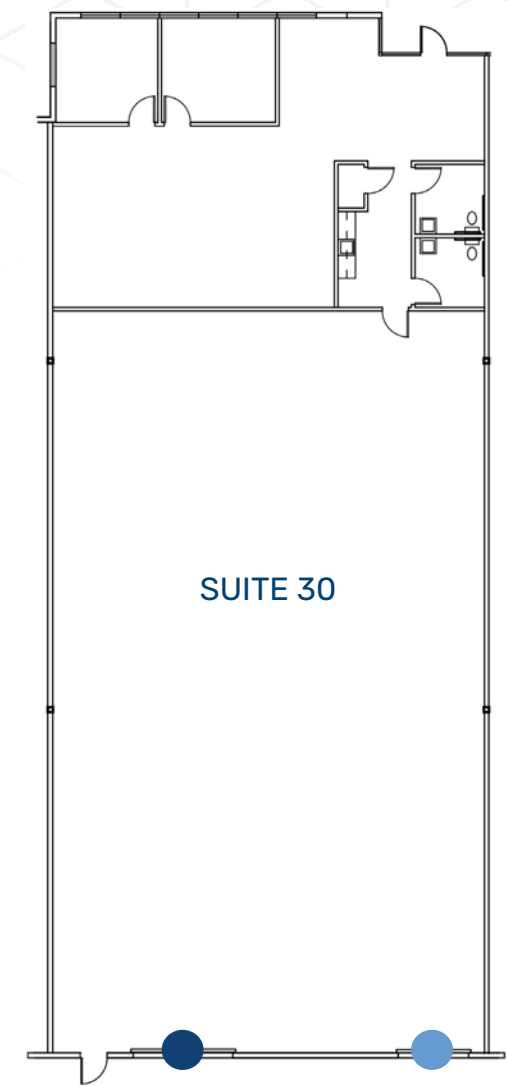


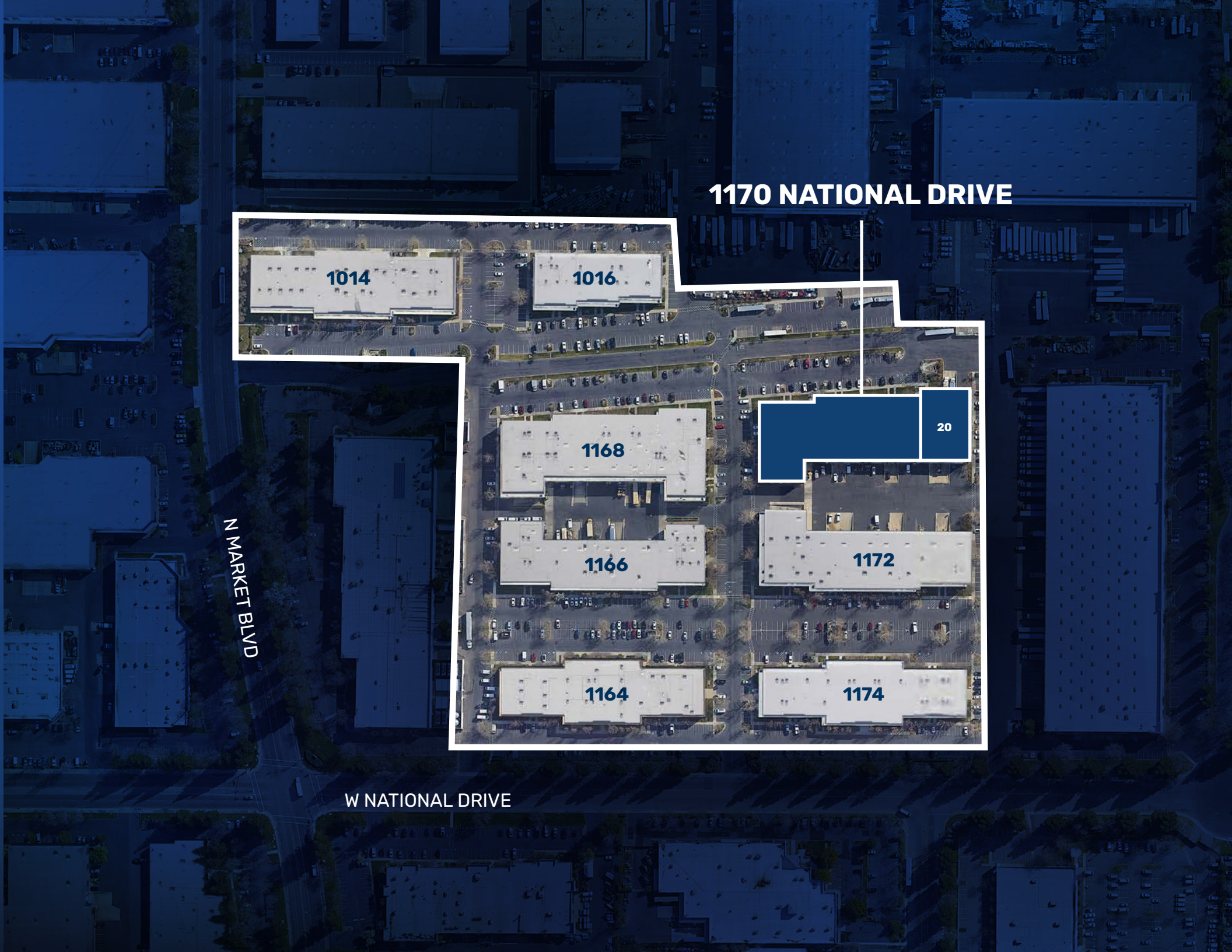


1168 NATIONAL DRIVE

SUITE 30 | ±6,063 TOTAL SF | ±1,763 SF OFFICE | 1 DOCK & 1 GRADE LEVEL DOOR

- GRADE LEVEL DOOR
- DOCK DOOR



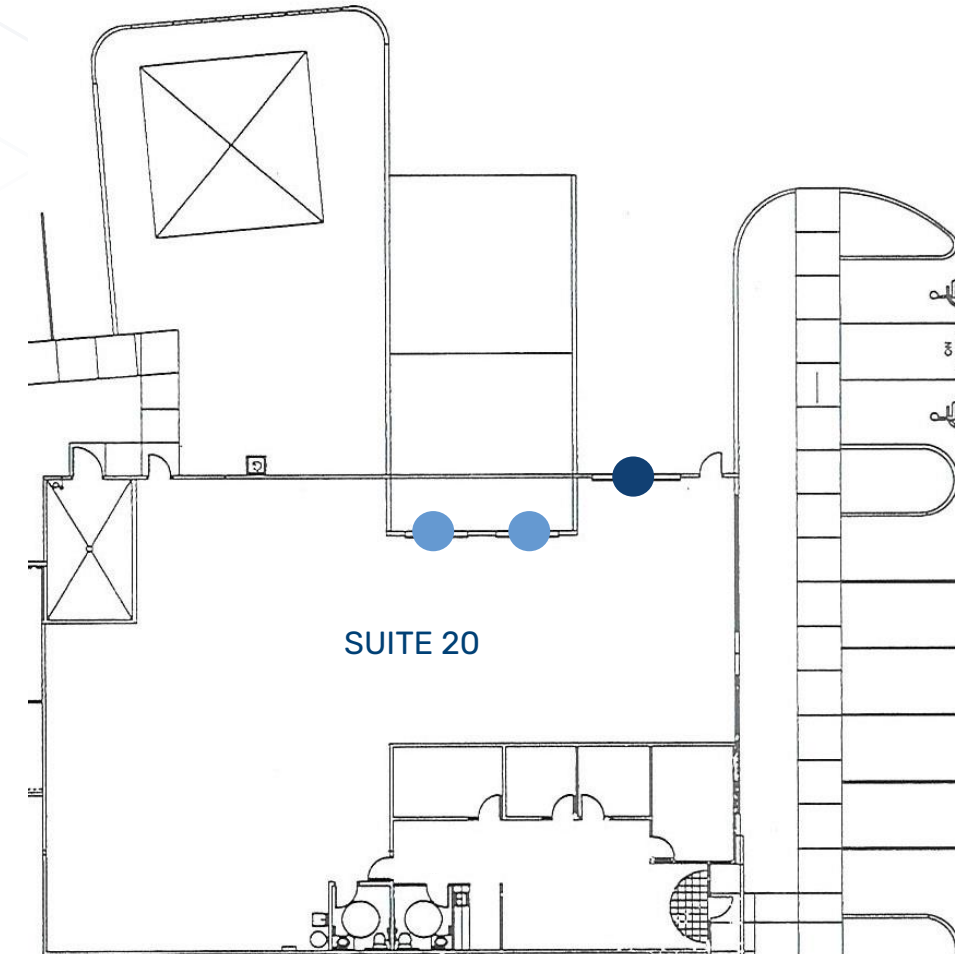


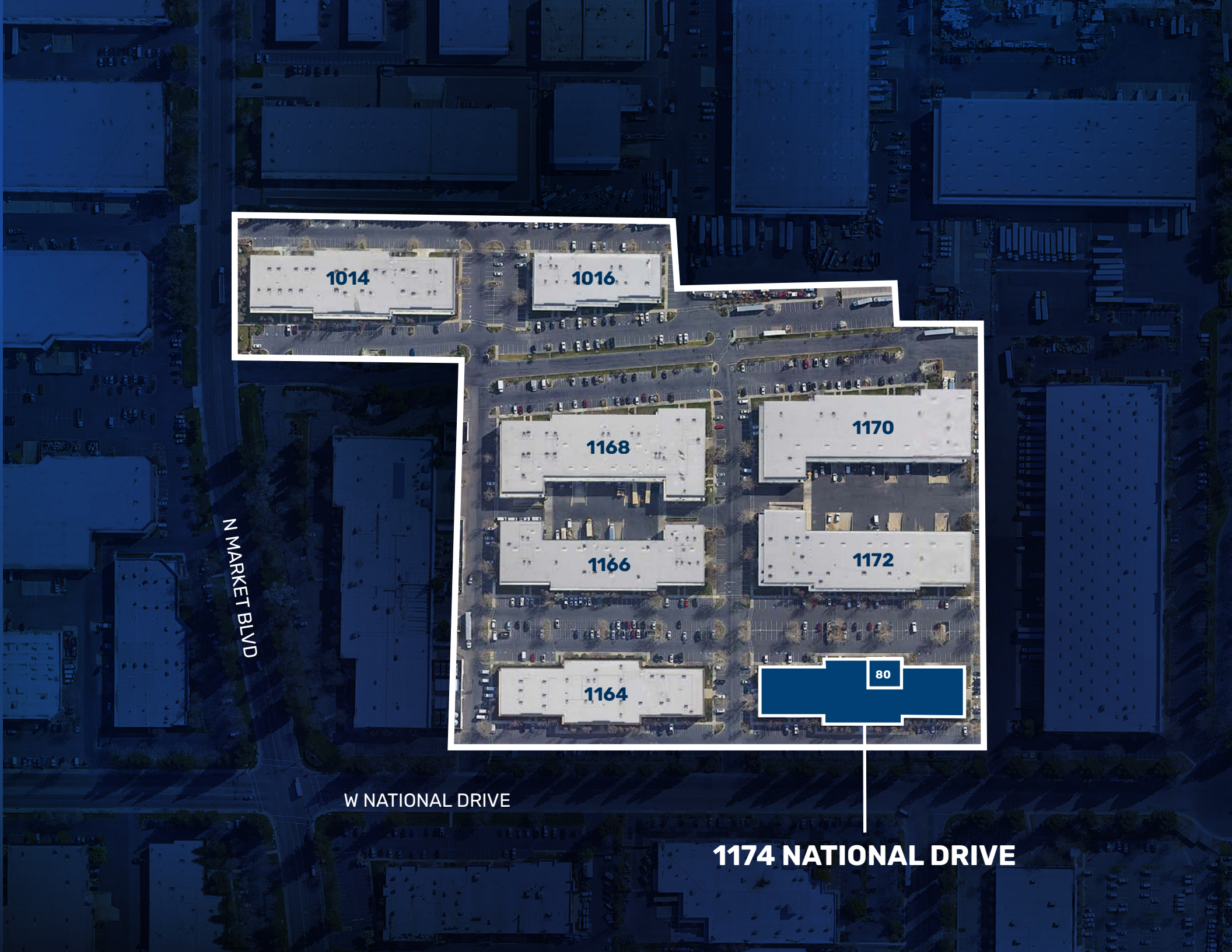
1170 NATIONAL DRIVE

1170 NATIONAL DRIVE

SUITE 20 | ±6,055 TOTAL SF | ±1,434 SF OFFICE | ±4,621 SF | 2 DOCKS | 1 GRADE LEVEL DOOR

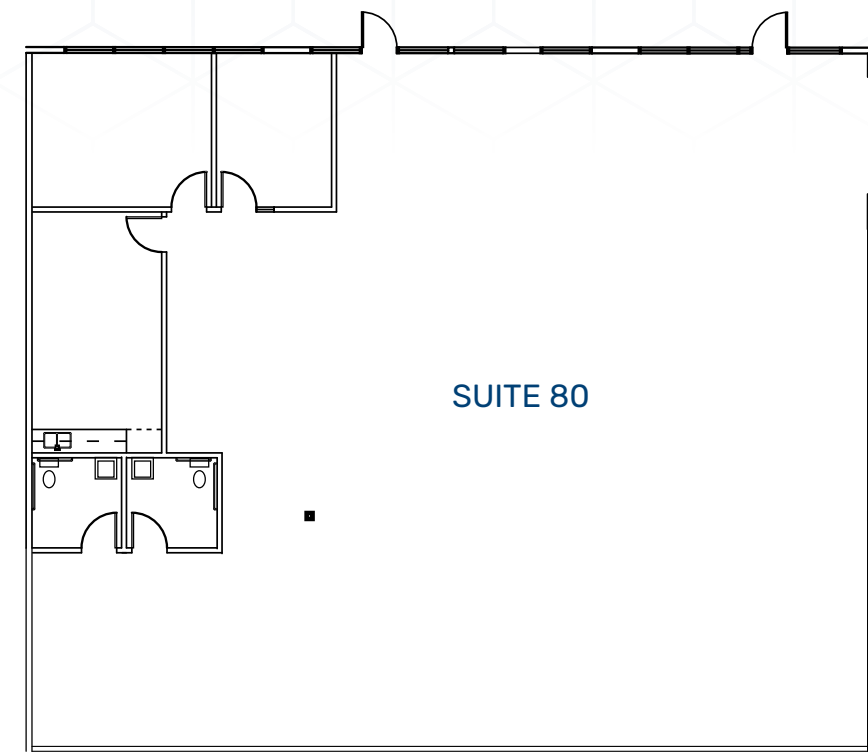
- GRADE LEVEL DOOR
- DOCK DOOR



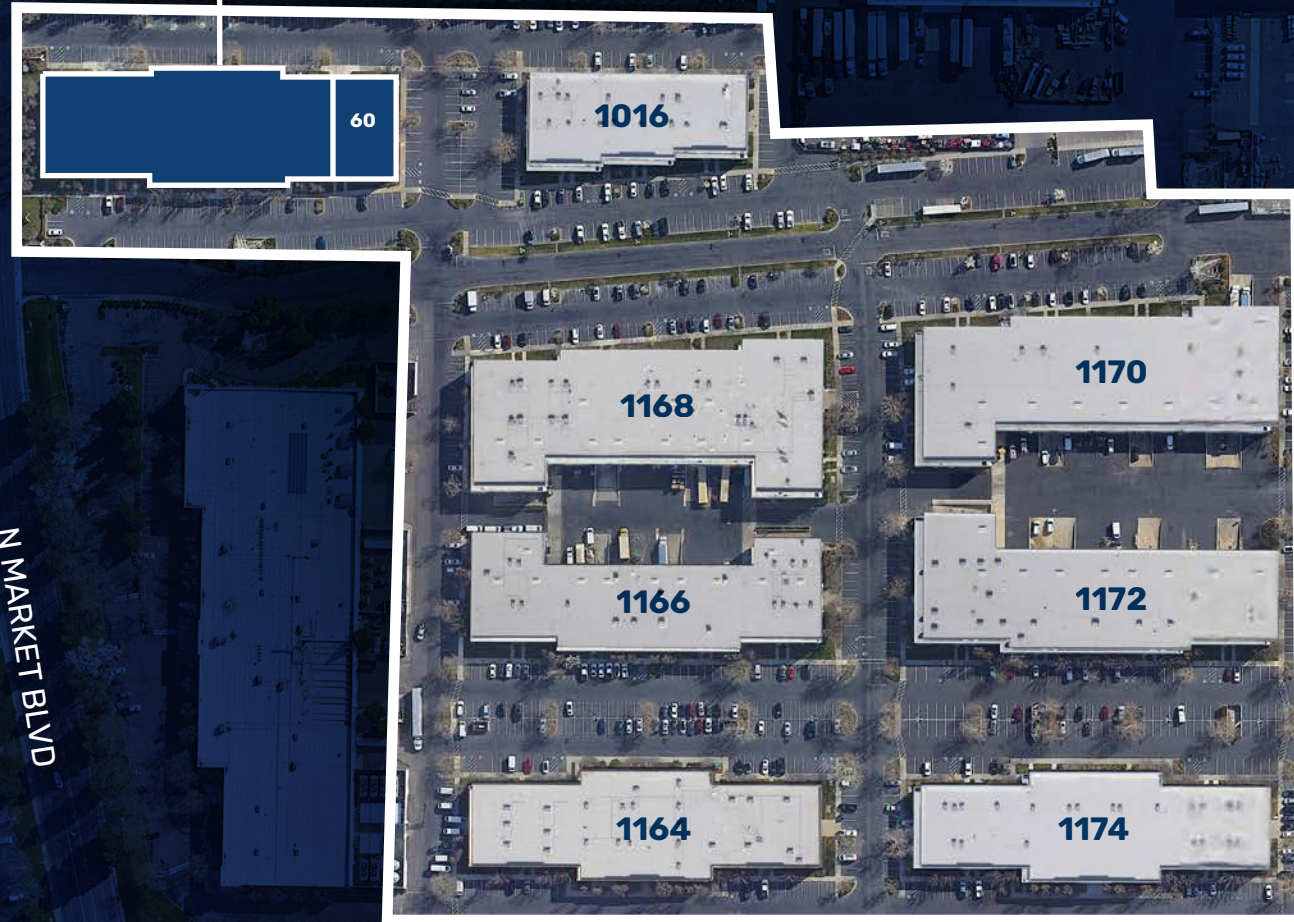


1174 NATIONAL DRIVE

SUITE 80 | ±4,329 TOTAL SF | ±4,329 SF OFFICE



1014 N MARKET BLVD



N MARKET BLVD

W NATIONAL DRIVE

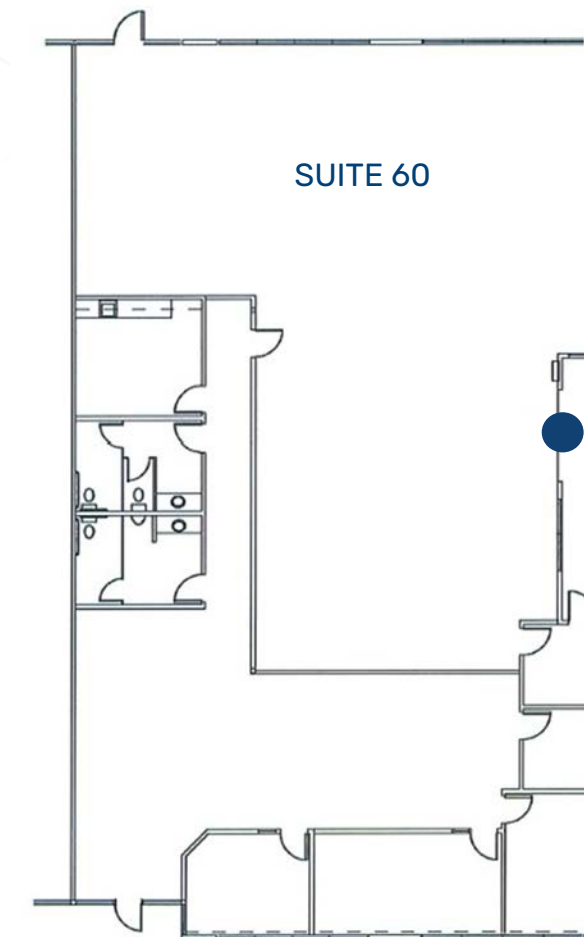
1014 N MARKET BLVD

SUITE 60 | ±6,037 TOTAL SF | ±2,519 SF OFFICE | 1 GRADE LEVEL DOOR

SUBLEASE OR DIRECT LEASE AVAILABLE

SUBLEASE THROUGH 6/30/2028

● GRADE LEVEL DOOR



NEARBY AMENITIES

1 NATOMAS MARKETPLACE

- | | |
|------------------------------|---------------------------|
| 1. REGAL NATOMAS MARKETPLACE | 9. FAMOUS FOOTWEAR |
| 2. KOSHI RAMEN BAR | 10. HOMEGOODS |
| 3. APPLEBEE'S | 11. IN-N-OUT |
| 4. THE HOME DEPOT | 12. STARBUCKS |
| 5. PETSMART | 13. ROSS DRESS FOR LESS |
| 6. STAPLES | 14. SHELL |
| 7. BATH & BODY WORKS | 15. RUBIO'S COASTAL GRILL |
| 8. WALMART | |

2 NORTH NATOMAS PLACE

- | | |
|--|----------------------------|
| 1. CALIFORNIA FAMILY FITNESS - NATOMAS | 3. STARBUCKS |
| 2. BAD BAKERS NATOMAS | 4. OSHMIA SUSHI SPORTS BAR |

3

- | | |
|-------------------------------------|------------------------|
| 1. FEDEX OFFICE PRINT & SHIP CENTER | 4. CHILI'S GRILL & BAR |
| 2. FIREHOUSE SUBS | 5. TEA 18 |
| 3. CHASE BANK | 6. POKE FIX |

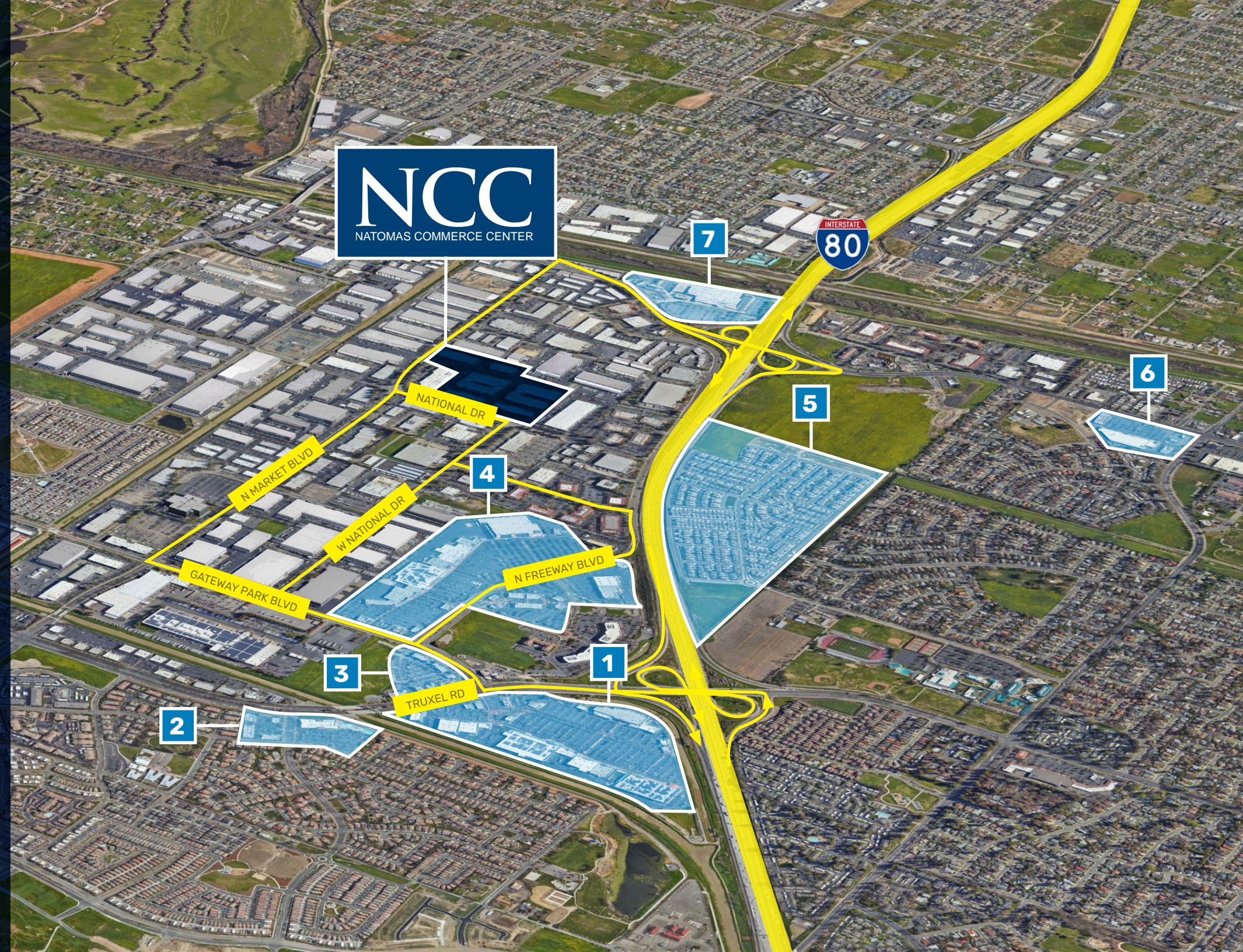
4 THE PROMENADE

- | | |
|--------------------------------|---------------------------------|
| 1. TARGET | 9. T.J. MAXX |
| 2. OLD NAVY | 10. OFF BROADWAY SHOE WAREHOUSE |
| 3. ULTA BEAUTY | 11. ASHLEY STORE |
| 4. DAISO | 12. BEST BUY |
| 5. WINGSTOP | 13. BOOT BARN |
| 6. OLIVE GARDEN | 14. BEVMO |
| 7. BJ'S RESTAURANT & BREWHOUSE | 15. BUFFALO WILD WINGS |
| 8. PANERA BREAD | |

5 PARKBRIDGE RESIDENTIAL

- ### 6
- | | |
|----------------|-----------|
| 1. FOODS | 3. SUBWAY |
| 2. DOLLAR TREE | 4. ARCO |

- ### 7
- | | |
|----------------------|-----------------------|
| 1. DUTCH BROS COFFEE | 3. CILANTRO'S MEXICAN |
| 2. WENDY'S | 4. WESTERN UNION |



NCC

NATOMAS COMMERCE CENTER



Tommy Ponder, SIOR
Executive Vice President
License #01431506
+1 916 563 3005
tommy.ponder@colliers.com

George Vrame, SIOR
Senior Vice President
License #02028936
+1 916 563 3041
george.vrame@colliers.com

Emily Breece
Associate
License #02147323
+1 916 563 3091
emily.breece@colliers.com