

Perfect for restaurants retail and offices!

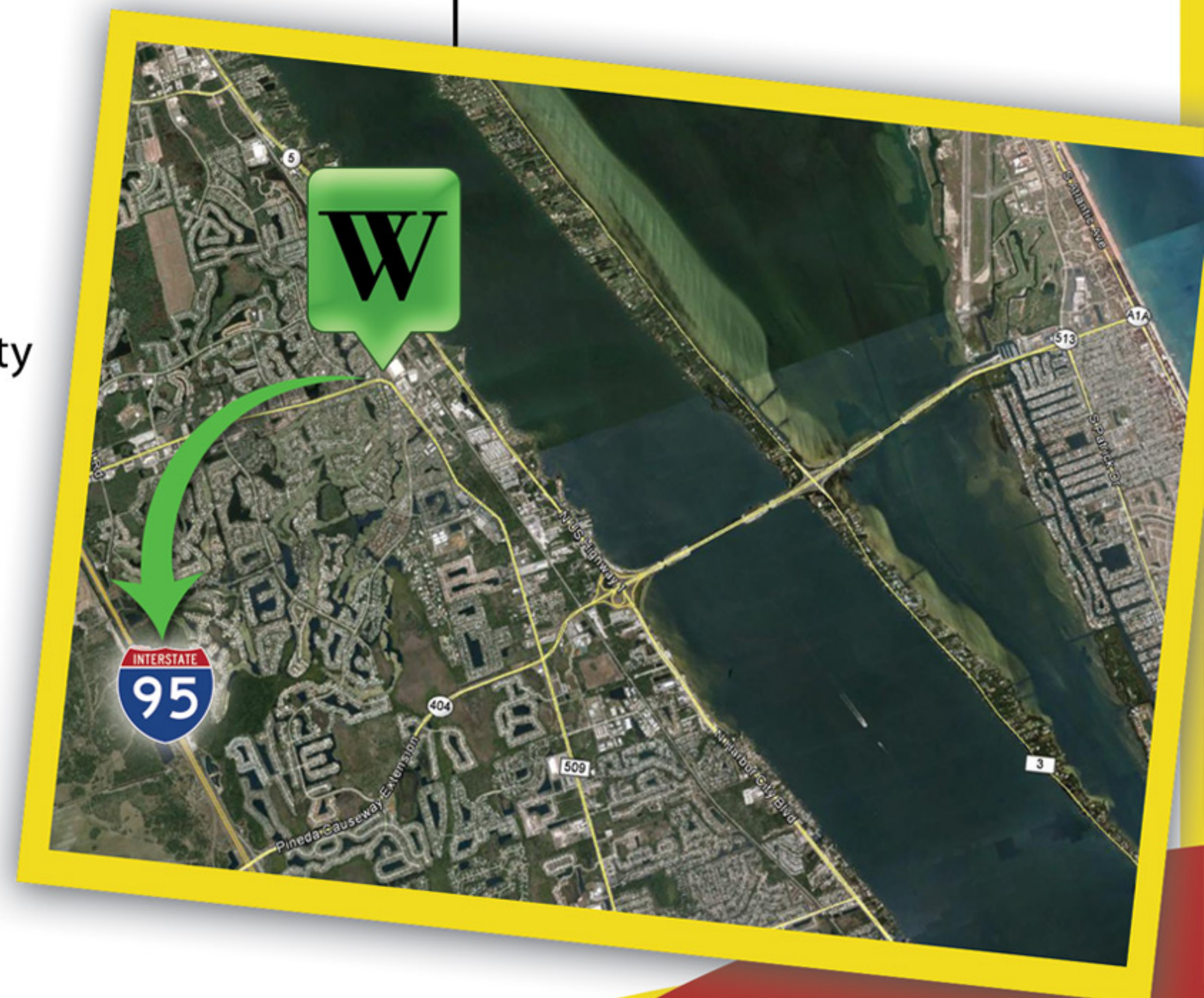
\$1,650,000

3.30 AC

Wickham Rd. & Waelti Drive,
Melbourne, FL 32940

Watson Commercial Real Estate presents this property
zoned BU-1 (Retail)

- ✓ perfect for restaurants
- ✓ retail and offices
- ✓ Traffic light
- ✓ with lots of road frontage
- ✓ 2010 Traffic count 32,200 daily.



Duane A. Watson
Broker

Office: (321) 459-0000 Ext. 15
Cell: (321) 223-8845



Tony Masone
Broker Associate

Office: (321) 459-0000 Ext. 12
Cell: (321) 693-8669

Office: **(321)459-0000**

Copyright © 2014 | Watson Commercial Real Estate

335 S. Plumosa Street Merritt Island, FL 32952

Property Details

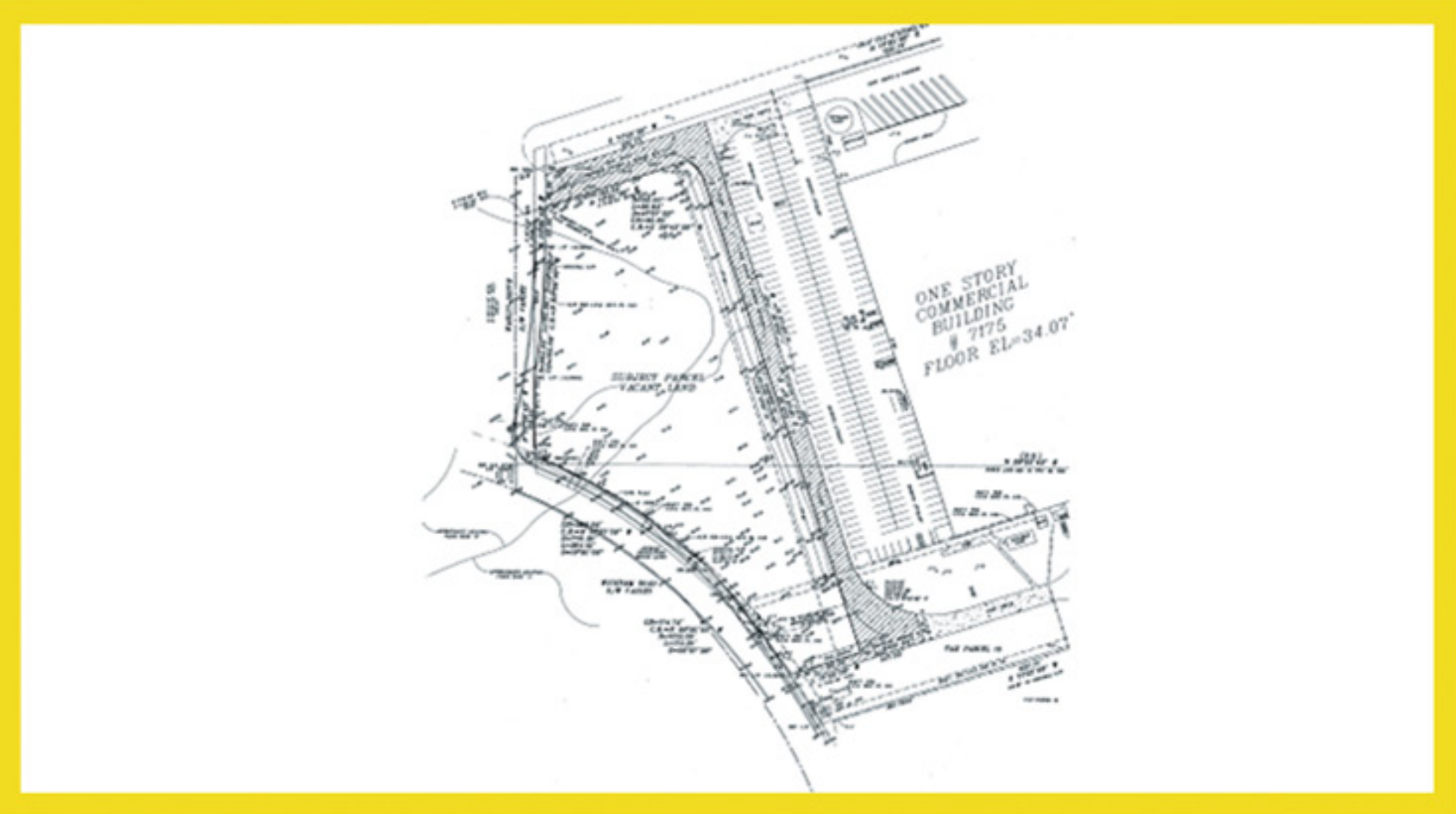
Price: \$1,650,000

Lot Size: 3.3 Acres

Property Type: Land

Sub-type: Retail (land)

Property Address: Wickham Rd. & Waelti Drive,
Melbourne, FL 32940



Demographics

	1 Miles	3 Miles	5 Miles
Total Population	6,844	25,352	48,564
AVG. Household Income	\$77,463	\$88,363	\$85,674

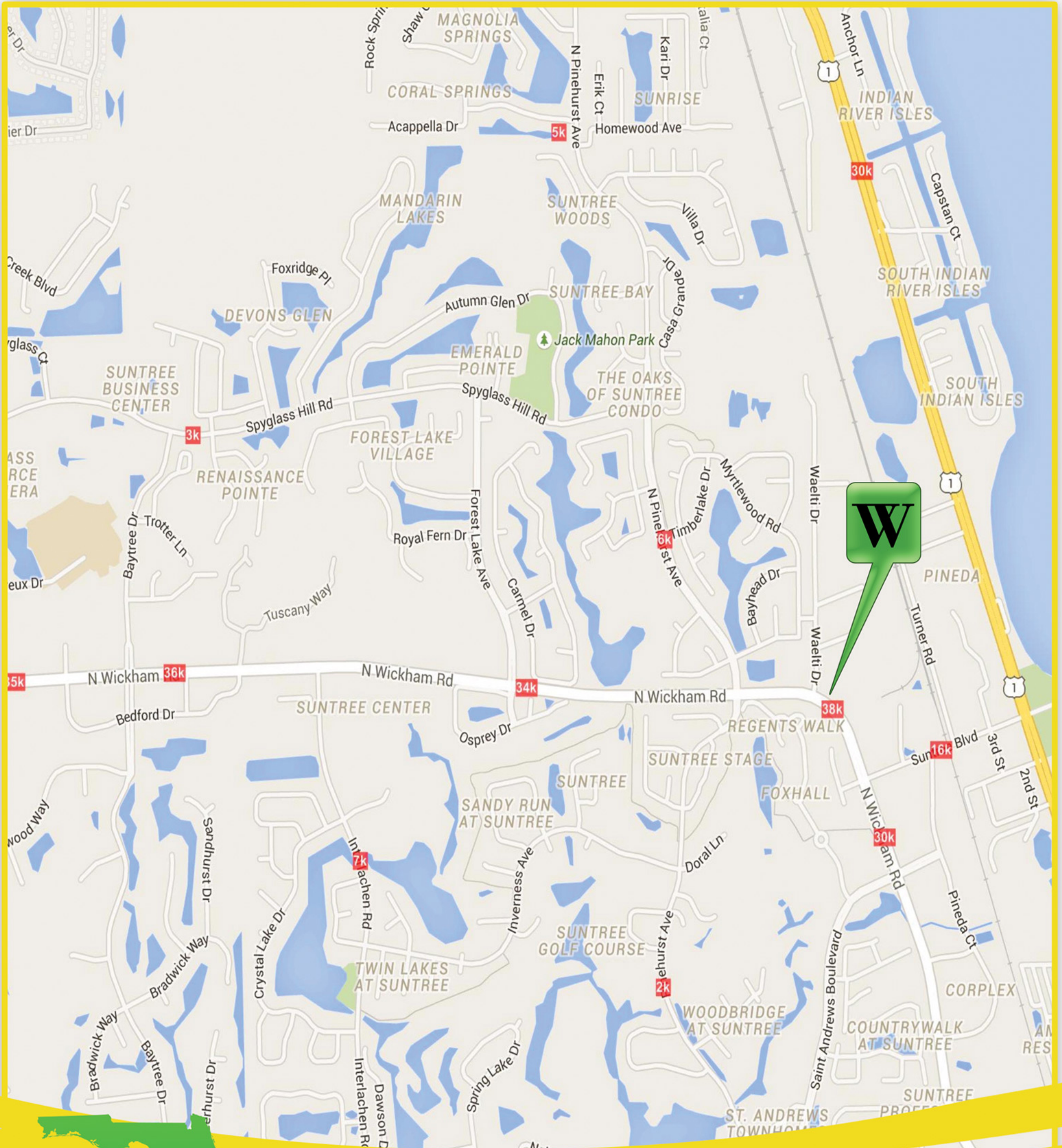


WATSON
COMMERCIAL
REAL ESTATE, INC

Office: **(321)459-0000**
Copyright © 2014 | Watson Commercial Real Estate
335 S. Plumosa Street Merritt Island, FL. 32952

Traffic Count

Wickham Rd. & Waelti Drive, Melbourne, FL 32940



WATSON
COMMERCIAL
REAL ESTATE, INC

Office: **(321)459-0000**

Copyright © 2014 | Watson Commercial Real Estate

335 S. Plumosa Street Merritt Island, FL 32952