

FOR SALE - 81.21 AC

17725 W 199TH ST, SPRING HILL, KANSAS



JIB FELTER

(913) 333-7830

jib.felter@reececommercial.com

DICK STEPHENS

(913) 491-3366

ds@reececommercial.com

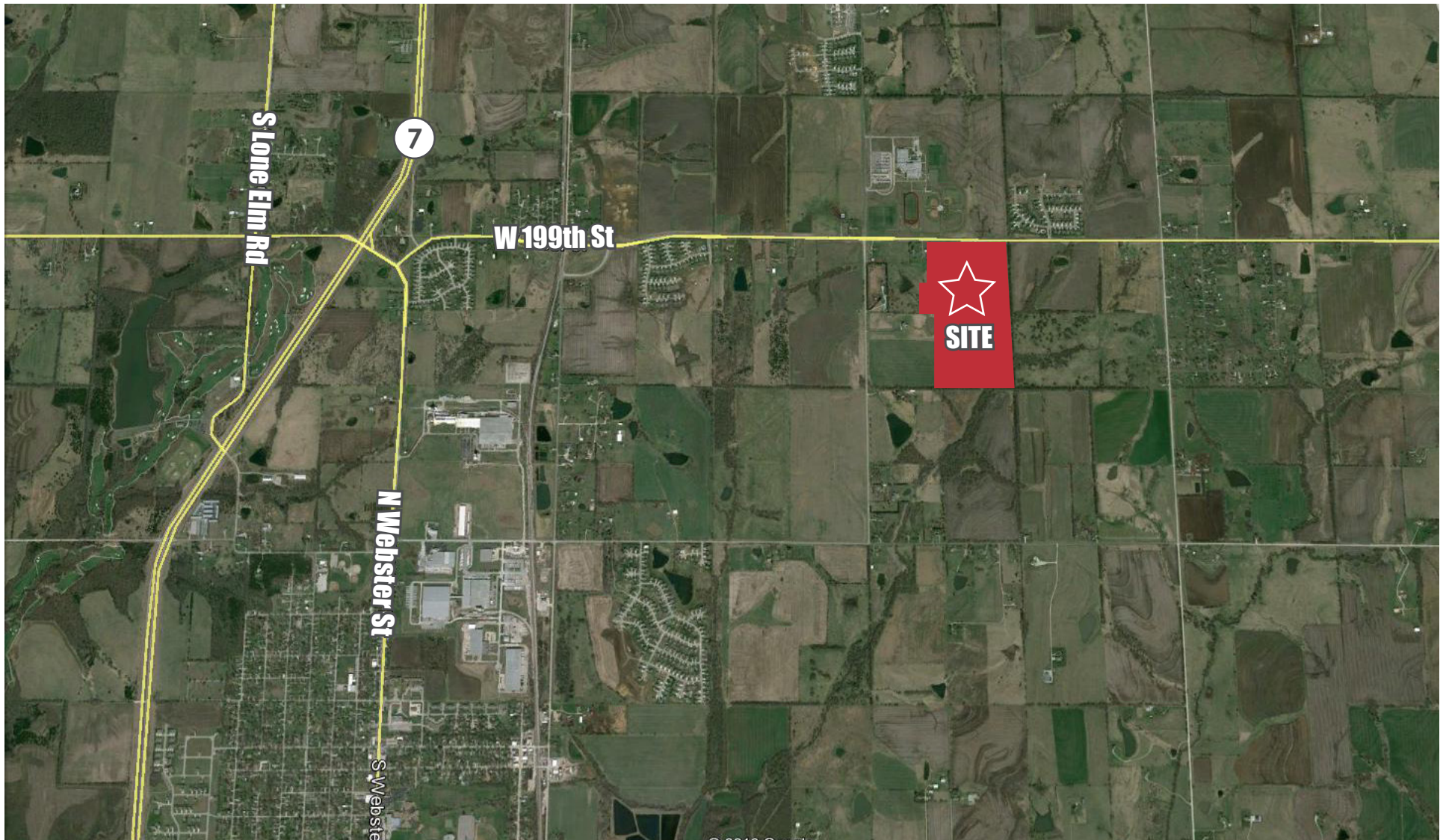
Selling Land & Farms Since 1976

17725 W 199TH ST

LOCATION	Approximately 1/4 mile of frontage on the south side of 199th St, between Ridgeview and Renner Rd
ACRES	Approximately 81.21 acres
PRICE	\$1,786,620 (\$22,000/acre)
USAGE	Master planned for mixed-use residential
UTILITIES	All utilities, including sanitary sewers that run through the site (see attached map)
SCHOOLS	In the Spring Hill school district. The high school is across 199th St on the north side of the property
TAXES	2015 Taxes were \$13,911.43 which includes the sewer special assessments. The special assessment pays off in 2027. (See attached tax statements)
TOPOGRAPHY	See attached topography map

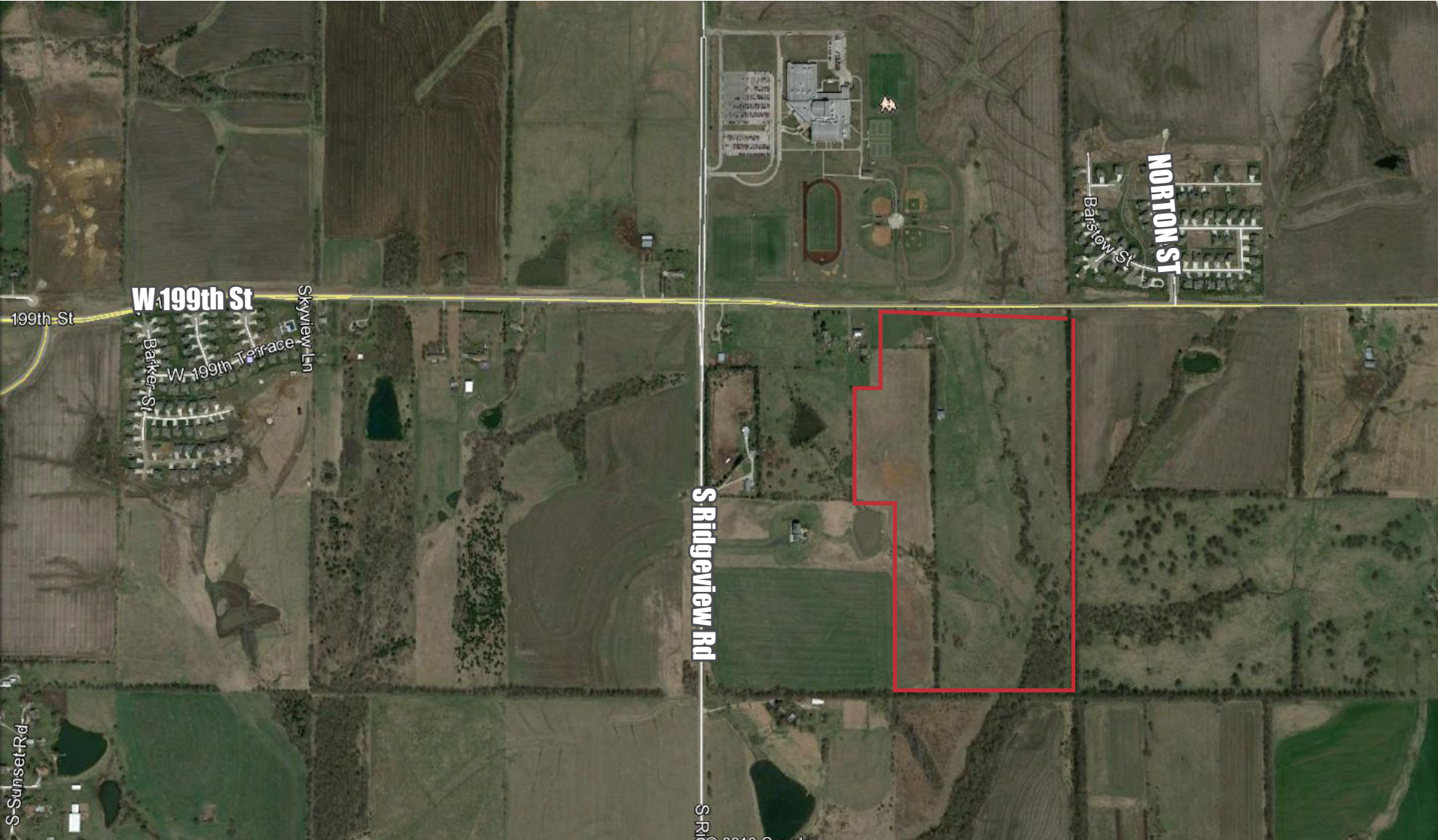
The information in this package has been obtained from sources believed reliable. While we do not doubt its accuracy we have not verified it and make no guarantee, warranty or representation about it. It is your responsibility to independently confirm its accuracy and completeness. Any projections, opinions, assumptions, or estimates used are for example only and do not represent the current or future performance of the property. You and your advisors should conduct a careful, independent investigation of the property to determine to your satisfaction the suitability of the property for your needs. © 2016

AERIAL



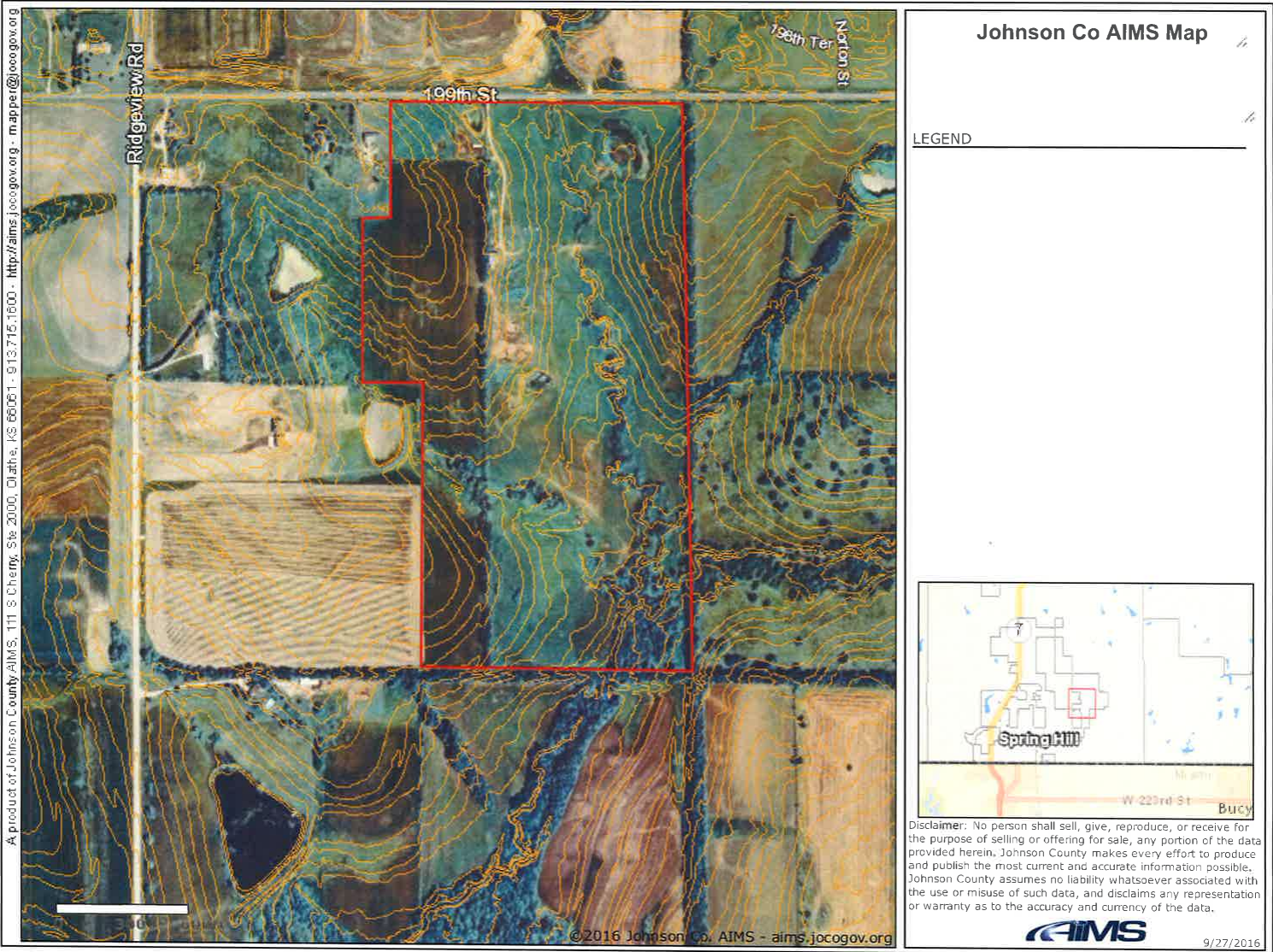
The information in this package has been obtained from sources believed reliable. While we do not doubt its accuracy we have not verified it and make no guarantee, warranty or representation about it. It is your responsibility to independently confirm its accuracy and completeness. Any projections, opinions, assumptions, or estimates used are for example only and do not represent the current or future performance of the property. You and your advisors should conduct a careful, independent investigation of the property to determine to your satisfaction the suitability of the property for your needs. © 2016

AERIAL



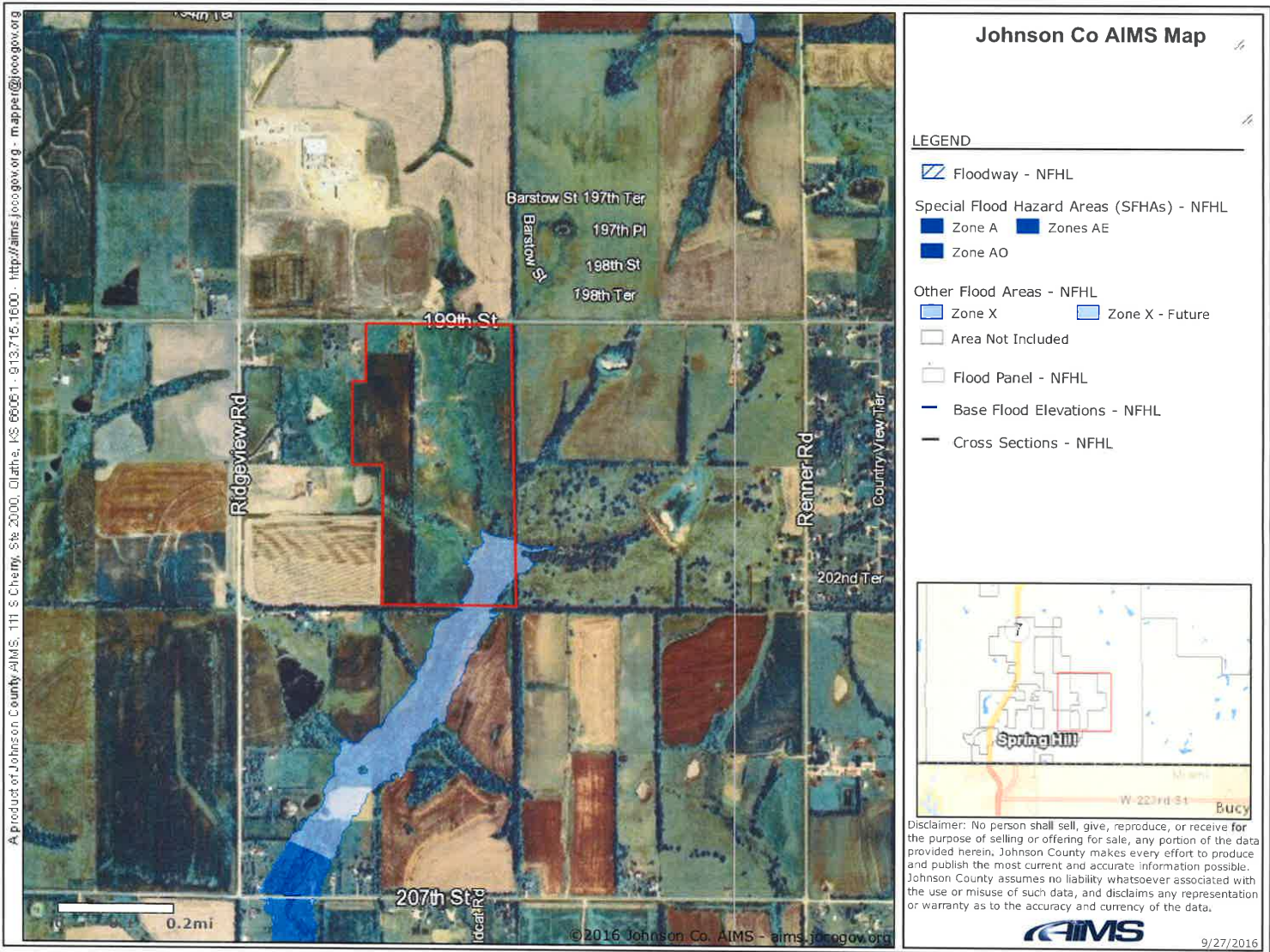
The information in this package has been obtained from sources believed reliable. While we do not doubt its accuracy we have not verified it and make no guarantee, warranty or representation about it. It is your responsibility to independently confirm its accuracy and completeness. Any projections, opinions, assumptions, or estimates used are for example only and do not represent the current or future performance of the property. You and your advisors should conduct a careful, independent investigation of the property to determine to your satisfaction the suitability of the property for your needs. © 2016

TOPOGRAPHY MAP



The information in this package has been obtained from sources believed reliable. While we do not doubt its accuracy we have not verified it and make no guarantee, warranty or representation about it. It is your responsibility to independently confirm its accuracy and completeness. Any projections, opinions, assumptions, or estimates used are for example only and do not represent the current or future performance of the property. You and your advisors should conduct a careful, independent investigation of the property to determine to your satisfaction the suitability of the property for your needs. © 2016

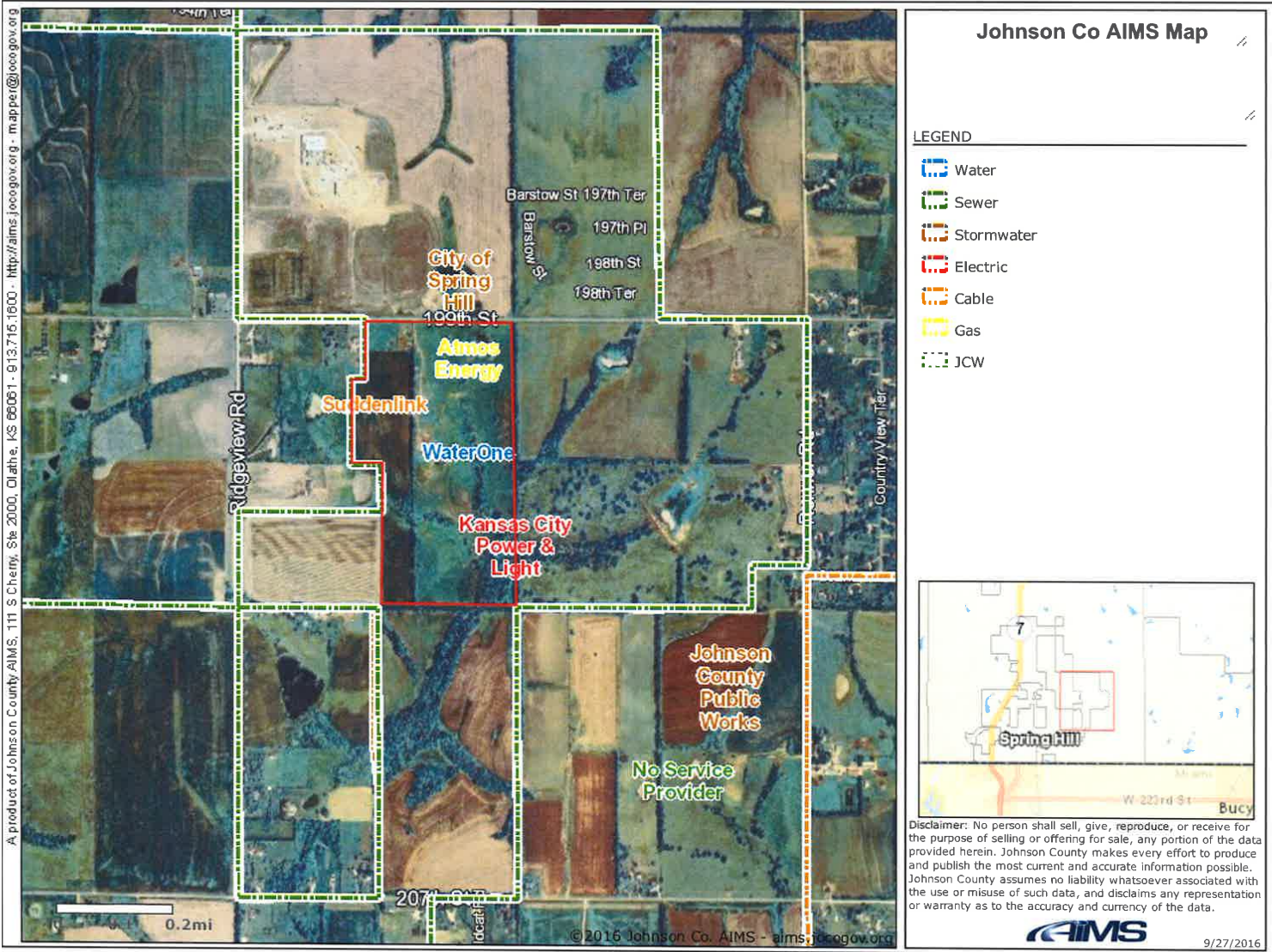
FLOOD MAP



The information in this package has been obtained from sources believed reliable. While we do not doubt its accuracy we have not verified it and make no guarantee, warranty or representation about it. It is your responsibility to independently confirm its accuracy and completeness. Any projections, opinions, assumptions, or estimates used are for example only and do not represent the current or future performance of the property. You and your advisors should conduct a careful, independent investigation of the property to determine to your satisfaction the suitability of the property for your needs. © 2016

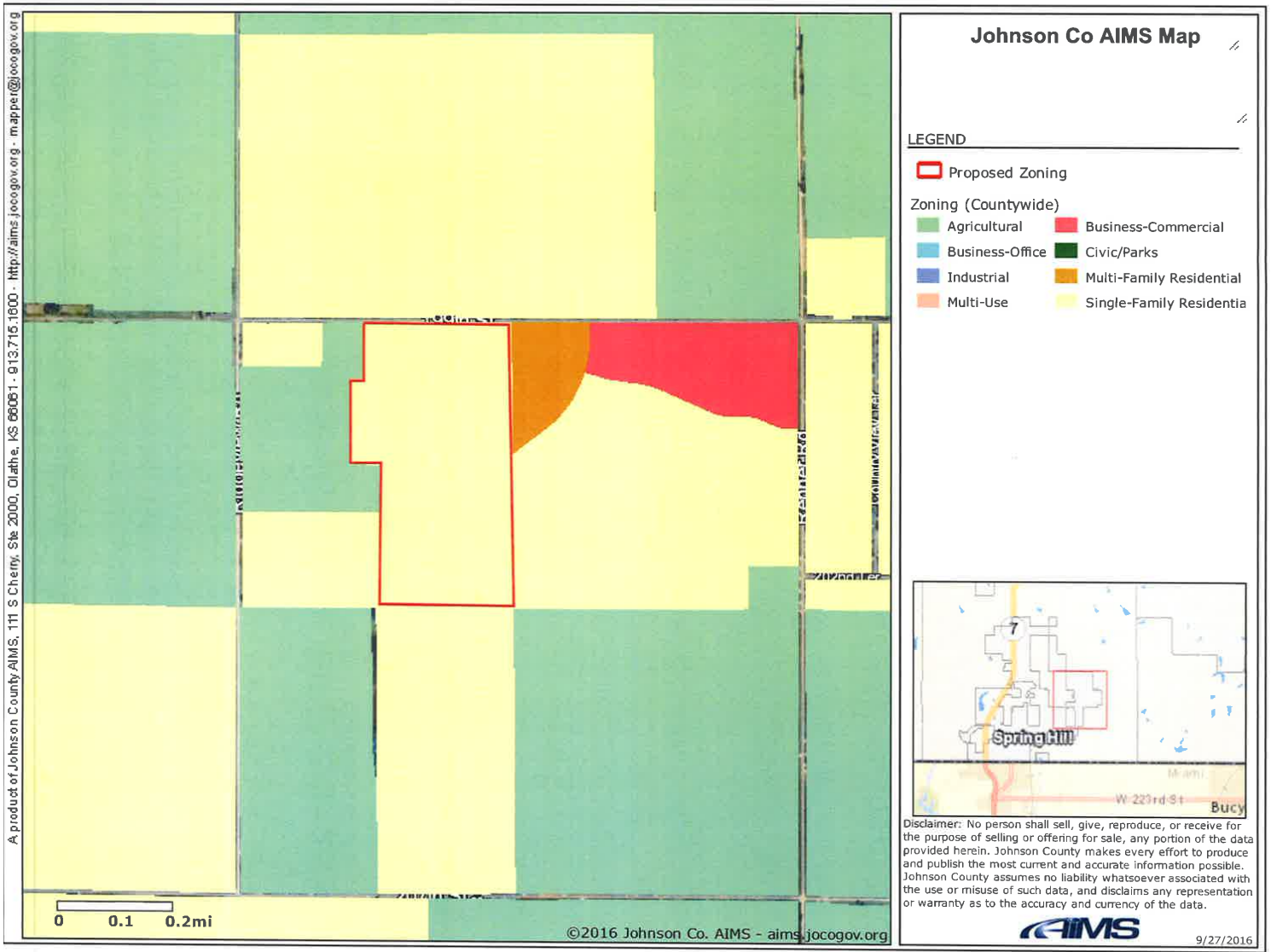


UTILITIES MAP



The information in this package has been obtained from sources believed reliable. While we do not doubt its accuracy we have not verified it and make no guarantee, warranty or representation about it. It is your responsibility to independently confirm its accuracy and completeness. Any projections, opinions, assumptions, or estimates used are for example only and do not represent the current or future performance of the property. You and your advisors should conduct a careful, independent investigation of the property to determine to your satisfaction the suitability of the property for your needs. © 2016

ZONING MAP



The information in this package has been obtained from sources believed reliable. While we do not doubt its accuracy we have not verified it and make no guarantee, warranty or representation about it. It is your responsibility to independently confirm its accuracy and completeness. Any projections, opinions, assumptions, or estimates used are for example only and do not represent the current or future performance of the property. You and your advisors should conduct a careful, independent investigation of the property to determine to your satisfaction the suitability of the property for your needs. © 2016



TAX BILL



Jobs Contact Departments Employees Media County Facilities Maps



Treasury and Financial Management

Locations

Home » Treasury and Financial Management » Real & Personal Property Taxes » RE Tax Bill

THE ACCOUNT DETAILS AND TAX BILL ARE UPDATED NIGHTLY.

INFORMATIONAL PURPOSES ONLY-THIS IS NOT A TAX BILL

Printer Friendly

REAL ESTATE DETAIL

Property Number: EF241507-1001
 Bill Number: 11152317884
 Location: 17725 W 199TH ST
 Tax District: 0424
 Half Tax: \$6,955.72
 Full Tax: \$13,911.43

MILL LEVIES

Tax Authority	Rate	Tax Amount
STATE OF KS	1.5000	6.15
JOHNSON CO	19.5820	86.25
COMM CLGE	9.4690	38.80
JO CO PARK	3.1010	12.71
SP HILL N/F	26.5620	108.86
SP TMP GEN		.00
230 UNIFIED	27.5950	113.08
230 SCH GEN	20.0000	81.96
230 BOND	16.5410	67.79
SP HILL RC	3.0510	12.50
JO CO FIR #2	18.6040	76.24
JO CO LIB	3.9120	16.03
275 SPCNSSDIST1		5,026.10
276 SPCNSSDIST2		8,270.96

TAX SUMMARY

TAX YEAR	2015	AMOUNT PAID	\$13,911.43
HALF DUE	\$0.00	FULL DUE	\$0.00
INTEREST DUE	\$0.00	FEES DUE	\$0.00

PAYMENT HISTORY

Date Paid	Amount Paid	Receipt
12/22/2015	\$13,911.43	View eReceipt

PRINT YOUR TAX BILL ONLINE!



[View eBill](#) | Click here to generate a printable bill.

LEGAL DESCRIPTION

7-15-24 BG NE CR NW1/4 S
 2647.60' TO SE CR W ALG
 S/L
 2541.71' TO SW CR N
 1348.58'
 E 412.10' & 613.76' N
 773.39'
 E 125.01' N 556.73' TO N/L
 E
 1362.53' TO POB EX 39.99
 AC &
 EX .11 AC IN ST 81.21 ACS
 M/L
 SPC 241

PAY YOUR BILL ONLINE!

ASSESSED VALUES

Class Land Improvement

<http://taxbill.jocogov.org/reTaxbill.aspx?parcelID=EF241507-1001%20%20%20&taxYear=2015>

TAXES

The information in this package has been obtained from sources believed reliable. While we do not doubt its accuracy we have not verified it and make no guarantee, warranty or representation about it. It is your responsibility to independently confirm its accuracy and completeness. Any projections, opinions, assumptions, or estimates used are for example only and do not represent the current or future performance of the property. You and your advisors should conduct a careful, independent investigation of the property to determine to your satisfaction the suitability of the property for your needs. © 2016



REECE
 COMMERCIAL REAL ESTATE

a Berkshire Hathaway Affiliate

TAX RECORDS

TAXES

City of Spring Hill North Benefit District 1 Current Repayment Schedule

Property ID: EF24150710-01
Property Owner: No Owner on Record

Account ID: EF24150710-01
Assessment ID:

Bill Date	Interest Rate	Balance	Principal	Interest	Other	Total	Status
08/25/2008	3.2500%	\$65,249.39	\$1,697.24	\$3,253.22	(\$141.00)	\$4,809.46	Billed
08/25/2009	3.2500	63,552.15	2,451.57	2,547.41	141.02	5,140.00	Billed
08/25/2010	3.2500	61,100.58	2,640.15	2,467.74	0.01	5,107.90	Billed
08/25/2011	3.5000	58,460.43	2,640.15	2,381.93	0.00	5,022.08	Billed
08/25/2012	3.5000	55,820.28	2,451.57	2,289.53	0.00	4,741.10	Billed
08/25/2013	3.5000	53,368.71	2,640.15	2,203.72	0.01	4,843.88	Billed
08/25/2014	3.6250	50,728.56	2,828.73	2,111.32	0.01	4,940.06	Billed
08/25/2015	3.7500	47,899.83	3,017.31	2,008.78	0.01	5,026.10	Billed
08/25/2016	5.0000	44,882.52	3,017.31	1,895.63	0.00	4,912.94	Billed
08/25/2017	5.0000	41,865.21	3,017.31	1,744.76	0.00	4,762.07	Unbilled
08/25/2018	4.0000	38,847.90	3,205.89	1,593.90	0.00	4,799.79	Unbilled
08/25/2019	4.0000	35,642.01	3,205.90	1,465.66	0.00	4,671.56	Unbilled
08/25/2020	4.0000	32,436.11	3,394.48	1,337.42	0.00	4,731.90	Unbilled
08/25/2021	4.0000	29,041.63	3,583.06	1,201.64	0.00	4,784.70	Unbilled
08/25/2022	4.0000	25,458.57	3,771.64	1,058.32	0.00	4,829.96	Unbilled
08/25/2023	4.1000	21,686.93	3,960.22	907.46	0.00	4,867.68	Unbilled
08/25/2024	4.1000	17,726.71	4,148.80	745.09	0.00	4,893.89	Unbilled
08/25/2025	4.2000	13,577.91	4,337.39	574.99	0.00	4,912.38	Unbilled
08/25/2026	4.2000	9,240.52	4,525.97	392.82	0.00	4,918.79	Unbilled
08/25/2027	4.3000	4,714.55	4,714.55	202.73	0.00	4,917.28	Unbilled
Grand Total:			\$65,249.39	\$32,384.07	\$0.06	\$97,633.52	

The information in this package has been obtained from sources believed reliable. While we do not doubt its accuracy we have not verified it and make no guarantee, warranty or representation about it. It is your responsibility to independently confirm its accuracy and completeness. Any projections, opinions, assumptions, or estimates used are for example only and do not represent the current or future performance of the property. You and your advisors should conduct a careful, independent investigation of the property to determine to your satisfaction the suitability of the property for your needs. © 2016



TAX RECORDS

TAXES

City of Spring Hill North Benefit District 2 Current Repayment Schedule

Property ID: EF24150710-01

Account ID: EF24150710-01XX

Property Owner: No Owner on Record

Assessment ID:

Bill Date	Interest Rate	Balance	Principal	Interest	Other	Total	Status
08/25/2008	3.2500%	\$102,142.31	\$2,053.11	\$5,089.63	\$361.42	\$7,504.16	Billed
08/25/2009	3.2500	100,089.20	3,592.95	4,004.98	-361.37	7,236.56	Billed
08/25/2010	3.2500	96,496.25	4,106.22	3,888.21	0.01	7,994.44	Billed
08/25/2011	3.5000	92,390.03	4,106.22	3,754.76	0.00	7,860.98	Billed
08/25/2012	3.5000	88,283.81	4,619.50	3,611.04	0.00	8,230.54	Billed
08/25/2013	3.5000	83,664.31	4,106.22	3,449.36	0.00	7,555.58	Billed
08/25/2014	3.6250	79,558.09	4,619.50	3,305.64	0.00	7,925.14	Billed
08/25/2015	3.7500	74,938.59	5,132.78	3,138.18	0.00	8,270.96	Billed
08/25/2016	5.0000	69,805.81	4,619.50	2,945.70	0.00	7,565.20	Billed
08/25/2017	5.0000	65,186.31	4,619.50	2,714.73	0.00	7,334.23	Unbilled
08/25/2018	4.0000	60,566.81	5,132.78	2,483.75	0.00	7,616.53	Unbilled
08/25/2019	4.0000	55,434.03	4,619.50	2,278.44	0.00	6,897.94	Unbilled
08/25/2020	4.0000	50,814.53	5,646.06	2,093.66	0.00	7,739.72	Unbilled
08/25/2021	4.0000	45,168.47	5,646.06	1,867.82	0.00	7,513.88	Unbilled
08/25/2022	4.0000	39,522.41	6,159.34	1,641.98	0.00	7,801.32	Unbilled
08/25/2023	4.1000	33,363.07	6,159.34	1,395.60	0.00	7,554.94	Unbilled
08/25/2024	4.1000	27,203.73	6,672.61	1,143.07	0.00	7,815.68	Unbilled
08/25/2025	4.2000	20,531.12	6,672.61	869.49	0.00	7,542.10	Unbilled
08/25/2026	4.2000	13,858.51	6,672.62	589.24	0.00	7,261.86	Unbilled
08/25/2027	4.3000	7,185.89	7,185.89	308.99	0.00	7,494.88	Unbilled
Grand Total:			\$102,142.31	\$50,574.27	\$0.06	\$152,716.64	

The information in this package has been obtained from sources believed reliable. While we do not doubt its accuracy we have not verified it and make no guarantee, warranty or representation about it. It is your responsibility to independently confirm its accuracy and completeness. Any projections, opinions, assumptions, or estimates used are for example only and do not represent the current or future performance of the property. You and your advisors should conduct a careful, independent investigation of the property to determine to your satisfaction the suitability of the property for your needs. © 2016

