

# CONVERGENCE - BLDG 1

*2501 S. STATE HIGHWAY 121 BUSINESS  
LEWISVILLE, TEXAS 75067*



DIGITAL REALTY

**163,739 RSF**  
**AVAILABLE FOR LEASE**

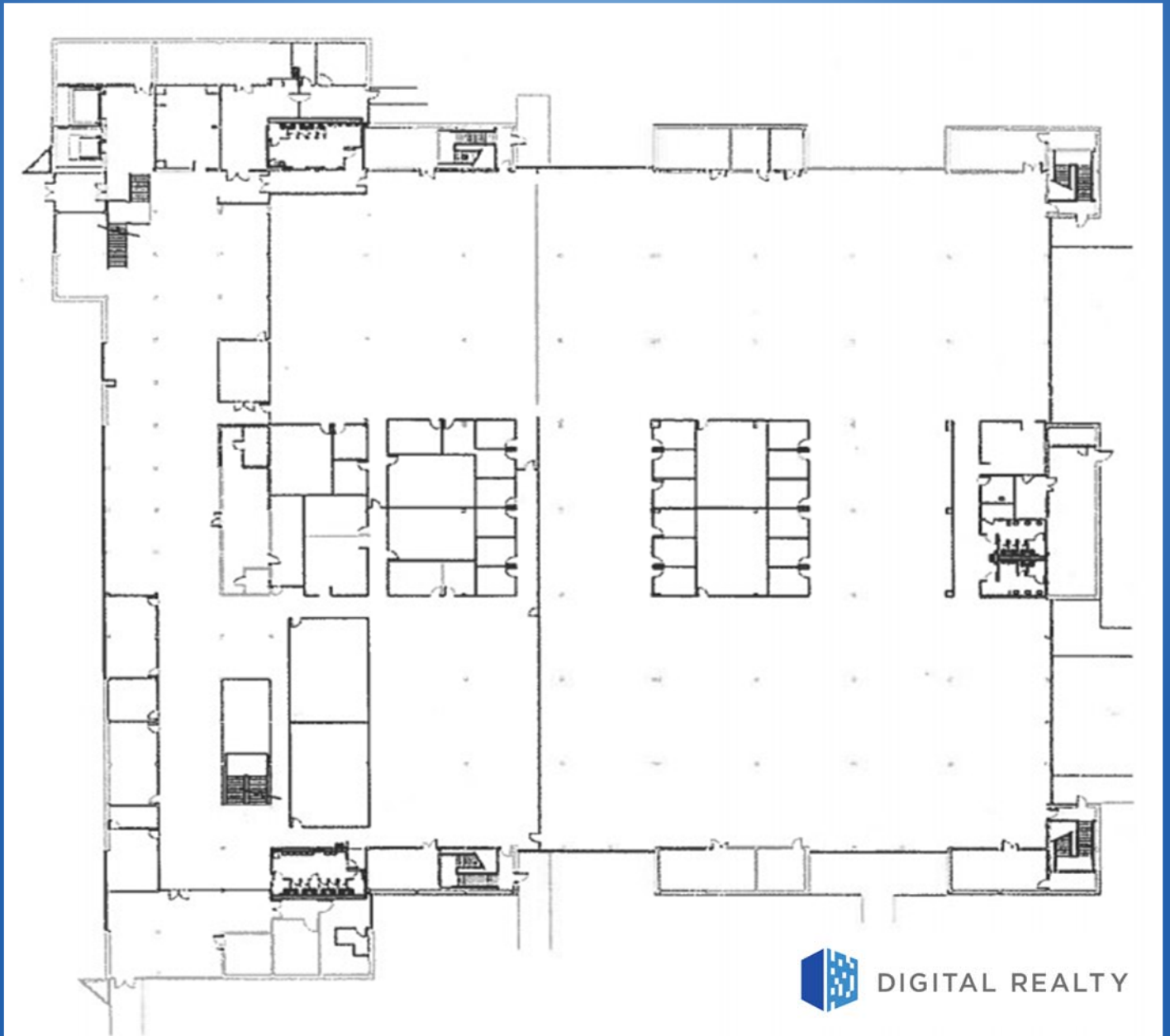




# CONVERGENCE – BLDG 1

*2501 S. STATE HIGHWAY 121 BUSINESS  
LEWISVILLE, TEXAS 75067*

**1<sup>ST</sup> FLOOR – 83,467 RSF**

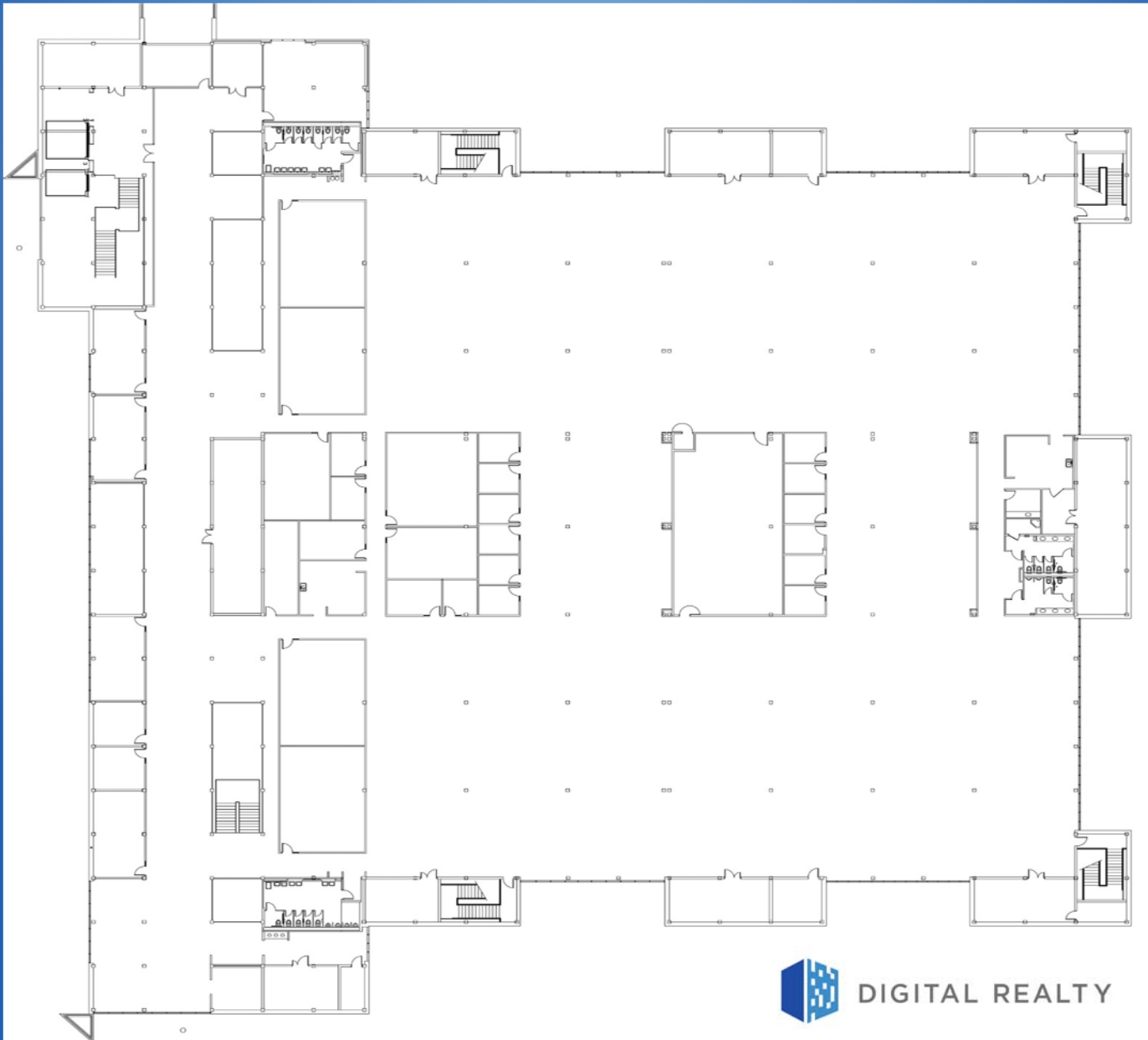




# CONVERGENCE – BLDG 1

*2501 S. STATE HIGHWAY 121 BUSINESS  
LEWISVILLE, TEXAS 75067*

**2<sup>ND</sup> FLOOR – 80,272 RSF**





# CONVERGENCE – BLDG 1

*2501 S. STATE HIGHWAY 121 BUSINESS  
LEWISVILLE, TEXAS 75067*

## INTERIOR PHOTOS



**DIGITAL REALTY**

FOR LEASING INFORMATION

Bob Buell

[bob.buell@fults.com](mailto:bob.buell@fults.com)

Louie Weber

[louis.weber@fults.com](mailto:louis.weber@fults.com)

**FULTS**  
fults.com | 972.503.5100