

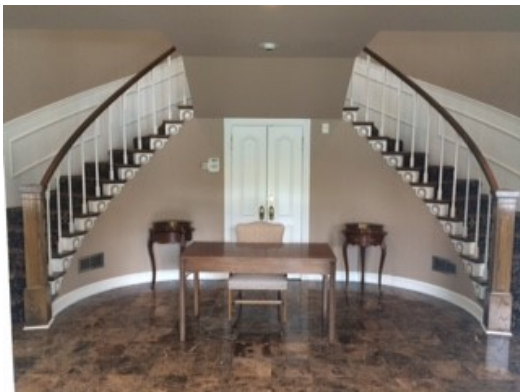
1400 PRUDENTIAL DRIVE
JACKSONVILLE, FL 32207



OFFICE SPACE FOR LEASE

Property Features

- Convenient South Bank Location
- Easy Access to I-10 and I-95
- Large Offices, Plus Reception
- Private Bathroom and Bar
- Centralized Conf. Room Available To All Tenants
- Walking Distance To Nearby Restaurants
- Convenient Ground Level Parking
- No CAM



SPACE AVAILABLE	799-1,016 SF
BUILDING SIZE	7,600 SF
PROPERTY TYPE	OFFICE
BUILDING CLASS	A

For Further Information, Contact:

Stephanie Dixon

Office: 904-396-1600

Email: Stephanie@HsTurner.com

www.hsturner.com

H.S.Turner, Inc. | 1400 Prudential Dr. | Suite 7 | Jacksonville, FL 32207