

4 albemarle street, w1

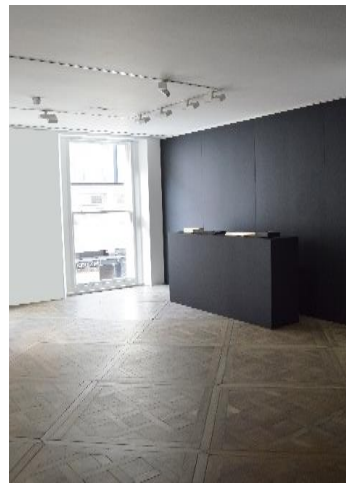
stylish mayfair b1 office /gallery space

with the benefit of a flag pole

interior designed gallery space with high ceilings, volume & light

2,900 approx

for rent



the building is close to the corner of piccadilly and albemarle street

the arts club, wolsley, gymkhana + marlborough gallery are all close by. the closest transport links are green park, bond street and piccadilly underground stations.

HERSHMAN



PILCHER

8600



020 7399

TELEPHONE



PILCHER  HERSHMAN

020 7399  8600

TELEPHONE

accommodation

1st floor 2,900 sq ft approx.

amenities

- timber parquet flooring
- erco lighting system
- high ceilings of c 3.5m slab to slab
- passenger lift
- kitchenette
- impressive full height windows.
- private wc's
- access 24/7/365
- commissionaire
- flagpole
- air conditioning

passing rent

£305,000 per annum exclusive

premium

offers sought for our clients fixtures & fittings

lease

an assignment of our clients lease for a term expiring 24th december 2023, contracted outside the 1954 landlord + tenant act.

legal costs

each party to bear their own legal costs

viewing via sole agents

pilcher hershman
simon rinder/julian wogman
020 7399 8600

HERSHMAN



PILCHER

00

00

8600

8600



7399

7399

8600

8600

TELEPHONE