



750 Dawson Dr.

Newark, Delaware 19713

Property Features

- Size: +/- 60,000 sf
- Land: +/- 2.31 Acres
- Zoning: I – Industrial
- Loading: 8 docks
- Convenient location with easy access to I-95, Rt 1 and Rt 40



For more information:

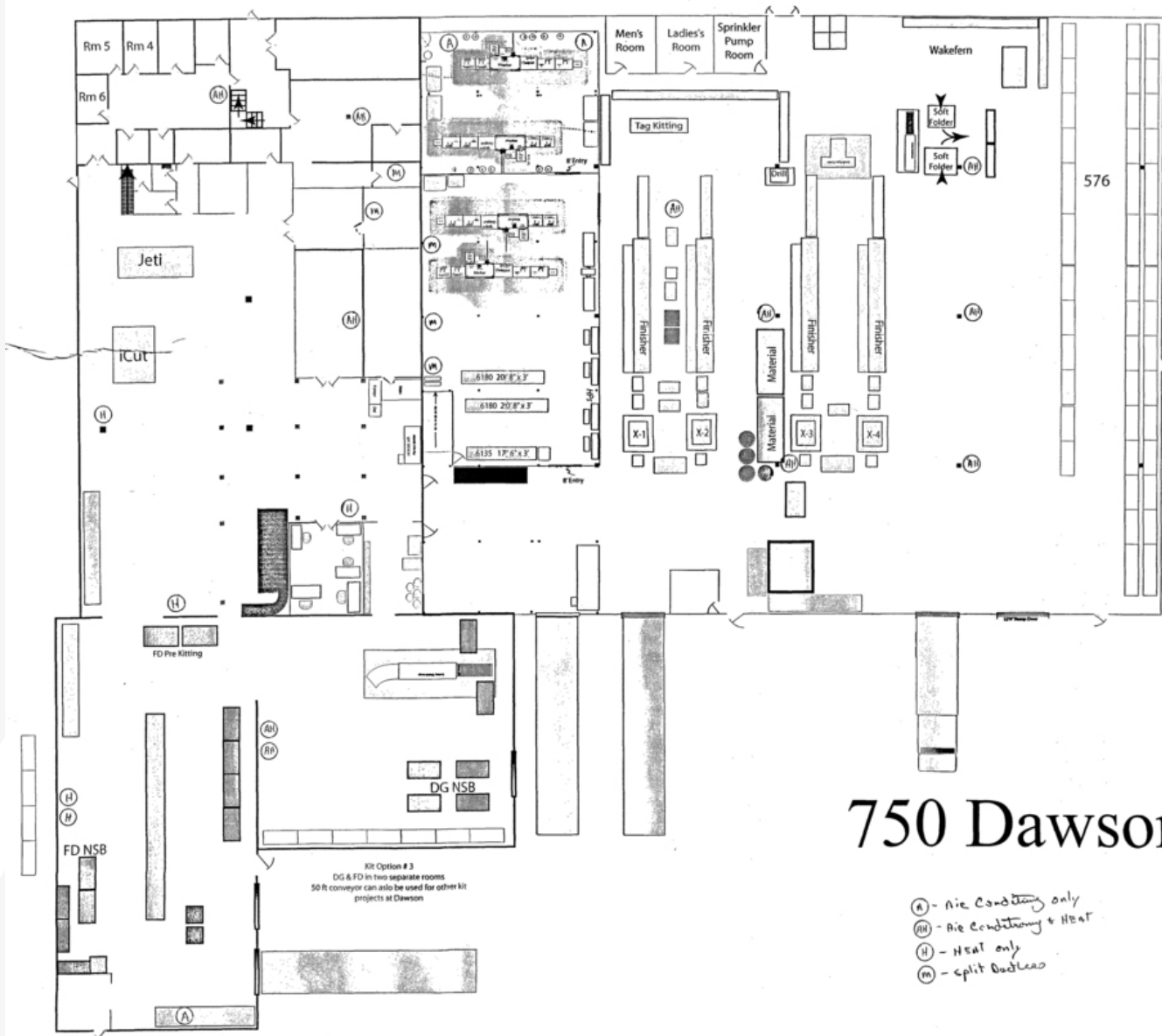
Jim O'Hara, Jr.

302 322 9500 • C: 302 584 1632 • jimohara@emoryhill.com

For Lease
Industrial



For Lease Industrial



750 Dawson Dr

- Ⓐ - A/c Conditioning only
- ⒶH - A/c Conditioning + HEAT
- Ⓜ - HEAT only
- Ⓜ - split ductless

