

Office Building
Available



Kissimmee Office/ Industrial
1216 W. Patrick Street
Kissimmee, FL 34741

MARTIN FORSTER, CCIM
mforster@holdthyssen.com

M: 321-299-4164
T: 407-691-0505

JOELLE FORSTER
jforster@holdthyssen.com

M: 407-491-1702
T: 407-691-0505

www.holdthyssen.com



Total Size
7,435 RSF



15 Parking Spaces
Available






Built in 1997

- Building freshly refurbished
- New roof
- New A/C throughout
- New flooring
- New energy efficient lighting
- New restrooms
- Partially furnished downstairs
- Base Rent \$14.00 per s.f. NNN
- Passthroughs approx. \$4.00 per s.f.



Reception/ Waiting area, looking from front door

Demographics

	1-mile	3-mile	5-mile
Population			
 2023 Projection	7,966	71,301	174,655
2018 Estimate	6,941	61,278	150,551
2010 Census	6,549	51,087	125,205
Growth 2018-2023	14.77%	16.36%	16.01%
Growth 2010-2018	5.99%	19.95%	20.24%
Households			
 2023 Projection	2,731	25,204	58,315
2018 Estimate	2,398	21,810	50,619
2010 Census	2,290	18,431	42,818
Growth 2018 - 2023	13.89%	15.56%	15.20%
Growth 2010 - 2018	4.72%	18.33%	18.22%
Income			
 2018 Avg Household Income	\$45,608	\$52,533	\$59,492
2018 Med Household Income	\$34,050	\$40,942	\$47,807

1216 W. Patrick Street | Kissimmee, FL



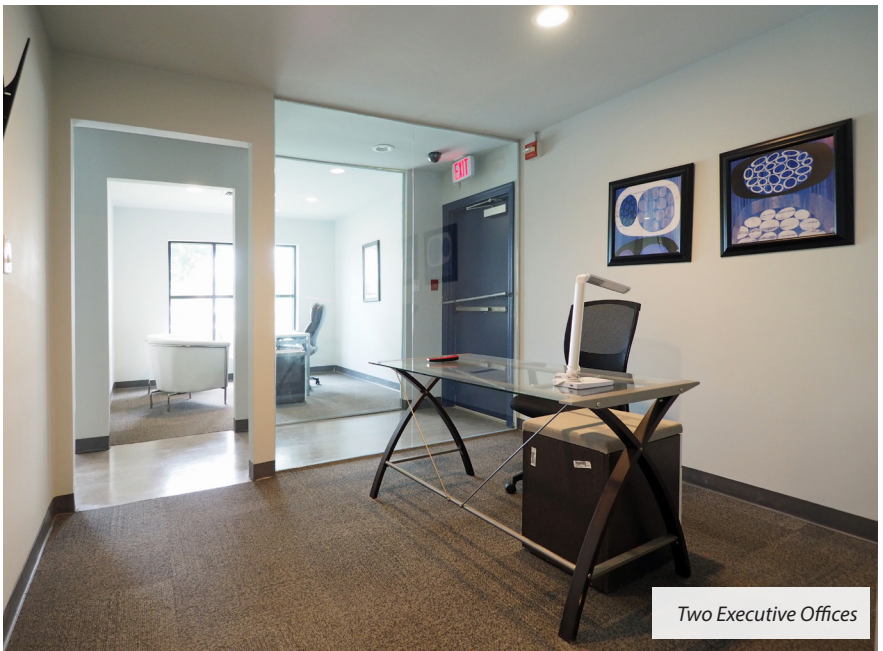
30 minutes away from
MCO Airport



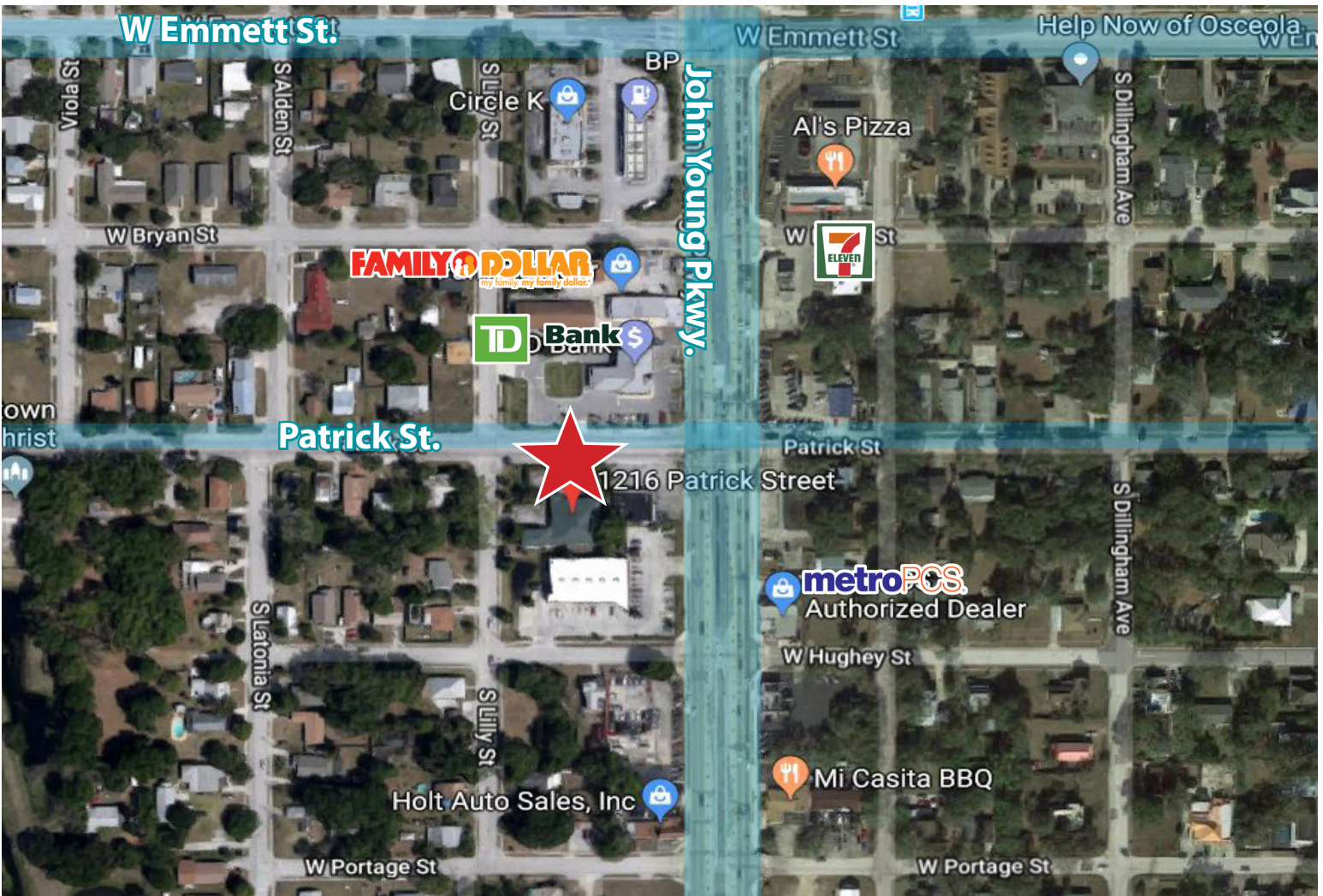
Asking Price
\$14/SF NNN



Corridor with Offices either side



Two Executive Offices



1216 W. Patrick Street | Kissimmee, FL



FOR MORE INFORMATION:

MARTIN FORSTER, CCIM
mforster@holdthyssen.com

M: 321-299-4164
T: 407-691-0505

JOELLE FORSTER
jforster@holdthyssen.com

M: 407-491-1702
T: 407-691-0505

301 S. New York Avenue
Suite 200
Winter Park, FL 32789



www.holdthyssen.com

The information above has been obtained from sources believed reliable. While we do not doubt its accuracy we make no guarantee, warranty or representation about it. It is your responsibility to independently confirm its accuracy and completeness. Any projections, opinions, assumptions, or estimates used are for example only and do not represent the current or future performance of the property. Hold-Thyssen, Inc. is a licensed real estate broker.