



966
HOUSTON
NORTHCUTT BLVD.

**FOR
LEASE**

2,750 SF
OFFICE SPACE
AVAILABLE

LEE & ASSOCIATES
COMMERCIAL REAL ESTATE SERVICES



PETE HARPER, CCIM
Principal
(843) 329-0108
PHarper@Lee-Associates.com



REID DAVIS, CCIM, SIOR
Managing Principal
(843) 277-4326
RDavis@Lee-Associates.com



CAMERON YOST, CCIM, SIOR
Principal
(843) 203-1105
CYost@Lee-Associates.com

PROPERTY OVERVIEW

Bridgewater Center is located on the busy cross street on Houston Northcutt Boulevard between Coleman Boulevard and Johnnie Dodds Boulevard. Available immediately Suite H is an end cap opportunity with 2,750 SF. Currently built out as a medical office with multiple treatment/consultation rooms, a large reception area, a break-room, and a work area. The diverse tenant mix includes Jimmy John's, Elite Escape Games, Edward Jones, and several others. Rate is NNN with the expenses estimated at \$10.11/SF for 2023.



ADDRESS

966 Houston Northcutt Blvd.
Mount Pleasant, SC 29464

TMS

517-00-00-241

LEASE RATE

\$30.00/SF, NNN
(NNN = \$10.11/SF)

SPACE AVAILABLE

Suite H: 2,750 SF

PARKING & ACCESS

Plenty of Surface Parking
Spaces Available

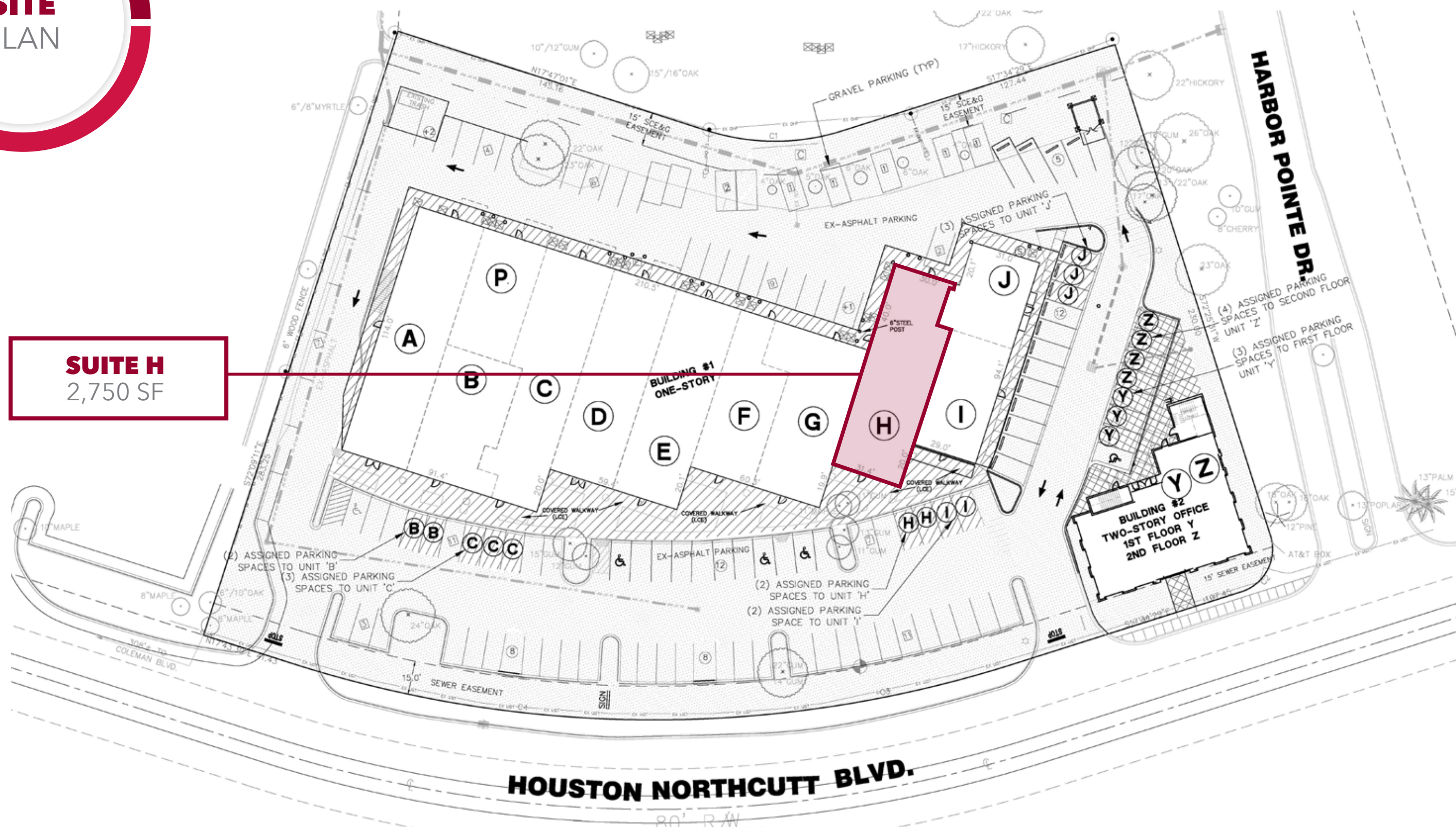
YEAR BUILT

1987



SITE PLAN

SUITE H
2,750 SF

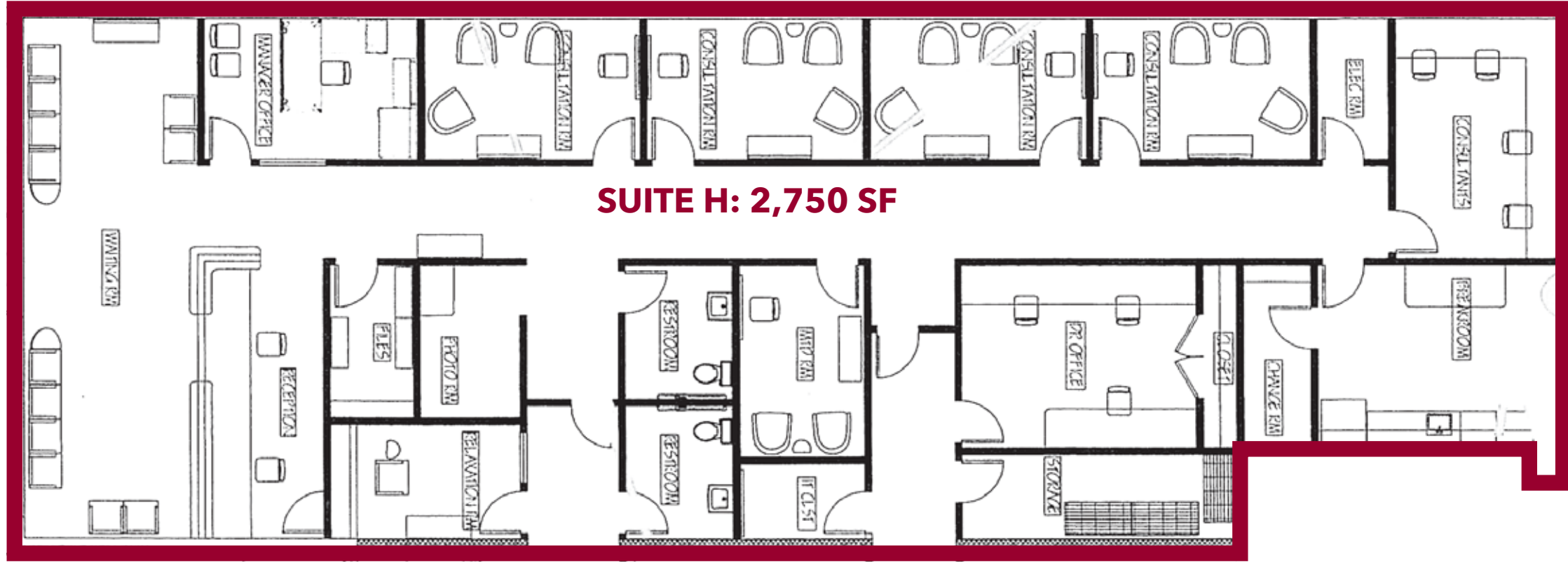


HOUSTON NORTHCUTT BLVD.

HARBOR POINTE DR.

**FRONT ENTRANCE ON
HOUSTON NORTHCUTT BLVD.**

FLOOR PLAN

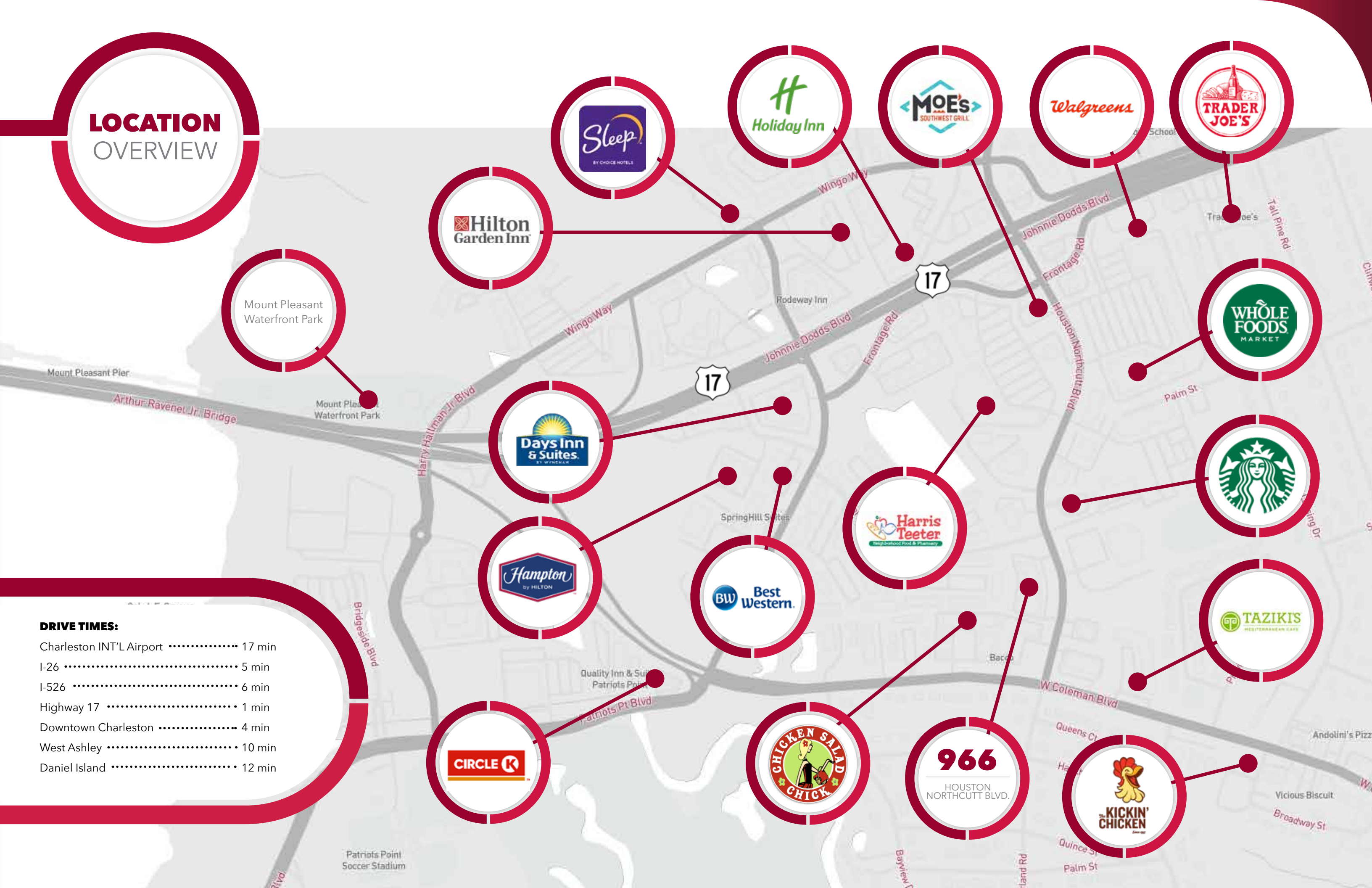


LOCATION OVERVIEW

Mount Pleasant Waterfront Park

DRIVE TIMES:

Charleston INT'L Airport	17 min
I-26	5 min
I-526	6 min
Highway 17	1 min
Downtown Charleston	4 min
West Ashley	10 min
Daniel Island	12 min



MARKET OVERVIEW

966

HOUSTON
NORTHCUTT BLVD.

114,261

TOTAL POPULATION
WITHIN 5 MILES

48,662

HOUSEHOLDS
WITHIN 5 MILES

37.8

MEDIAN AGE
WITHIN 5 MILES

7,625

TOTAL BUSINESSES
WITHIN 5 MILES

\$126,022

AVG. HH INCOME
WITHIN 5 MILES

163,913

TOTAL DAYTIME POP.
WITHIN 5 MILES

966

HOUSTON
NORTHCUTT BLVD.
CHARLESTON, SC 29464



PETE HARPER, CCIM

Principal
(843) 329-0108
PHarper@Lee-Associates.com



REID DAVIS, CCIM, SIOR

Managing Principal
(843) 277-4326
RDavis@Lee-Associates.com



CAMERON YOST, CCIM, SIOR

Principal
(843) 203-1105
CYost@Lee-Associates.com

All information furnished regarding property for sale, rental or financing is from sources deemed reliable, but no warranty or representation is made to the accuracy thereof and same is submitted to errors, omissions, change of price, rental or other conditions prior to sale, lease or financing or withdrawal without notice. No liability of any kind is to be imposed on the broker herein.