

SELF-CONTAINED BUILDING TO LET

## 51 Berkeley Square

Mayfair, London W1J



The building is located on the South West corner of Berkeley Square close to its junction with Charles Street. Green Park, Bond Street and Hyde Park Corner underground stations are all within close proximity giving access to the Victoria, Piccadilly, Jubilee and Central lines.

**Sophie Huberman**  
020 7079 2509  
[sh@metrus.co.uk](mailto:sh@metrus.co.uk)

**Joshua Milan**  
020 7079 3974  
[jm@metrus.co.uk](mailto:jm@metrus.co.uk)

# SELF-CONTAINED BUILDING TO LET IN MAYFAIR **metrus**

## Accommodation

The building provides a mixture of ornate period and contemporary office space and is fitted out to a high standard. The accommodation benefits from full air conditioning, a passenger lift and stunning views over Berkeley Square.

The property is available by way of an assignment or sublease of our clients Fully Repairing and Insuring lease for a term to be agreed.

## Transport Links

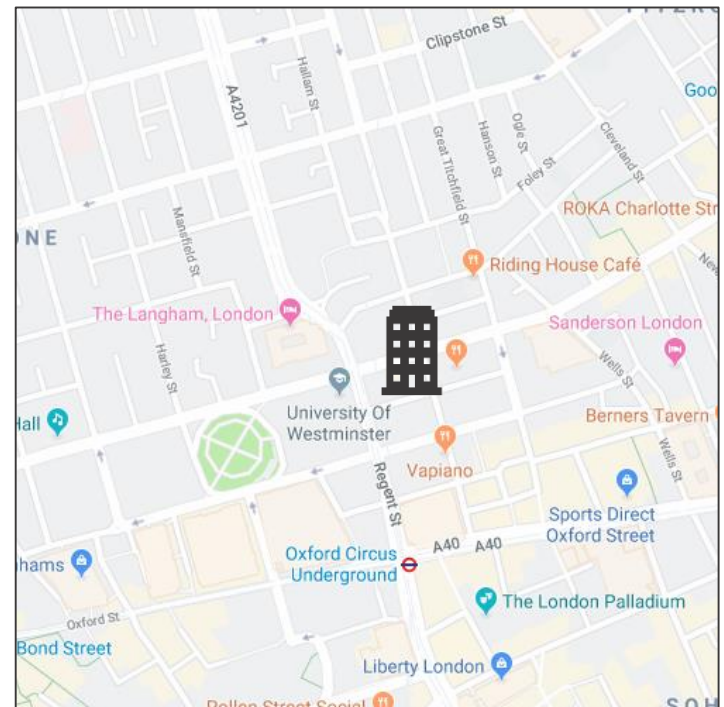
- Green Park Underground Station ●●●
- Bond Street Underground Station ●●
- Oxford Circus Underground Station ●●●
- Piccadilly Circus Underground Station ●●
- Hyde Park Corner Underground Station ●

## Features

- Self-contained
- Fitted out to a high standard
- 8 person passenger lift
- Terrace access
- 14 man boardroom
- Designated reception area
- Air-conditioning
- Period features
- Large kitchen with breakout area
- Shower facilities
- Option to buy the existing furniture

	51 Berkeley Square	51 Hay's Mews
Floor	Size (Sq Ft)	Size (Sq Ft)
Garage		2 car parking spaces
Basement	857	964
Ground	741	968
First	1,043	864
Second	1,049	765
Third	1,074	464
Fourth	1,035	
<b>Sub-Totals</b>	<b>5,799</b>	<b>4,025</b>
<b>Total</b>	<b>9,824 Sq Ft (NIA)</b>	

EPC – available upon request



## Contact Us

METRUS  
[www.metrus.co.uk](http://www.metrus.co.uk)  
 020 7079 3976  
[agencygroup@metrus.co.uk](mailto:agencygroup@metrus.co.uk)

**in** [linkedin.com/company/metrus-property-advisors](https://www.linkedin.com/company/metrus-property-advisors)

**tw** [@MetrusProperty](https://twitter.com/MetrusProperty)

**ig** [Metrus\\_Property](https://www.instagram.com/Metrus_Property)

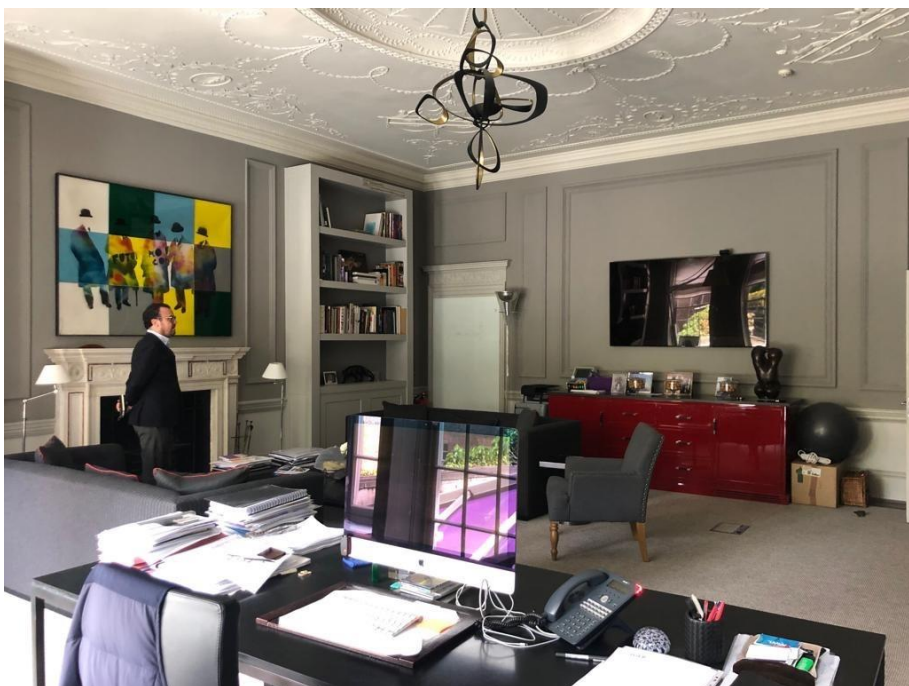
**Sophie Huberman**  
 020 7079 2509  
[sh@metrus.co.uk](mailto:sh@metrus.co.uk)

**Joshua Milan**  
 020 7079 3974  
[jm@metrus.co.uk](mailto:jm@metrus.co.uk)

**Robin Lester**  
 020 7079 2494  
[rl@metrus.co.uk](mailto:rl@metrus.co.uk)



# SELF-CONTAINED BUILDING TO LET IN MAYFAIR **metrus**



Metrus Limited for themselves and for the Vendors or Lessors of this property whose agents they are given notice that: all descriptions, dimensions, reference to condition and necessary permissions for use and occupation and other details are unless otherwise stated indicative only. Any intending purchasers or tenants should not rely on them as statements or representations of fact or as warranties but must satisfy themselves by inspection or otherwise as to the correctness of each of them. Any services mentioned have not been tested and therefore prospective occupiers should satisfy themselves as to their operation. These particulars are produced in good faith and set out a general guide only and do not constitute part of any offer or contract. No person in the employment of Metrus Limited has any authority to make or give representation or warranty in relation to this property. All prices and rents are quotes exclusive of VAT unless otherwise stated.