



DANTZIC

NOMA | MANCHESTER

NOMA



4,790 SQ FT – 42,782 SQ FT
GREAT CREATIVE OFFICE SPACE
IN ONE OF NOMA'S HISTORIC
WAREHOUSE BUILDINGS





LOCATION



- Angel Meadow Park
- Angel Gardens (2019)
- One Angel Square
- The Northern Quarter
- Manchester Piccadilly Station
- Shudehill Transport Interchange
- Sadler's Yard
- 
- The Printworks
- Manchester Victoria Station
- National Football Museum
- Manchester Arndale
- Exchange Square
- The Corn Exchange
- Manchester Town Hall
- Manchester Cathedral
- Manchester Arena
- Royal Exchange Theatre
- Manchester Central
- Beetham Tower
- Spinningfields

Manchester is the largest and fastest growing regional capital in the UK, with 80 members of the FTSE 100 already based here.

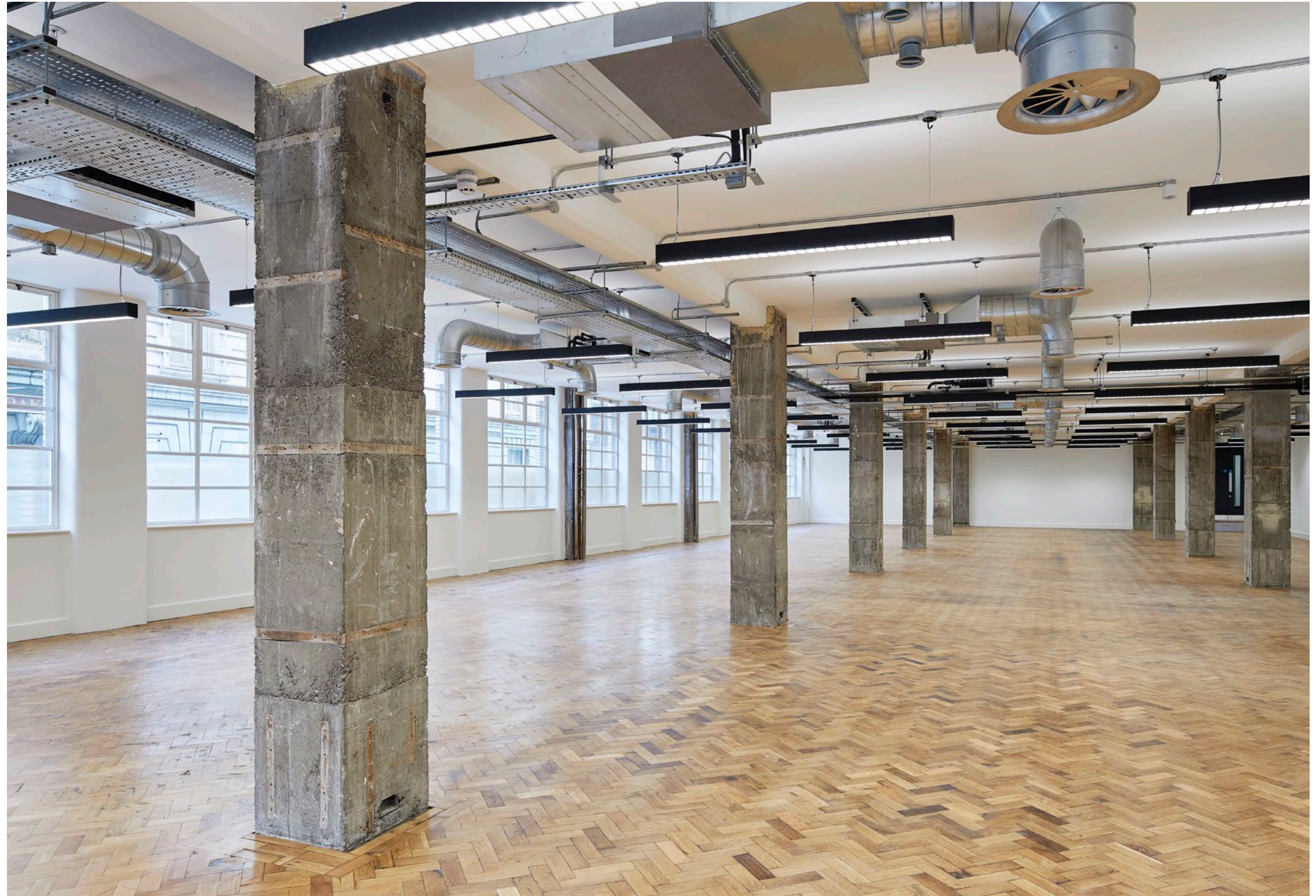
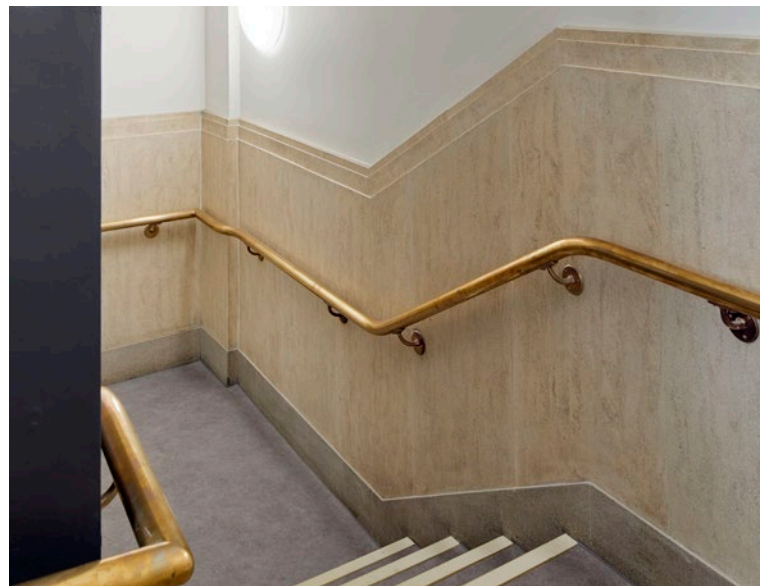
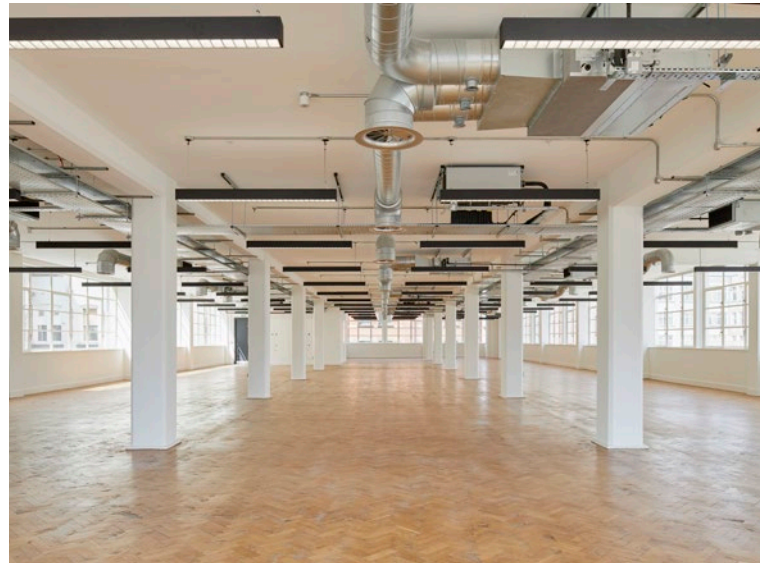
The 20-acre (8.08 hectare) NOMA scheme is situated between the city centre's largest park (Angel Meadow), the main shopping and leisure destination (the Manchester Arndale Centre and Exchange Square) and two major transport hubs (Manchester Victoria Station and the Shudehill Transport Interchange).



Adjoining Federation, Dantzig is a fine example of art deco design and comprises six upper floors of unique workspace with real character.

For businesses with the ambition to try something different, Dantzig provides an environment that invigorates the mind and challenges the conventional.





SPECIFICATION

- Open plan blank canvas work space
- New reception design
- Original parquet flooring
- Exposed soffit and original ceiling detailing
- LCD feature pendant lighting
- Two new passenger lifts
- New w/c and shower facilities
- Natural ventilation through new openable double-glazed windows
- VRF heating and cooling
- Cycle storage facilities
- EPC C rating
- Set to achieve BREEAM 'Very Good'
- Wirescore 'Platinum' connectivity rating





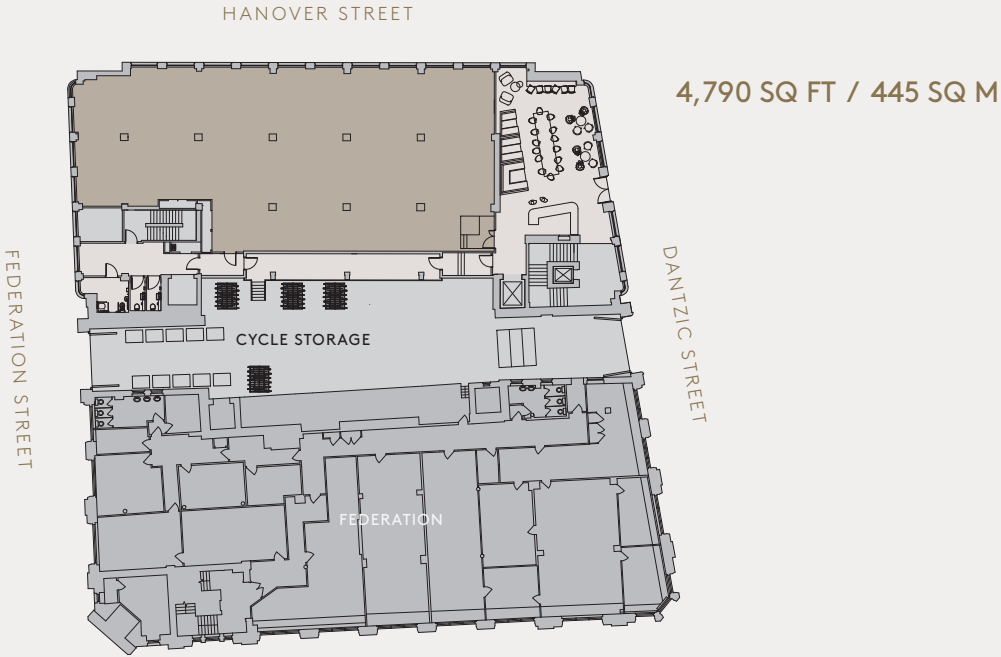


SCHEDULE OF AREAS

OFFICES	NIA (SQ FT)	NIA (SQ M)
Sixth floor	5,594	520
Fifth floor	6,006	558
Fourth floor	6,598	613
Third floor	6,598	613
Second floor	6,598	613
First floor	6,598	613
Ground floor	4,790	445
Total offices	42,782	3,975

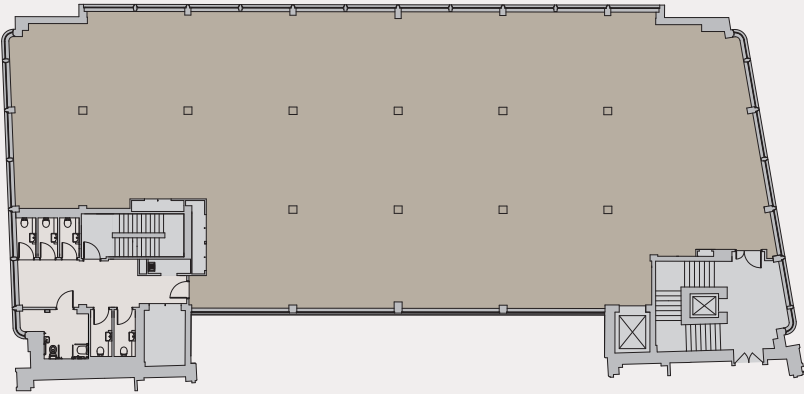
FLOOR PLANS

GROUND



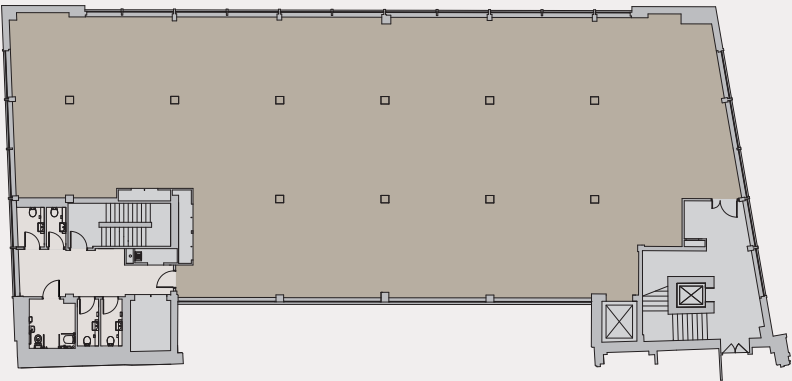
TYPICAL UPPER
(THIRD)

6,598 SQ FT / 613 SQ M



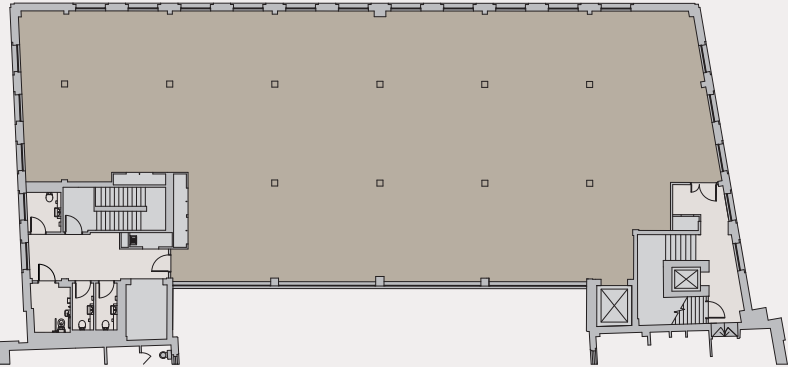
FIFTH FLOOR

6,006 SQ FT / 558 SQ M



SIXTH FLOOR

5,594 SQ FT / 520 SQ M





CONNECTIVITY

Located between two of Manchester’s main transport hubs – Manchester Victoria Station and Shudehill Transport Interchange – Dantzic is within three minutes walk of train, Metrolink and bus connections that serve the city, the North West and beyond.

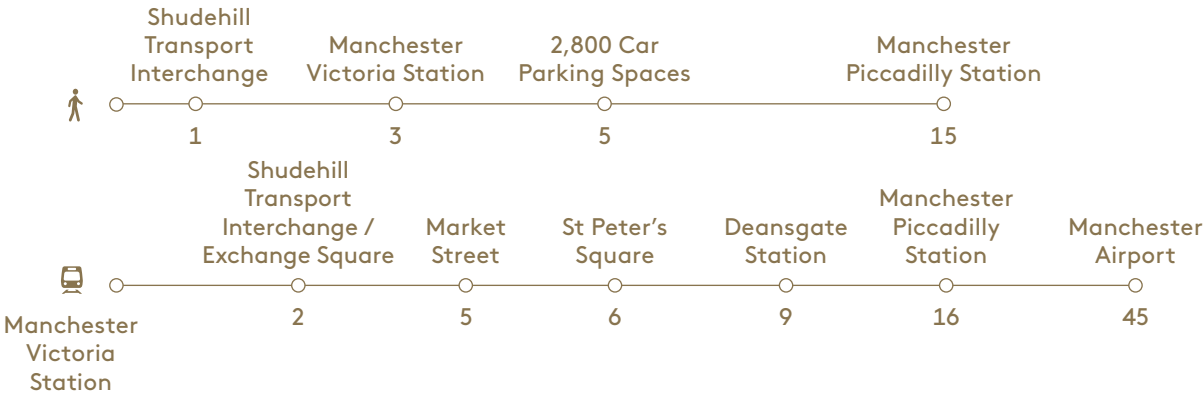
Manchester Piccadilly, just a 15 minute walk away, is two hours from London by train, with three trains per hour. The inner city ring road is adjacent to NOMA, offering easy car access.

The neighbourhood is also well served by multi-storey and surface car parks with more than 2,800 parking spaces five minutes away.

With a state-of-the-art fibre optic network built into NOMA’s infrastructure, the neighbourhood and the building offer future-proof carrier diverse connectivity services to tenants.



WALK / TRAM TIMES (MINS)



DRIVE / TRAIN TIMES (MINS)



- KEY
- Metrolink & stops
 - Ordsall Chord
 - Parking



(01)

AMENITIES

Dantzig is adjacent to Manchester’s leisure and retail core.

The city’s food and drink scene is hugely diverse, with something for every occasion and budget. It ranges from the mass market bars and restaurants at The Printworks through to destination locations such as Deansgate, King Street and the Northern Quarter — renowned for its independent eateries and bars.

New Cathedral Street boasts a selection of high-end retail names including Selfridges and Harvey Nichols, with Exchange Square offering a focal point for seasonal markets and city events. The Manchester Arndale, home to over 200 stores, is the UK’s largest inner city shopping centre, attracting 42 million visitors annually.

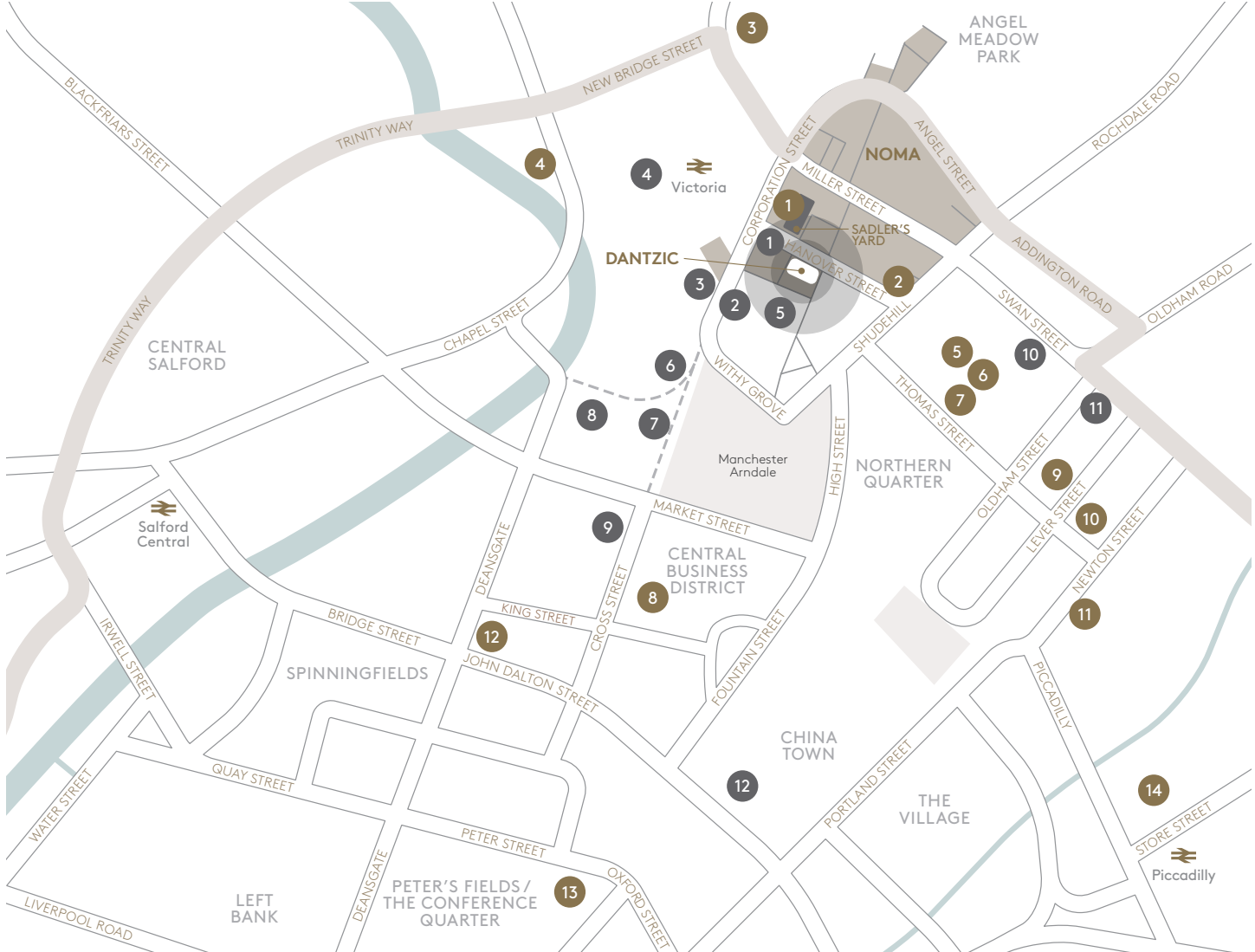
Also on Dantzig’s doorstep is Sadler’s Yard, a popular meeting place for weekday lunches and after work get-togethers, with its own curated events programme and The Pilcrow Pub. New for 2019 at NOMA is The Old Bank Residency, a collaborative project inhabiting a fantastic historic building that is bringing together creatives and the community for a host of special happenings.



(02)

- (01) **The Pilcrow Pub, Sadler’s Yard**
From modern and seasonal craft ale, to loose leaf teas and locally sourced coffee.
Hanover Street, M60 0AB

(02) **Teacup Kitchen**
Award winning café and restaurant at the heart of Manchester’s Northern Quarter.
53–55 Thomas Street, M4 1NA



CULTURE, ENTERTAINMENT & LEISURE

- 1

The Old Bank Residency

2 mins

2

Nuffield Gym

3 mins

3

National Football Museum

3 mins

4

Manchester Arena

3 mins

5

The Printworks

3 mins

6

The Corn Exchange

4 mins

7

Selfridges

5 mins

8

Harvey Nichols

6 mins

9

Royal Exchange Theatre

7 mins

10

Band on the Wall

7 mins

11

The Frog & Bucket

8 mins

12

Manchester Art Gallery

13 mins

EATING & DRINKING

- 1

The Pilcrow Pub
Modern craft ale, loose leaf teas and locally sourced coffee

2 mins

2

The Pasta Factory
A real Italian experience

3 mins

3

RBG Bar & Grill
Premier restaurant within the Park Inn by Radisson

5 mins

4

Umezushi
Authentic Japanese cuisine

6 mins

5

63 Degrees
Parisian-style brasserie

6 mins

6

Common
US diner-style classics and bakery

6 mins

7

Teacup Kitchen
Award winning restaurant and tearoom

6 mins
- 8

Grafene
British dining and scientifically inspired cocktails

9 mins

9

Bakerie
Delicious freshly home baked food and extensive wine selection

10 mins

10

Rosylee
Modern British fare

10 mins

11

Cottonopolis
Asian fusion bar/restaurant

11 mins

12

La Bandera
Classic Spanish cuisine

11 mins

13

The French
Modern British food by chef Adam Reid

15 mins

14

The Place
Sleek, modern bistro

15 mins

- (01) **Mowgli**
Authentic Indian street food in the city.
The Corn Exchange, M4 3TR
- (02) **Banyan Bar & Kitchen**
A stylish and genuine bar serving beautiful
food and drink all day long.
The Corn Exchange, M4 3TR
- (03) **Rosylee**
Modern British fare and afternoon tea
in an elegant space with banquettes
and chequered floors.
11 Stevenson Square, M1 1DB



(01)



(02)



(03)

CURATING A NEIGHBOURHOOD, THE NOMA STORY



20
ACRES

Made up of new homes,
offices, hotels, retail and leisure
space around vibrant urban
spaces and public realm

4M
SQ FT

The best connected
city centre location
in Manchester

Access to 1GBps
wi-fi speeds

6,000

6,000 people
currently work
in NOMA

Site of the world's first
steam-powered mill, home
to The Co-op for more than
160 years, next to the city
centre's only green park —
Angel Meadow

The Pilcrow Pub: Built from
scratch by the people of
Manchester, and a team
of master craftsmen

thepilcrowpub.com
[@thepilcrowpub](https://twitter.com/thepilcrowpub)

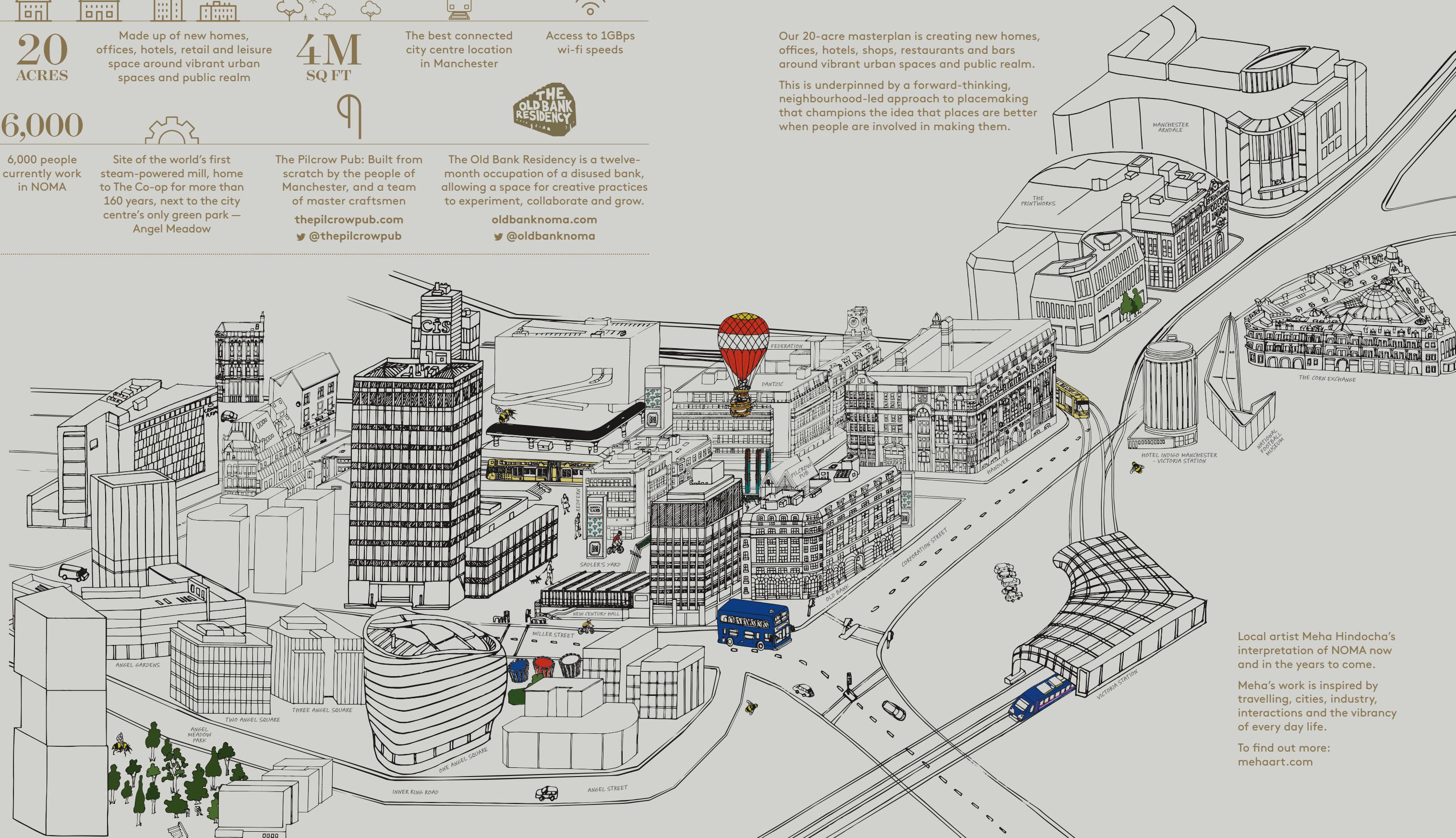
The Old Bank Residency is a twelve-
month occupation of a disused bank,
allowing a space for creative practices
to experiment, collaborate and grow.

oldbanknoma.com
[@oldbanknoma](https://twitter.com/oldbanknoma)



Our 20-acre masterplan is creating new homes,
offices, hotels, shops, restaurants and bars
around vibrant urban spaces and public realm.

This is underpinned by a forward-thinking,
neighbourhood-led approach to placemaking
that champions the idea that places are better
when people are involved in making them.



Local artist Meha Hindocha's
interpretation of NOMA now
and in the years to come.

Meha's work is inspired by
travelling, cities, industry,
interactions and the vibrancy
of every day life.

To find out more:
mehaart.com



NOMA

A Development by



Development Managers



Construction team



Address

Dantzic, Dantzic Street, NOMA, Manchester M60 0AF

CONTACT



0161
831
3300

www.colliers.com/uk/offices

Peter Gallagher
peter.gallagher@colliers.com
D +44 (0)161 831 3361
M +44 (0)7812 971560



0161 828 6440

jll.co.uk/property

James Devany
james.devany@eu.jll.com
D +44 (0)161 238 6233
M +44 (0)7525 582901



NOMA Digital Blueprint
is available on iPad.



Misrepresentation Act: Colliers and Jones Lang LaSalle and for themselves and for the vendor/lessor as agents for the vendor/lessor give notice that:
1. The information in these particulars is intended as a general outline only for the guidance of intending purchasers/lessees and neither Colliers, Jones Lang LaSalle nor the vendor/lessor on whose behalf these particulars are provided accept any responsibility for any inaccuracies the particulars may contain. Any intending purchaser/lessee should not rely upon them as statements or representations of fact but should satisfy themselves by inspection or otherwise as to their correctness. All floor areas and other measurements are approximate. 2. These particulars do not form, or form any part of, any offer or contract. 3. Neither Colliers, Jones Lang LaSalle nor any of their employees has any authority, either orally or in writing, to make or give any representations or warranties in relation to the property. 4. Unless otherwise stated, all prices and rents are quoted exclusive of VAT. May 2019.

The Code of Practice on Commercial Leases in England and Wales recommends you seek professional advice before agreeing a business tenancy. The Code is available through the website: www.commercialleasecodeew.co.uk

siren | +44 (0)20 7478 8300 | sirendesign.co.uk | S011313



[NOMA-MANCHESTER.COM/DANTZIC](https://noma-manchester.com/dantzic)