

Consultants:

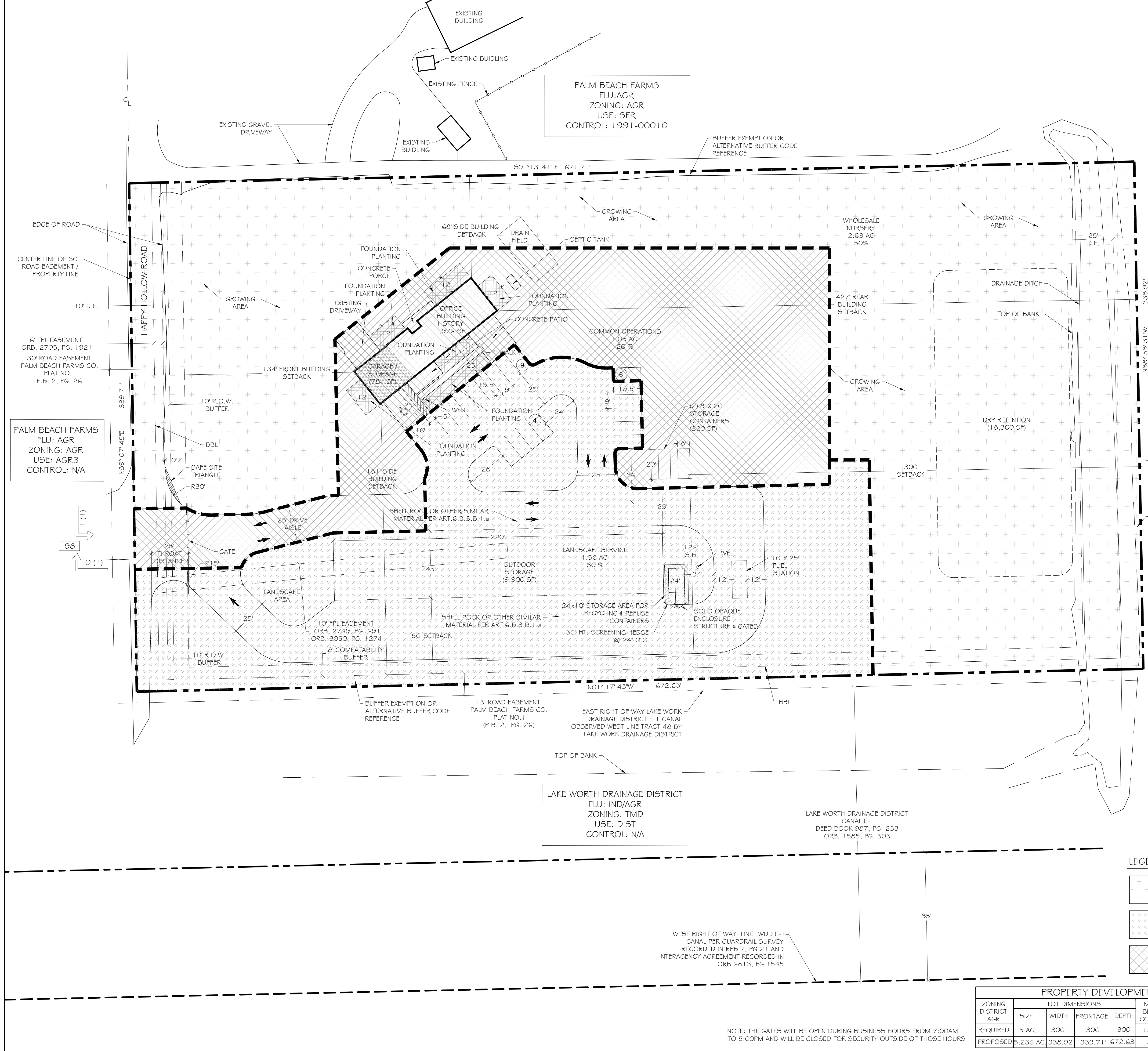
Revisions:

09-28-2020 - RESUBMITTAL
10-13-2020 - RESUBMITTAL
10-26-2020 - RESUBMITTAL
12-14-2020 - RESUBMITTAL

SITE DATA	
CONTROL NUMBER	2005-00335
APPLICATION NUMBER	DRO-2020-01116
NAME OF PROJECT	US LAWN CO.
TIER	RURAL
FUTURE LAND USE DESIGNATION	AGR
ZONING DISTRICT	AGR
EXISTING USE	AGRICULTURE
PROPOSED USE	WHOLESALE NURSERY/ LANDSCAPE SERVICE
PROPERTY CONTROL NUMBER	00424618010000480
TAZ	1745
TOTAL GROSS SITE AREA	5.236 AC (228,071 SF)
WHOLESALE NURSERY	2.63 AC (50%)
LANDSCAPE SERVICE	1.56 AC (30%)
COMMON OPERATIONS	1.05 AC (20%)
BUILDING AREA	3,080 SF
OFFICE BUILDING	1,976 SF
GARAGE STORAGE	784 SF
STORAGE CONTAINER	320 SF
PROPOSED FLOOR AREA RATIO	.014
MAX COVERAGE	15%
PROPOSED COVERAGE	1.4%
TOTAL REQUIRED PARKING	19 SPACES
NURSERY: (1 SPACE PER 4 AC)	1
LANDSCAPE SERVICE: (1 SPACE PER 250 SF OF OFFICE)	8 SPACES
OUTDOOR STORAGE: (1 SPACE PER 1,000 SF OF OUTDOOR STORAGE AREA FOR EMPLOYEE PARKING)	10 SPACES
PROVIDED PARKING	19
STANDARD	18
HANDICAP PARKING	1

CONCURRENCY RESERVATION*	
WHOLESALE NURSERY	2.63 AC
LANDSCAPE SERVICE	1.56 AC

*CONCURRENCY IS APPROVED FOR THE ABOVE USES AND AMOUNTS SHOWN ON THIS PLAN.



PALM BEACH FARMS
 FLU: AGR
 ZONING: AGR-PUD
 USE: AGR3
 CONTROL: 2002-00069

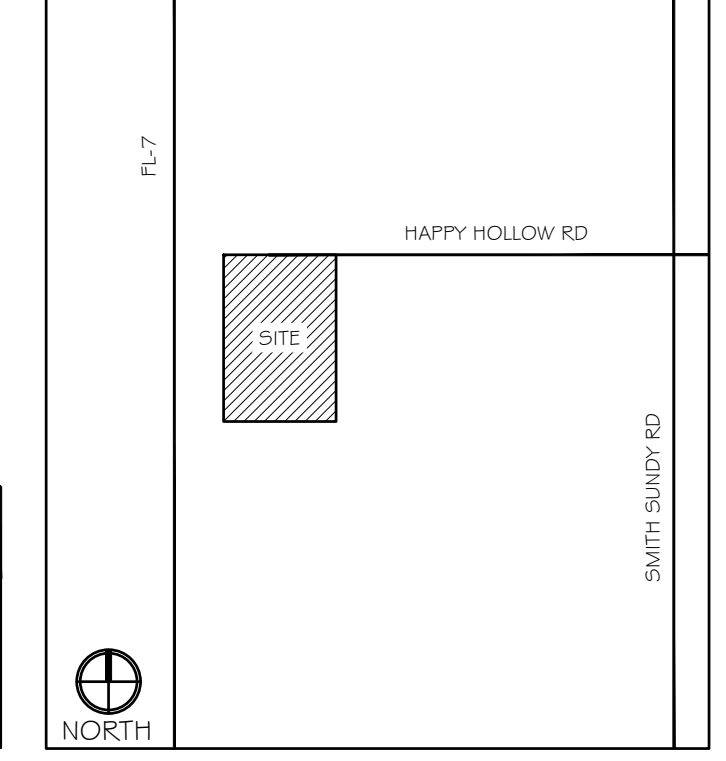
AMENDMENTS

ZONING STAMP

LEGEND

- NURSERY AREA
- LANDSCAPE SERVICE AREA
- COMMON OPERATIONS

LOCATION MAP



PROPERTY DEVELOPMENT REGULATIONS										
ZONING DISTRICT	LOT DIMENSIONS			MAX BLDG COVER	MAX FAR	MIN. SETBACKS				
	SIZE	WIDTH	FRONTAGE			DEPTH	FRONT	SIDE STREET	REAR	
REQUIRED AGR	5 AC.	300'	300'	300'	15%	.15	100'	50'	80'	100'
PROPOSED	5.236 AC	338.92'	339.71'	672.63'	1.4%	.014	134'	68'	181'	427'

NOTE: THE GATES WILL BE OPEN DURING BUSINESS HOURS FROM 7:00AM TO 5:00PM AND WILL BE CLOSED FOR SECURITY OUTSIDE OF THOSE HOURS

US LAWN CO.
 Delray Beach, Florida