



# For Lease

---

**7 Witherspoon Street  
Princeton, NJ**

---

**2,000+/- SF office space available**

- In the heart of Princeton's historic central business district
- Well located, immediately above Agricola
- A short walk to restaurants, shops, and three parking garages
- 5 offices, bullpen area, reception, break/dining area, 2 private restrooms

Tim Norris  
+1 609 575 2977

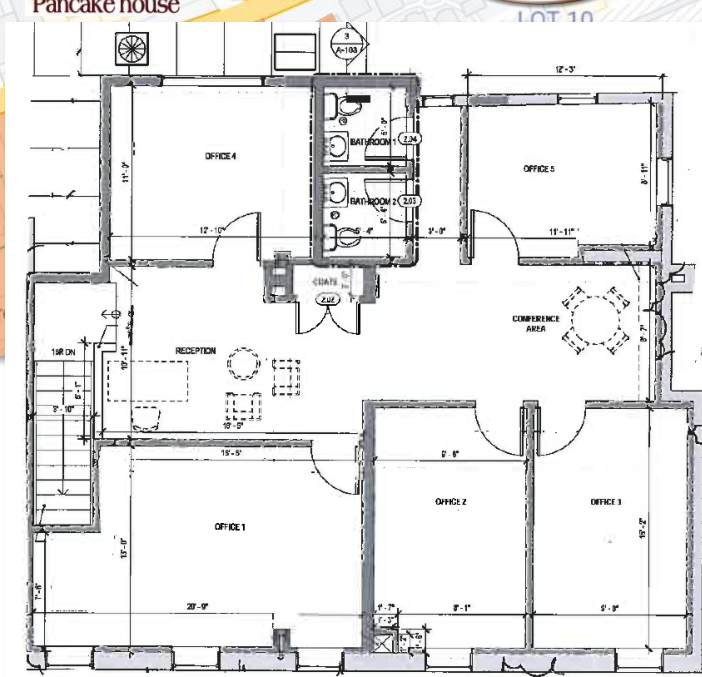
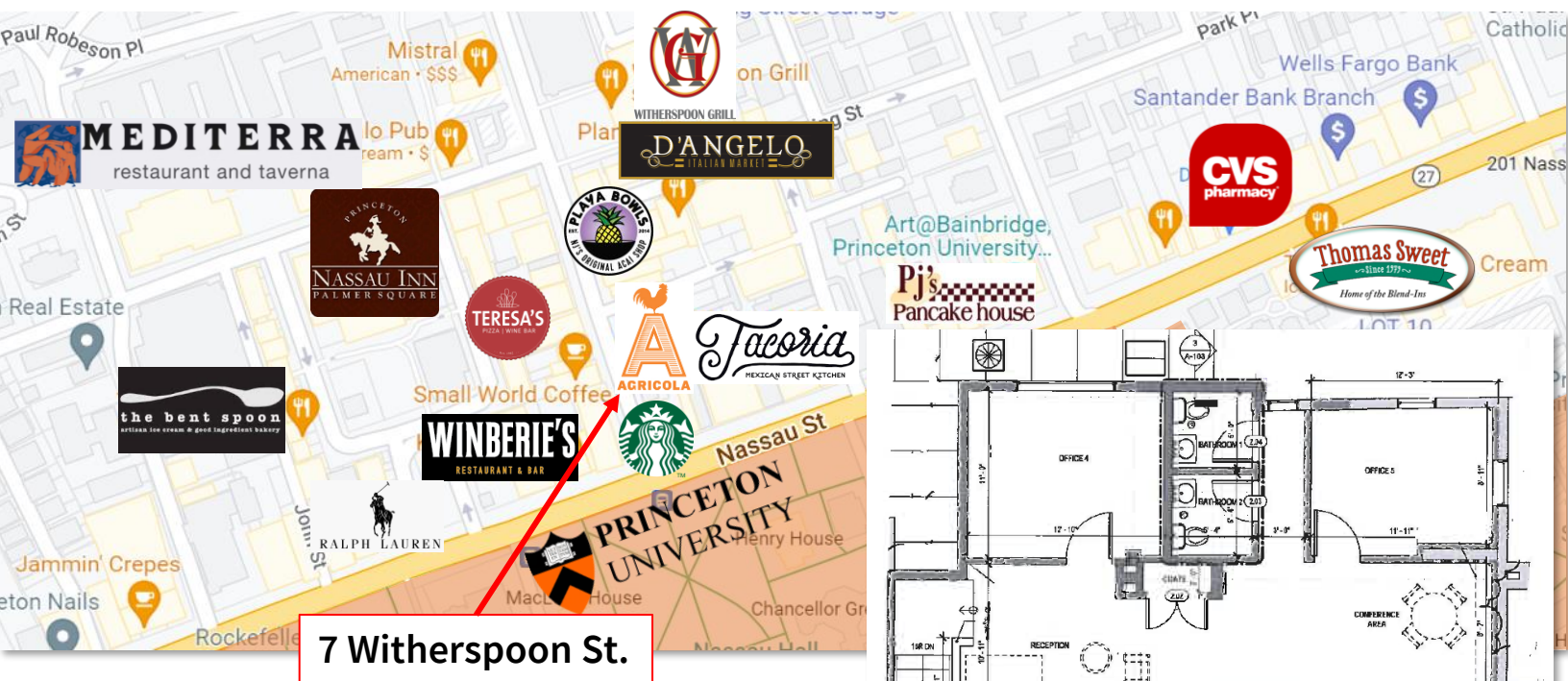
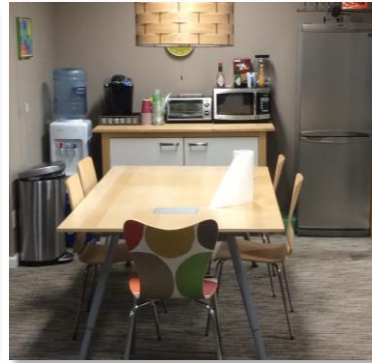
[Tim.Norris@am.jll.com](mailto:Tim.Norris@am.jll.com)

Chris Romano  
+1 609 462 4858

[Christopher.Romano@am.jll.com](mailto:Christopher.Romano@am.jll.com)

---

# 7 Witherspoon Street



Existing  
2<sup>nd</sup> Floor