

FOR LEASE



WATERS EDGE RETAIL SPACE FOR LEASE

6667 N GLENWOOD ST, GARDEN CITY
AVAILABLE: 1,520 SF
Asking Rate: Contact Agent
Lease Type: NNN (\$5.82/SF/YR)

PROPERTY HIGHLIGHTS

- Great visibility with Glenwood Street frontage
- Convenient accessibility to site
- Shadow anchored by Walmart
- Available May, 2025
- Approximately 43,152 VPD
- Other Tenants in the vicinity include O'Reilly Auto Parts, Subway, Fixitpro, Panda Express, Walgreens, Sonic, Swig, Idaho Pizza Company, Boise Boba and many others.



AVAILABLE SPACE
STE 110 | 1,520 SF



LEASE TERM
Flexible



ASKING
Contact Agent



INTERMOUNTAIN
COMMERCIAL REAL ESTATE

DARIN BURRELL
darin@icreboise.com
(208) 286-2260 office
(208) 860-0332 cell

SETH MCCORMACK
seth@icreboise.com
(208) 286-2272 office
(208) 918-1030 cell



EXECUTIVE SUMMARY

Available SF: **1,520 SF**

VPD: **≈40,000**

Market: **Boise/Garden City**

Lease Rate: **Contact Agent**

Cross Streets: **N Glenwood St
& Riverside Drive**

Available: **May 2025**

Lease Type: **NNN (\$5.82/SF/YR)**

Location

Ideally situated in close proximity to Walmart, D&B, Ross, Walgreens and many more retail shops, with great visibility and frontage access from popular Glenwood Street in Garden City, Idaho.

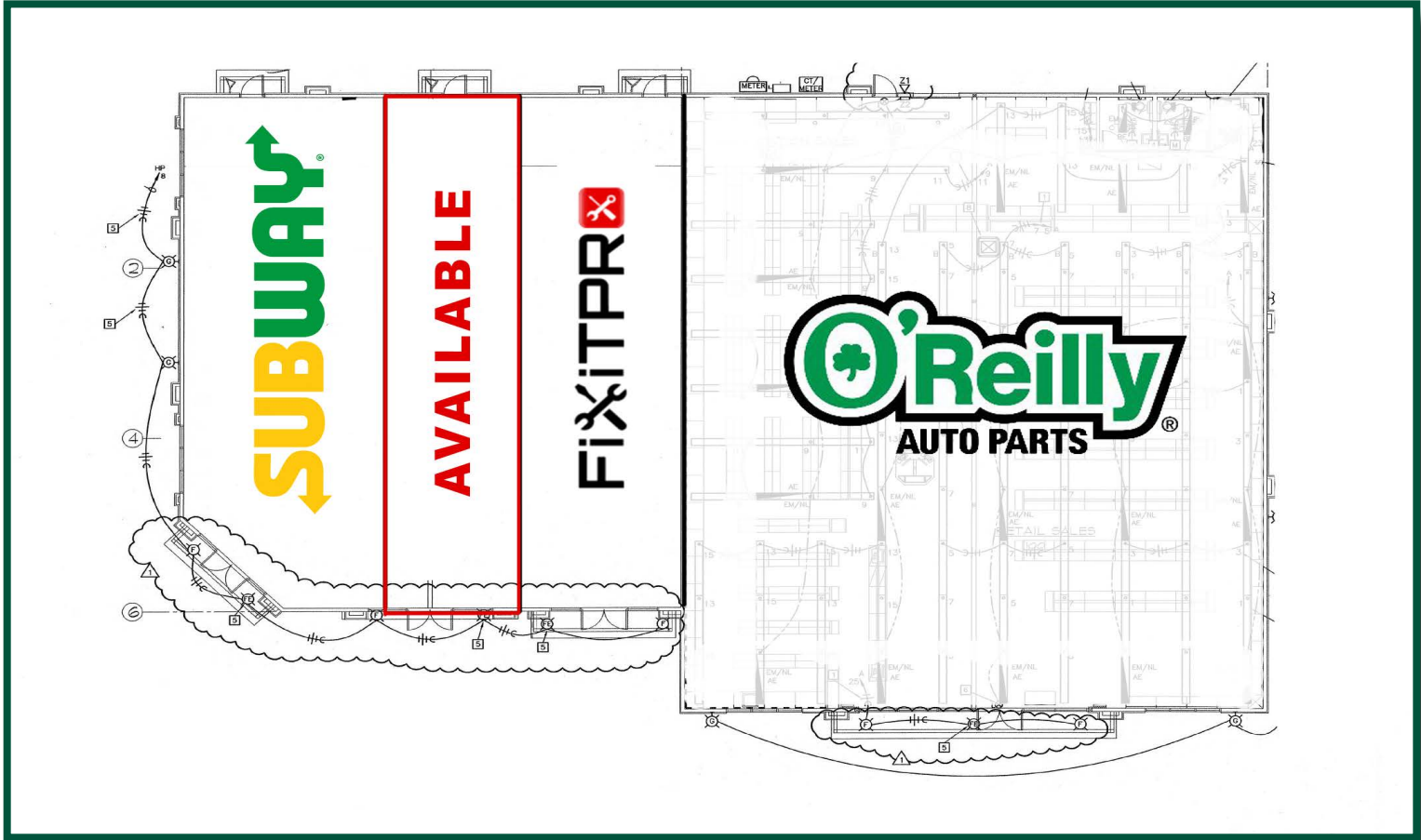


INTERMOUNTAIN
COMMERCIAL REAL ESTATE

DARIN BURRELL
darin@icreboise.com
(208) 286-2260 office
(208) 860-0332 cell

SETH MCCORMACK
seth@icreboise.com
(208) 286-2272 office
(208) 918-1030 cell

**1,520 SF
FOR LEASE**

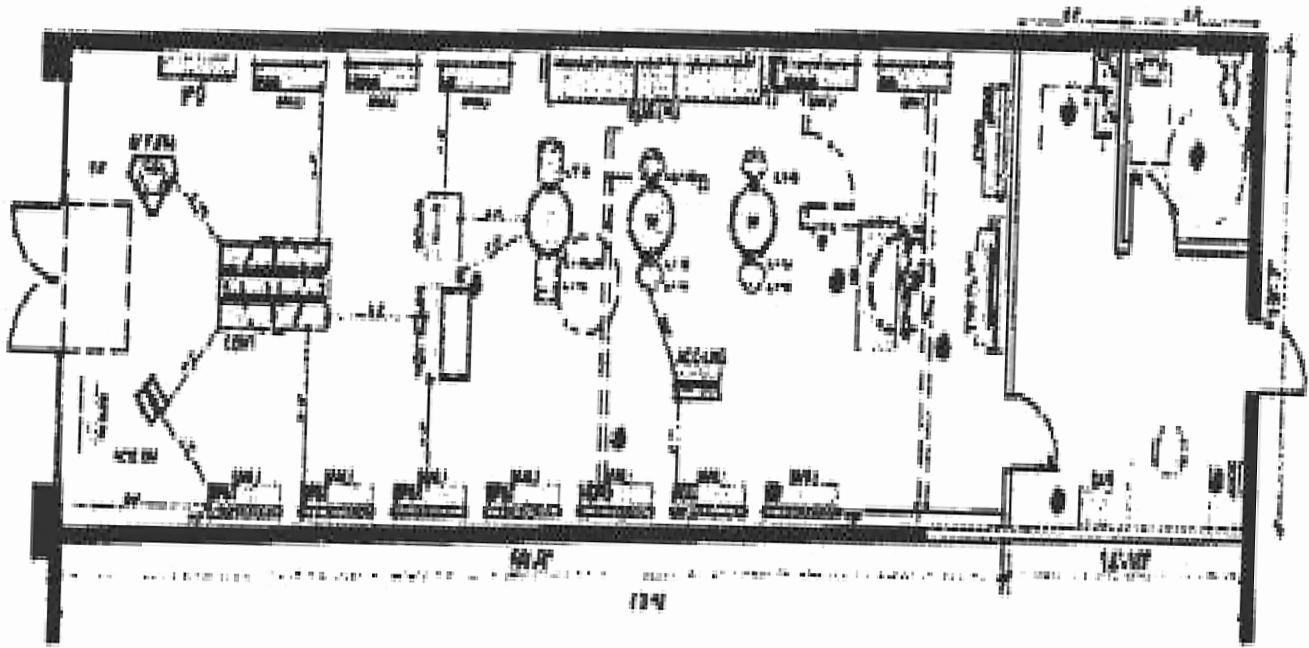


INTERMOUNTAIN
COMMERCIAL REAL ESTATE

DARIN BURRELL
darin@icreboise.com
(208) 286-2260 office
(208) 860-0332 cell

SETH MCCORMACK
seth@icreboise.com
(208) 286-2272 office
(208) 918-1030 cell

**1,520 SF
FOR LEASE**



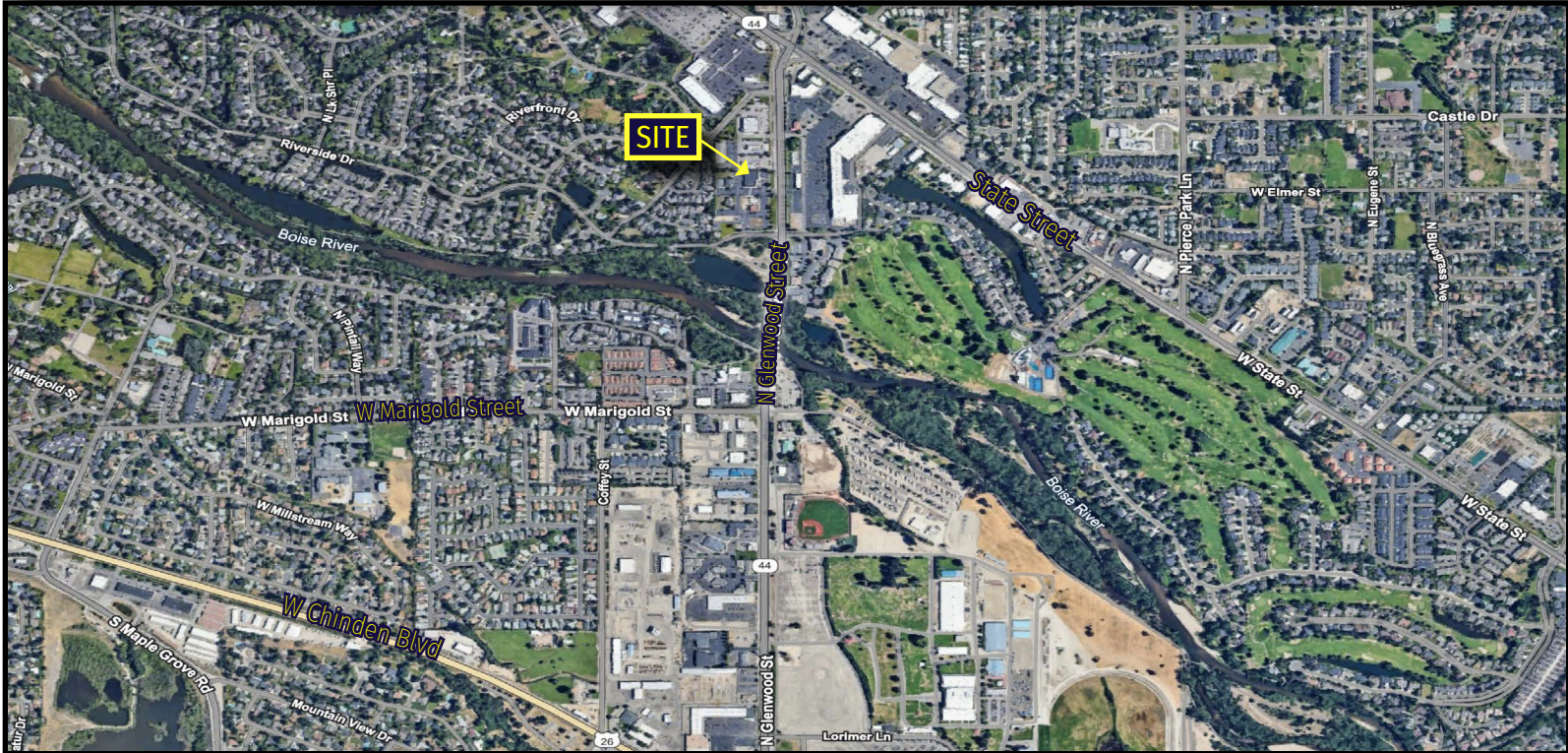
INTERMOUNTAIN
COMMERCIAL REAL ESTATE

DARIN BURRELL
darin@icreboise.com
(208) 286-2260 office
(208) 860-0332 cell

SETH MCCORMACK
seth@icreboise.com
(208) 286-2272 office
(208) 918-1030 cell

www.icreboise.com | 380 E. Parkcenter Boulevard Suite 290, Boise, ID 83706 | (208) 429-8603 office

WATERS EDGE RETAIL SPACE | 6667 N GLENWOOD ST, BOISE, ID 83714



INTERMOUNTAIN
COMMERCIAL REAL ESTATE

DARIN BURRELL
darin@icreboise.com
(208) 286-2260 office
(208) 860-0332 cell

SETH MCCORMACK
seth@icreboise.com
(208) 286-2272 office
(208) 918-1030 cell

www.icreboise.com | 380 E. Parkcenter Boulevard Suite 290, Boise, ID 83706 | (208) 429-8603 office

The information has been obtained from sources believed reliable and, while we do not doubt its reliability, ICRE has not verified it and makes no guarantees, warranties or representations, expressed or implied, as to its accuracy. All interested parties should conduct their own independent investigation and rely on those results.