

ENTITLED LAND FOR SALE

Reduced!

Great Cesar Chavez/Soto Street Location

LAND SQ.FT.: 14,100 ±



2141-2145 E CESAR CHAVEZ AVE & 314-318 N CHICAGO ST, LOS ANGELES, CA 90033

Fully Entitled Land With Architectural Plans

- Plans in place for a 10,486 sq.ft. 3-story retail/office building with parking in rear
- 2,486 sq.ft. ground floor, 4,086 sq.ft. 2nd floor and 3,914 sq.ft. 3rd floor
- Zoned LA RD1.5 and LA C2
- Assessor's parcel number 5175-013-004,018,019
- Situated on Cesar Chavez Avenue and Chicago Street (L-shaped parcels)
- Currently a 4,050 sq.ft. store building on 14,100 sq.ft. of land
- Situated two blocks west of Soto Street
- Just 1/2 mile from the I-10, I-5 and 101 Freeways
- LAC+USC Medical Center is located one mile to the north
- Just minutes from Downtown Los Angeles
- Asking price: \$1,450,000

For More Information, Please Contact

RENE MEXIA

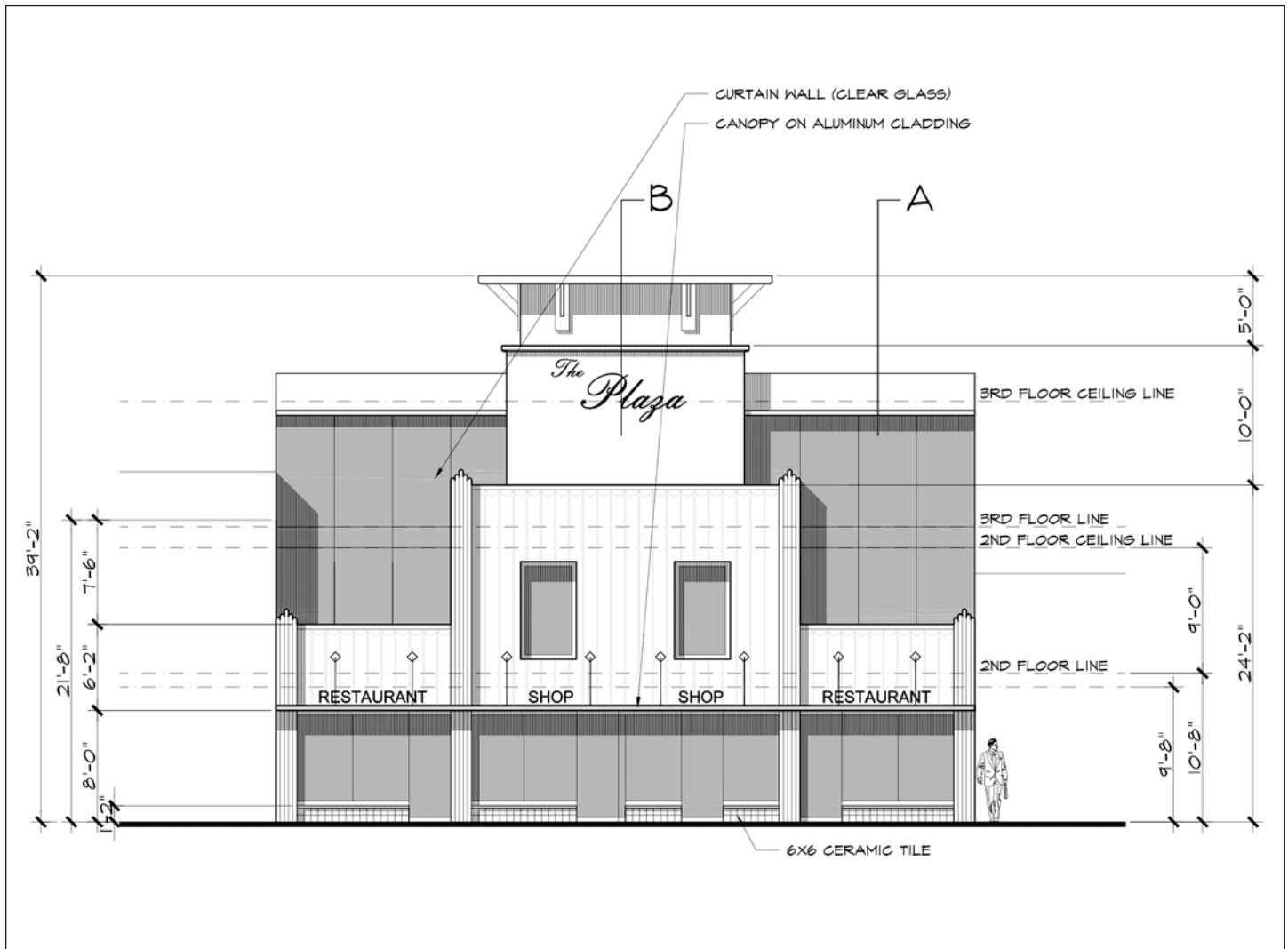
213.747.4155

rene@majorproperties.com

CA BRE LIC. # 01424387

The information contained herein is furnished by sources we deem reliable, but for which we assume no liability. It is given in confidence and with the understanding that all negotiations pertaining to the property be handled through the listing office. All measurements are approximate.

Sample Front Elevation Rendering



ENTITLED LAND FOR SALE

Reduced!



ENTITLED LAND FOR SALE

Reduced!

