

SENDIK'S TOWNE CENTRE



MID-AMERICA[®]
Real Estate-Wisconsin, LLC

**UP TO 5,827 SF
FOR LEASE**

Capitol Drive & Brookfield Road / Brookfield, WI



RETAIL OPPORTUNITY

SENDIK'S TOWNE CENTRE



Address

18985 West Capitol Drive
Brookfield, WI 53045

Availability

1,500 SF - 5,827 SF
Total GLA: 197,253 SF

Traffic Counts

37,000 vpd on Capitol Drive
8,800 vpd on Brookfield Road

Co-Tenants



Features

- First-class architectural design
- Highly identifiable shopping center
- Unparalleled demographics
- Regional access from Capitol Drive
- 963 surface parking spaces and 93 underground spaces
- 5.6 spaces per 1,000 square feet of GLA

Operational Expenses

CAM/Ins: \$3.40 PSF
Taxes: \$1.65 PSF
Total: \$5.05 PSF

Demographics

	1 MILE	3 MILES	5 MILES
POPULATION	3,490	34,732	94,034
HOUSEHOLDS	1,432	13,147	38,639
AVE HOUSEHOLD INCOME	\$149,905	\$151,929	\$129,726
DAYTIME POPULATION	3,990	37,738	129,887

SENDIK'S TOWNE CENTRE

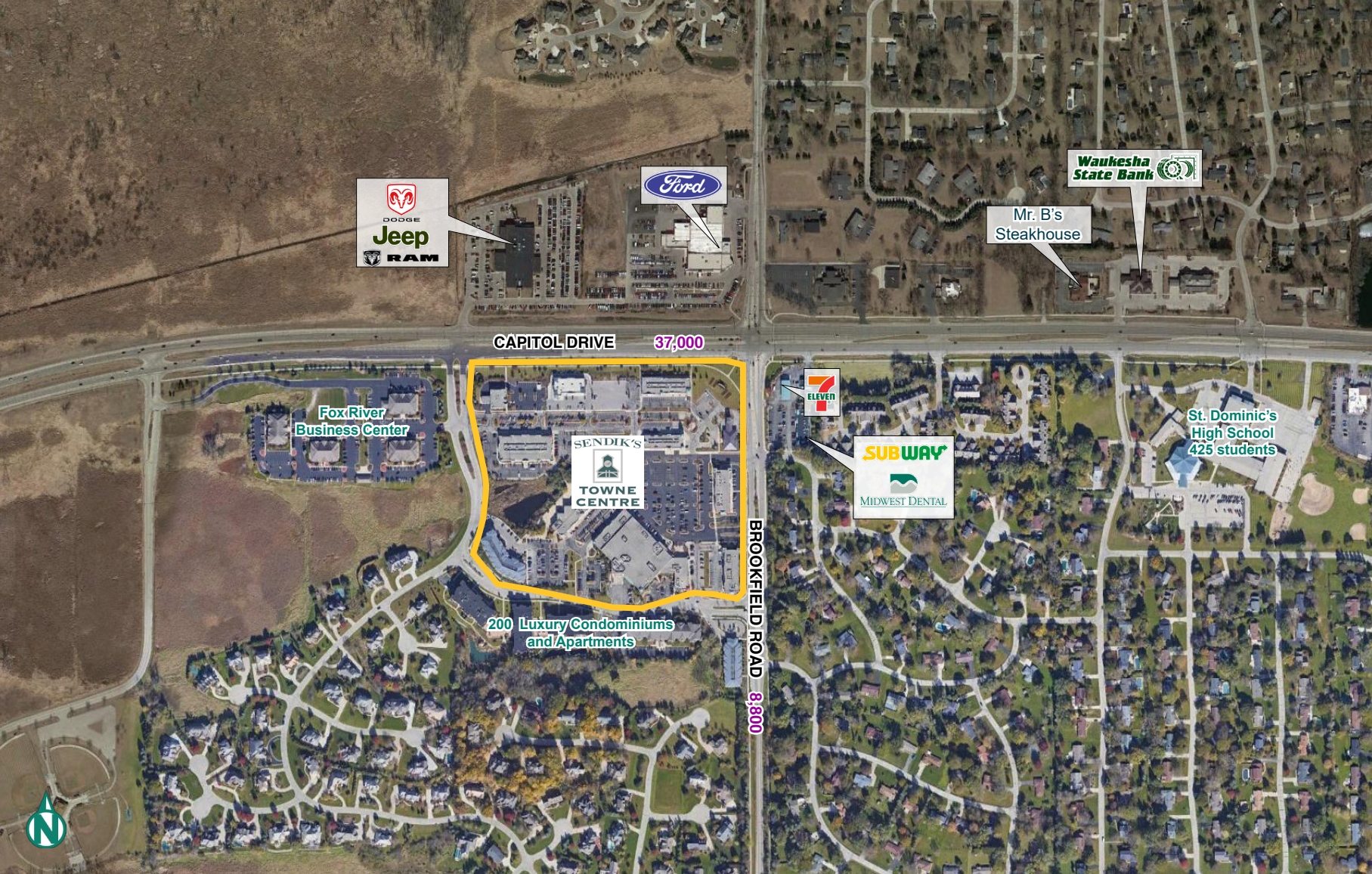


SUITE	TENANT	SQ. FT
B-110	Luna Med Spa	2,190
B-130	Verizon Wireless	3,997
B-140	Starbucks	2,158
C-100	Goo Goo Gaa Gaa	2,000
C-101	AVAILABLE	3,370
C-106	Ballera	1,837
C-108	Pro-Health	2,000
C-109	Pro-Health	1,694
C-110	Pro-Health	2,212
E-100	Briohn Builders	4,914
E-110	Neroli Salon & Spa	4,886
E-200	Briohn Building Corp	10,257
F-100	Cafe Manna	2,823
F-101	Code Ninjas	3,120
F-102	AVAILABLE	2,200
F-103	Ixonia Bank	1,698
F-104	AVAILABLE	1,671
F-200	Milwaukee Ballet Company	860
F-201	Milwaukee Ballet Company	4,280
F-203	Edward Jones	1,327
F-204	U-Build It	1,996
G-100	Towne Center Cleaners	2,000
G-101	AVAILABLE	1,510
G-103	Brunch	4,026
H-101	Sendik's Fine Foods	54,031
HI-100	What's In The Bowl	4,000
HI-101	Absolute Pilates	1,661
HI-102	AVAILABLE	1,770
HI-103	AVAILABLE	2,245
J-100	Great Lakes Vet Dermatology	3,600
J-101	Care Surgery Center	4,221
J-102	Brookfield Prescription Center	3,892
J-106	Brookfield Vision Center	3,070
J-108	Somerstone	1,147
N-100	North Star American Bistro	6,792
N-102	AVAILABLE	2,074
N-104	Message Envy	3,070
N-106	Affordable Office Interiors	3,924
N-117	AVAILABLE	3,805
N-118	AVAILABLE	2,022
N-121	AVAILABLE	1,500
S-100	Bliss Bridal	4,000
S-104	Lyly Nails & Spa	3,300
S-108	Midwest Bead & Supply	2,337
TOTAL		197,552



SITE PLAN

SENDIK'S TOWNE CENTRE



SENDIK'S TOWNE CENTRE

Scott
Satula

T: 414.390.1424

SSatula@MidAmericaGrp.com



600 N. Plankinton Ave, Suite 301
Milwaukee, Wisconsin 53203
414.273.4600

MidAmericaGrp.com



CONTACT

BROKER DISCLOSURE TO NON-RESIDENTIAL CUSTOMERS



Prior to negotiating on your behalf the brokerage firm, or an agent associated with the firm, must provide you the following disclosure:

DISCLOSURE TO CUSTOMERS

You are a customer of the brokerage firm (hereinafter Firm). The Firm is either an agent of another party in the transaction or a subagent of another firm that is the agent of another party in the transaction. A broker or a salesperson acting on behalf of the Firm may provide brokerage services to you. Whenever the Firm is providing brokerage services to you, the Firm and its brokers and salespersons (hereinafter Agents) owe you, the customer, the following duties:

- The duty to provide brokerage services to you fairly and honestly.
- The duty to exercise reasonable skill and care in providing brokerage services to you.
- The duty to provide you with accurate information about market conditions within a reasonable time if you request it, unless disclosure of the information is prohibited by law.
- The duty to disclose to you in writing certain Material Adverse Facts about a property, unless disclosure of the information is prohibited by law.
- The duty to protect your confidentiality. Unless the law requires it, the Firm and its Agents will not disclose your confidential information or the confidential information of other parties.
- The duty to safeguard trust funds and other property held by the Firm or its Agents.
- The duty, when negotiating, to present contract proposals in an objective and unbiased manner and disclose the advantages and disadvantages of the proposals.

Please review this information carefully. An Agent of the Firm can answer your questions about brokerage services, but if you need legal advice, tax advice, or a professional home inspection, contact an attorney, tax advisor, or home inspector. This disclosure is required by section 452.135 of the Wisconsin statutes and is for information only. It is a plain-language summary of the duties owed to a customer under section 452.133(1) of the Wisconsin statutes.

CONFIDENTIALITY NOTICE TO CUSTOMERS

The Firm and its Agents will keep confidential any information given to the Firm or its Agents in confidence, or any information obtained by the Firm and its Agents that a reasonable person would want to be kept confidential, unless the information must be disclosed by law or you authorize the Firm to disclose particular information. The Firm and its Agents shall continue to keep the information confidential after the Firm is no longer providing brokerage services to you.

The following information is required to be disclosed by law:

1. Material Adverse Facts, as defined in Wis. Stat. § 452.01(5g) (see "Definition of Material Adverse Facts").
2. Any facts known by the Firm or its Agents that contradict any information included in a written inspection report on the property or real estate that is the subject of the transaction.

To ensure that the Firm and its Agents are aware of what specific information you consider confidential, you may list that information below. At a later time, you may also provide the Firm or its Agents with other Information you consider to be confidential.

NON-CONFIDENTIAL INFORMATION (*the following information may be disclosed by the Firm and its Agents*): _____

(Insert information you authorize to be disclosed, such as financial qualification information.)

CONFIDENTIAL INFORMATION: _____

DEFINITION OF MATERIAL ADVERSE FACTS

A "Material Adverse Fact" is defined in Wis. Stat. § 452.01(5g) as an Adverse Fact that a party indicates is of such significance, or that is generally recognized by a competent licensee as being of such significance to a reasonable party, that it affects or would affect the party's decision to enter into a contract or agreement concerning a transaction or affects or would affect the party's decision about the terms of such a contract or agreement.

An "Adverse Fact" is defined in Wis. Stat. § 452.01(1e) as a condition or occurrence that a competent licensee generally recognizes will significantly and adversely affect the value of the property, significantly reduce the structural integrity of improvements to real estate, or present a significant health risk to occupants of the property; or information that indicates that a party to a transaction is not able to or does not intend to meet his or her obligations under a contract or agreement made concerning the transaction.

NOTICE ABOUT SEX OFFENDER REGISTRY

You may obtain information about the sex offender registry and persons registered with the registry by contacting the Wisconsin Department of Corrections on the Internet at <http://www.doc.wi.gov> or by telephone at 608-240-5830.