



**FOR
LEASE**

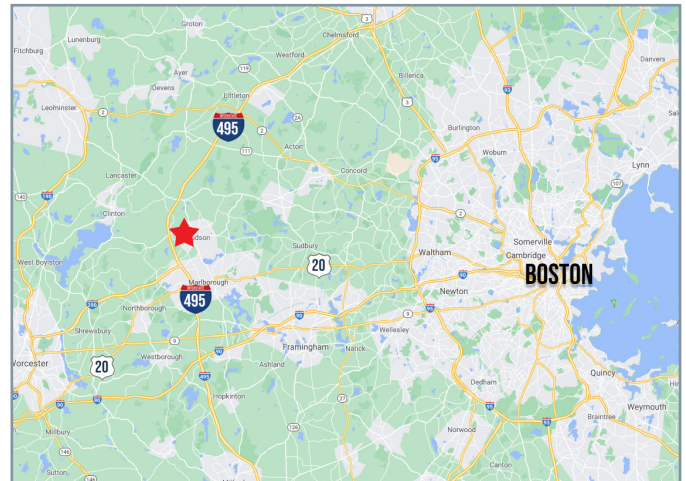
282 CENTRAL STREET

HUDSON, MA

Industrial/Warehouse

1,792 - 5,487 SF Available

282 Central Street, is a 24,000 SF industrial/warehouse multi-tenant building, built in 2004 with 2 available units. Units 1/12 is a pair of conjoined units with no dividing wall and totals 3,695 SF of mostly warehouse with a drive-in and loading dock on opposite sides with several small offices and a reception area. Unit 11 is a 1,792 SF unit with a loading dock and mezzanine. All three units can be conjoined. The property is off Route 62 and less than a mile from I-495. All units are available Jan. 1st 2022.



Bradley Sampson
Associate

978-501-1649 Mobile

508-281-2940 Direct

bradley@obriencommercial.com

C O M M E R C I A L
O'BRIEN
P R O P E R T I E S , I N C

O'Brien Commercial Properties, Inc • 336 Baker Avenue, Concord, MA 01742 • www.obriencommercial.com

Every effort has been made to furnish the most accurate information available on this property and should be deemed as such, however, all statements and conditions contained herein are subject to errors, omissions, prior sale and/or lease and/or removal from the market.

282 CENTRAL STREET, HUDSON, MA

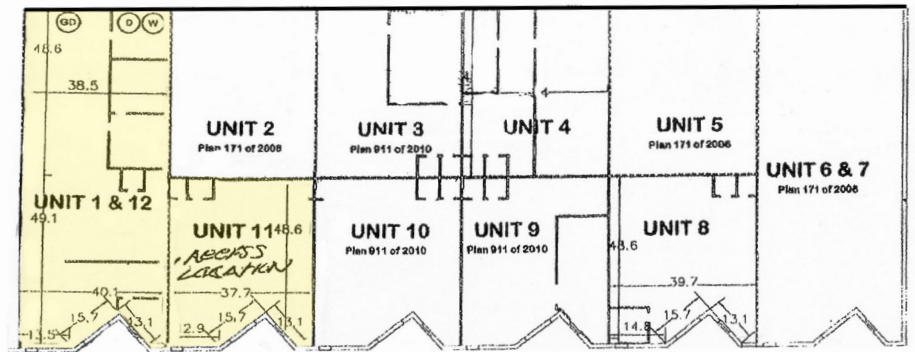
>> SPECIFICATIONS

Total Size:	24,000 SF
Land:	7.42 Acres
Available:	5,487 SF (Max Contingent)
Zoning:	Industrial
Tenancy:	Multi
Stories:	One (1)
Drive-Ins:	Six (6) 10' x 14'
Power:	2400a/280v 3 Phase
Parking:	+/- 45 Lot Spaces
Built:	2004
Water:	Well
Sewer:	Septic

AERIAL VIEW



FLOORPLAN



TO LEARN MORE CONTACT: O'BRIEN COMMERCIAL PROPERTIES, INC.
978-369-5500 | www.obriencommercial.com | bradley@obriencommercial.com