

INDUSTRY CITY BUILDING 19

**35 ACRES
16 BUILDING
6 MILLION SF**

Community

Industry City, an urban campus in the heart of Brooklyn is an innovation ecosystem of more than 450 companies collaborating across disciplines including fashion, food, media, design and technology. The same partnership that developed Chelsea Market in Manhattan's Meatpacking District is infusing hundreds of millions of dollars into NYC's next creative hub.

Building 19

Representing the next phase of Industry City, Building 19 offers large blocks of contiguous space with up to 90,000 square feet per floor. Flooded with natural light and unparalleled views of the Manhattan Skyline and Lady Liberty, Building 19 is the perfect home for inspired office space.

INDUSTRY CITY BUILDING 19



INDUSTRY CITY BUILDING 19



INDUSTRY CITY EATS

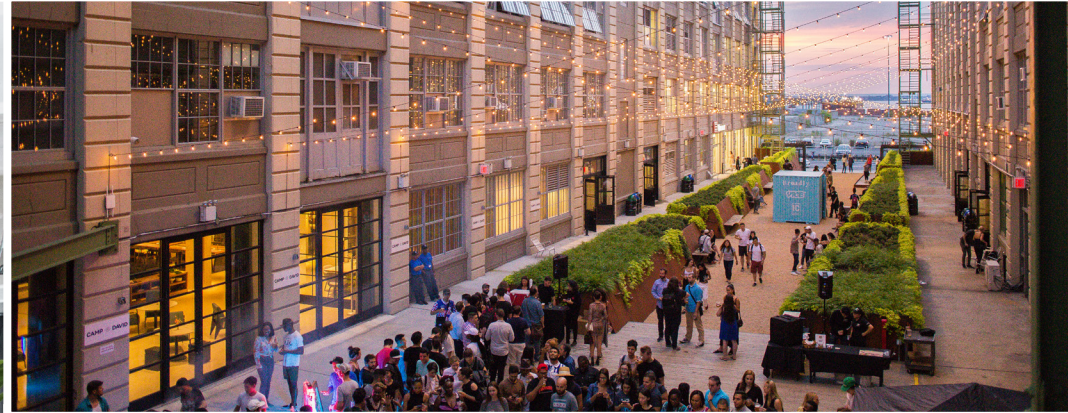
Home to many of NYC's finest food and beverage purveyors, making Industry City an international culinary destination.

Read: [NY Eater's Guide to Industry City's Food Hall in Sunset Park](#)

Watch: [NBC 4 New York's Inside Brooklyn's Ultimate Shopping and Dining Destination](#)

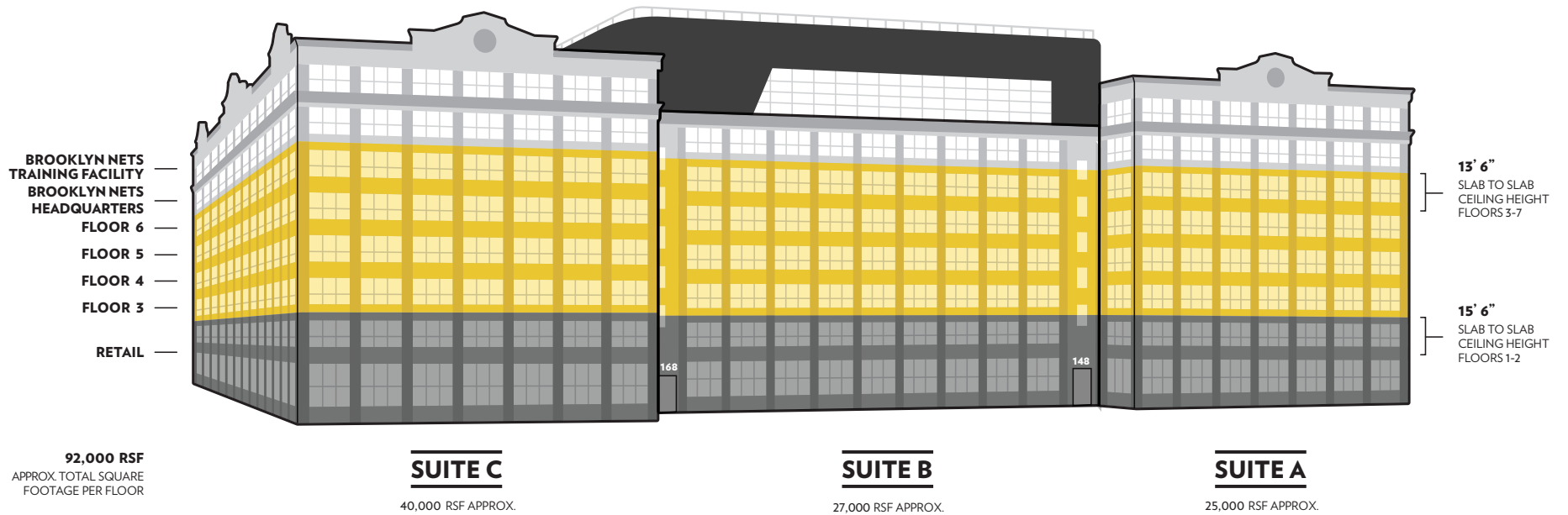
- AVOCADERIA
- BANGKOK BAR
- BLUE MARBLE
- BOIL BOIL RAMEN
- BRINE AND DINE
- BROOKLYN KURA
- BURGER JOINT
- COLSON PATISSERIE
- EJEN
- ENDS MEAT
- EXTRACTION LAB
- FILAMENT AT THE LANDING
- HOMETOWN BAR-B- QUE
- KOTTI BERLINER DONER KEBAB
- LI-LAC CHOCOLATES
- ONE GIRL COOKIES
- TABLE 87
- TACO MIX
- THE FRYING PAN
- YASO TANGBAO





INDUSTRY CITY'S 35- ACRE CAMPUS OFFERS A WIDE VARIETY OF AMENITIES

- 800,000 square feet of retail
- 40,000 square-foot food hall
- Bi-level tenant lounge, café and bar
- Tenant gym
- Health and wellness activations
- Five acres of landscaped, furnished outdoor space
- Outdoor bike racks and indoor bike rooms
- Tenant Portal, allowing tenants to connect and access daily updates about programming, discounts and promotions
- Ongoing pop-ups shops, flea markets, sample sales, concerts, movies, and lunch & learns
- On-site parking and Citibike stations
- Campus shuttle
- On-site workforce development training and community center
- Brooklyn Greenway pedestrian and bike path (complete 2020)



- 13'6" Ceiling Heights
- 24.5' East to West, 12.5' North to South Column Spacing
- 200lbs Floor Loads
- Oversized windows
- 24/7 manned lobby
- WiredScore Certified Internet connectivity

INDUSTRY CITY BUILDING 19



INDUSTRY CITY BUILDING 19



INDUSTRY CITY BUILDING 19



INDUSTRY CITY BUILDING 19



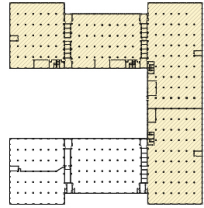
INDUSTRY CITY BUILDING 19



INDUSTRY CITY BUILDING 19



KEY PLAN



LEGEND

RSF	133,649
Total Seats	556
RSF/ Seats	222

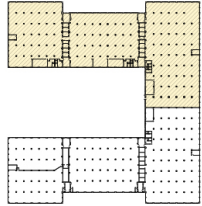
Work Space	Size	Seats
Typical Office	200 sq. ft.	7
Workstation	6'0" x 24"	184
Benching	5'6" x 24"	364
Reception		1

Support	Count
Conference Room	5
Open Meeting	11
Meeting Room	15
Phone Room	7
Wellness Room	2
Cafe	1
Pantry	1
Town Hall	1
Game Room	1
Fitness Room	1
Atrium	1
Auditorium	1
Library	1
Bar/ Lounge Area	1
IT/ Server Room	2
Office Services	3
Hotel Bar	9



COURTYARD

KEY PLAN

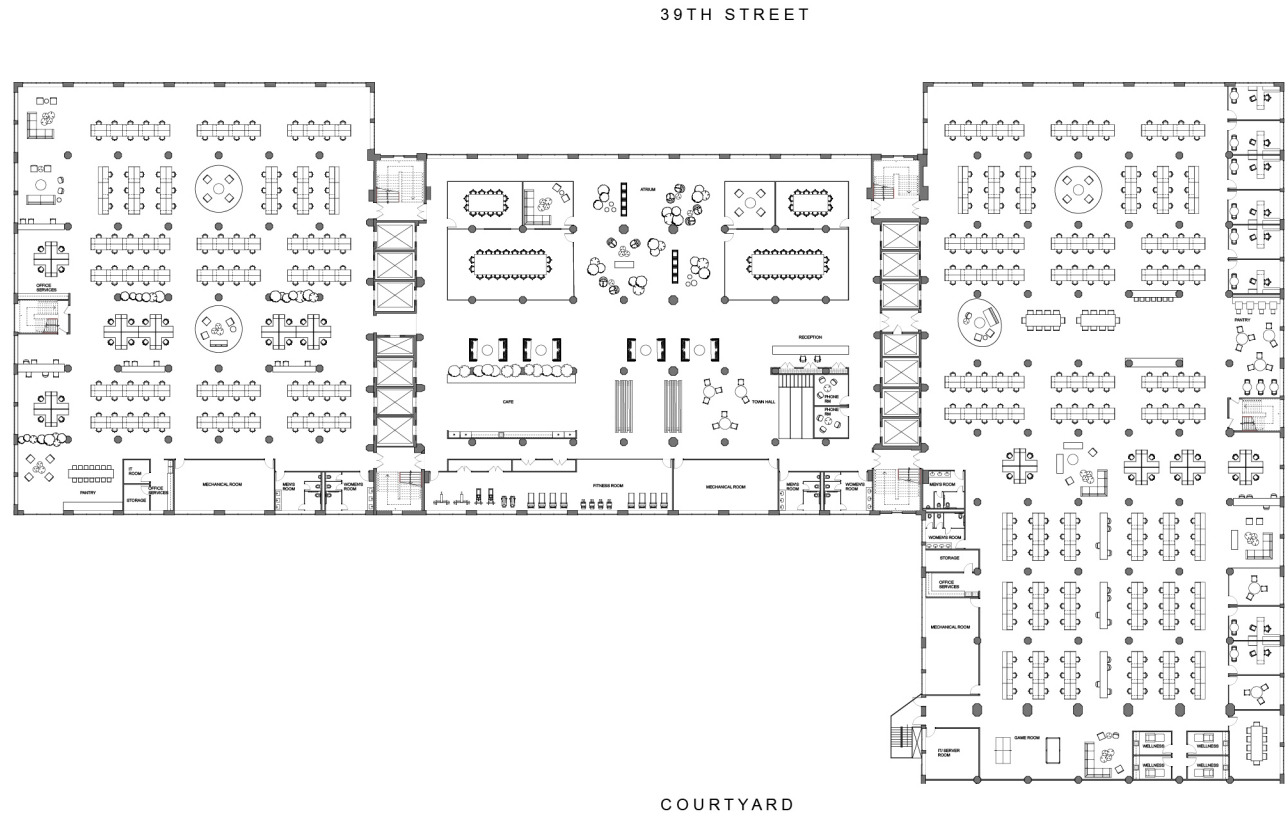


LEGEND

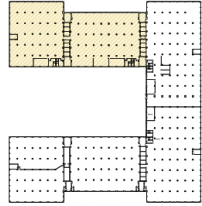
RSF	91,812
Total Seats	459
RSF/ Seats	192

Work Space	Size	Seats
Typical Office	200 sq. ft.	8
Workstation	6'0" x 24"	40
Benching	5'6" x 24"	410
Reception		1

Support		
Conference Room		5
Open Meeting		9
Meeting Room		4
Phone Booths		2
Wellness Room		4
Cafe		1
Pantry		2
Town Hall		1
Game Room		1
Fitness Room		1
Atrium		1
Office Services		3
IT/ Server Room		2
Hotel Bar		8



KEY PLAN

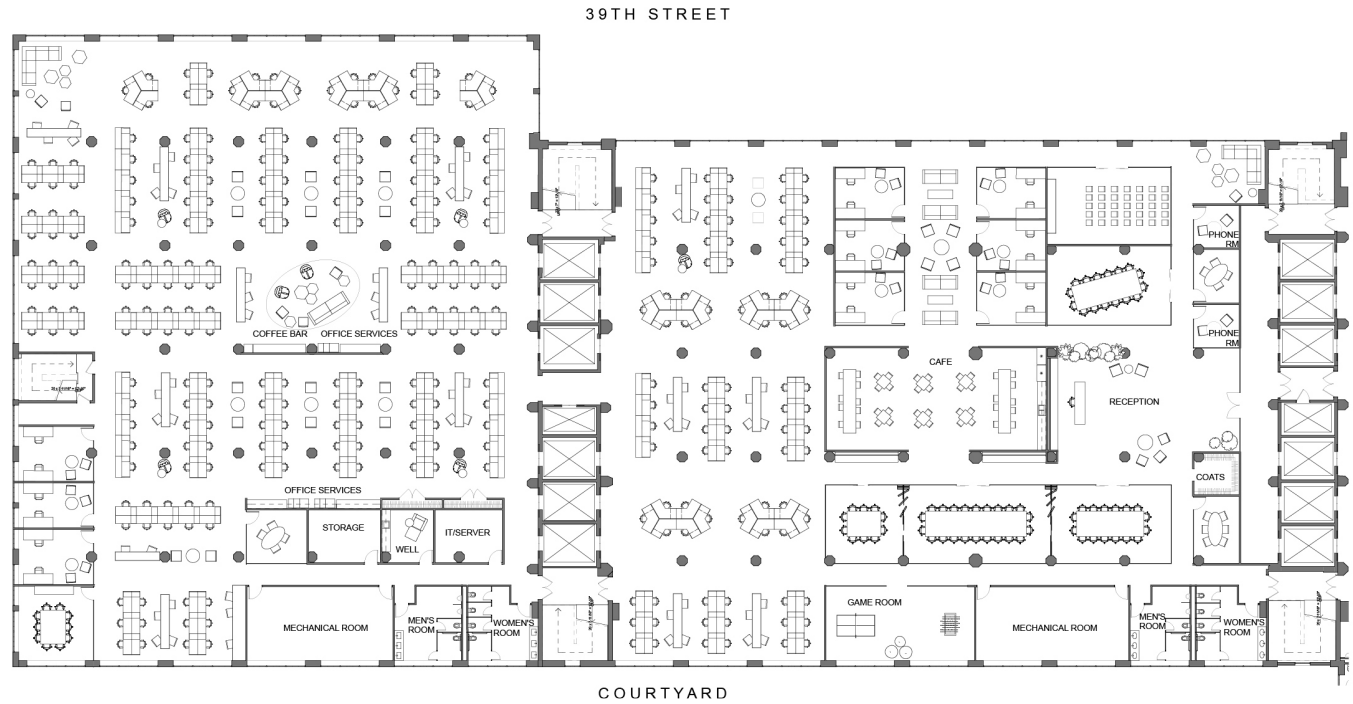


LEGEND

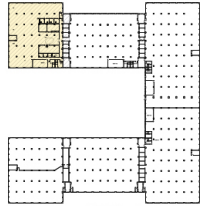
RSF	52,859
Total Seats	286
RSF/ Seats	173

Work Space	Size	Seats
Shared Office	140 sq. ft.	18
Benching	5'0" x 24"	225
Workstation	7'0" x 30"	42
Reception		1

Support	Count
Conference Room	5
Meeting Rooms	3
Phone Booths	2
Training Room	1
Wellness Room	1
Cafe	1
Game Room	1
Coffee Bar	1
Office Services	2
IT/Server Room	1
Storage	1
Open Collab Area	5
Hotel Bar	10
Training Room	1



KEY PLAN

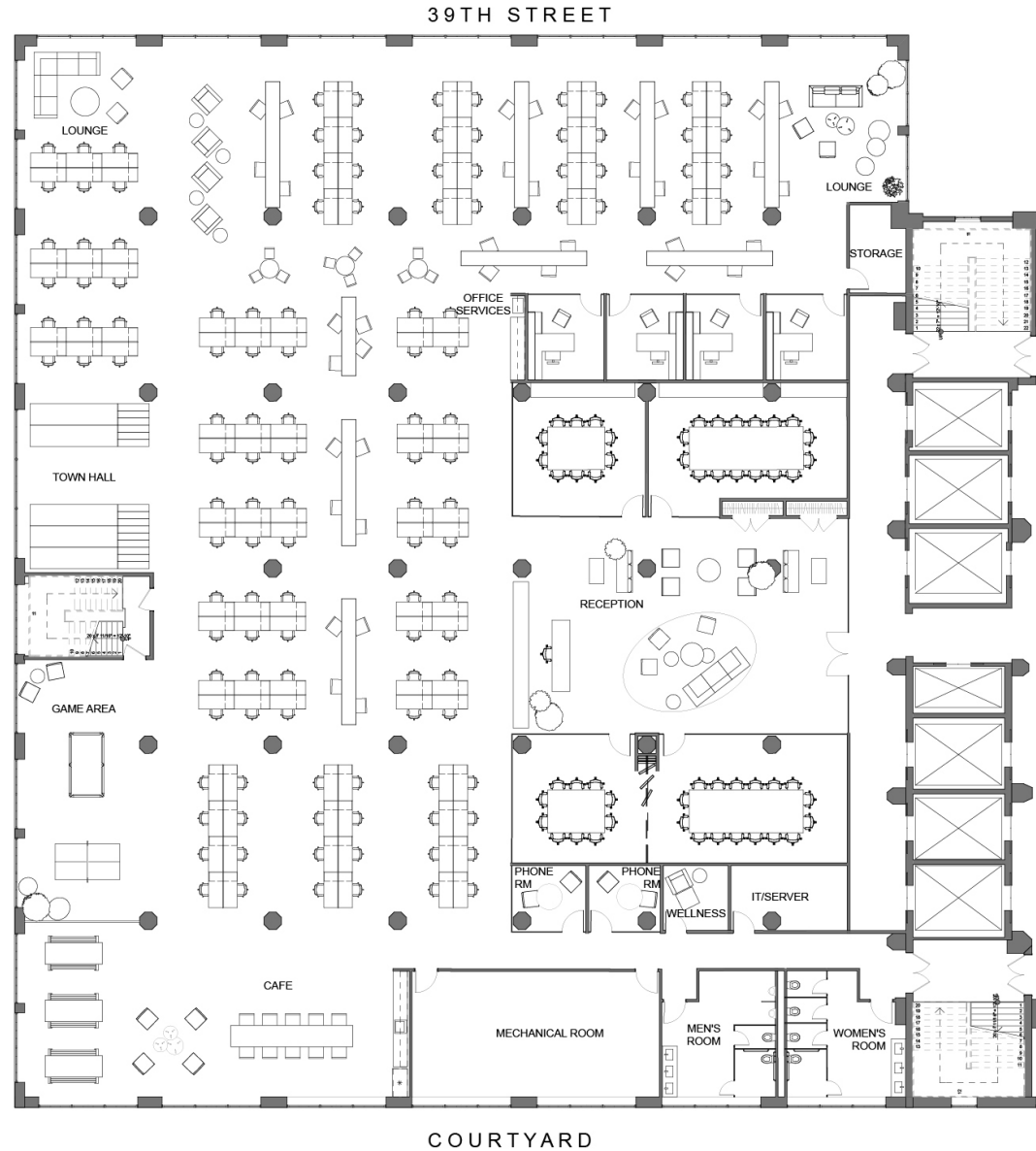


LEGEND

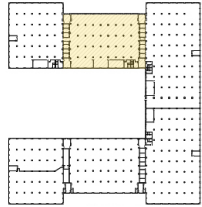
RSF	25,459
Total Seats	129
RSF/ Seats	185

Work Space	Size	Seats
Typical Office	120 sq. ft.	4
Benching	5'0" x 24"	124
Reception		1

Support		
Conference Room		4
Phone Booths		2
Wellness Room		1
Cafe		1
Game Area		1
Town Hall		1
Office Services		1
IT/Server Room		1
Open Collab/ Lounge		2
Hotel Bar		9
Open Meeting Tables		3



KEY PLAN

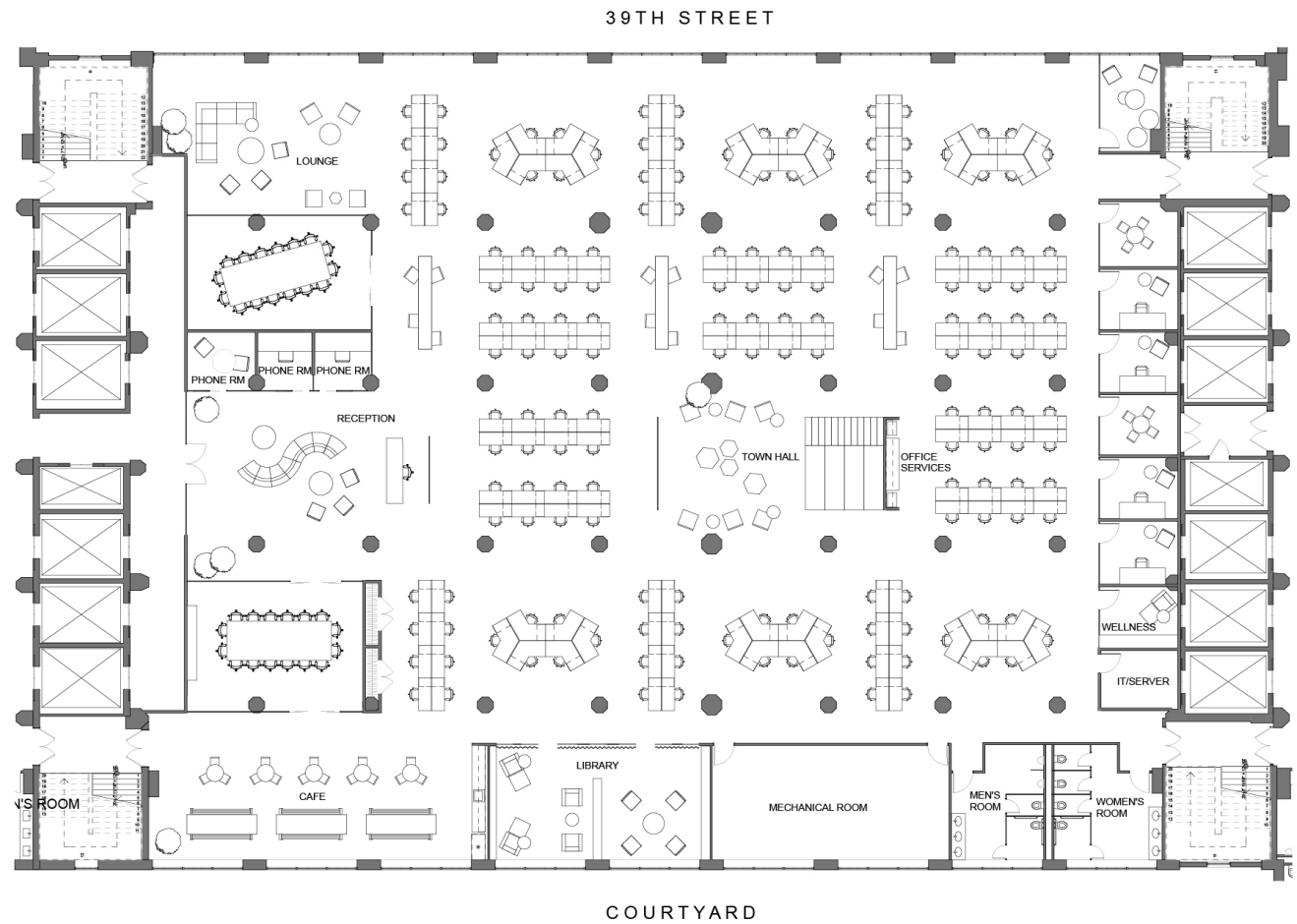


LEGEND

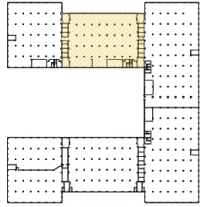
RSF	27,400
Total Seats	133
RSF/ Seats	193

Work Space	Size	Seats
Typical Office	100 sq. ft.	4
Benching	5'0" x 24"	128
Reception		1

Support	Count
Conference Room	2
Meeting Room	3
Phone Booths	3
Wellness Room	1
Cafe	1
Library	1
Town Hall	1
Office Services	1
IT/Server Room	1
Lounge	1
Hotel Bar	3



KEY PLAN

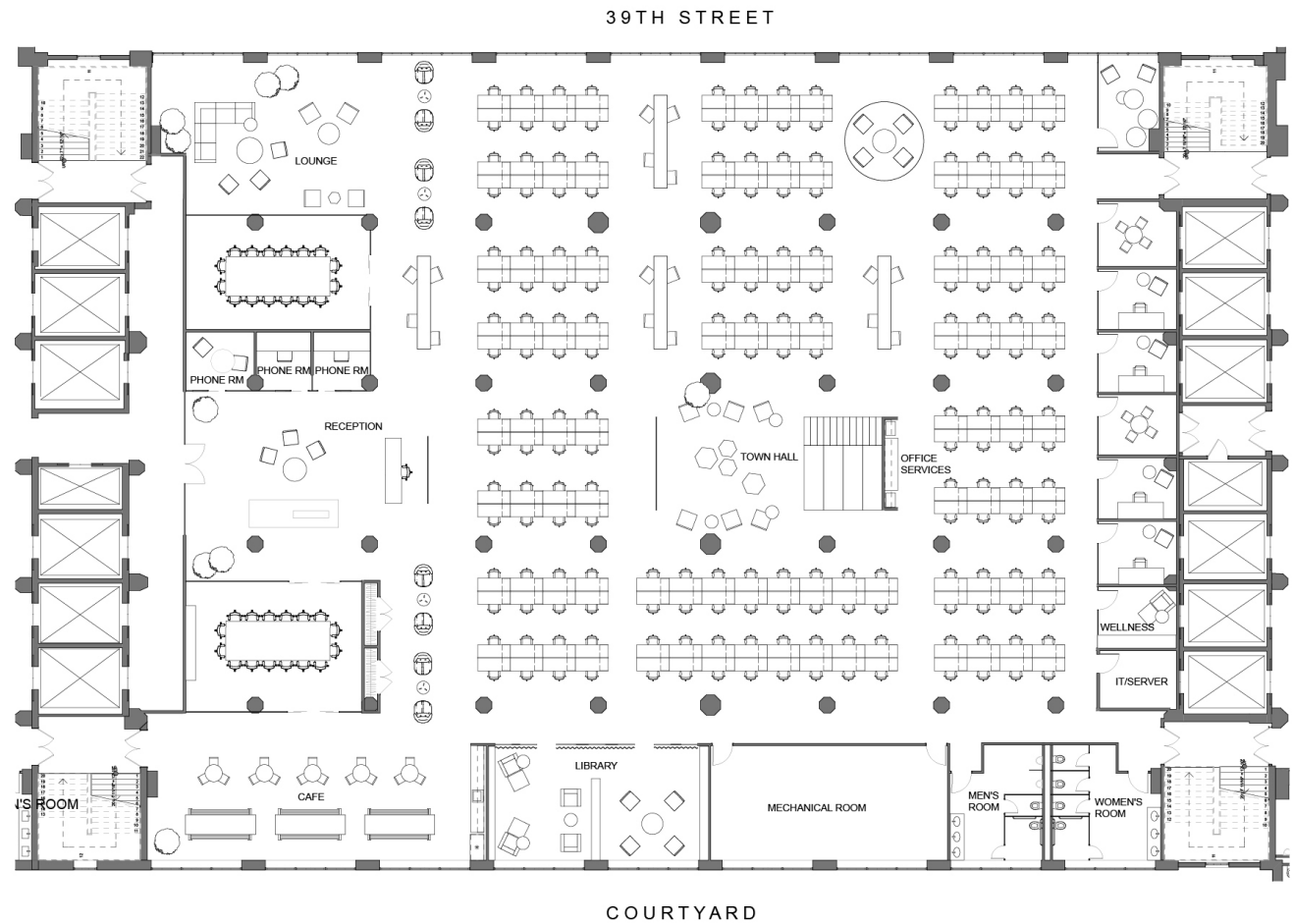


LEGEND

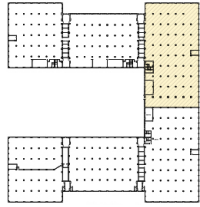
RSF	27,400
Total Seats	197
RSF/ Seats	130

Work Space	Size	Seats
Typical Office	100 sq. ft.	4
Benching	5'0" x 24"	192
Reception		1

Support	Seats
Conference Room	2
Meeting Room	3
Phone Booths	3
Wellness Room	1
Cafe	1
Library	1
Town Hall	1
Office Services	1
IT/Server Room	1
Lounge	1
Hotel Bar	4
Open Collab	1



KEY PLAN



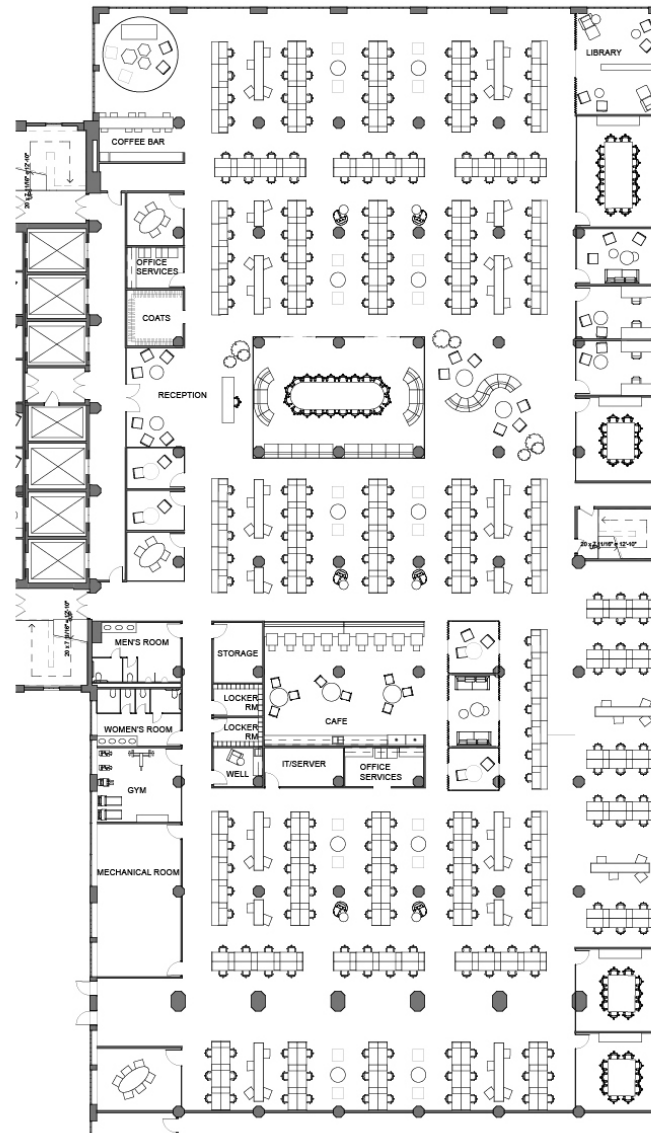
LEGEND

RSF	38,953
Total Seats	272
RSF / Seats	143

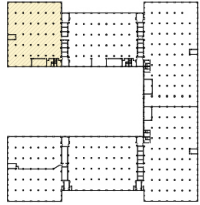
Work Space	Size	Seats
Shared Office	120 sq. ft.	4
Benching	5'0" x 24"	267
Reception		1

Support		
Conference Room		4
Meeting Room		7
Phone Room		2
Wellness Room		1
Cafe		1
Gym		1
Locker Rooms		2
Coffee Bar		1
Office Services		2
IT/Server Room		1
Hotel Bar		16

39TH STREET



KEY PLAN

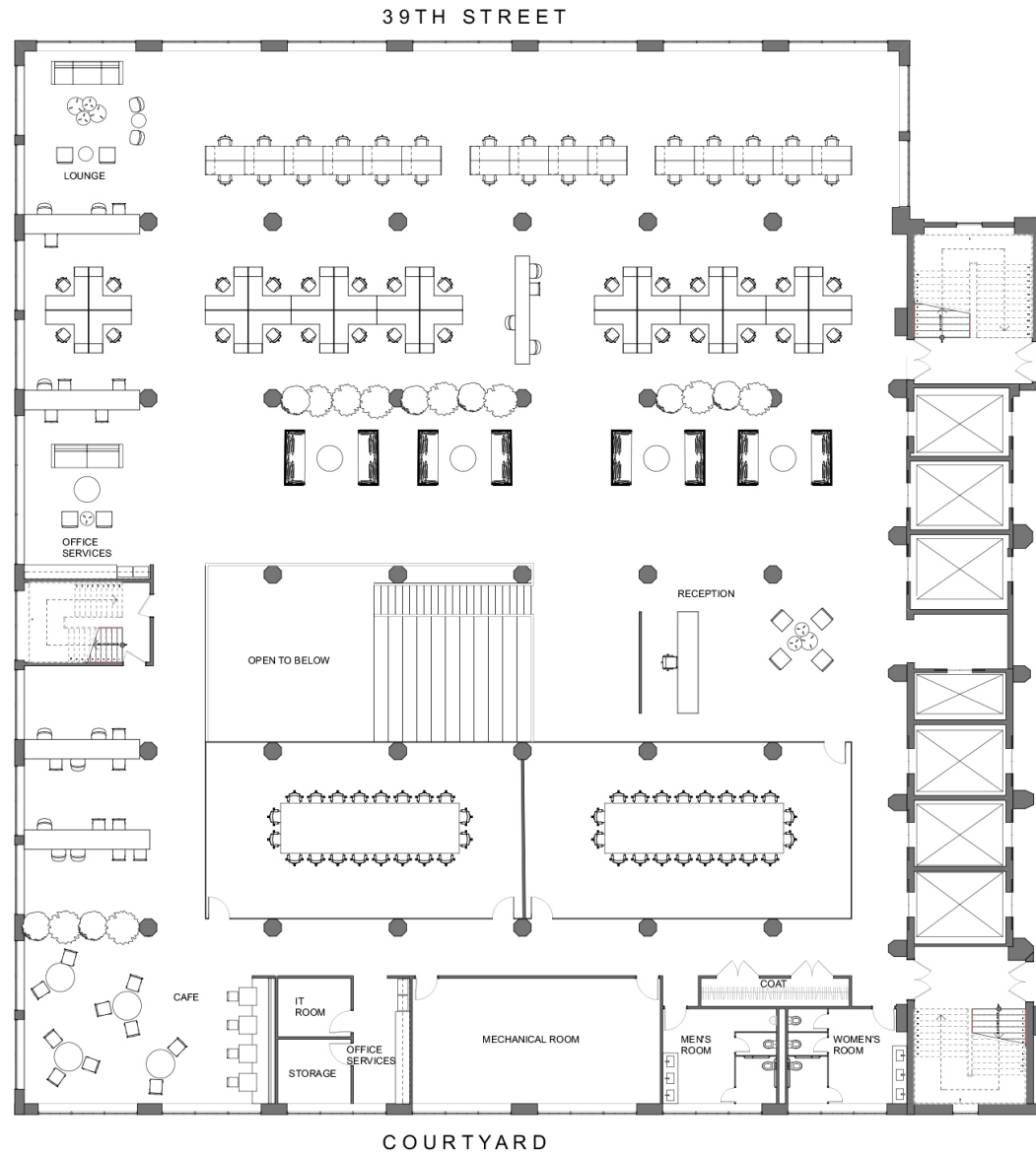


LEGEND

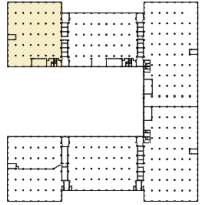
RSF	25,459
Total Seats	59
RSF / Seats	404

Work Space	Size	Seats
Workstation	6'0" x 24"	28
Benching	5'6" x 24"	30
Reception		1

Support	Seats
Conference Room	2
Open Meeting	5
Cafe	1
Lounge	1
Coat	1
Office Services	2
IT/ Server Room	1
Hotel Bar	5



KEY PLAN

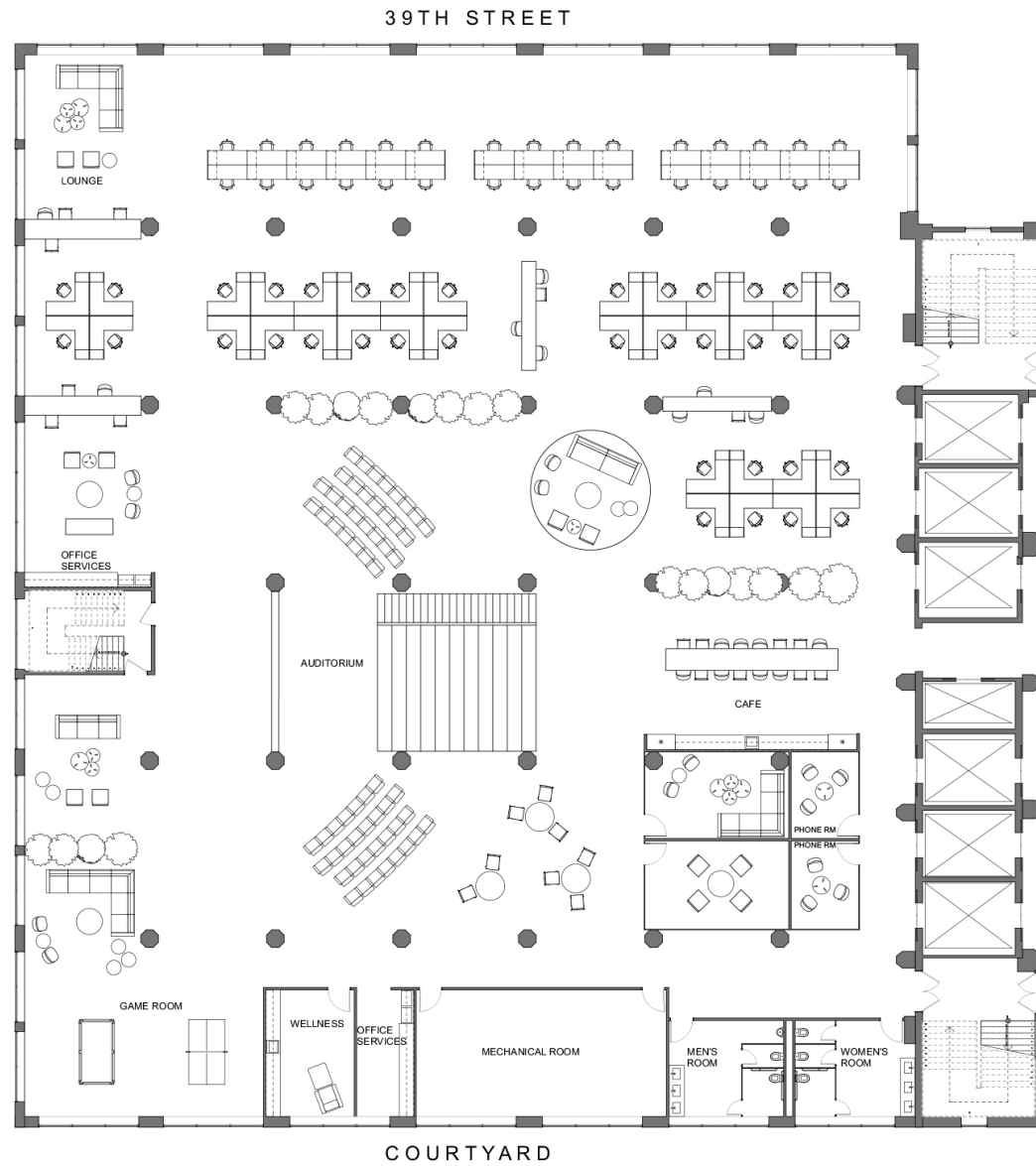


LEGEND

RSF	25,459
Total Seats	66
RSF / Seats	361

Work Space	Size	Seats
Workstation	6'0" x 24"	36
Benching	5'6" x 24"	30

Support	Seats
Open Meeting	5
Meeting Room	2
Wellness Room	1
Cafe	1
Auditorium	1
Game Room	1
Lounge	1
Office Services	2
Phone Room	2
Hotel Bar	4



INDUSTRY CITY TENANTS



INDUSTRY CITY BUILDING 19

CONTACT

David Falk

212.372.2271
dfalk@ngkf.com

Whitten Morris

646.441.3764
wmorris@ngkf.com

Kyle Ciminelli

212.372.2208
kciminelli@ngkf.com

Joseph Sipala

212.372.0702
jsipala@ngkf.com

Matthew Siegel

212.372.2045
msiegel@ngkf.com