

FOR SALE

INDUSTRIAL DEVELOPMENT OPPORTUNITY

825 TYRRELL

Gilberts, Illinois



PROPERTY HIGHLIGHTS



DESCRIPTION

- + +/- 19.54 acres
- + Full interchange to I-90 at Randall Road
- + Potential industrial development land
- + Lower Kane County taxes
- + PIN: 03-31-101-001
- + Taxes: \$3,645
- + Asking: \$5.25 per sqft
- + Please call for additional information



CONTACT US

TONY GANGE

Executive Vice President
+1 630 573 7030
tony.gange@cbre.com

MATT ISHIKAWA

First Vice President
+1 630 573 7368
matt.ishikawa@cbre.com

www.cbre.com/lsgoakbrook

CBRE

FOR SALE INDUSTRIAL DEVELOPMENT OPPORTUNITY

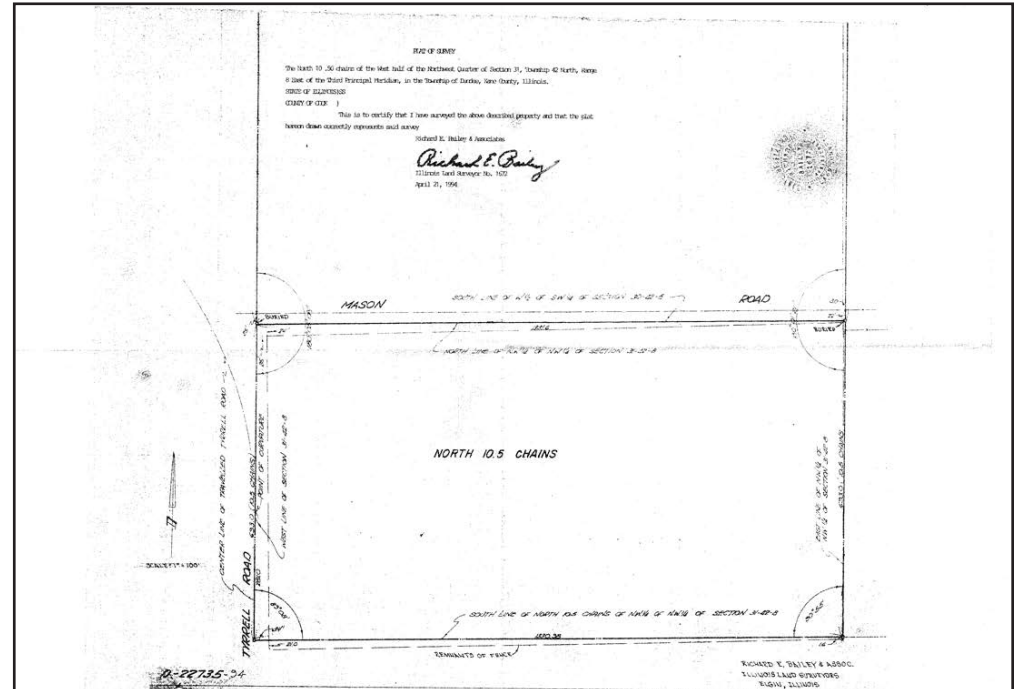
825 TYRRELL
Gilberts, Illinois



LOCATION MAP



SITE PLAN



DEMOGRAPHICS

- | | |
|--------------------|----------------------------|
| + Population | + Average Household Income |
| - 1 mile: 5,552 | - 1 mile: \$94,434 |
| - 3 miles: 30,491 | - 3 miles: \$97,906 |
| - 5 miles: 106,084 | - 5 miles: \$89,218 |

© 2016 CBRE, Inc. This information has been obtained from sources believed reliable. We have not verified it and make no guarantee, warranty or representation about it. Any projections, opinions, assumptions or estimates used are for example only and do not represent the current or future performance of the property. You and your advisors should conduct a careful, independent investigation of the property to determine to your satisfaction the suitability of the property for your needs. Photos herein are the property of their respective owners and use of these images without the express written consent of the owner is prohibited. CBRE and the CBRE logo are service marks of CBRE, Inc. and/or its affiliated or related companies in the United States and other countries. All other marks displayed on this document are the property of their respective owners.

www.cbre.com/lsgoakbrook

CBRE