

FOR LEASE

1695 CAMBRIDGE DR.

ELGIN, IL 60123

20,000 S.F. Air-Conditioned Bldg.

WELL DISTRIBUTED HEAVY POWER



8 MINUTES TO I-90 INTERCHANGE

Ideal Showroom-Distribution-Production Facility

PARKING:	28 SPACES	2 CORPORATE IMAGE ENTRANCES
OFFICE SIZE:	6,500 S.F. A/C Office-Showroom & Mezzanine	POWER: 1,200 AMP/480 VOLT
DOORS:	2 – Int. Depressed Dock & 2 - 12' X 14' DID	FULLY SPRINKLERED
CEILING HEIGHT:	20' CLEAR	BAYS: 36' X 40'

WELL LOCATED, HIGH IMAGE, WELL MAINTAINED FACILITY

For more information, please contact

G. Pat Ryan, SIOR, CRA Mobile: 847.361.7871

Email: gpat@ccrofchicago.com

Office: 2413 W. Algonquin Rd. * Suite 416 * Algonquin, IL 60102

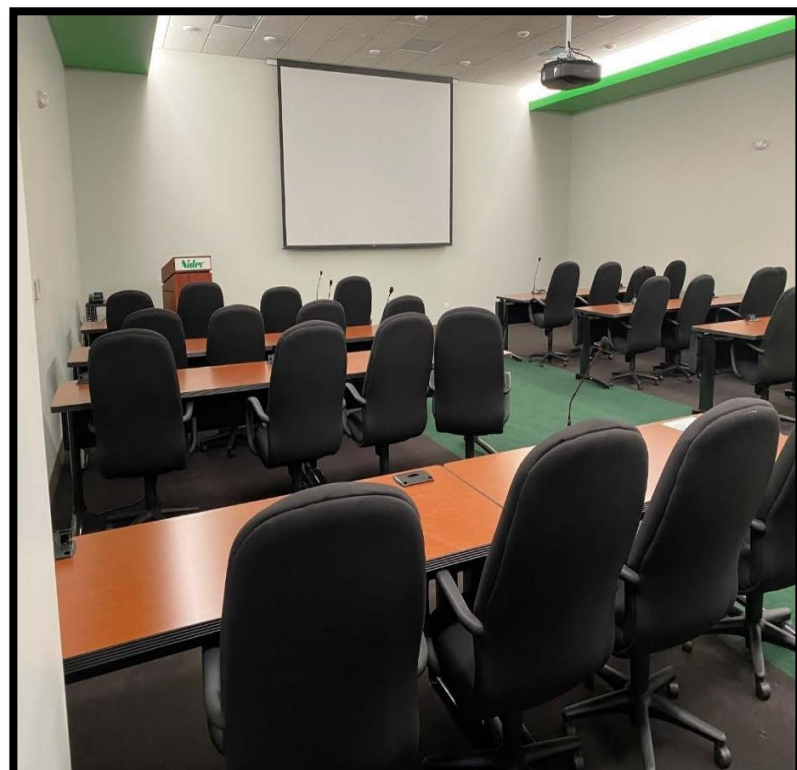
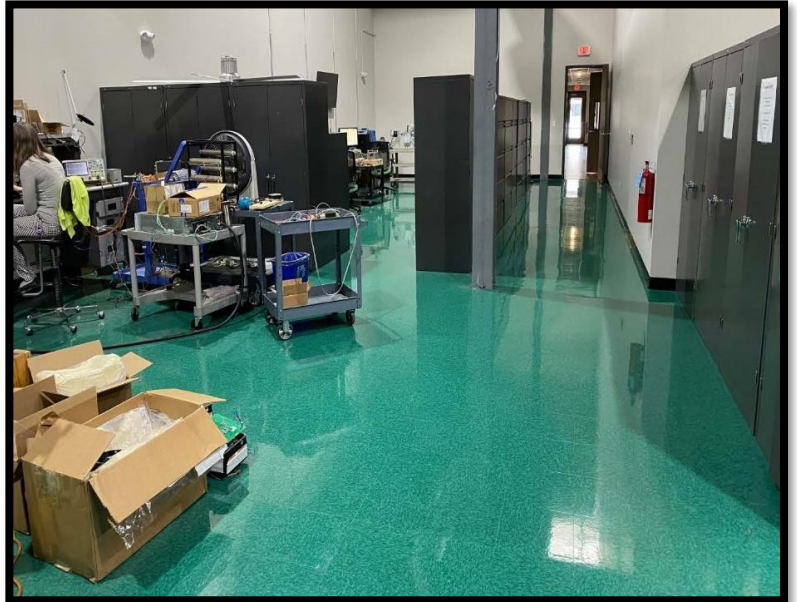
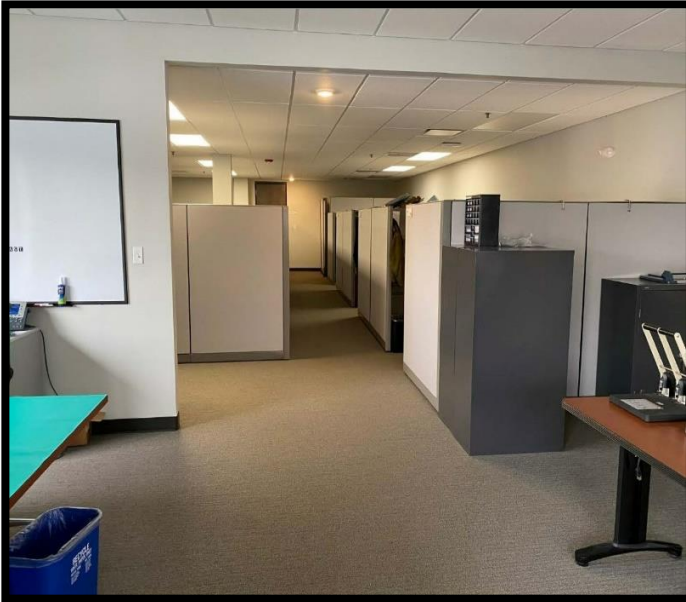
All information herein is from sources deemed reliable and is submitted subject to errors omissions and to change of price or terms without notice.

FOR LEASE

1695 CAMBRIDGE DR.

ELGIN, IL 60123

20,000 Square Foot Flex Bldg.



8 MINUTES TO I-90 INTERCHANGE Contact G. Pat Ryan 847-361-7871