

5250 W 94TH TERR

PRAIRIE VILLAGE, KS 66207



REECE

COMMERCIAL REAL ESTATE

a Berkshire Hathaway Affiliate

FOR LEASE



**JIM
THOME**



913.548.8700



JTHOME@REECECOMMERCIAL.COM

- GREAT LOCATION IN THE PEDIATRIC ORTHOPEDIC SURGERY ASSOCIATES BUILDING
- WEST 2 ROOM SUITE - \$800/MO - FS
 - 384 SQFT: \$640/MO - FS
 - 317 SQFT: \$625/MO - FS
- NEXT TO MEADOWBROOK PARK
- FULL SERVICE - DOES NOT INCLUDE PHONE

DEMOGRAPHICS

	1 Mile	3 Mile	5 Mile
2023 POPULATION	11,535	89,255	754,997
2023 MED HOUSEHOLD INCOME	\$91,156	\$84,854	\$74,321

The information above has been obtained from sources believed reliable. While we do not doubt its accuracy we have not verified it and make no guarantee, warranty or representation about it. It is your responsibility to independently confirm its accuracy and completeness. Any projections, opinions, assumptions, or estimates used are for example only and do not represent the current or future performance of the property. You and your advisors should conduct a careful, independent investigation of the property to determine to your satisfaction the suitability of the property for your needs. © 2020

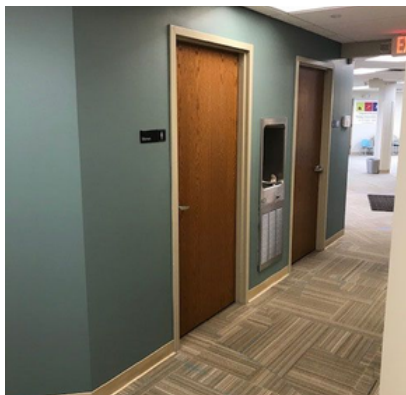
5250 W 94TH TERR

PRAIRIE VILLAGE, KS 66207



REECE
COMMERCIAL REAL ESTATE

a Berkshire Hathaway Affiliate



**JIM
THOME**



913.548.8700



JTHOME@REECECOMMERCIAL.COM

The information above has been obtained from sources believed reliable. While we do not doubt its accuracy we have not verified it and make no guarantee, warranty or representation about it. It is your responsibility to independently confirm its accuracy and completeness. Any projections, opinions, assumptions, or estimates used are for example only and do not represent the current or future performance of the property. You and your advisors should conduct a careful, independent investigation of the property to determine to your satisfaction the suitability of the property for your needs. © 2020

5250 W 94TH TERR

PRAIRIE VILLAGE, KS 66207



REECE

COMMERCIAL REAL ESTATE

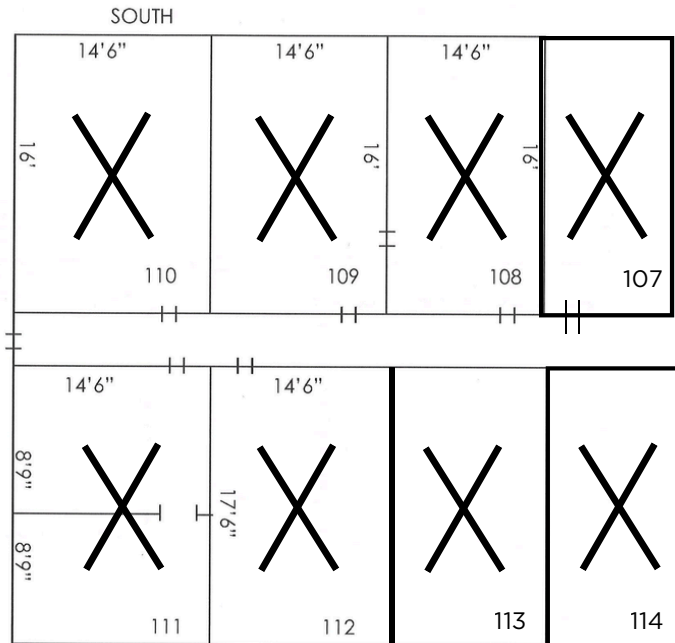
a Berkshire Hathaway Affiliate

South Spaces - 3

Actual 232 SF
+ 25% - 290 SF Gross
\$625/MO

North Spaces - 1

Actual 253 SF
+ 25% - 317 SF Gross
\$640/MO



JIM THOME



913.548.8700



JTHOME@REECECOMMERCIAL.COM

5250 W 94TH TERR

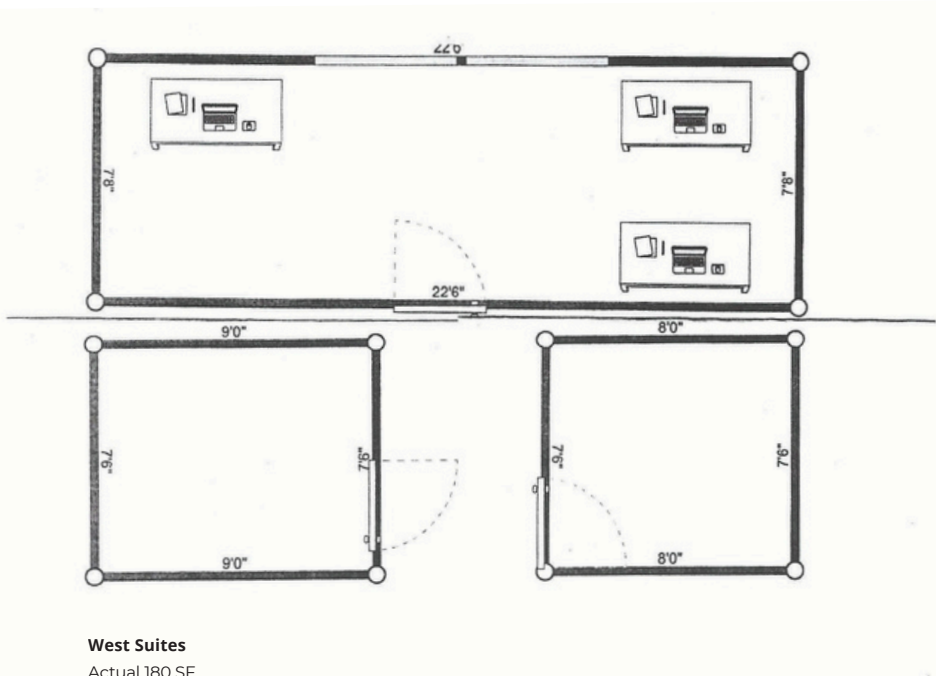
PRAIRIE VILLAGE, KS 66207



REECE

COMMERCIAL REAL ESTATE

a Berkshire Hathaway Affiliate



West Suites

Actual 180 SF

384 SF Gross @ \$20/SF = \$800/MO



**JIM
THOME**



913.548.8700



JTHOME@REECECOMMERCIAL.COM

The information above has been obtained from sources believed reliable. While we do not doubt its accuracy we have not verified it and make no guarantee, warranty or representation about it. It is your responsibility to independently confirm its accuracy and completeness. Any projections, opinions, assumptions, or estimates used are for example only and do not represent the current or future performance of the property. You and your advisors should conduct a careful, independent investigation of the property to determine to your satisfaction the suitability of the property for your needs. © 2020

5250 W 94TH TERR

PRAIRIE VILLAGE, KS 66207



REECE
COMMERCIAL REAL ESTATE

a Berkshire Hathaway Affiliate



**JIM
THOME**



913.548.8700



JTHOME@REECECOMMERCIAL.COM

The information above has been obtained from sources believed reliable. While we do not doubt its accuracy we have not verified it and make no guarantee, warranty or representation about it. It is your responsibility to independently confirm its accuracy and completeness. Any projections, opinions, assumptions, or estimates used are for example only and do not represent the current or future performance of the property. You and your advisors should conduct a careful, independent investigation of the property to determine to your satisfaction the suitability of the property for your needs. © 2020