

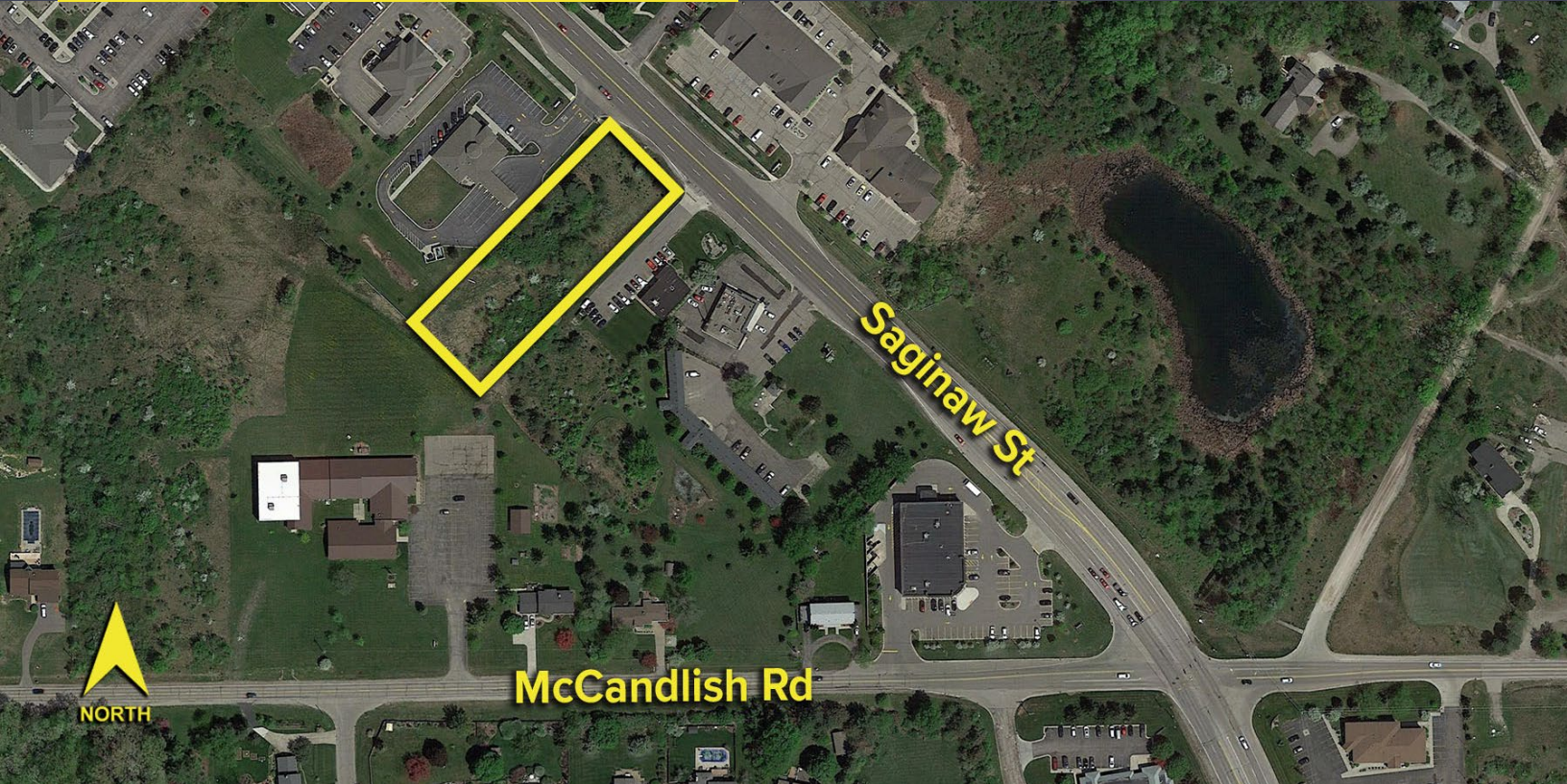
8260 SAGINAW STREET
GRAND BLANC TWP., MICHIGAN

LAND FOR SALE
1.30 Acres Available



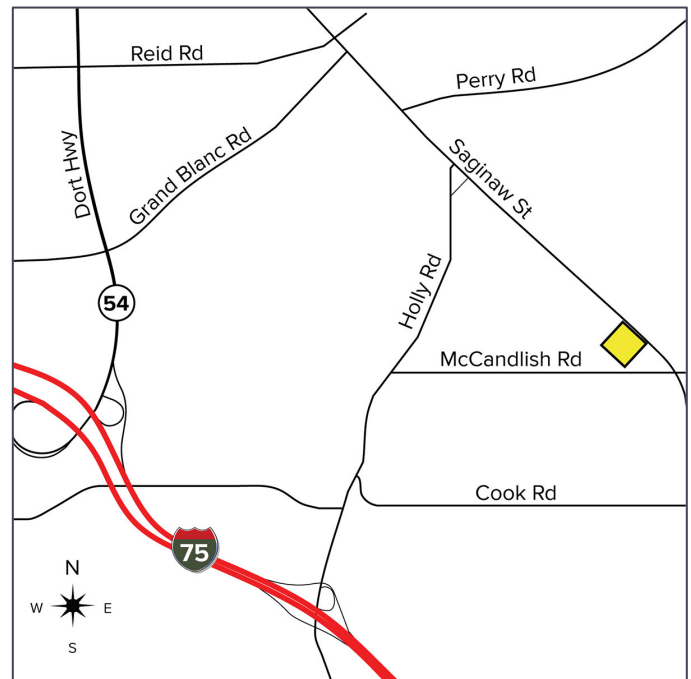
**SIGNATURE
ASSOCIATES**
KNOW SIGNATURE | KNOW RESULTS

DEVELOPMENT LAND



PROPERTY FEATURES

- 1.30 acres available
- Zoned Commercial
- All utilities available at site
- Ideal for mixed-use establishments which makes the land great for new development
- Sale Price: \$225,000 (\$173,076.92/acre)



For more information, please contact:

MARVIN PETROUS

(248) 359 0647

mpetrous@signatureassociates.com

GARY STEPHENS

(248) 948 0104

gstephens@signatureassociates.com

SIGNATURE ASSOCIATES

One Towne Square, Suite 1200

Southfield, MI 48076

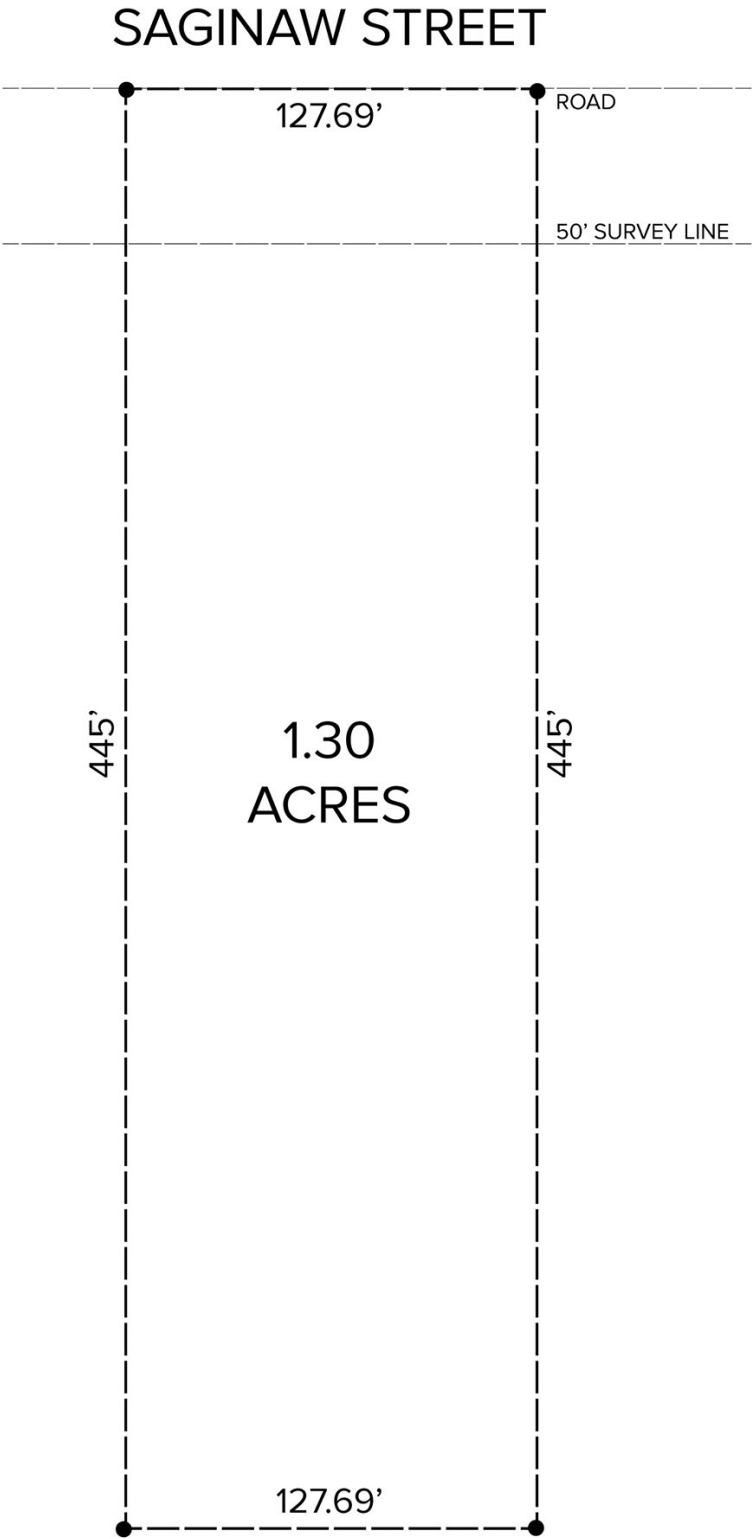
www.signatureassociates.com

8260 Saginaw Street – Grand Blanc Twp., Michigan

Land For Sale

1.30
Acres
AVAILABLE

Site Plan



For more information, please contact:

MARVIN PETROUS
(248) 359 0647
mpetrous@signatureassociates.com

GARY STEPHENS
(248) 948 0104
gstephens@signatureassociates.com

SIGNATURE ASSOCIATES
One Towne Square, Suite 1200
Southfield, MI 48076
www.signatureassociates.com

Information is subject to verification and no liability for errors or omissions is assumed. Price is subject to change and listing withdrawal.

8260 Saginaw Street – Grand Blanc Twp., Michigan

Land For Sale

1.30
Acres
AVAILABLE

Labeled Aerial



For more information, please contact:

MARVIN PETROUS

(248) 359 0647

mpetrous@signatureassociates.com

GARY STEPHENS

(248) 948 0104

gstephens@signatureassociates.com

SIGNATURE ASSOCIATES

One Towne Square, Suite 1200

Southfield, MI 48076

www.signatureassociates.com