



LONDON
SQUARE

WORKS

UNIT 2

THE CROSSE

AT THE PICKLE FACTORY
BERMONDSEY, SE1

11,000 SQ FT OF NEWLY DEVELOPED COMMERCIAL SPACE



On the site of the former Crosse and Blackwell factory - home of Branston Pickle - The Crosse is the first commercial phase of a major redevelopment of the 4.7 acre site, combining the regeneration of traditional warehouses and new build state of the art, contemporary retail space.

The overall development will provide a new, vibrant community with open squares and public spaces. The development will host a major new art gallery along with artists studios and is only minutes from the buzz of the bars and restaurants of Bermondsey Street.

The Crosse offers 5,962 sq ft of retail units. The units have been designed to offer a variety of sizes but they can easily be combined to provide larger space over two floors.

UNIT 2 – RETAIL |

The unit will be handed over in shell condition with capped off services to include water and 3 phase electricity.



UNIT 2 - RETAIL

The Crosse contains 3 retail units which are available for lease or purchase with the opportunity for duplex offers. Available from Q2 2021.

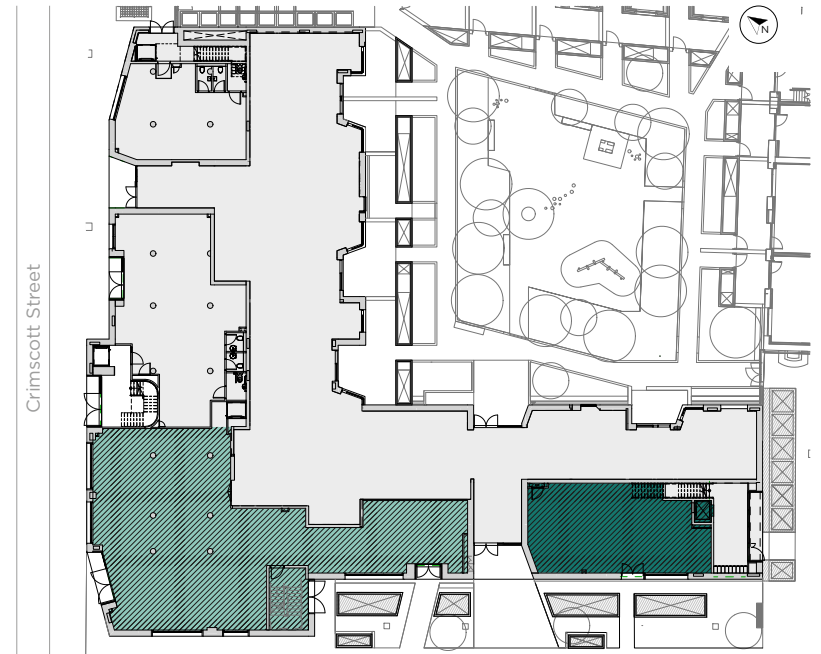
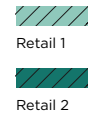
Retail

Unit	Total Area	
Retail 1 - Ground Floor *LET TO CO-OP	3,013 sq ft	280 sq m
Retail 1 - First Floor *LET TO CO-OP	1,905 sq ft	177 sq m
Retail 2 - Ground Floor	1,044 sq ft	97 sq m
Total Retail	5,962 sq ft	554 sq m

All floor areas are subject to final measurement upon completion of refurbishment

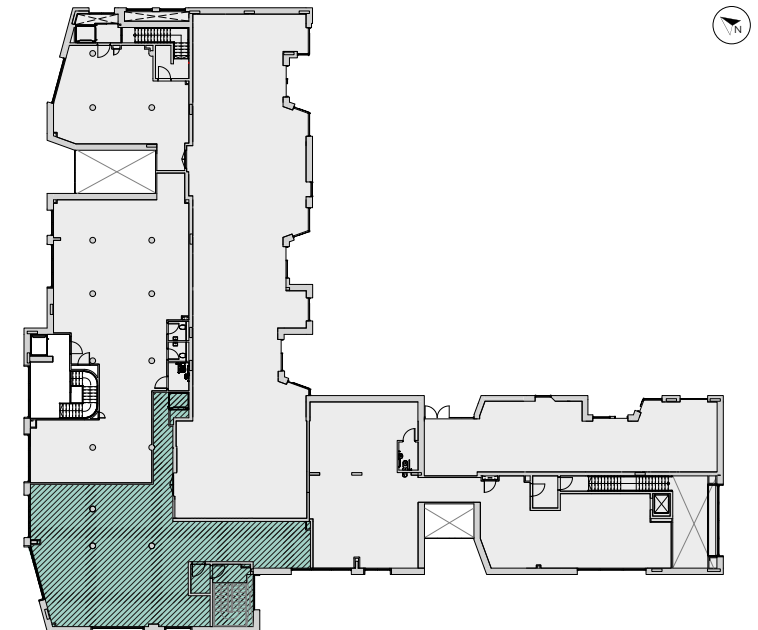
GROUND FLOOR

Ground Floor
1,044 – 3,013 sq ft

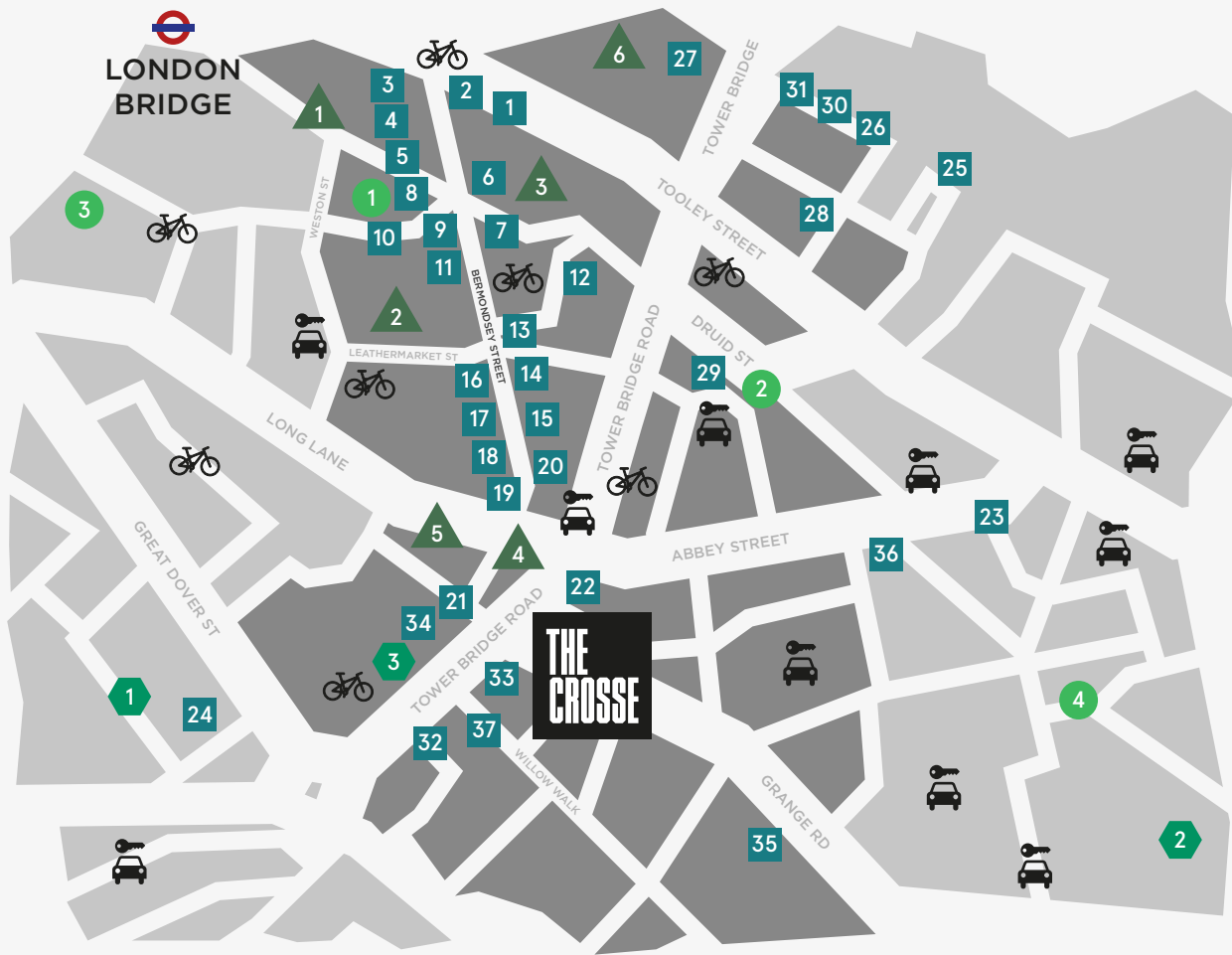


FIRST FLOOR

First Floor
1,905 sq ft



THE LOCATION



- 1 Kin + Deum
- 2 Black Swan Yard Coffee
- 3 The Hide Bar
- 4 Tanner & co
- 5 Chapter 72
- 6 Gidder Grocer
- 7 The Garrison
- 8 B Street Delhi
- 9 Comptoir Gourmand
- 10 The Woolpack
- 11 José
- 12 Pique-Nique
- 13 Fuckoffee
- 14 Loyal Tavern
- 15 Hakata
- 16 Café Murano
- 17 Pizarro
- 18 Two One Four
- 19 Flour & Grape
- 20 Watch House
- 21 Hej Coffee
- 22 Bermondsey Arts Club
- 23 Bone Daddies
- 24 Sip and Sawdust
- 25 Blueprint Café
- 26 Le Pont de la Tour
- 27 The Ivy Tower Bridge
- 28 The Kings Arms
- 29 Doodle bar
- 30 Chop House
- 31 Watch House Tower Bridge
- 32 Ole Navarro
- 33 Iro Sushi
- 34 M.Manze
- 35 The Grange Pub
- 36 Brew by Numbers
- 37 The Victoria



- 1 Peter Layton Glassblowing
- 2 White Cube
- 3 Fashion and Textile Museum
- 4 Kino Bermondsey
- 5 Bermondsey Antique Market
- 6 London Bridge Theatre



- 1 Go Mammoth
- 2 CrossFit Bermondsey
- 3 MoreYoga



- 1 Vinegar Yard
- 2 Maltby Street Market
- 3 Tabard Street Food Market
- 4 Spa Terminus

CONTACT DETAILS

DEVELOPER



COMMERCIAL CONSULTANTS



ARCHITECTS



**ALLFORD
HALL
MONAGHAN
MORRIS**

AGENTS



Flora Young
flora.young@eu.jll.com
020 7087 5886

Lydia Pattihis
lydia.pattihis@eu.jll.com
020 7399 5853



Neil Davies
nd@unionstreetpartners.co.uk
020 3757 7777

Please note that all images including Computer Generated Images (CGI's) are for illustrative and indicative purposes only and are subject to change. Furniture is not included with the purchase. Travel times and distances are approximate and are sourced from www.citymapper.com

Subject to contract. Union Street Partners & JLL for themselves and the vendor of this property give notice that these particulars do not form, or form part of, any offer or contract. They are intended to give fair description of the property and whilst every effort has been made to ensure their accuracy this cannot be guaranteed. Any intending purchaser must therefore satisfy themselves by inspection or otherwise. Neither Union Street Partners & JLL, nor any of its employees, has any authority to make or give any further representations or warranty whatsoever in relation to this property. All prices and rents quoted are net of VAT.

WWW.THECROSSEBERMONDSEY.CO.UK