

FOR LEASE

# HUDSON DRIVE BUSINESS CAMPUS

1051 & 1151

CAMPUS DRIVE

Stow, Ohio 44224



## PROPERTY DETAILS

- + Single Story
- + Located on Campus Drive at Hudson Drive in Stow
- + Excellent access to Rte 8 at Seasons Rd and Steels Corners Rd
- + \$40/SF tenant allowance offered
- + Offices to suit
- + Tax abatements available
- + High quality construction
- + \$16.75 NNN

### 1051

- + Minimum leasable area: 3,000 SF,  
Maximum total size: 15,842 SF

### 1151

- + Size: 3,574 SF available



## CONTACT US

### Dean Bacopoulos

Senior Associate  
+1 330 670 4405  
dean.bacopoulos@cbre.com

### Steve Lazarides

Senior Associate  
+1 330 670 4410  
steve.lazarides@cbre.com

### Michael Toth

Senior Associate  
+1 216 363 6422  
michael.toth@cbre.com

### CBRE INC.

3421 Ridgewood Road, Suite 150  
Akron, Ohio 44333  
www.cbre.com

[www.cbre.com/akron-canton](http://www.cbre.com/akron-canton)

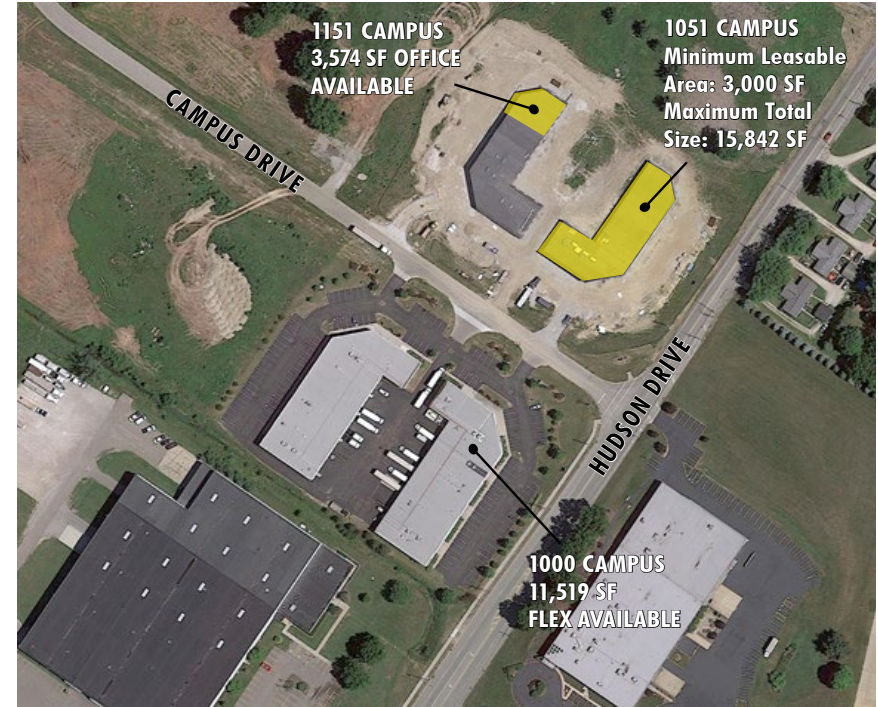
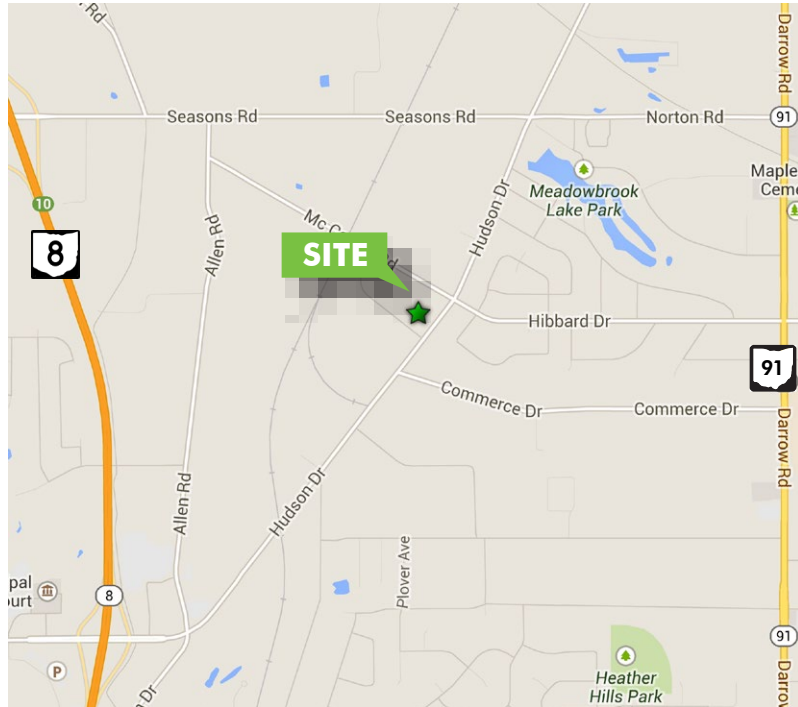
**CBRE**

# FOR LEASE HUDSON DRIVE BUSINESS CAMPUS

1051 & 1151  
HUDSON DRIVE  
Stow, Ohio 44224



## MAP/AERIAL



© 2017 CBRE, Inc. This information has been obtained from sources believed reliable. We have not verified it and make no guarantee, warranty or representation about it. Any projections, opinions, assumptions or estimates used are for example only and do not represent the current or future performance of the property. You and your advisors should conduct a careful, independent investigation of the property to determine to your satisfaction the suitability of the property for your needs. Photos herein are the property of their respective owners and use of these images without the express written consent of the owner is prohibited. CBRE and the CBRE logo are service marks of CBRE, Inc. and/or its affiliated or related companies in the United States and other countries. All other marks displayed on this document are the property of their respective owners. Licensed Real Estate Broker

[www.cbre.com/akron-canton](http://www.cbre.com/akron-canton)

**CBRE**