



OFFERING SUMMARY

Available SF: 6,309 SF

Lease Rate (Per Month): \$18/SF (NNN)

Lot Size: 0.16 Acres

Taxes: \$504/mo

Zoned: CCFB

PROPERTY HIGHLIGHTS

- Building Renovation Planned - Rendering Featured Above (interior walls taken down to the studs)
- Located in Historic Downtown Norman on the Corner of W Main Street & Webster Avenue
- Surrounding Businesses Include: Republic Bank, U.S. Post Office, Benvenuti's, Scratch Kitchen & Cocktails, and more.
- New Roof Installed (2020) with a 20-year Warranty - Potential for a Rooftop Bar
- Ample Street Parking on W Main St, Side Streets, & Northwest of Property
- Judy J. Hatfield, Broker / Owner

DEMOGRAPHICS

	1 MILE	3 MILES	5 MILES
Total Households	5,558	34,718	45,885
Total Population	12,594	90,153	122,625
Average HH Income	\$50,343	\$64,854	\$75,345

JUDY J. HATFIELD, CCIM

Equity Commercial Realty Advisors, LLC
jjhatfield@ccim.net

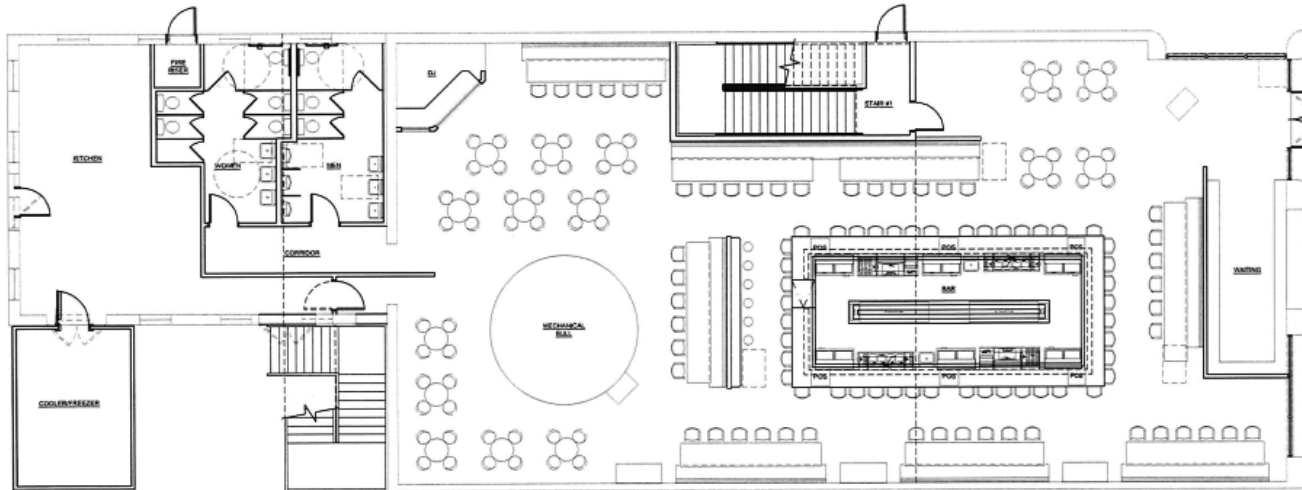
(405) 640- 6167 cell
(405) 364- 5300 office



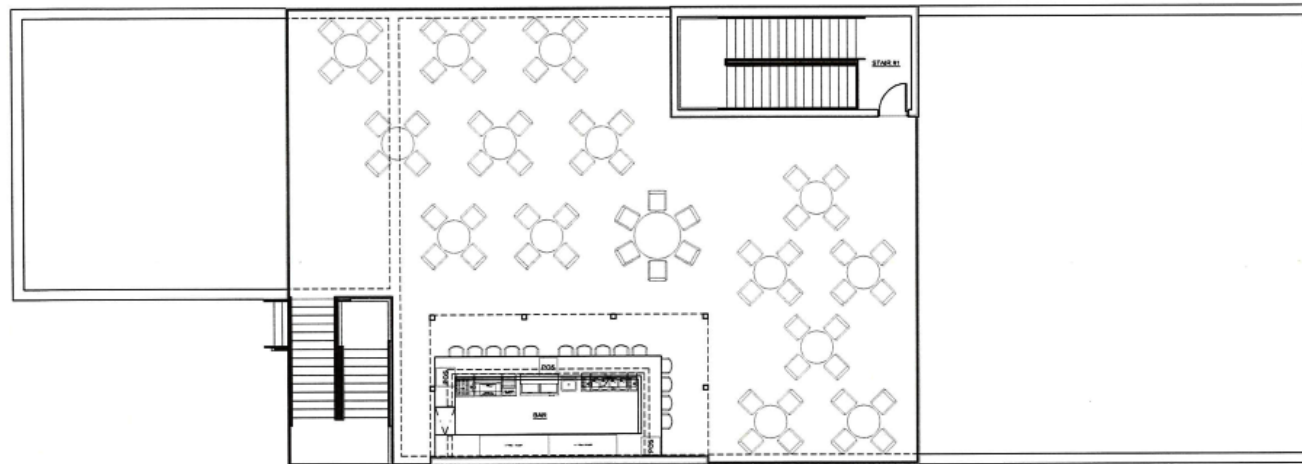
JUDY J. HATFIELD, CCIM

Equity Commercial Realty Advisors, LLC
jjhatfield@ccim.net

(405) 640- 6167 cell
(405) 364- 5300 office



PROPOSED
FIRST FLOOR
SCALE 3/16" = 1'-0"



PROPOSED
ROOF TOP
SCALE 3/16" = 1'-0"

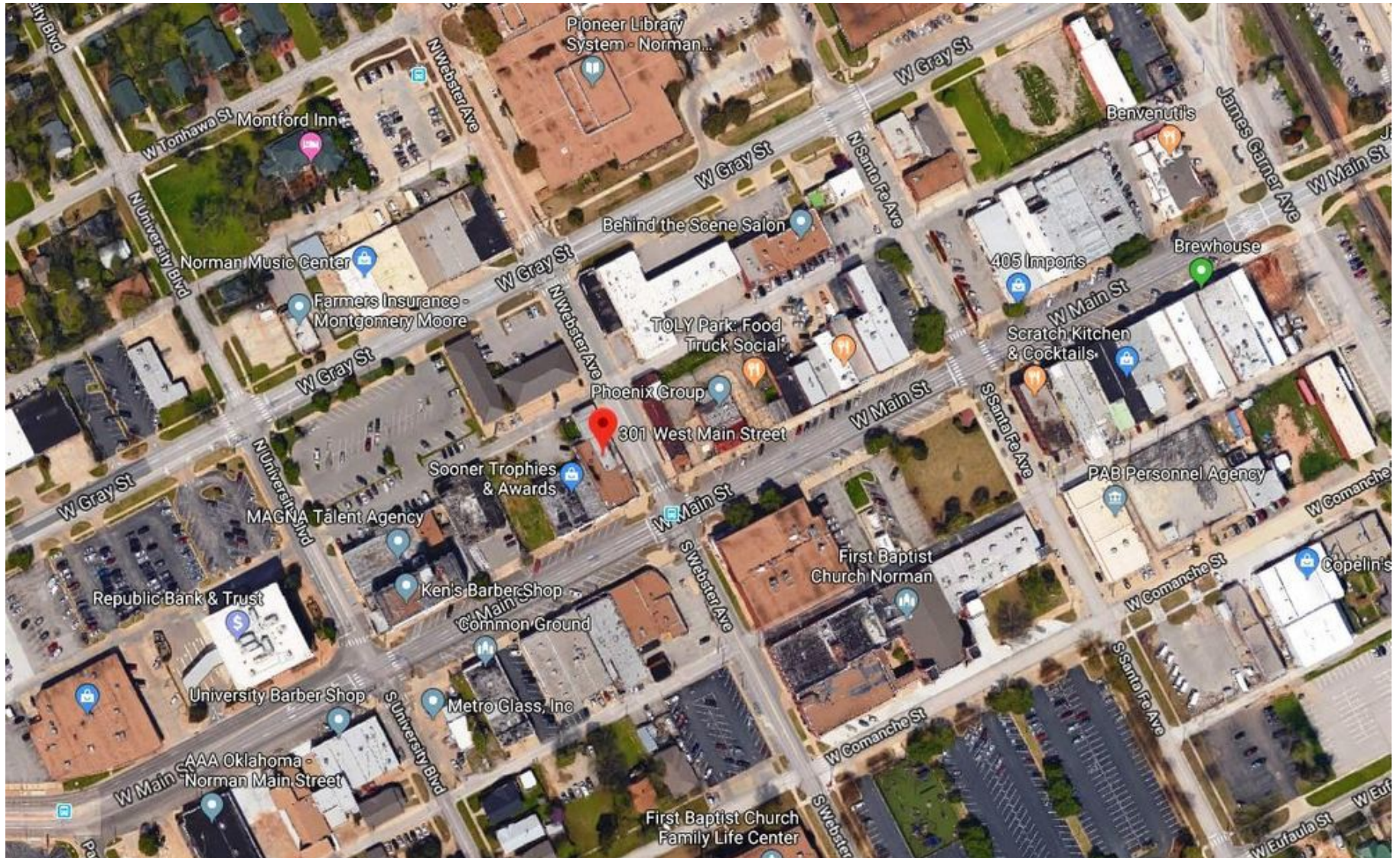
JUDY J. HATFIELD, CCIM

Equity Commercial Realty Advisors, LLC
jjhatfield@ccim.net

(405) 640- 6167 cell
(405) 364- 5300 office

301 W MAIN STREET

NORMAN, OK 73069



JUDY J. HATFIELD, CCIM

Equity Commercial Realty Advisors, LLC
jjhatfield@ccim.net

(405) 640-6167 cell
(405) 364-5300 office