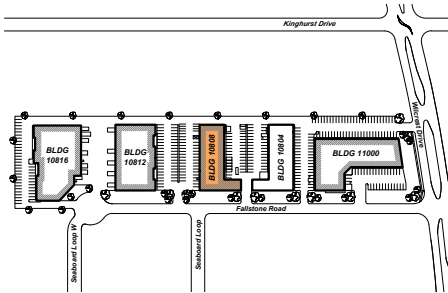


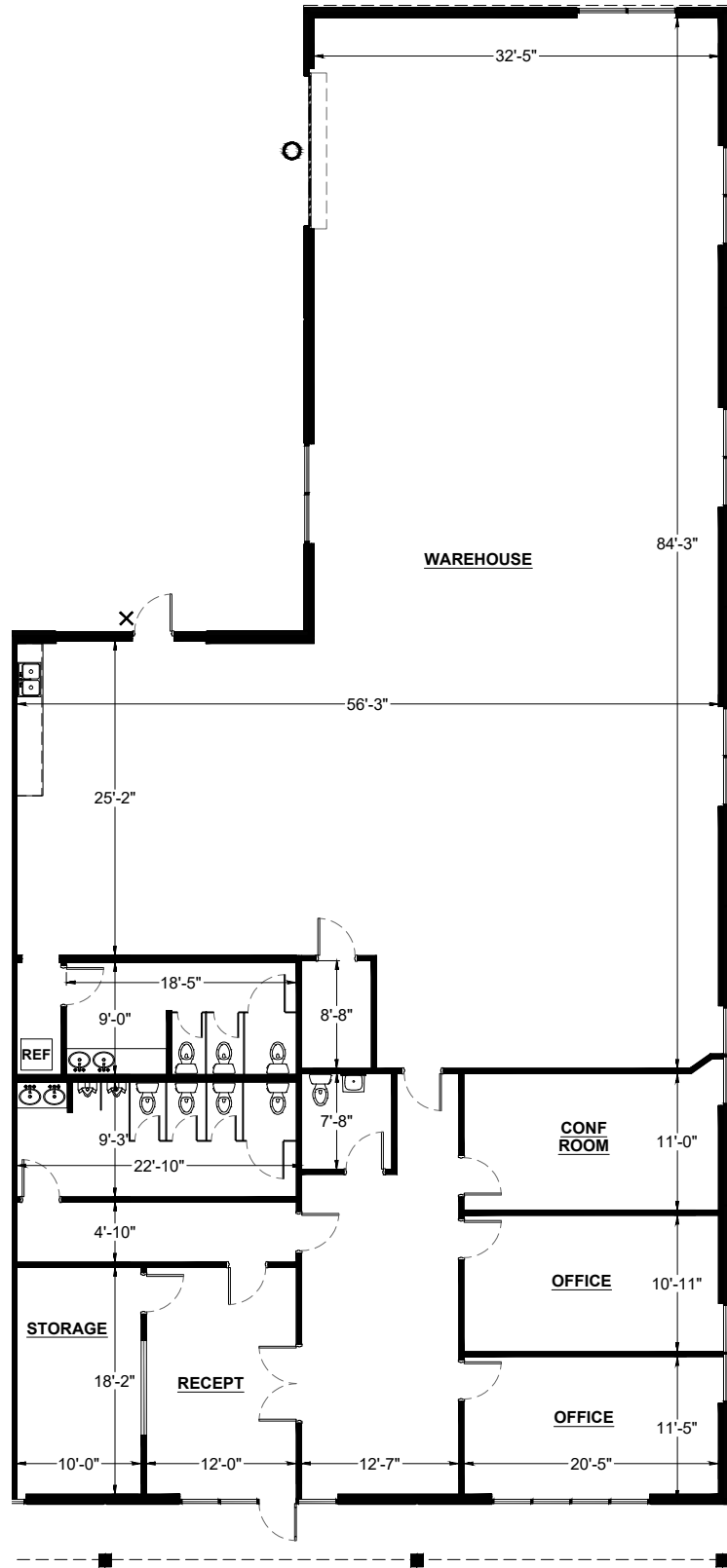
SUITE DATA:

OFFICE	2,336 SF
ASSEMBLY	3,590 SF
TOTAL	5,926 SF
CLEAR HEIGHT	13'-3" - 14'-0"
○ GRADE LEVEL DOORS	1
× INFILL PANEL	1

SITE KEY PLAN:



BUILDING KEY PLAN:



Stonecrest Business Park

10808 Fallstone Road
Houston, TX 77099

Bldg. 10808
STE 300

07/09/25