



10640 W 87TH ST • OVERLAND PARK, KS

PROPERTY DETAILS

Office/Medical Space

2,000 - 4,000 RSF

\$15.00 PSF + Utilities

Monument Signage Opportunity Visible
to 26,459 CPD

Excellent Highway Access

Short Drive to Downtown Overland Park
Restaurant and Shops

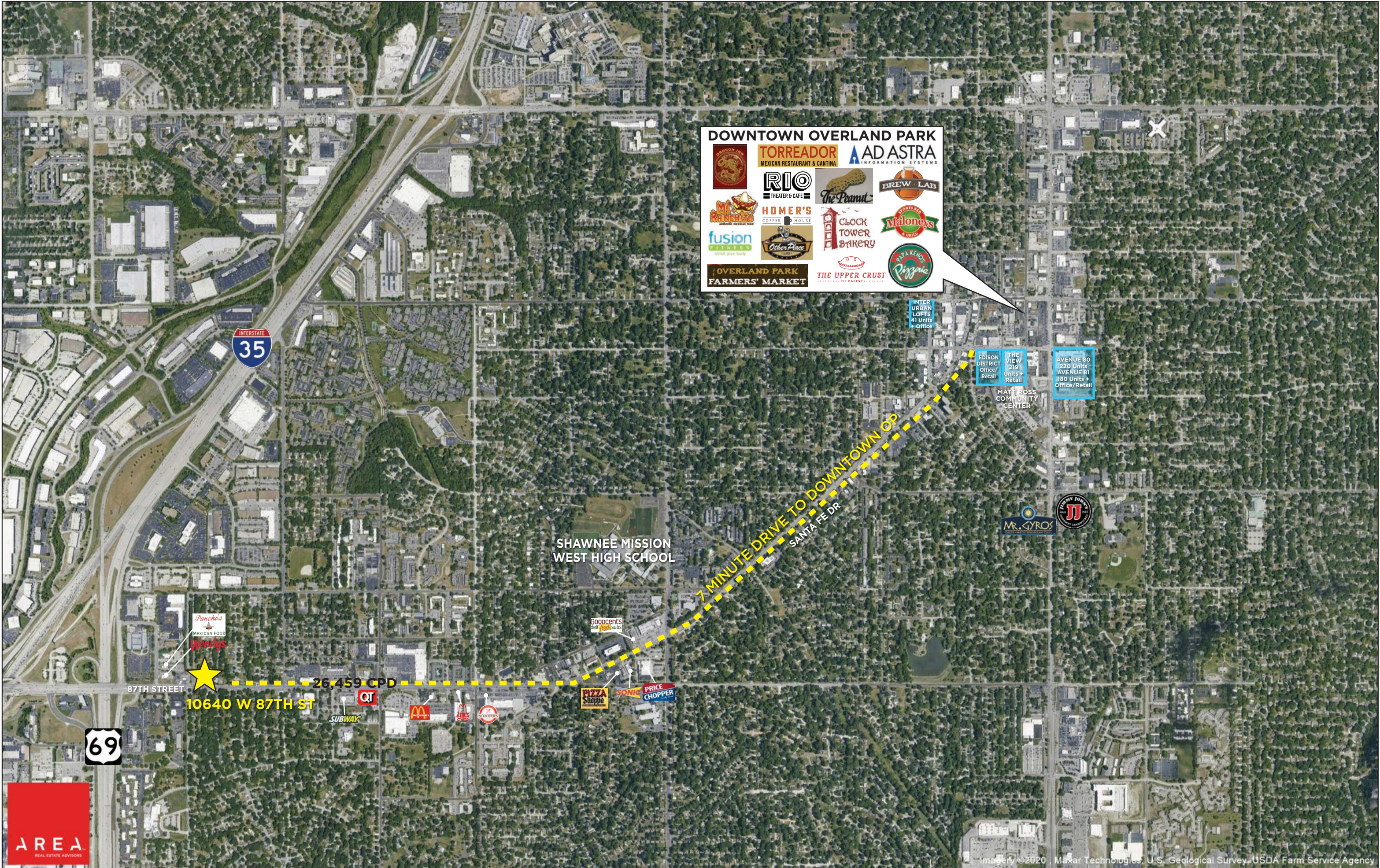
FOR MORE INFORMATION

HANK SIMPSON

D 816.777.2859

E HSIMPSON@OPENAREA.COM





FULL PROFILE

2000-2010 Census, 2019 Estimates with 2024 Projections

Calculated using Weighted Block Centroid from Block Groups



Lat/Lon: 38.9715/-94.7092

RF1

10640 W 87th St

Overland Park, KS 66214

1 mi radius 3 mi radius 5 mi radius

POPULATION	2019 Estimated Population	10,933	109,555	239,633
	2024 Projected Population	11,543	115,657	252,783
	2010 Census Population	10,419	104,237	226,712
	2000 Census Population	9,712	106,981	224,228
	Projected Annual Growth 2019 to 2024	1.1%	1.1%	1.1%
	Historical Annual Growth 2000 to 2019	0.7%	0.1%	0.4%
HOUSEHOLDS	2019 Estimated Households	4,845	49,469	108,596
	2024 Projected Households	5,139	52,420	114,892
	2010 Census Households	4,471	45,499	99,253
	2000 Census Households	4,275	45,608	94,508
	Projected Annual Growth 2019 to 2024	1.2%	1.2%	1.2%
	Historical Annual Growth 2000 to 2019	0.7%	0.4%	0.8%
AGE	2019 Est. Population Under 10 Years	13.1%	10.6%	10.5%
	2019 Est. Population 10 to 19 Years	11.6%	11.0%	11.2%
	2019 Est. Population 20 to 29 Years	19.7%	15.5%	14.6%
	2019 Est. Population 30 to 44 Years	22.3%	18.8%	18.8%
	2019 Est. Population 45 to 59 Years	15.3%	18.8%	19.3%
	2019 Est. Population 60 to 74 Years	12.1%	17.1%	17.3%
	2019 Est. Population 75 Years or Over	5.9%	8.2%	8.3%
	2019 Est. Median Age	33.1	40.2	40.6
MARITAL STATUS & GENDER	2019 Est. Male Population	47.4%	48.3%	48.2%
	2019 Est. Female Population	52.6%	51.7%	51.8%
	2019 Est. Never Married	40.3%	32.6%	30.8%
	2019 Est. Now Married	37.6%	45.6%	48.8%
	2019 Est. Separated or Divorced	18.8%	16.3%	15.0%
	2019 Est. Widowed	3.3%	5.5%	5.4%
INCOME	2019 Est. HH Income \$200,000 or More	1.7%	4.7%	7.4%
	2019 Est. HH Income \$150,000 to \$199,999	4.1%	7.3%	8.9%
	2019 Est. HH Income \$100,000 to \$149,999	12.8%	15.1%	16.4%
	2019 Est. HH Income \$75,000 to \$99,999	16.7%	17.1%	16.8%
	2019 Est. HH Income \$50,000 to \$74,999	24.9%	20.1%	18.6%
	2019 Est. HH Income \$35,000 to \$49,999	15.8%	13.7%	12.6%
	2019 Est. HH Income \$25,000 to \$34,999	9.8%	9.6%	7.9%
	2019 Est. HH Income \$15,000 to \$24,999	8.6%	6.4%	5.9%
	2019 Est. HH Income Under \$15,000	5.6%	6.0%	5.4%
	2019 Est. Average Household Income	\$66,284	\$79,794	\$93,742
	2019 Est. Median Household Income	\$59,238	\$70,528	\$78,343
	2019 Est. Per Capita Income	\$29,453	\$36,097	\$42,555
	2019 Est. Total Businesses	1,051	6,412	16,391
	2019 Est. Total Employees	15,154	79,948	233,011

This report was produced using data from private and government sources deemed to be reliable. The information herein is provided without representation or warranty.

FULL PROFILE

2000-2010 Census, 2019 Estimates with 2024 Projections

Calculated using Weighted Block Centroid from Block Groups



Lat/Lon: 38.9715/-94.7092

RF1

10640 W 87th St

Overland Park, KS 66214

1 mi radius 3 mi radius 5 mi radius

RACE	2019 Est. White	73.7%	80.4%	83.4%
	2019 Est. Black	10.5%	6.8%	5.6%
	2019 Est. Asian or Pacific Islander	4.7%	4.6%	4.9%
	2019 Est. American Indian or Alaska Native	0.6%	0.4%	0.4%
	2019 Est. Other Races	10.6%	7.8%	5.8%
HISPANIC	2019 Est. Hispanic Population	1,590	12,441	20,023
	2019 Est. Hispanic Population	14.5%	11.4%	8.4%
	2024 Proj. Hispanic Population	14.8%	11.6%	8.5%
	2010 Hispanic Population	14.2%	10.8%	7.9%
EDUCATION (Adults 25 or Older)	2019 Est. Adult Population (25 Years or Over)	7,348	77,934	171,509
	2019 Est. Elementary (Grade Level 0 to 8)	5.1%	3.0%	2.1%
	2019 Est. Some High School (Grade Level 9 to 11)	3.9%	3.2%	2.5%
	2019 Est. High School Graduate	20.0%	17.0%	15.1%
	2019 Est. Some College	24.9%	21.2%	19.4%
	2019 Est. Associate Degree Only	10.1%	8.9%	8.2%
	2019 Est. Bachelor Degree Only	23.1%	29.5%	32.4%
	2019 Est. Graduate Degree	12.9%	17.3%	20.2%
HOUSING	2019 Est. Total Housing Units	4,945	50,459	110,833
	2019 Est. Owner-Occupied	34.8%	56.4%	59.7%
	2019 Est. Renter-Occupied	63.1%	41.7%	38.3%
	2019 Est. Vacant Housing	2.0%	2.0%	2.0%
HOMES BUILT BY YEAR	2019 Homes Built 2010 or later	4.7%	4.1%	4.9%
	2019 Homes Built 2000 to 2009	4.2%	3.3%	5.4%
	2019 Homes Built 1990 to 1999	10.5%	10.4%	13.4%
	2019 Homes Built 1980 to 1989	16.5%	18.3%	19.8%
	2019 Homes Built 1970 to 1979	16.9%	24.4%	17.5%
	2019 Homes Built 1960 to 1969	29.8%	20.4%	16.7%
	2019 Homes Built 1950 to 1959	10.4%	12.2%	14.4%
	2019 Homes Built Before 1949	4.8%	4.9%	6.0%
HOME VALUES	2019 Home Value \$1,000,000 or More	1.1%	0.4%	0.6%
	2019 Home Value \$500,000 to \$999,999	5.1%	4.4%	6.3%
	2019 Home Value \$400,000 to \$499,999	3.8%	4.0%	6.9%
	2019 Home Value \$300,000 to \$399,999	5.6%	11.0%	15.6%
	2019 Home Value \$200,000 to \$299,999	24.0%	37.8%	37.8%
	2019 Home Value \$150,000 to \$199,999	43.1%	27.4%	21.7%
	2019 Home Value \$100,000 to \$149,999	17.3%	14.0%	11.5%
	2019 Home Value \$50,000 to \$99,999	3.0%	3.5%	2.7%
	2019 Home Value \$25,000 to \$49,999	0.2%	0.5%	0.5%
	2019 Home Value Under \$25,000	2.0%	1.5%	1.4%
	2019 Median Home Value	\$179,947	\$208,433	\$239,738
	2019 Median Rent	\$872	\$842	\$865

This report was produced using data from private and government sources deemed to be reliable. The information herein is provided without representation or warranty.

FULL PROFILE

2000-2010 Census, 2019 Estimates with 2024 Projections

Calculated using Weighted Block Centroid from Block Groups



Lat/Lon: 38.9715/-94.7092

RF1

10640 W 87th St

Overland Park, KS 66214

1 mi radius 3 mi radius 5 mi radius

LABOR FORCE	2019 Est. Labor Population Age 16 Years or Over	8,735	90,801	198,348
	2019 Est. Civilian Employed	72.5%	69.0%	69.0%
	2019 Est. Civilian Unemployed	3.7%	2.4%	2.2%
	2019 Est. in Armed Forces	0.4%	-	-
	2019 Est. not in Labor Force	23.4%	28.5%	28.8%
	2019 Labor Force Males	46.7%	47.7%	47.6%
	2019 Labor Force Females	53.3%	52.3%	52.4%
OCCUPATION	2019 Occupation: Population Age 16 Years or Over	6,336	62,661	136,827
	2019 Mgmt, Business, & Financial Operations	19.9%	20.1%	21.2%
	2019 Professional, Related	29.2%	29.1%	30.5%
	2019 Service	14.9%	14.6%	13.3%
	2019 Sales, Office	22.1%	22.5%	22.6%
	2019 Farming, Fishing, Forestry	-	-	-
	2019 Construction, Extraction, Maintenance	6.1%	5.1%	4.6%
	2019 Production, Transport, Material Moving	7.7%	8.5%	7.7%
	2019 White Collar Workers	71.3%	71.7%	74.3%
	2019 Blue Collar Workers	28.7%	28.3%	25.7%
TRANSPORTATION TO WORK	2019 Drive to Work Alone	84.3%	85.1%	84.9%
	2019 Drive to Work in Carpool	9.1%	7.2%	6.8%
	2019 Travel to Work by Public Transportation	0.3%	0.4%	0.4%
	2019 Drive to Work on Motorcycle	0.2%	0.1%	0.1%
	2019 Walk or Bicycle to Work	0.8%	1.2%	1.1%
	2019 Other Means	0.8%	0.7%	0.7%
	2019 Work at Home	4.5%	5.3%	6.0%
TRAVEL TIME	2019 Travel to Work in 14 Minutes or Less	28.6%	33.9%	32.5%
	2019 Travel to Work in 15 to 29 Minutes	56.3%	51.3%	51.9%
	2019 Travel to Work in 30 to 59 Minutes	18.8%	17.4%	17.9%
	2019 Travel to Work in 60 Minutes or More	2.9%	2.2%	2.1%
	2019 Average Travel Time to Work	18.5	17.9	18.2
CONSUMER EXPENDITURE	2019 Est. Total Household Expenditure	\$256.39 M	\$2.95 B	\$7.26 B
	2019 Est. Apparel	\$8.93 M	\$103.38 M	\$255.87 M
	2019 Est. Contributions, Gifts	\$13.84 M	\$166.8 M	\$421.05 M
	2019 Est. Education, Reading	\$7.35 M	\$91.34 M	\$235.08 M
	2019 Est. Entertainment	\$14.11 M	\$166.27 M	\$412.8 M
	2019 Est. Food, Beverages, Tobacco	\$39.99 M	\$453.88 M	\$1.11 B
	2019 Est. Furnishings, Equipment	\$8.8 M	\$103.54 M	\$256.62 M
	2019 Est. Health Care, Insurance	\$23.65 M	\$272.6 M	\$664.61 M
	2019 Est. Household Operations, Shelter, Utilities	\$84.3 M	\$958.11 M	\$2.35 B
	2019 Est. Miscellaneous Expenses	\$4.8 M	\$55.86 M	\$137.82 M
	2019 Est. Personal Care	\$3.43 M	\$39.68 M	\$97.54 M
	2019 Est. Transportation	\$47.19 M	\$540.53 M	\$1.32 B

This report was produced using data from private and government sources deemed to be reliable. The information herein is provided without representation or warranty.