

**9,982 SF  
FOR SALE**

**RECENTLY RENOVATED**



# INDUSTRIAL WAREHOUSE

**1700 W Parkes Dr  
Broadview, IL 60155**

## PROPERTY HIGHLIGHTS

**9,982 SF**

BUILDING SIZE

**18'**

CEILING HEIGHT

**1976**

YEAR BUILT

**4,500 SF**

SECURED OUTSIDE STORAGE

**3,433 SF**

OFFICE SIZE

**1**

DRIVE-IN DOOR

**2022**

RENOVATED

**Wet**

SPRINKLERS

**1**

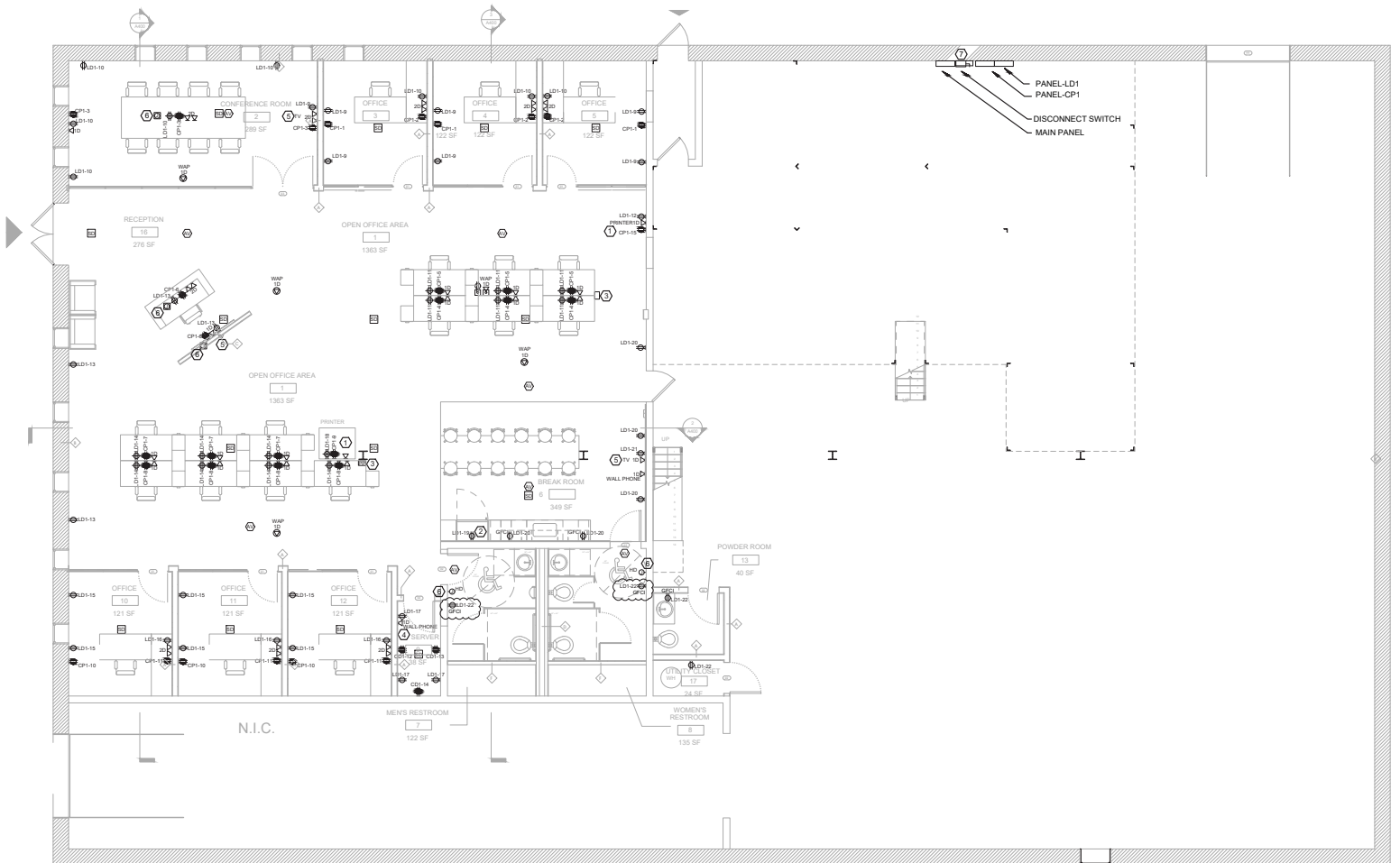
INTERIOR DOCK

**18**

PARKING STALLS

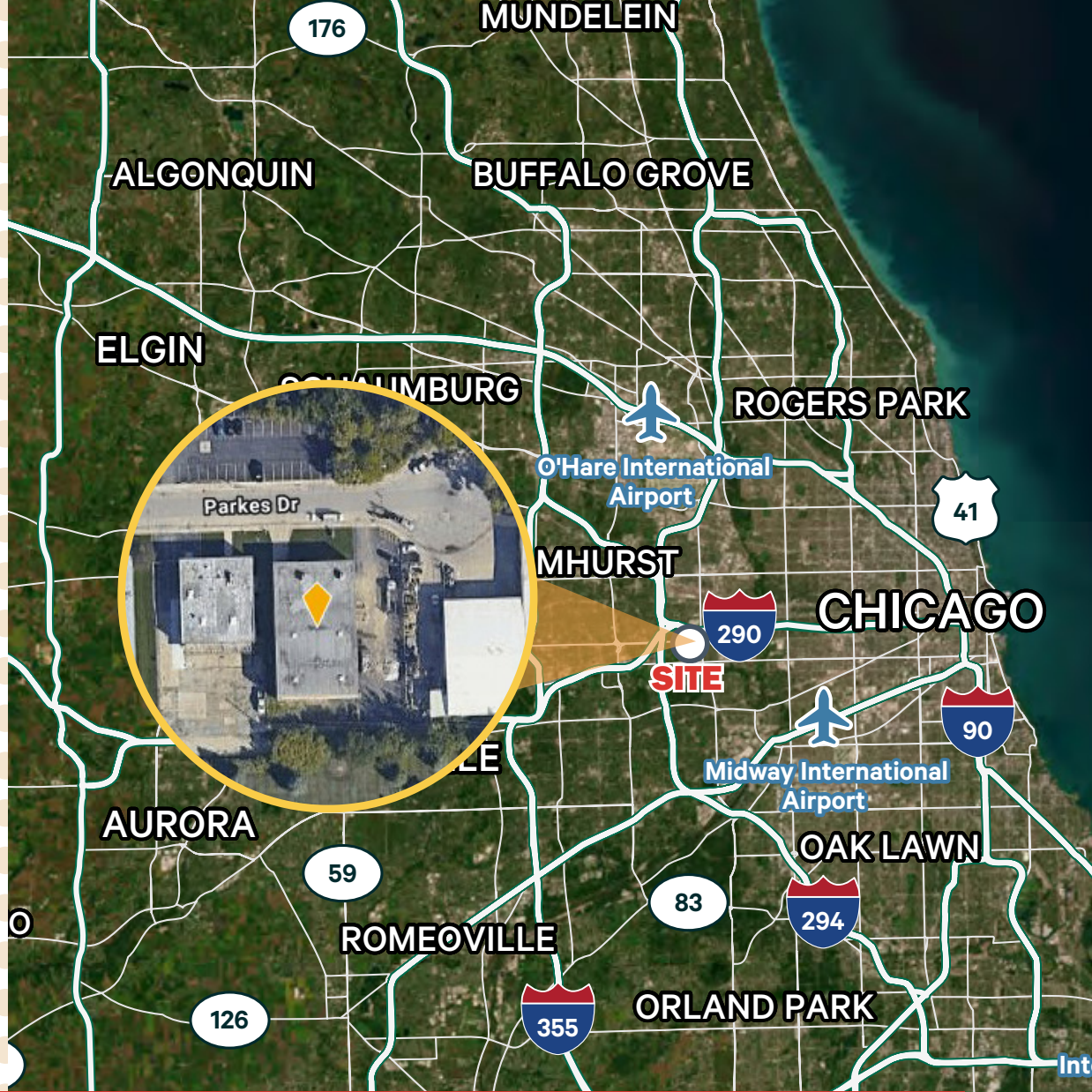
**CBRE**

# FLOOR PLAN



# INDUSTRIAL WAREHOUSE

1700 W. PARKES DR  
BROADVIEW, IL 60155



## CONTACTS

**Jimmy Kowalczyk**

First Vice President

+1 630 368 5548

[jimmy.kowalczyk@cbre.com](mailto:jimmy.kowalczyk@cbre.com)

© 2026 CBRE, Inc. All rights reserved. This information has been obtained from sources believed reliable but has not been verified for accuracy or completeness. CBRE, Inc. makes no guarantee, representation or warranty and accepts no responsibility or liability as to the accuracy, completeness, or reliability of the information contained herein. You should conduct a careful, independent investigation of the property and verify all information. Any reliance on this information is solely at your own risk. CBRE and the CBRE logo are service marks of CBRE, Inc. All other marks displayed on this document are the property of their respective owners, and the use of such marks does not imply any affiliation with or endorsement of CBRE. Photos herein are the property of their respective owners. Use of these images without the express written consent of the owner is prohibited.

**CBRE**