

## TO LET: Suite 3/2, Third Floor 488.5 sq m (4,828 sq ft)

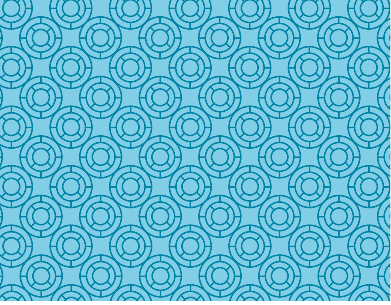


### Description

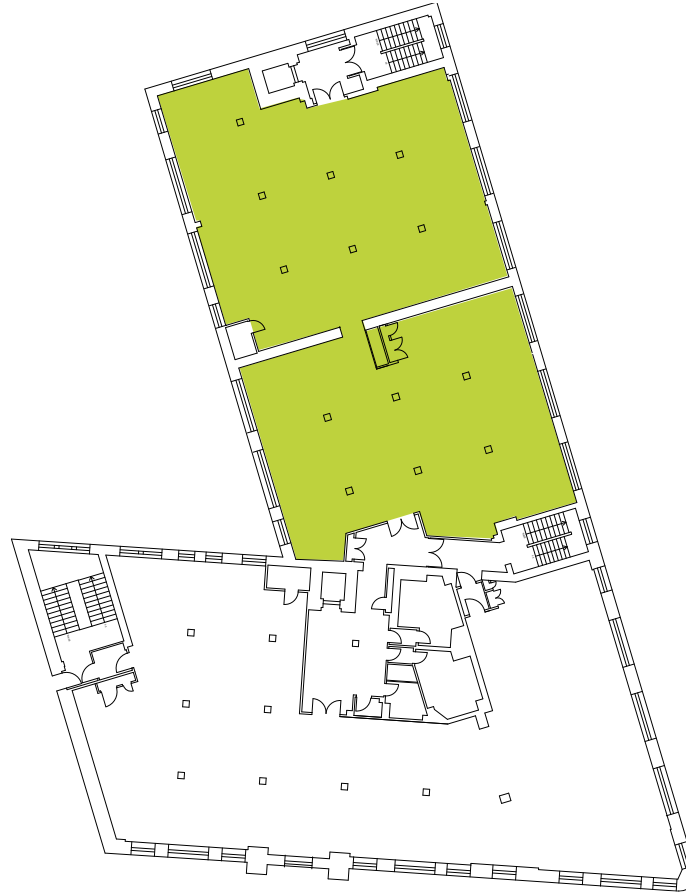
Great Michael House and Links House comprise two adjoining period buildings which have been extensively refurbished to provide high quality contemporary open plan offices. Constructed over 5 storeys, the buildings command a superb location overlooking Leith Links.

This suite is located on the Third Floor of Links House and provides large, open plan accommodation with natural light on 3 sides.





## Third Floor - Suite 3/2



### Specification

- Fully refurbished contemporary common areas
- Individual open plan suites
- Secure dedicated reception area
- Fully accessed raised floor
- Suspended ceilings with VDU compliant lighting
- Passenger lift to all floors
- Tea preparation area on each floor
- Upgraded toilet facilities on each floor
- DDA compliant facilities
- On site parking/unlimited on street parking
- Shower facilities and bicycle racks available
- A new Galway Gourmet Café and communal meeting room situated in Great Michael House is available to all Links Place occupiers
- Links House EPC rating 'D+'

### Letting terms

Full details of rent and letting terms are available upon application to the joint letting agents.

### Viewing and further information

For further information and to arrange a viewing, please Contact the joint letting agents.



Lewis Pentland

GVA James Barr  
Quayside House, 127 Fountainbridge  
Edinburgh EH3 9QG

lewis.pentland@gvajb.co.uk



Mike Irvine  
Stuart Dobrijevic

Montagu Evans  
Exchange Tower, 19 Canning St  
Edinburgh EH3 8EG

mike.irvine@montagu-evans.co.uk  
stuart.dobrijevic@montagu-evans.co.uk

Sat Nav coordinates - Lat 55:58:23N Lon 3:09:52W

[www.links-place.co.uk](http://www.links-place.co.uk)

