

# AVAILABLE FOR LEASE

Madera Surgery Center



For Additional Information  
Please Contact:

**Scott Christensen**  
Newmark Grubb Pearson Commercial  
559.447.6230  
schristensen@pearsonrealty.com  
CA BRE #01415793

**Chris DaSilva**  
Century 21 M&M and Associates  
559.232.0096  
cdasilva@c21mm.com  
CA BRE #01926322

**1015 West Yosemite Avenue - Madera, California**

**Newmark Grubb  
Pearson Commercial**

FRESNO OFFICE: 7480 N Palm Ave Suite 101 Fresno CA 93711, T 559.432.6200  
VISALIA OFFICE: 3447 S Demaree St Visalia CA 93277, T 559.732.7300

[www.ngpearson.com](http://www.ngpearson.com)  
Independently Owned and Operated

Procuring broker shall only be entitled to a commission, calculated in accordance with the rates approved by our principal only if such procuring broker executes a brokerage agreement acceptable to us and our principal and the conditions as set forth in the brokerage agreement are fully and unconditionally satisfied. Although all information furnished regarding property for sale, rental, or financing is from sources deemed reliable, such information has not been verified and no express representation is made nor is any to be implied as to the accuracy thereof and it is submitted subject to errors, omissions, change of price, rental or other conditions, prior sale, lease or financing, or withdrawal without notice and to any special conditions imposed by our principal.

# AVAILABLE FOR LEASE

1015 West Yosemite Avenue - Madera, CA



## PROPERTY DESCRIPTION

The building is currently a licensed Medical Surgery Center. It consists of two surgery rooms with recovery rooms, full-sized restrooms with showers, business office, and waiting room.

## PROPERTY INFORMATION

Available Space:	3,396± SF
Lease Rate:	\$2.35 per SF
Term:	Negotiable
Lot Size:	0.52± acres
Zoning:	Medical/Dental
Parking:	4:1,000; common

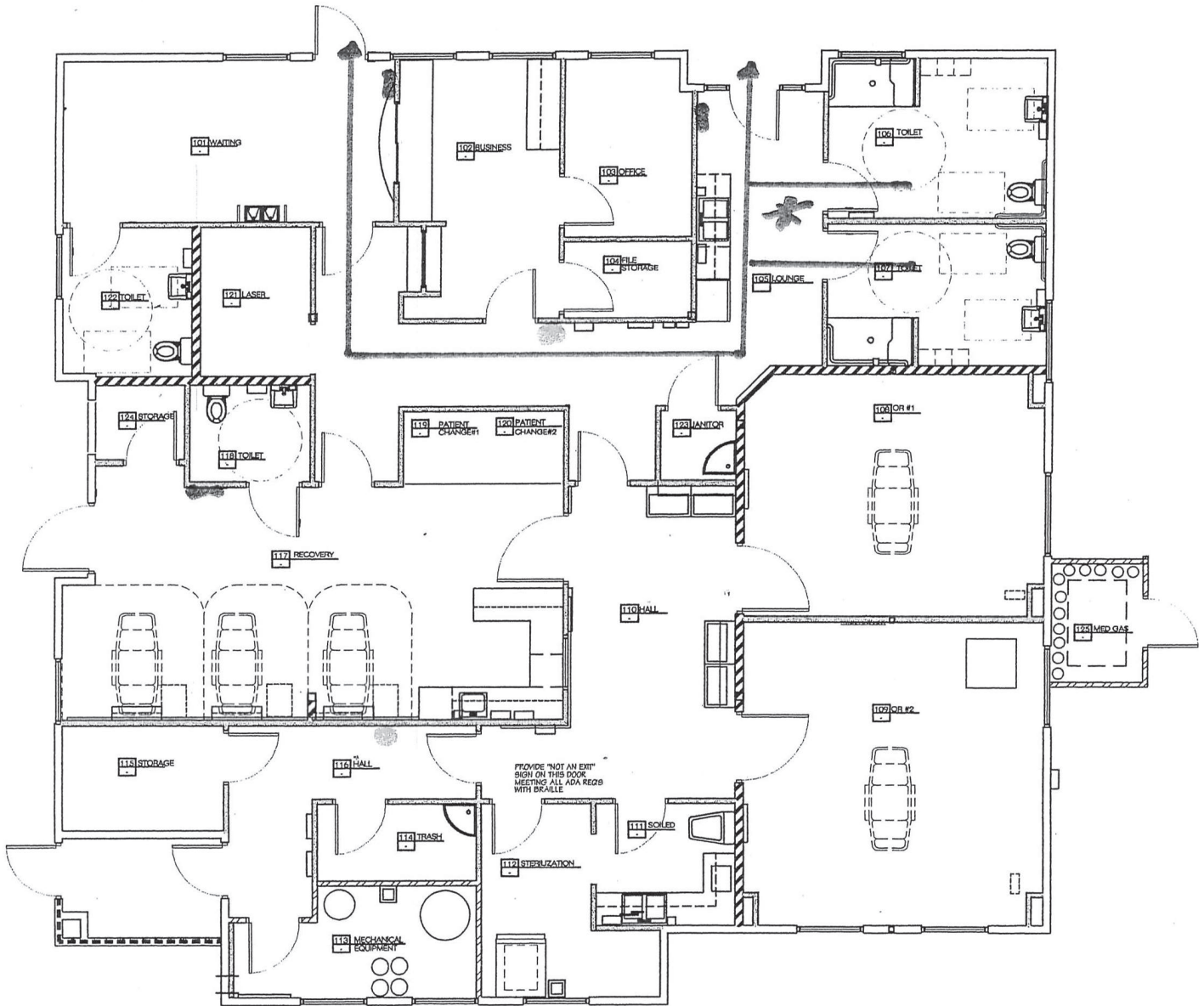


# AVAILABLE FOR LEASE

Madera Surgery Center



FLOOR PLAN | 3,396± SF



**Newmark Grubb**  
Pearson Commercial

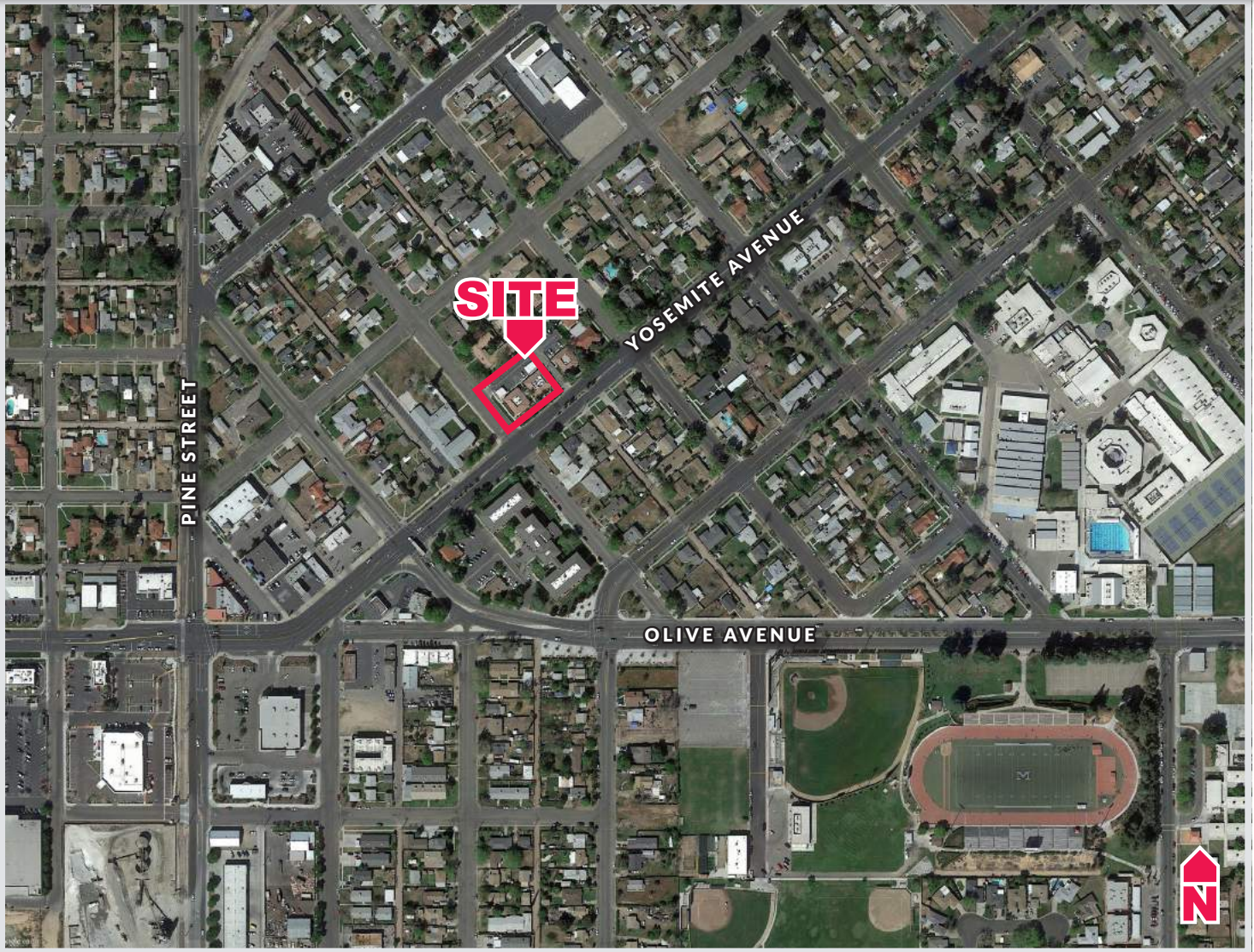
FRESNO OFFICE: 7480 N Palm Ave Suite 101 Fresno CA 93711, T 559.432.6200  
VISALIA OFFICE: 3447 S Demaree St Visalia CA 93277, T 559.732.7300

[www.ngpearson.com](http://www.ngpearson.com)  
Independently Owned and Operated

Procuring broker shall only be entitled to a commission, calculated in accordance with the rates approved by our principal only if such procuring broker executes a brokerage agreement acceptable to us and our principal and the conditions as set forth in the brokerage agreement are fully and unconditionally satisfied. Although all information furnished regarding property for sale, rental, or financing is from sources deemed reliable, such information has not been verified and no express representation is made nor is any to be implied as to the accuracy thereof and it is submitted subject to errors, omissions, change of price, rental or other conditions, prior sale, lease or financing, or withdrawal without notice and to any special conditions imposed by our principal.

# AVAILABLE FOR LEASE

1015 West Yosemite Avenue - Madera, CA



For Additional Information  
Please Contact:

**Scott Christensen**  
Newmark Grubb Pearson Commercial  
559.447.6230  
schristensen@pearsonrealty.com  
CA BRE #01415793

**Chris DaSilva**  
Century 21 M&M and Associates  
559.232.0096  
cdasilva@c21mm.com  
CA BRE #01926322

**Newmark Grubb**  
Pearson Commercial

FRESNO OFFICE: 7480 N Palm Ave Suite 101 Fresno CA 93711, T 559.432.6200  
VISALIA OFFICE: 3447 S Demaree St Visalia CA 93277, T 559.732.7300

[www.ngpearson.com](http://www.ngpearson.com)  
Independently Owned and Operated

Procuring broker shall only be entitled to a commission, calculated in accordance with the rates approved by our principal only if such procuring broker executes a brokerage agreement acceptable to us and our principal and the conditions as set forth in the brokerage agreement are fully and unconditionally satisfied. Although all information furnished regarding property for sale, rental, or financing is from sources deemed reliable, such information has not been verified and no express representation is made nor is any to be implied as to the accuracy thereof and it is submitted subject to errors, omissions, change of price, rental or other conditions, prior sale, lease or financing, or withdrawal without notice and to any special conditions imposed by our principal.