



# FOR LEASE



960 WEST 800 NORTH OREM, UTAH

## NORTHGATE RETAIL/ OFFICE

### RETAIL INFORMATION

- 1 Space Available  
725 SF Retail
- Lease Rate: \$18.00/SF,  
NNN

### PROPERTY HIGHLIGHTS

- Quick Access to I-15
- Ample Parking
- Excellent 800 North  
Visibility

### OFFICE INFORMATION

- 2 Spaces Available  
Second Floor  
1,668 SF  
1,813 SF
- Ready for Build Out
- Lease Rate: \$13.50/SF,  
NNN

### [VIDEO TOURS ON FLOORPLANS](#)

**Spencer Croshaw**  
801.702.4689  
[spencer.croshaw@cbcadvisors.com](mailto:spencer.croshaw@cbcadvisors.com)

[www.cbcadvisors.com](http://www.cbcadvisors.com)



RETAIL

**CBC ADVISORS**  
825 EAST 1180 SOUTH, SUITE 300  
AMERICAN FORK, UTAH  
(P) 801.610.1300



**COLDWELL  
BANKER  
COMMERCIAL**

ADVISORS

**FOR LEASE**



**SECOND LEVEL**



**MAIN LEVEL**



**Spencer Croshaw**  
801.702.4689  
spencer.croshaw@cbcadvisors.com

[www.cbcadvisors.com](http://www.cbcadvisors.com)



**RETAIL**

**CBC ADVISORS**  
825 EAST 1180 SOUTH, SUITE 300  
AMERICAN FORK, UTAH  
(P) 801.610.1300

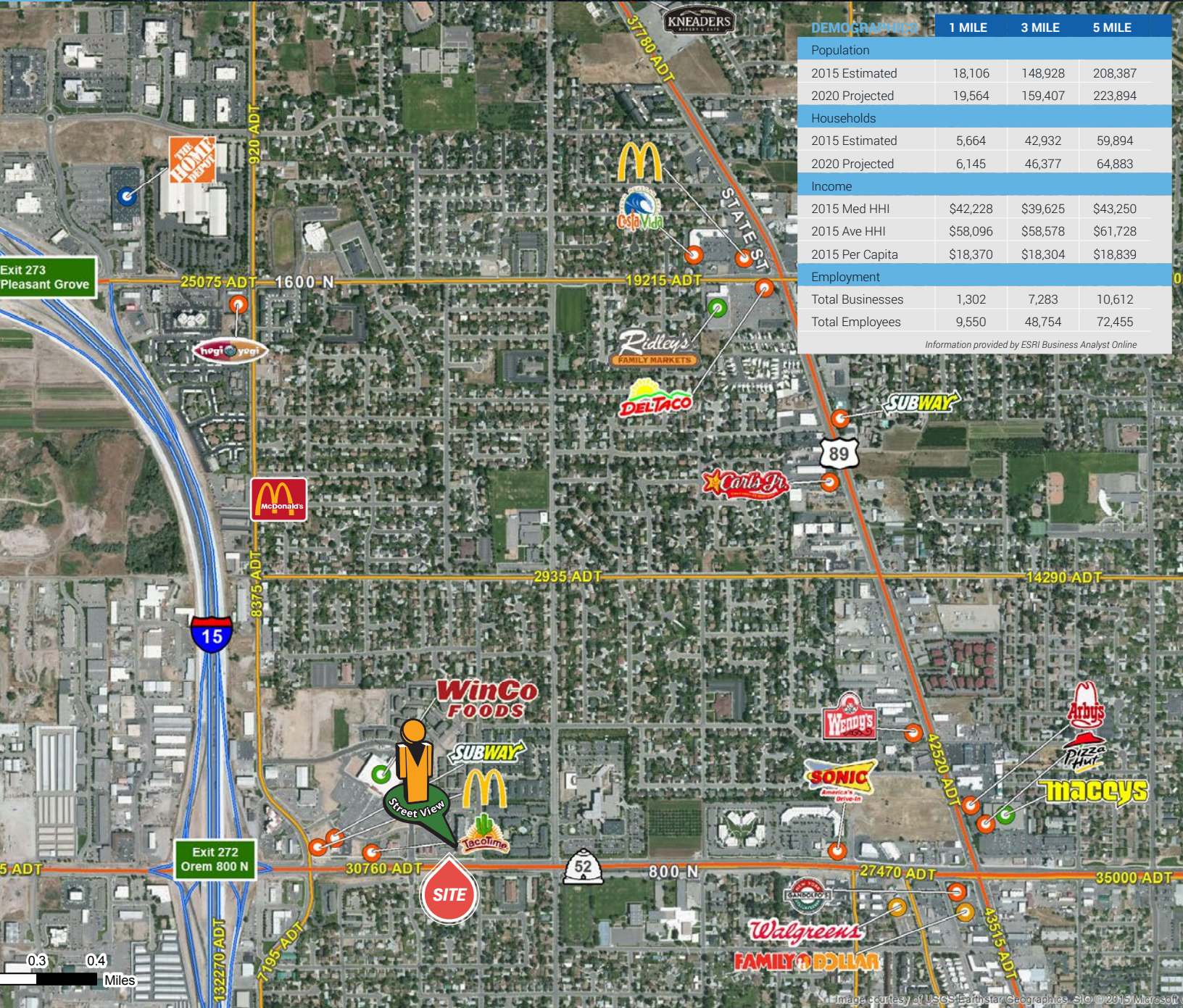


**Spencer Croshaw**  
 801.702.4689  
 spencer.croshaw@cbcadvisors.com

www.cbcadvisors.com



**CBC ADVISORS**  
 825 EAST 1180 SOUTH, SUITE 300  
 AMERICAN FORK, UTAH  
 (P) 801.610.1300



DEMOGRAPHICS	1 MILE	3 MILE	5 MILE
<b>Population</b>			
2015 Estimated	18,106	148,928	208,387
2020 Projected	19,564	159,407	223,894
<b>Households</b>			
2015 Estimated	5,664	42,932	59,894
2020 Projected	6,145	46,377	64,883
<b>Income</b>			
2015 Med HHI	\$42,228	\$39,625	\$43,250
2015 Ave HHI	\$58,096	\$58,578	\$61,728
2015 Per Capita	\$18,370	\$18,304	\$18,839
<b>Employment</b>			
Total Businesses	1,302	7,283	10,612
Total Employees	9,550	48,754	72,455

Information provided by ESRI Business Analyst Online

**Spencer Croshaw**  
 801.702.4689  
 spencer.croshaw@cbcadvisors.com

[www.cbcadvisors.com](http://www.cbcadvisors.com)



**CBC ADVISORS**  
 825 EAST 1180 SOUTH, SUITE 300  
 AMERICAN FORK, UTAH  
 (P) 801.610.1300