

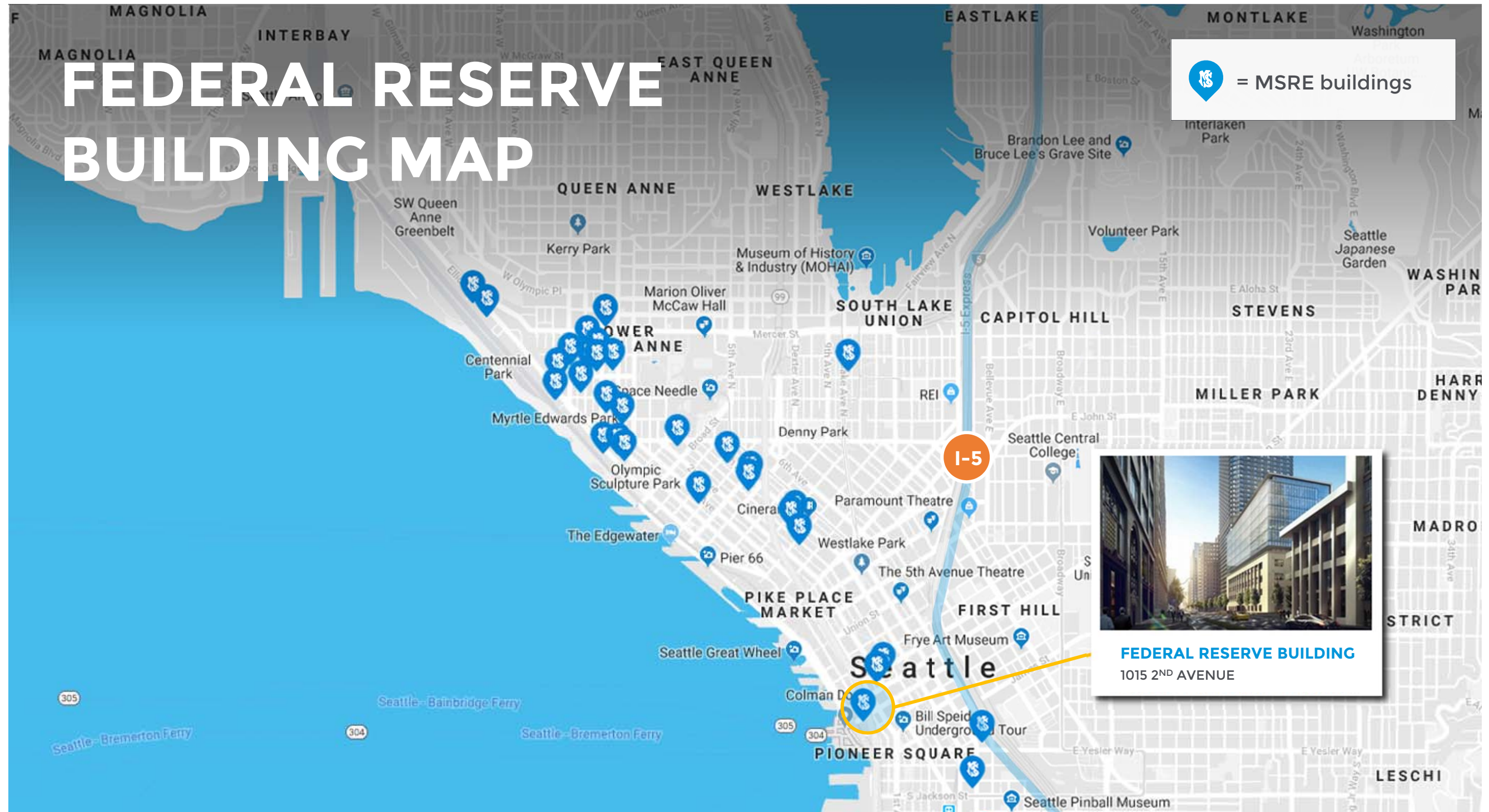


FEDERAL RESERVE BUILDING



FEDERAL RESERVE BUILDING MAP

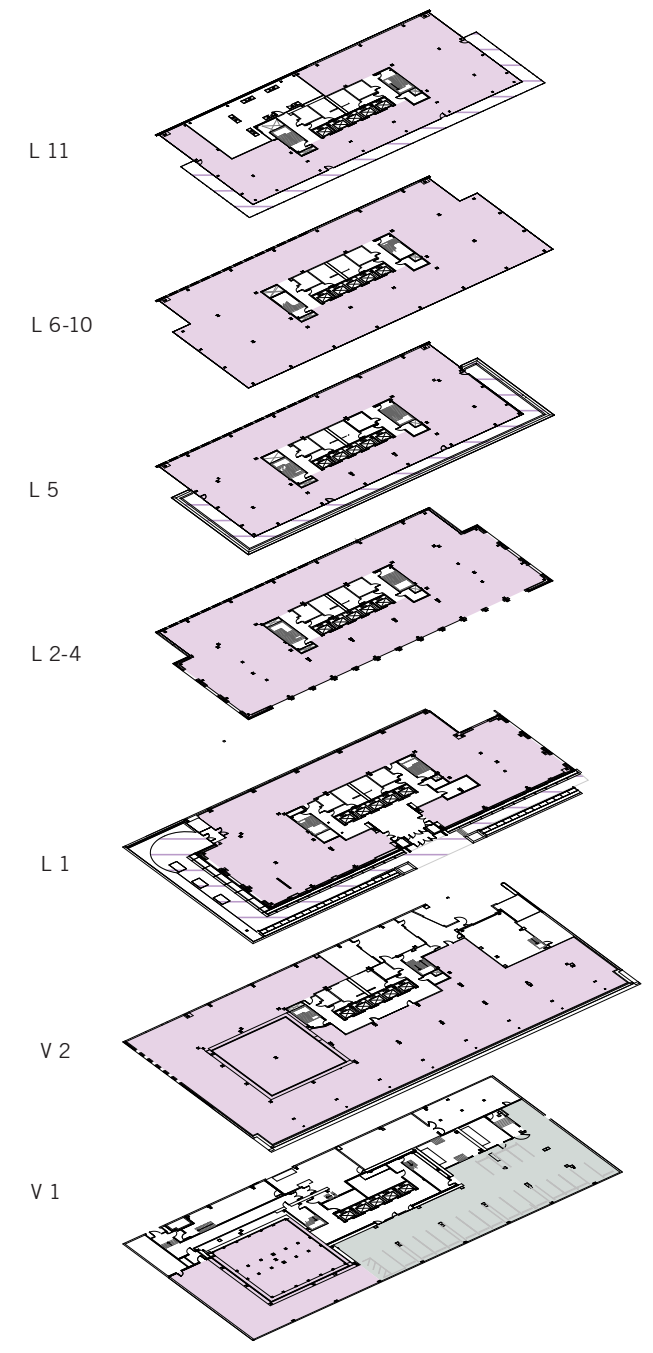
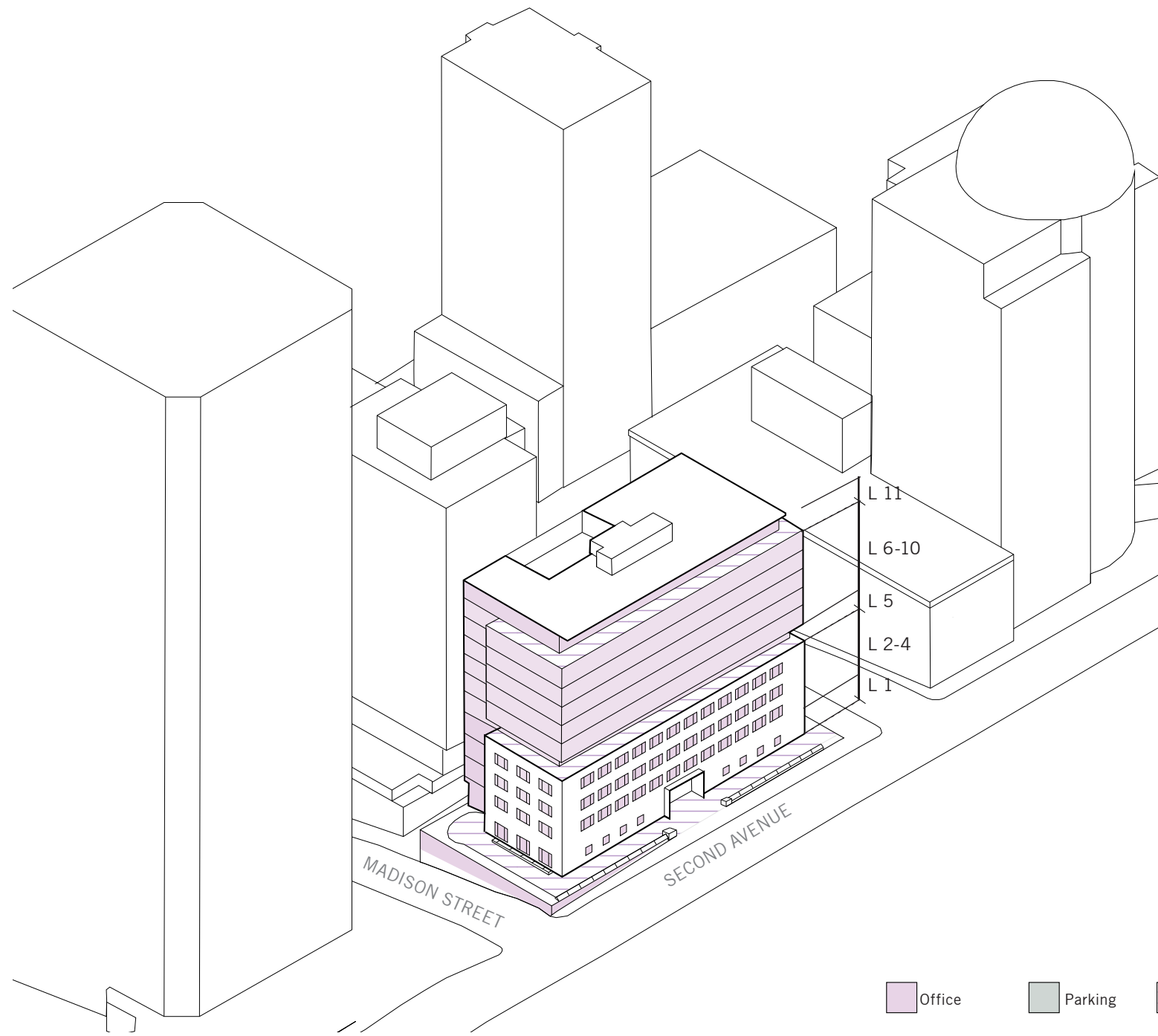
 = MSRE buildings



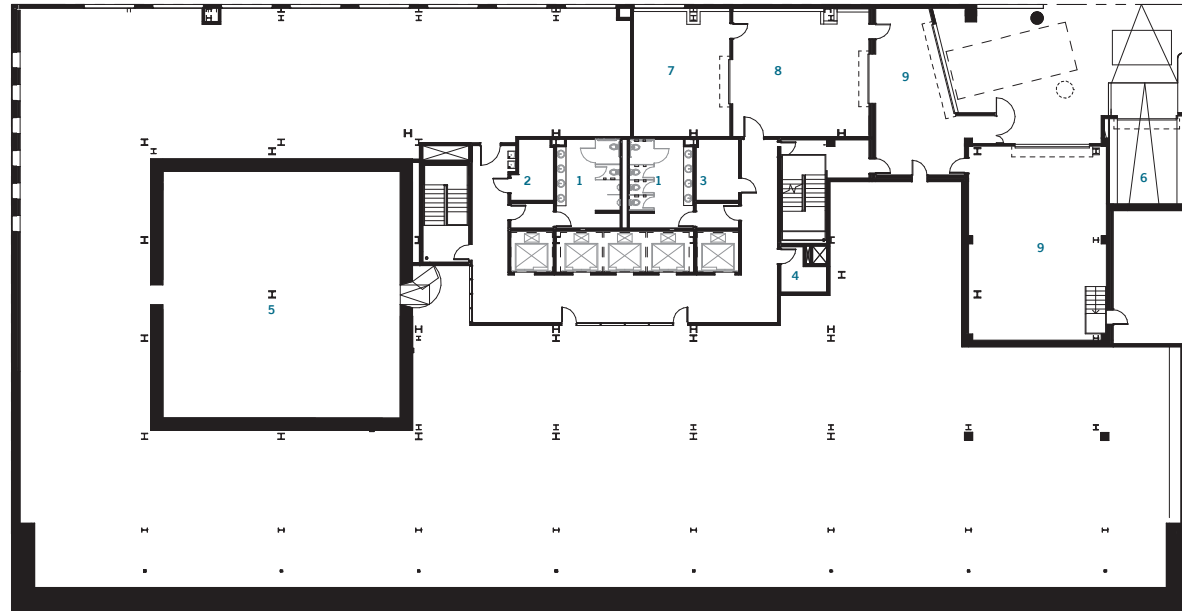
FEDERAL RESERVE BUILDING

HISTORIC PRESERVATION MEETS OPTIMAL WORKSPACE IN SEATTLE'S CENTRAL BUSINESS DISTRICT

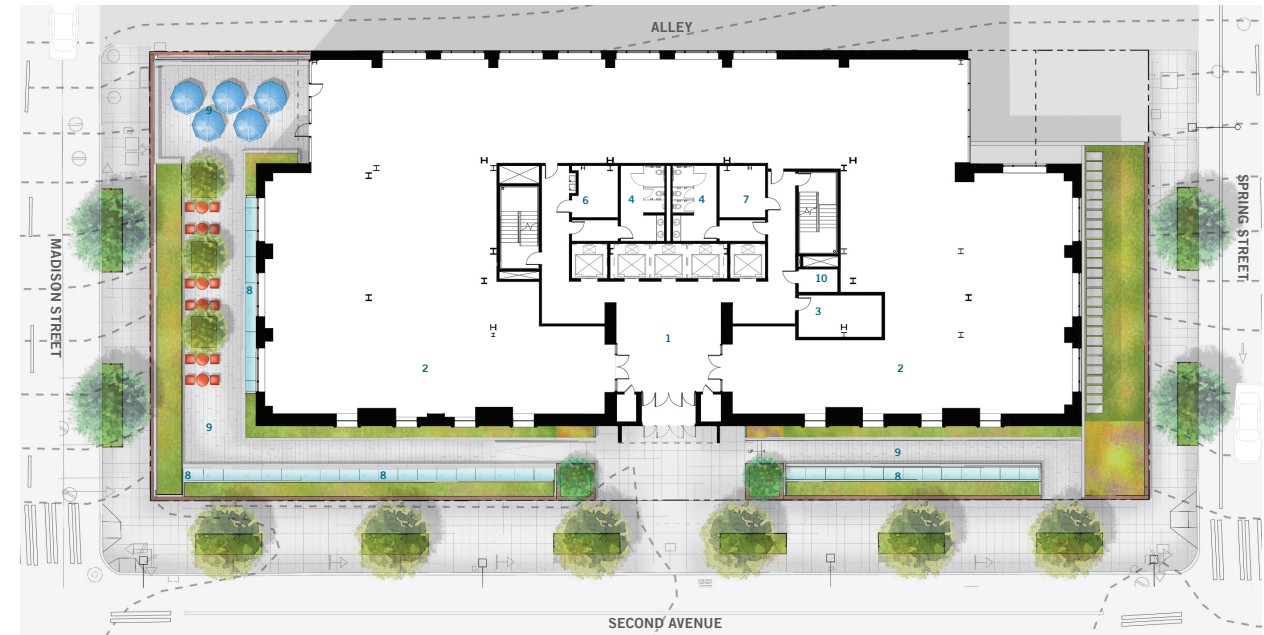
- Fall 2018 start with completion in Winter 2020
- Close proximity to waterfront, 3rd Avenue bus lines and Coleman Ferry Terminal
- 200,000 square feet of office space on floors 2 through 11
- 11 floors, 7 of which are added to the original 4 story building, plus 2 below-grade levels
- Rooftop deck, exterior sculptures and outdoor terrace on 4th floor
- Skylights on street level allow daylight into below-grade space
- Listed on the National Register of Historic Spaces
 - Preservation of historical features include 3 bank vault doors, 1940's marble lobby interior and original ground-level exterior features.



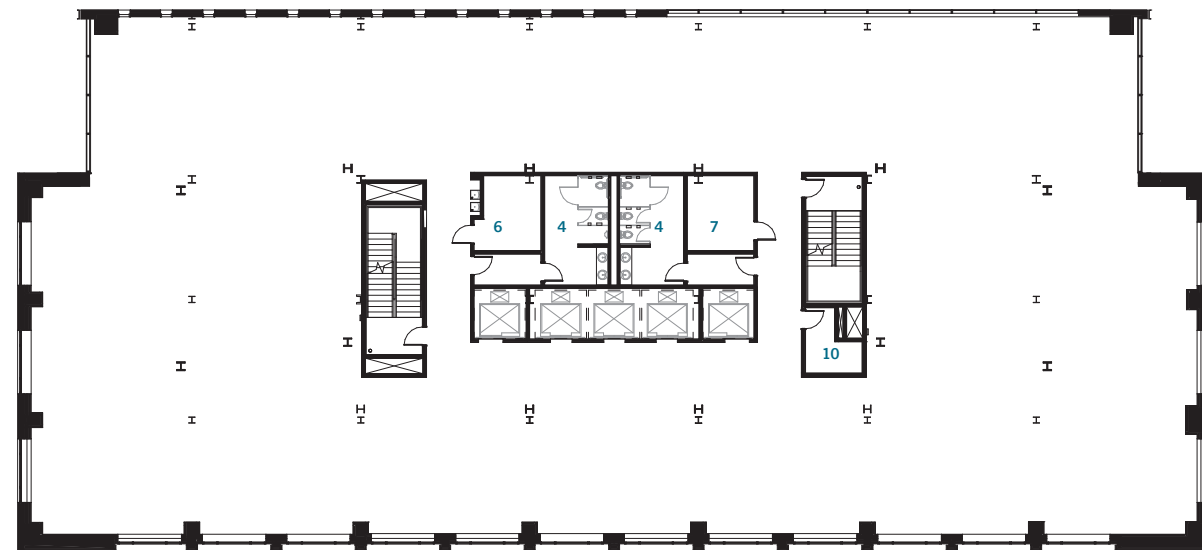
VAULT LEVEL 1



LEVEL 1



LEVELS 2 - 4: 16,690 SF



LEVELS 6 - 10: 17,170 SF

