



555 East Lookerman St.
Dover, Delaware 19901

McGinnis Commercial Real Estate

Phone: 302.736.2710 Fax: 302.736.2715

www.mcginnisrealty.com

BLEVINS COMMERCIAL Property
139 MAIN STREET, SMYRNA, KENT COUNTY, DELAWARE 19977

OFFICE FILE# 217273 MLS# N/A

FOR SALE

CONTRACTOR, WAREHOUSE PROPERTY WITH INCOME PROPERTY



SALE PRICE \$ 219,000

**3,200 + SQUARE FOOT COMMERCIAL BUILDING AND
2 STORY HOUSE (FULLY LEASED) ATTACHED
LARGE YARD FOR EXPANSION OR STORAGE
CONVENIENT DOWNTOWN LOCATION
GRANT FUNDING MAY BE AVAILABLE FOR RENOVATIONS
ZONED R3 * DEVELOPMENT POTENTIAL**

**ALL INFORMATION SUBMITTED SUBJECT TO ERRORS AND MODIFICATIONS. ALL INFORMATION
CONTAINED HEREIN OBTAINED FROM RELIABLE SOURCES BUT NOT GUARANTEED. PROSPECTIVE
PURCHASERS SHOULD VERIFY ALL INFORMATION SUBMITTED. LISTING BROKERAGE REPRESENTS SELLER.
PAGE 1 OF 3 PAGES**



VIEW OF COMMERCIAL BUILDING

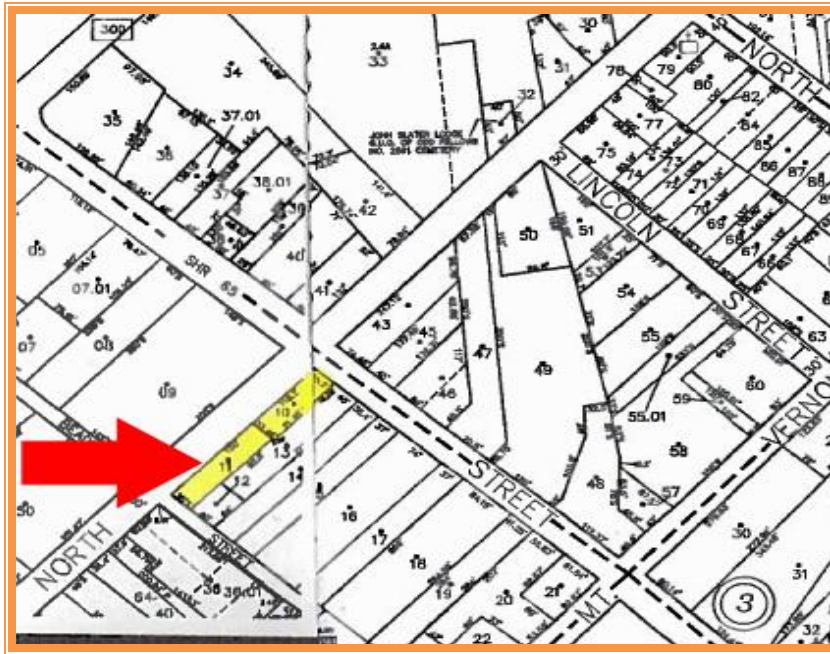


VIEW OF ATTACHED YARD



SIDE VIEW LOOKING SOUTH

ALL INFORMATION SUBMITTED SUBJECT TO ERRORS AND MODIFICATIONS. ALL INFORMATION CONTAINED HEREIN OBTAINED FROM RELIABLE SOURCES BUT NOT GUARANTEED. PROSPECTIVE PURCHASERS SHOULD VERIFY ALL INFORMATION SUBMITTED. LISTING BROKERAGE REPRESENTS SELLER. PAGE 2 OF 3 PAGES



Tax Map Identification 1-17-01013-01-1000

Deed Reference D7605 34, A36 110, E34 219

Zoning R3, Legal Non-Conforming
Town of Smyrna

Land Area 9,650 square feet

Frontage 36.50 ft +/-

Depth 268.00 ft +/-

Bldg Area (sq ft) Commercial 3,213 +/-

Residential 700 +/-

Rental Income from Apartment \$500 per month

FOR ADDITIONAL INFORMATION CONTACT:

**CHUCK SPIEGELMAN, ASSOCIATE BROKER
MCGINNIS COMMERCIAL REAL ESTATE**

OFFICE: 302-736-2710

FAX: 302-736-2715

MOBILE: 302-632-0859

EMAIL: cs@mcginnisrealty.com

**ALL INFORMATION SUBMITTED SUBJECT TO ERRORS AND MODIFICATIONS. ALL INFORMATION CONTAINED HEREIN OBTAINED FROM RELIABLE SOURCES BUT NOT GUARANTEED. PROSPECTIVE PURCHASERS SHOULD VERIFY ALL INFORMATION SUBMITTED. LISTING BROKERAGE REPRESENTS SELLER.
PAGE 3 OF 3 PAGES**