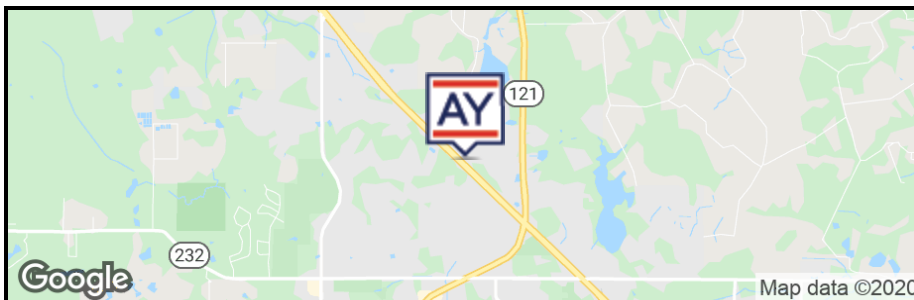




AVISON  
YOUNG

**FOR LEASE**



5,900 sf Available  
Negotiable (MG)  
Industrial

### HIGHLIGHTS

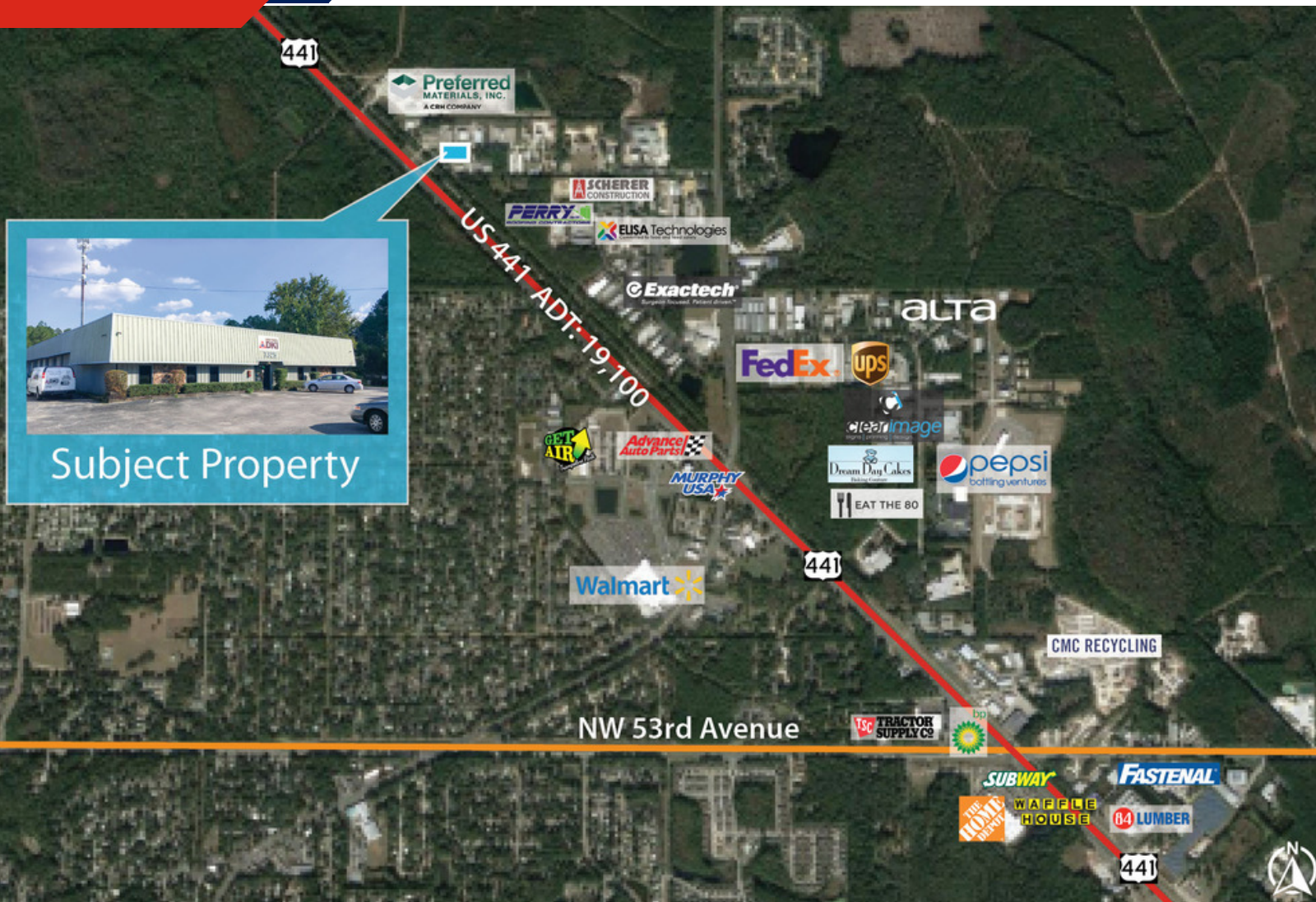
- Multiple industrial spaces for lease at 7325 NW 13th Boulevard, just off Highway 441 in Gainesville
- A total of 5,900-square-feet available for lease over two spaces, divided into a 3,900 sf unit and 2,000 sf unit.
- This building is located proximate to many other businesses and warehouses such as UPS, FedEx, Pepsi, Scherer Construction, Perry Roofing, and Exactech.

**Rick Cain, CCIM, SIOR**

352.505.7588

rick.cain@avisonyoung.com

### Aerial Map



#### Location

located off of  
US Highway 441



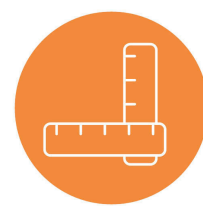
#### Features

Warehouse space in  
industrial park



#### Proximity

Proximate to FedEx, UPS,  
Pepsi, and more



#### Space Sizes

2,000 sf  
currently available

Aerial Map



Floor Plan

**TOTAL SPACE AVAILABLE**

5,900 sf

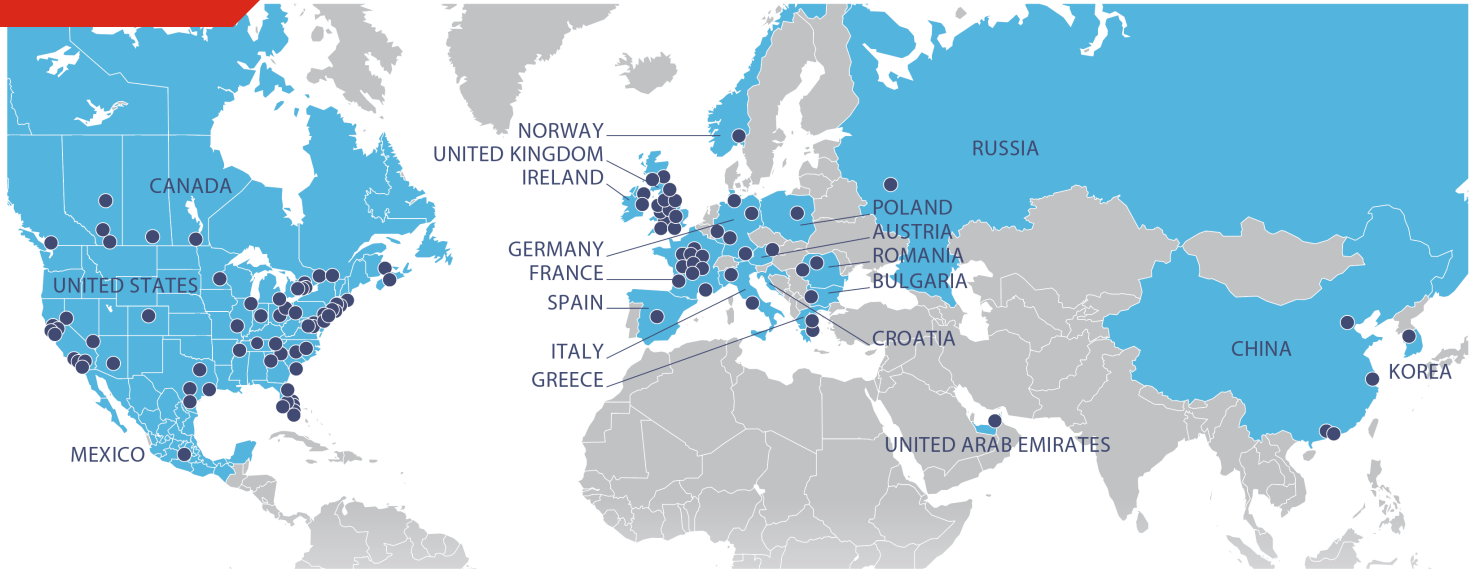
**BAY 87/90**



Drawn to depict layout. Not drawn to scale.



### About Us



### Avison Young at a Glance

Founded: **1978**  
Total Real Estate Professionals: **5,000**  
Offices: **120**  
Countries: **20**  
Brokerage Professionals: **1,600**  
Property Under Management: **290 million sf**

Avison Young is the world's fastest-growing commercial real estate services firm. Headquartered in Toronto, Canada, Avison Young is a collaborative, global firm owned and operated by its Principals. Founded in 1978, with legacies dating back more than 200 years, the company comprises approximately 5,000 real estate professionals in 120 offices in 20 countries. The firm's experts provide value-added, client-centric investment sales, leasing, advisory, management and financing services to clients across the office, retail, industrial, multi-family and hospitality sectors.



[View Our Listings](#)



[Contact Us](#)



[Visit Our Website](#)



[Subscribe Today](#)