

The Harvey Centre in Harlow, Essex, is changing

more than shopping



The Terrace, a new £9 million leisure scheme, due for completion in 2016. **Three new restaurant units remaining to let.**



NOW OPEN:

The Real China - 4,000 sq ft

Creams - 4,000 sq ft

EXCHANGED CONTRACTS WITH:

Tinseltown American Diner - 4,800 sq ft

Cineworld Cinemas - 25,000 sq ft

Gyms Kitchen - 2,500 sq ft

Xercise4less - 32,000 sq ft

NEW CINEWORLD OPENING DECEMBER 2016

Location

Harlow is located in Essex, 26 miles north east of Central London with excellent train links from Liverpool Street with direct trains taking 30 minutes.

The Harvey Centre is located off the main Harlow link road and Broadwalk and provides easy access into the Leisure Scheme. The scheme is the main shopping centre in Town and will provide the only cinema within the town centre.

There is direct access to the cinema and restaurant terrace from the 725 space multi-storey car park.

Catchment / Demographics

Harlow is the dominant retail centre within its core catchment, attracting market share of 60.6%.

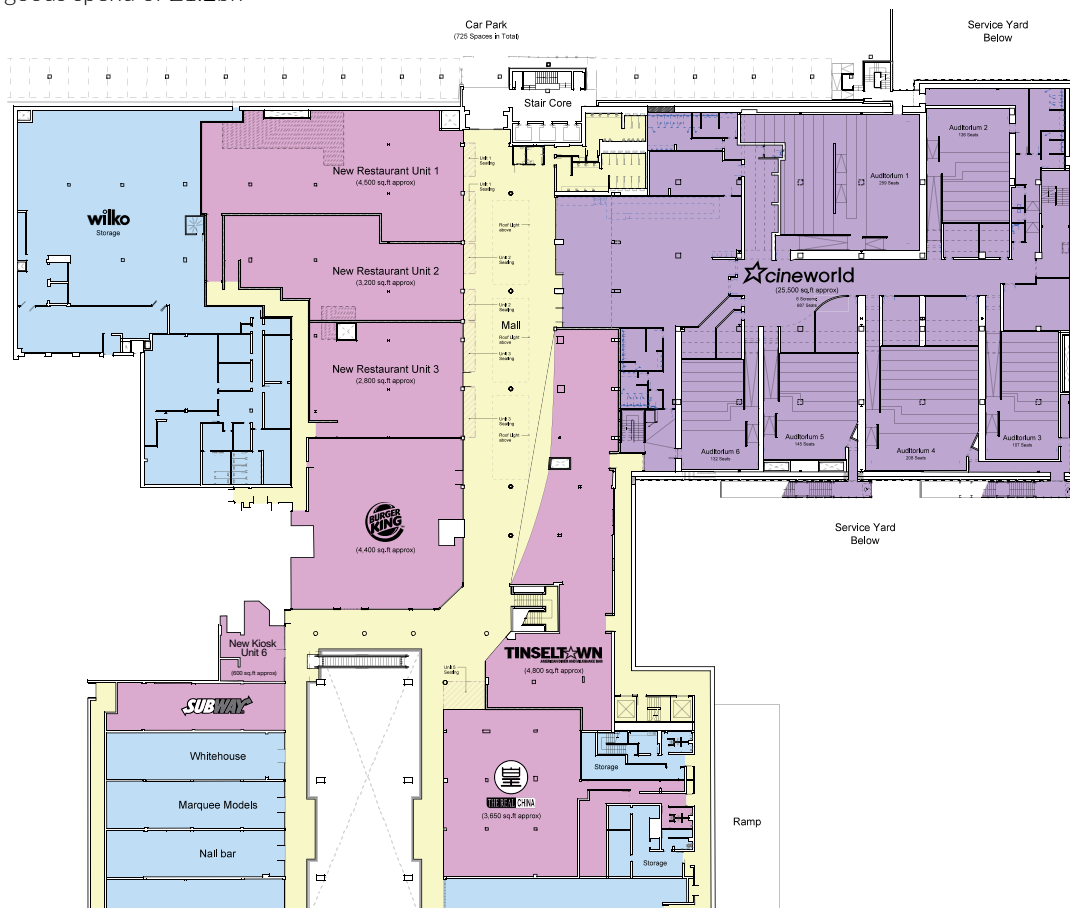
Harlow's total catchment incorporates a population of 560,459 with a comparison goods spend of £1.2bn annually.

Annual household spend on catering (£1,209) is above that of comparable towns which include Northampton (£1,190) and Warrington (£1,170) and on a comparable spend with Staines and Newbury.

Retailers currently within the shopping centre include HMV, Primark, Tesco, Wilko, Deichmann Shoes, Blue Inc, and H Samuel.

Schedule of Areas:

Schedule of areas			Status
Unit 1	4,415 sq ft	410 sq m	Available
Unit 2	3,250 sq ft	302 sq m	Available
Unit 3	2,800 sq ft	260 sq m	Available
Unit 4	Tinseltown		Exchanged
Unit 5	Real China		Open
Unit 6	600 sq ft	56 sq m	Available
Unit 7	Subway		Open



For more information contact:



Graham Campbell
Tel: 020 7280 4700



Anthony Appleby
Tel: 01923 205508



Chris Hovington
Tel: 020 7647 4805



MISREPRESENTATION ACT 1967 and PROPERTY MISDESCRIPTIONS ACT 1991
GCW and Fleurets, their clients and any joint agents, give notice that: (i) These particulars do not form part of any offer or contract and must not be relied upon as statements or representations of fact. (ii) No person in the employment of the agent(s) has any authority to make or give any representation or warranty whatever in relation to this property. (iii) Floor areas, measurements or distances given are approximate. Unless otherwise stated, any rents, or outgoings quoted are exclusive of VAT. (iv) Any descriptions given of the property cannot be taken to imply, it is in good repair, has all necessary consents, is free of contamination, or that the services and facilities are in working order. Interested parties are advised to carry out their own investigations as required. August 2015.