

## land & development in DL13

Orchard View, Wolsingham, Bishop Auckland  
County Durham, DL13 3EN

# £100,000

- ✓ Development site for sale
- ✓ Excellent established residential location
- ✓ To be sold as freehold title
- ✓ Planning permission granted March 2019
- ✓ For three bedroom detached bungalow
- ✓ Car parking spaces for 2no. vehicles



# Summary

- Property Type: Land & Development - Parking: On Street Price: £100,000

## Description

We are pleased to offer to the market this development plot with planning, well located in an established residential area off Meadhope Street and Orchard View, Wolsingham, Bishop Auckland. The plot measures approximately 0 acres, and has been granted full planning permission in March 2019 for the erection of a detached dwelling (planning reference DM/19/00411/FPA). Plans detail the development of 1no. detached three bedroom bungalow with 2no. parking spaces to the east; the dwelling would be accessed via the existing access from Orchard View. Full plans and applications can be provided upon request.

## Location

The site is located south of and to the rear of Meadhope Street, which is one of the oldest streets in Wolsingham, and within the core of the historic town. Orchard View is an infill development of 3No. modern brick single storey dwellings built circa 1970, with access to the development terminating at Meadhope Street. The subject site lies south of 3 Orchard View, and is currently land and gardens forming the amenity space of 3 Orchard View.

## Site Details

The subject site is a grassed area irregular in shape, measuring approximately 1,107sqm (0.274 acres), with a perimeter of approximately 270m.

## Planning Permission

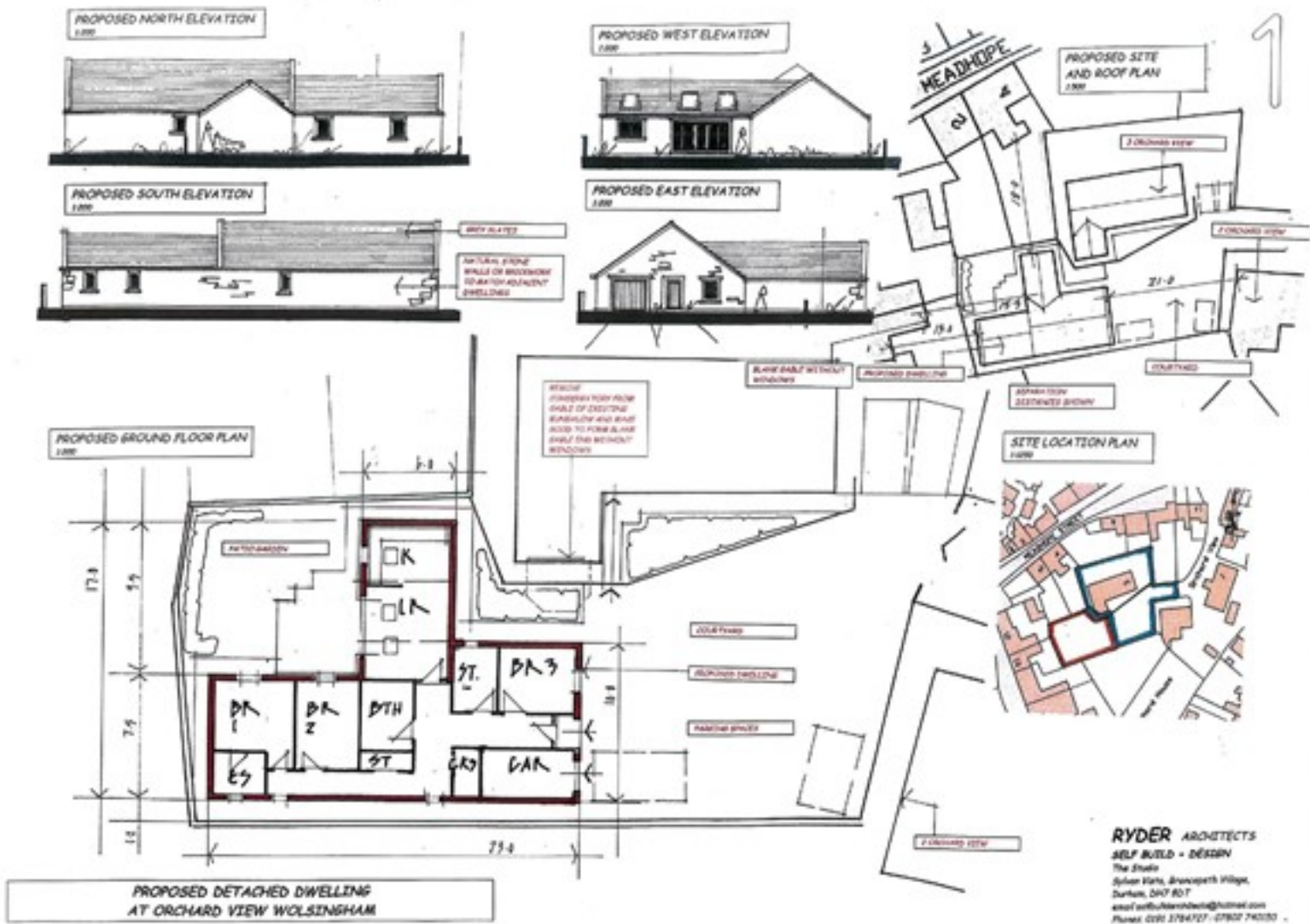
The subject site has been granted full planning permission on 27th March 2019 for the erection of a detached dwelling. Planning reference DM/19/00411/FPA.

## Tenure

Freehold. Title number DU360577 is to be split, red outline (excluding blue outline) on plans as a guideline.

## Additional Information

For further information please contact our office direct on 0191 737 1154, or alternatively via e-mail on [commercial@pattinson.co.uk](mailto:commercial@pattinson.co.uk). With regards to viewing the subject property, this is to be done strictly by appointment through Keith Pattinson Commercial department. Please contact us to arrange an internal inspection, or to register your interest.



**RYDER ARCHITECTS**  
 SELF BUILD - DESIGN  
 The Studio  
 Station Road, Aronson Park Village,  
 Durham, DH7 8DT  
 email: info@ryderarchitects.co.uk  
 Phone: 0191 2784727 - 07807 740330

## Orchard View, Wolsingham, Bishop Auckland, County Durham, DL13 3EN

Contact your local branch today for more information on this property:

**55 Medomsley Road, Consett, County Durham, Tyne & Wear, DH8 5HQ, Tel: 01207 508262, Fax: 01207 583771,  
 www.pattinson.co.uk**

These particulars, whilst believed to be accurate are set out as a general outline only for guidance and do not constitute any part of an offer or contract. Intending purchasers should not rely on them as statements of representation of fact, but must satisfy themselves by inspection or otherwise as to their accuracy. No person in this firm's employment has the authority to make or give any representation or warranty in respect of the property.