

## Free-Standing Former Bank Branch

- .47 acre former bank branch with drive thru available immediately for lease/sale
- Great visibility and access at the signalized corner of W Main St (Hwy 93) and Moorefield Memorial Hwy (Hwy 178)
- The site is located at the main intersection of Liberty, SC

2017 DEMOGRAPHICS	1 MILE	3 MILE	5 MILE
Population	2,678	9,418	25,167
Avg HH Income	\$48,608	\$52,343	\$57,162

Robey Spratt

704.697.1901  
rspratt@atlanticretail.com



9,000 ADT

First Citizens Bank

CVS  
pharmacy

W Main St

Anderson Dr

**SITE**



**\$43,194**  
MED HH INCOME  
IN 5 MILE RADIUS



**32,000**  
ADT ON NEARBY  
HIGHWAY 17



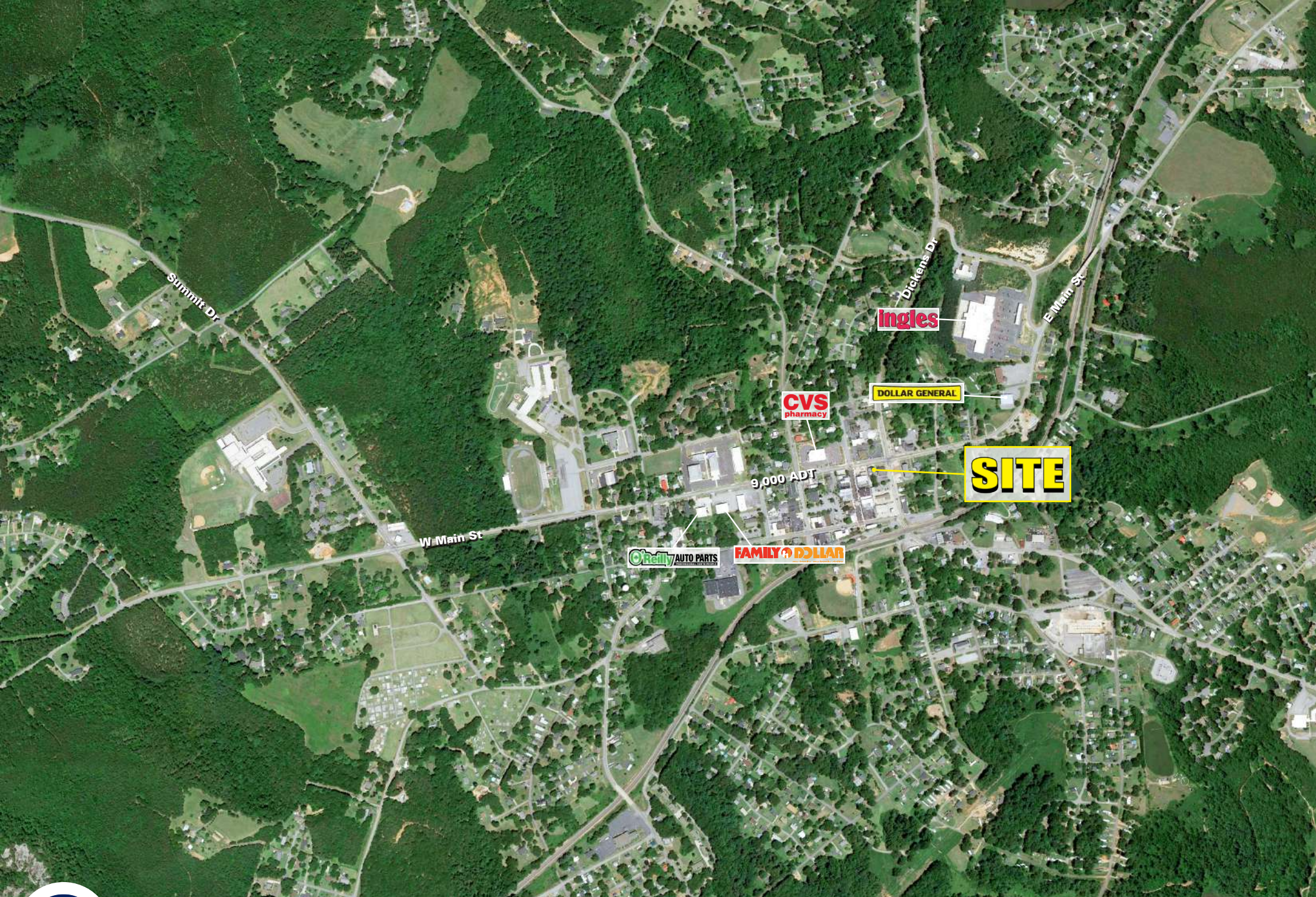
LIBERTY, SC  
**5 West Main Street**

MARKET AERIAL

**Robey Spratt**

704.697.1901  
rspratt@atlanticretail.com

ATLANTICRETAIL.COM



LIBERTY, SC

5 West Main Street

MARKET AERIAL

Robey Spratt

704.697.1901  
rspratt@atlanticretail.com

ATLANTICRETAIL.COM