

905 INDUSTRY WAY

TABLEROCK BUSINESS CENTER | MERIDIAN, ID 83642

OFFICE/FLEX SPACE FOR LEASE

TOK
COMMERCIAL



CONTACT

PETER OLIVER, SIOR, CCIM

208.947.0816

peter@tokcommercial.com

NICK SCHUITEMAKER, CCIM

208.947.0802

nick@tokcommercial.com

MIKE GREENE, SIOR, CCIM

208.947.0835

mikeg@tokcommercial.com

HIGHLIGHTS

- Move-in ready suite.
- Excellent visibility and signage.
- 12' x 12' grade level roll-up door.
- Easy access to Meridian Road and I-84.
- Quality block construction with 16'-17' clear height.
- Centrally located with quick access to a variety of amenities.

DETAILS

SUBMARKET:	N Meridian
BLDG TYPE:	Office/Flex
ZONING:	C-G
LOT SIZE:	0.14 Acre
YEAR BUILT:	2006
BLDG SIZE:	7,420 SF
PARKING:	Ample

UPDATED: 10.23.2023

THIS PROPERTY IS EXCLUSIVELY MARKETING BY TOK BOISE LLC DBA TOK COMMERCIAL. This information was obtained from sources believed reliable but cannot be guaranteed. Any opinions or estimates are used for example only.

TOKCOMMERCIAL.COM

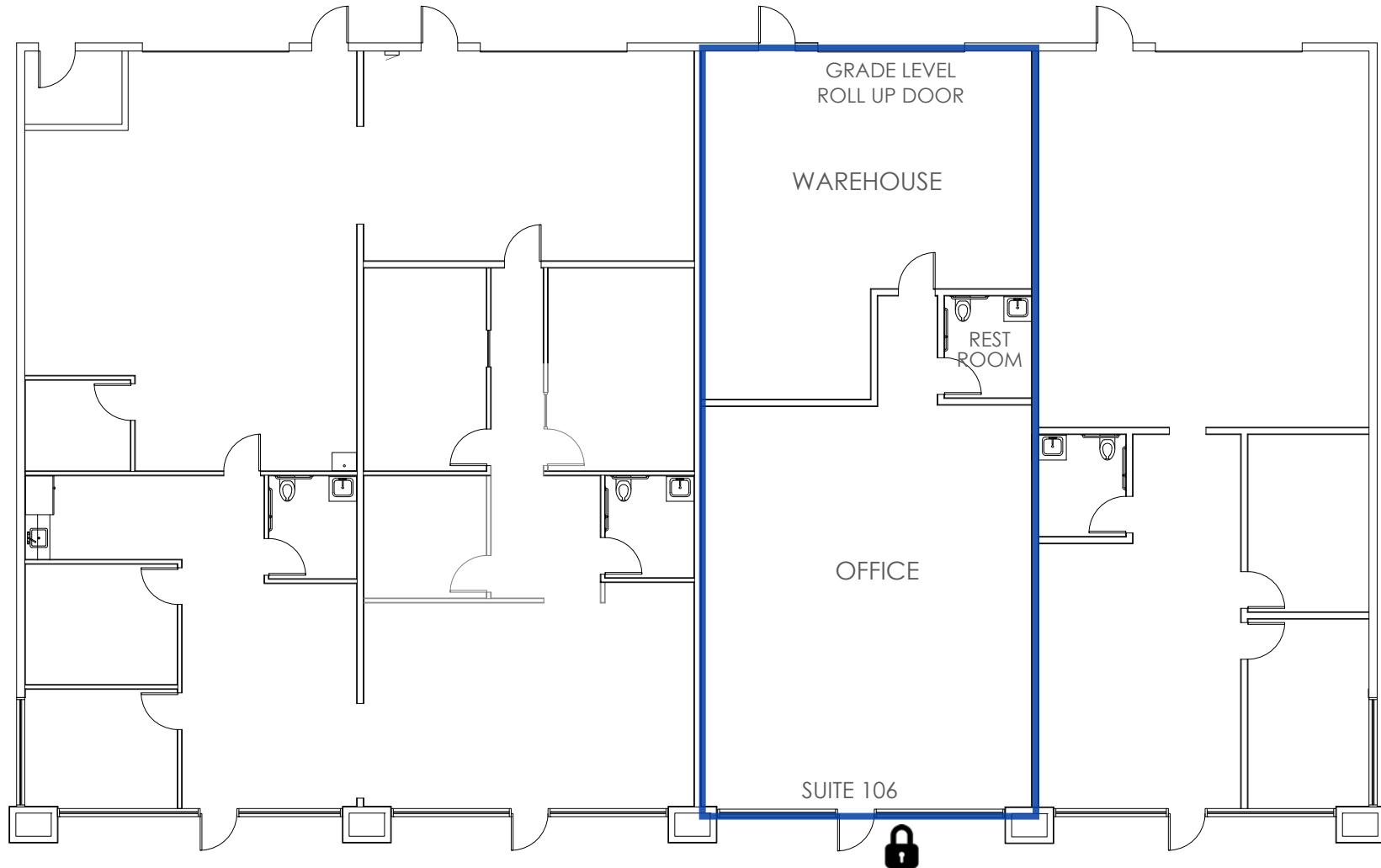


AVAILABLE SPACE

AVAILABILITY: Immediately
LEASE TERM: 3-5 Years
LEASE TYPE: NNN
ESTIMATED NNNs: \$0.37/SF/Mo.

CLEAR HEIGHT: 16'-17'
POWER: 3-phase
GRADE DOORS: 1- 12'x12'

<u>SUITE</u>	<u>SIZE</u>	<u>RATE</u>
Suite 106	1,863 SF	\$1.25/SF/Mo.



905 S INDUSTRY WAY

SITE PLAN



905 S INDUSTRY WAY



905 S INDUSTRY WAY

UPDATED: 10.23.2023 THIS PROPERTY IS EXCLUSIVELY MARKETING BY TOK BOISE LLC DBA TOK COMMERCIAL This information was obtained from sources believed reliable but cannot be guaranteed. Any opinions or estimates are used for example only.



FRANKLIN ROAD

MERIDIAN SPEEDWAY

WATERTOWER ST

STRATFORD DR

IDAHO STATE POLICE

CENTRAL DR

IDAHO FINE ARTS ACADEMY

CENTRAL PARK PLAZA

SITE

MERIDIAN ROAD

INTERSTATE 84

INTERSTATE 84

905 S INDUSTRY WAY