

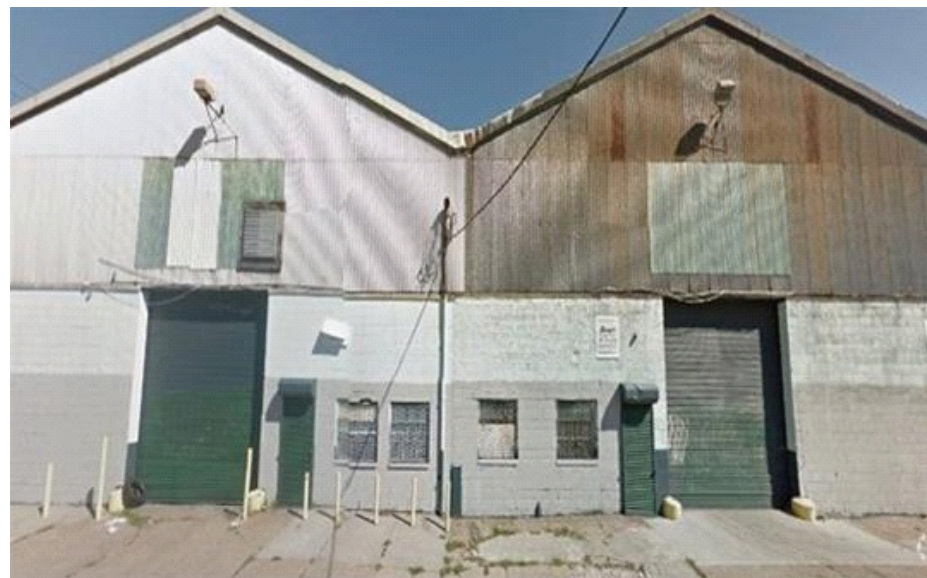
547 West Clearfield Street

Philadelphia, PA



For Sale 30,000 SF Industrial Facility

As exclusive agents, we are pleased to offer the following property for sale:



- ◆ 4 Drive-In grade level doors
- ◆ 30' clear ceiling heights
- ◆ 2000 amps; 3 phase power
- ◆ (2) 20 Ton overhead cranes
- ◆ No columns
- ◆ I2 Zoning
- ◆ 1/2 acre of outside storage space
- ◆ 15 minutes from US Route 76

Chris Kutzler Director **215.320.4523** ckutzler@ngkf.com

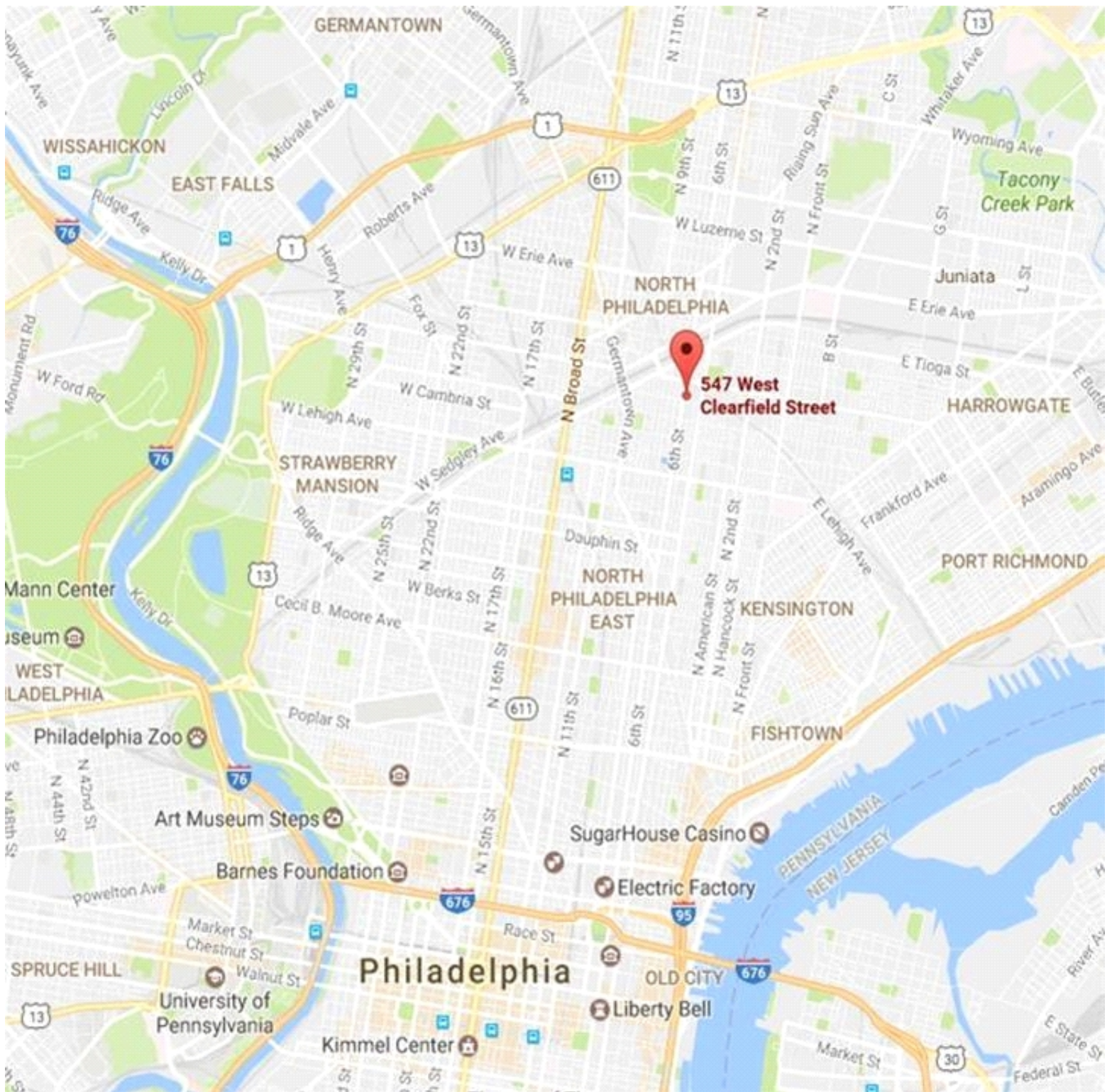
J. Eustace Wolfington, III Senior Managing Director **215.246.2702** ewolfington@ngkf.com

**Newmark Grubb
Knight Frank**

1735 Market Street, Suite 4000, Philadelphia, PA 19103
Office: 215.561.8300

The information contained herein has been obtained from sources deemed reliable but has not been verified and no guarantee, warranty or representation, either express or implied, is made with respect to such information. Terms of sale or lease and availability are subject to change or withdrawal without notice.

547 West Clearfield Street Philadelphia, PA



Chris Kutzler Director 215.320.4523 ckutzler@ngkf.com

J. Eustace Wolfington, III Senior Managing Director 215.246.2702 ewolfington@ngkf.com

**Newmark Grubb
Knight Frank**